



GE INDUSTRIAL MOTORS
a **WOLONG** company

Product Technical Information

January 27, 2022

Data shown is for the current revision model #. Ensure your nameplate model # matches.

| | |
|----------------------------|-----------------------|
| Model Number: | 5KS326SAA114D9 |
| Catalog Number: | M9839 |
| Instruction Manual: | GEI-56128 |
| Connection Diagram: | GEM2034E-FIG7 |
| Outline Drawing: | 239C6000AF |

Accessory Connection Diagrams

| | | | |
|------------------------------|------|------------------------------|------|
| Bearing Thermocouple: | None | Heater: | None |
| RTD: | None | Thermistor: | None |
| Thermostat: | None | Winding Thermocouple: | None |
| Bearing RTD: | None | | |

Table of Contents

| | |
|-----------------------------|----|
| Specification | 01 |
| Performance Characteristics | 02 |
| Outline Drawing | 03 |
| Connection Drawing(s) | 04 |
| Spare parts | 05 |

Marks:

| | | | |
|----------------------------|-----------------------|-------------------------------|---------|
| MODEL NUMBER: | 5KS326SAA114D9 | Estimated Weight: | 670 Lbs |
| Outline Drawing: | 239C6000AF | Time Rating: | CONT |
| Connection Diagram: | GEM2034E-FIG7 | Enclosure: | TEFC |
| Instruction Book: | GEI-56128 | Encl Construction: | X\$D |
| Design Code: | 32BD0112B | Ambient Max(°C): | 40 |
| Type: | KS | Alt Ambient Max(°C): | 55 |
| Frame: | 326TS | Insulation Class: | H |
| Phases: | 3 | NEMA Design: | B |
| Poles: | 2 | Nominal Efficiency: | 93.0 % |
| Output Power: | 50HP 37KW | Guaranteed Efficiency: | 92.4 % |
| RPM: | 3565 | 3/4 Load Efficiency: | 93.9 % |
| Voltage: | 575 | KVA Code: | G |
| Hertz: | 60 | Max KVAR: | 15.6 |
| Amps - FL: | 46.8 | Power Factor: | 86.0 |
| Service Factor: | 1.15 | Bearing - DE: | 6312ZC3 |
| Alt Service Factor: | 1.00 | Bearing - ODE: | 6312ZC3 |

Enclosure is Totally Enclosed Fan-Cooled

Stamped Nameplate Notes:

STAMP NP249A5564P051 AS BELOW:

MODEL:5KS326SAA114D9 S/N: XXX

CSA CERTIFIED CSA09.2216219 FOR EX NA IIC 200 C GC

CL 1 ZONE2 AEX NA IIC 200C;CL 1 DIV2 GRP ABCD 200C

IN -40C <= AMB <= 40C, 1.0 SF ON SINE-WAVE PWR

SURF TEMP 260C AT 1.15SF ON SINE-WAVE PWR

OR 215C VT OR 230C CT OR 215C CHP PWM CONTROL

ALTERNATE RATING FOR PWM CONTROL 1.0SF 40C AMB

VT 0-60 HZ, CT 30-60 HZ, CHP 60-75 HZ



Additional Information:

2P - TS EXTN
346 CU IN - 3.00" NPT
OIL RESISTANT SLEEVING ON LEADS
F1 MOUNTING



Performance Characteristics

1st Winding 1st Connection

Design: 32BD0112B

Marks:

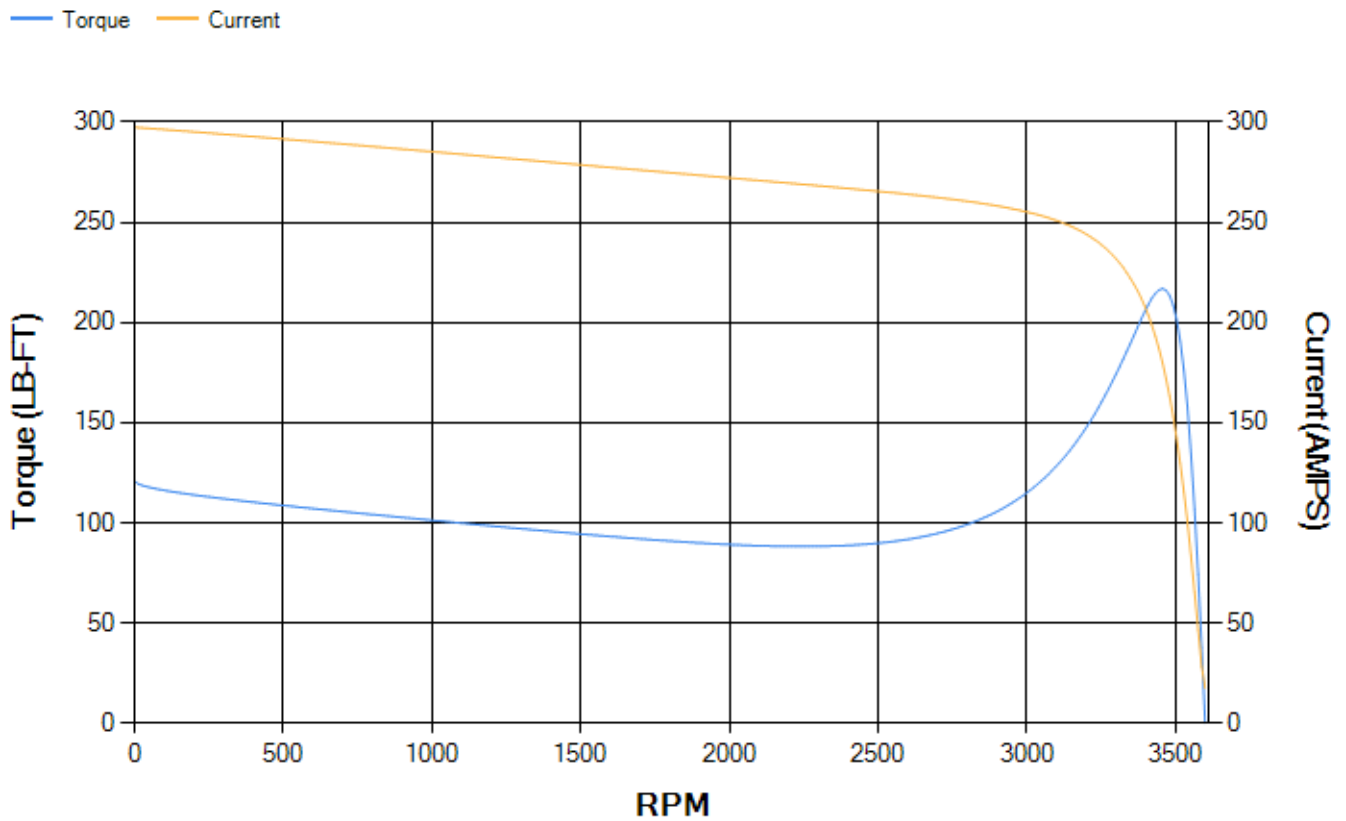
| LOAD % | 125.0 | 115.0 | 100.0 | 75.0 | 50.0 | 25.0 | 0.0 |
|--------|-------|-------|-------|-------|-------|-------|-------|
| % EFF | 93.33 | 93.55 | 94 | 93.89 | 93.14 | 89.45 | 0.00 |
| % PF | 87.37 | 86.88 | 85.66 | 81.6 | 72.3 | 50.22 | 5.4 |
| AMPS | 57.39 | 52.97 | 46.44 | 36.65 | 27.79 | 20.84 | 17.48 |

| | | | | | |
|--------------------|--------|--------------------|--------|--------------------|--------|
| TORQ(FL)#FT | 73.62 | TORQ(LR)%FL | 164.19 | TORQ(BD)%FL | 294.35 |
| AMPS(LR) | 297.46 | PF AT START | 0.3 | | |

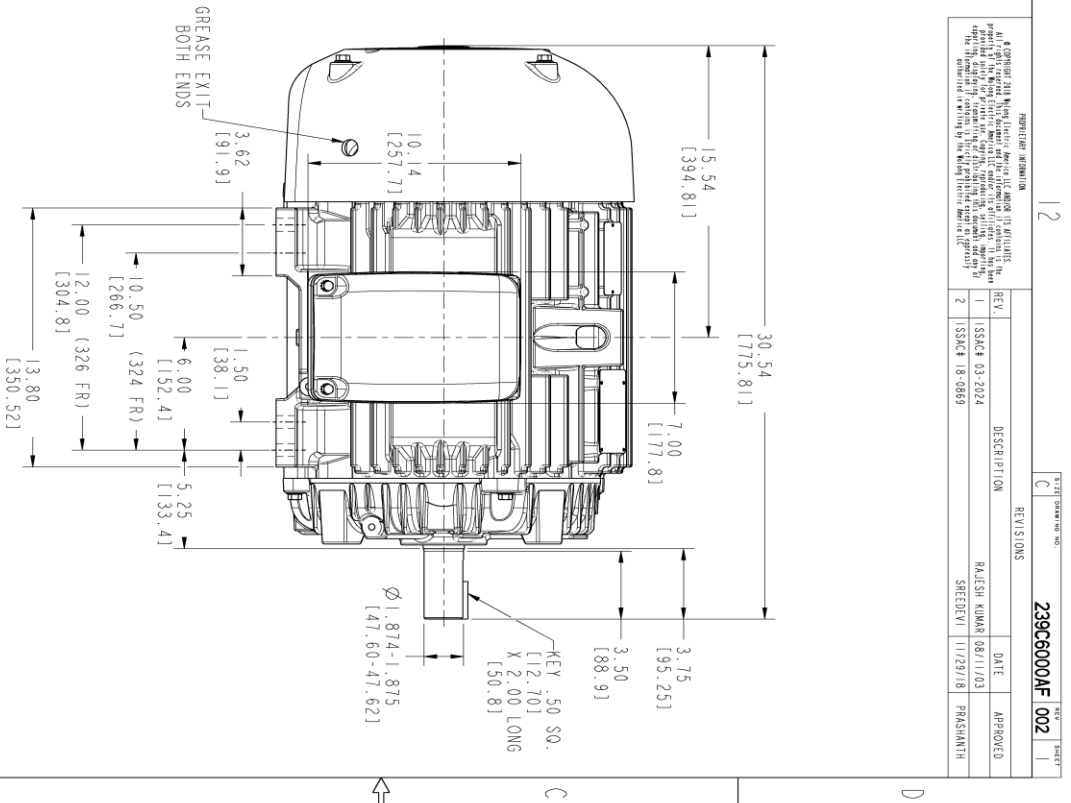
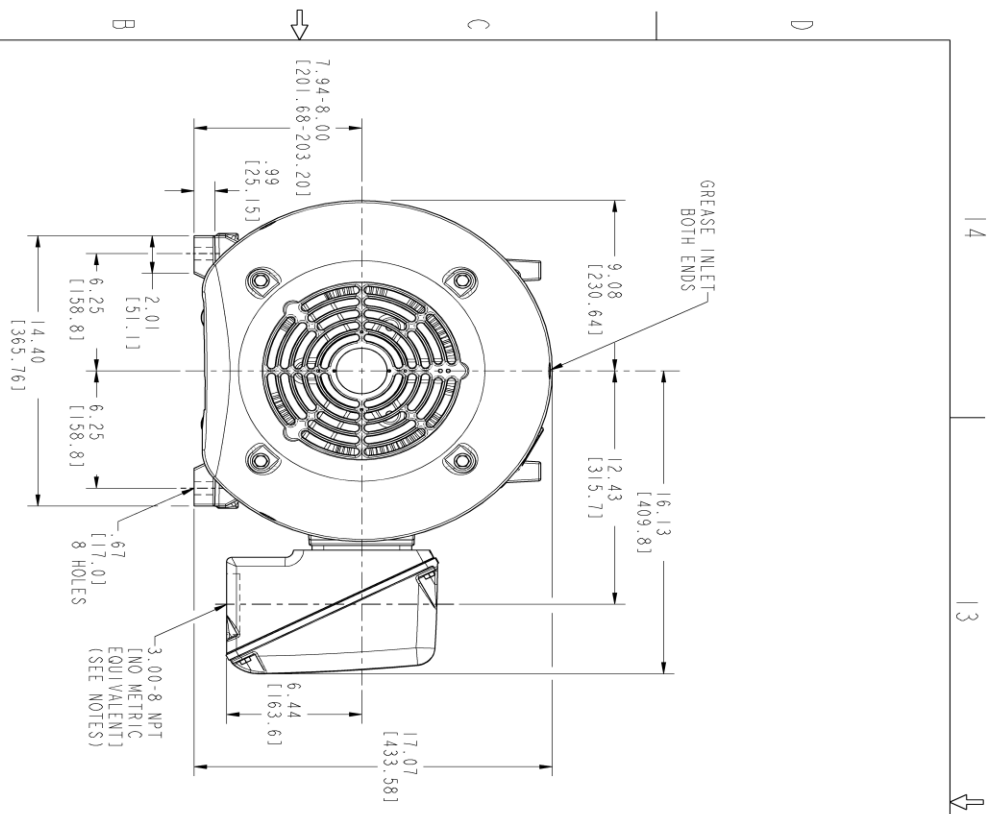
This motor is capable of two cold or one hot start with a maximum connected load inertia of 134 Lb-Ft Sq (5.64 Kg-meter Sq)at 100% voltage, where the load torque varies with the square of the speed. Acceleration time with maximum inertia and the above load type is 19 seconds. Safe stall time at 100% voltage is 44 seconds cold, 23 seconds hot. Rotor inertia is 4.02 Lb-Ft Sq (0.17 Kg-meter Sq).

| | | | |
|---------------------------|-------|---------------------------|-------|
| Open Circuit A-C: | 0.708 | Short Circuit D-C: | 0.019 |
| Short Circuit A-C: | 0.04 | X/R Ratio: | 7.069 |
| Stator Slots: | 48 | Rotor Slots: | 38 |

Speed Torque Current Curve (First Connection, First Speed)



Marks:



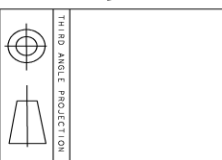
- NOTES :
- CONDUIT BOX MAY BE PLACED WITH THE ENTRANCE DOWN, UP OR ON EITHER SIDE.
 - F-1 ASM AS SHOWN.
 - F-2 ASM - HAS CONDUIT BOX ON OPPOSITE SIDE.
 - BRACKETED DIMENSIONS ARE METRIC (MILLIMETERS).

REGISTRATION INFORMATION

© COPYRIGHT 2018 GE Industrial Motors, Inc. All rights reserved. This drawing is the property of GE Industrial Motors, Inc. and is not to be reproduced, stored in a retrieval system, or transmitted in any form or by any means, electronic, mechanical, photocopying, recording, or by any information storage and retrieval system, without the prior written permission of GE Industrial Motors, Inc. The information contained herein is the confidential and proprietary information of GE Industrial Motors, Inc.

| REV. | DESCRIPTION | DATE | APPROVED |
|------|---------------|----------|--------------|
| 1 | ISSUE 03-2024 | 08/11/20 | RAJESH KUMAR |
| 2 | ISSUE 18-0869 | 11/29/18 | SREDEVII |

239C6000AF 002



| SIGNATURES | DATE |
|---------------------|----------|
| MODEL: MGRJAU | 03/31/02 |
| CHECKED: MANIVANNAN | 03/31/02 |
| DESIGN: MGRJAU | 03/31/02 |
| ISSUED: MGRJAU | 03/31/02 |

GE INDUSTRIAL MOTORS
a WOLSKONG company

OUTLINE
324/326 TS TEFC
346 CU. IN. CONDUIT BOX

239C6000AF

SCALE: 0.250

SHEET 1 OF 1

Marks:

Connection Diagram
GEM2034E-FIG7



| End shield Assembly | | |
|---------------------|---------------|----------------|
| Part Description | DE Side Part# | ODE Side Part# |
| End Shield | 115E4200AA1 | 115E4200LA1 |
| Bearing | 235A2509AS01 | 235A2509AS01 |
| Slinger/Inproseal | 149C4399G04 | 149C4399G04 |

| Fan & Fan Cover Assembly | |
|--------------------------|-------------|
| Part Description | Part# |
| Fan | 159C6700G02 |
| Fan Cover | 128D6800AA1 |

| Conduit & Accessories Box Assembly | |
|------------------------------------|-------------|
| Part Description | Part# |
| Conduit Box | 149C4429AA2 |

| Mechanical Accessories | |
|------------------------|-------|
| Part Description | Part# |
| Brake | |
| Tachometer | |

