



GE INDUSTRIAL MOTORS
a **WOLONG** company

Product Technical Information

May 12, 2021

Data shown is for the current revision model #. Ensure your nameplate model # matches.

Model Number:	5KS449SAA304C
Catalog Number:	M9845
Instruction Manual:	GEI-56128
Connection Diagram:	GEM2034E-FIG7
Outline Drawing:	239C6800ARA

Accessory Connection Diagrams

Bearing Thermocouple:	None	Heater:	None
RTD:	None	Thermistor:	None
Thermostat:	None	Winding Thermocouple:	None
Bearing RTD:	None		

Table of Contents

Specification	01
Performance Characteristics	02
Outline Drawing	03
Connection Drawing(s)	04
Spare parts	05

Marks:

MODEL NUMBER: 5KS449SAA304C
Outline Drawing: 239C6800ARA
Connection Diagram: GEM2034E-FIG7
Instruction Book: GEI-56128
Design Code: 49BD3187B
Type: KS
Frame: 449T
Phases: 3
Poles: 6
Output Power: 200HP 148KW
RPM: 1190
Voltage: 575
Hertz: 60
Amps - FL: 183.0
Service Factor: 1.15
Alt Service Factor: --

Estimated Weight: 2990 Lbs
Time Rating: CONT
Enclosure: TEFC
Encl Construction: 841
Ambient Max(°C): 40
Alt Ambient Max(°C): --
Insulation Class: H
NEMA Design: B
Nominal Efficiency: 95.8 %
Guaranteed Efficiency: 95.4 %
3/4 Load Efficiency: --
KVA Code: G
Max KVAR: 53.1
Power Factor: 85.5
Bearing - DE: 6318ZC3
Bearing - ODE: 6318ZC3

Enclosure is Totally Enclosed Fan-Cooled

Stamped Nameplate Notes:

IEEE-STD-841-2009
 DE BRG 90BC03JP3, ODE BRG 90BC03JP3
 STAMP NP249A5564P051 AS BELOW:
 MODEL:5KS449SAA304C S/N: XXX
 CSA CERTIFIED CSA09.2216219 FOR EX NA IIC 200 C GC
 CL 1 ZONE2 AEX NA IIC 200C;CL 1 DIV2 GRP ABCD 200C
 IN -40C <= AMB <= 40C, 1.0 SF ON SINE-WAVE PWR
 SURF TEMP 280C AT 1.15SF ON SINE-WAVE PWR
 OR 200C VT OR 230C CT OR 200C CHP PWM CONTROL
 ALTERNATE RATING FOR PWM CONTROL 1.0SF 40C AMB
 VT 0-60 HZ, CT 20-60 HZ, CHP 60-90 HZ.



Additional Information:

6P - T EXTN
PAINTED FRAME ID & SHAFT,
FAN COVER INSIDE & ODE E/S OUTSIDE
C/BOX 700 CU IN - 3.00" NPT
OIL RESISTANT SLEEVING ON LEADS
.0015" TIR SHAFT RUNOUT
ROUTINE TEST REPORT AND 5 POINT VIBRATION TEST
REPORT INCLUDED IN C/B
GROUND PAD
F1 MOUNTING



Performance Characteristics

1st Winding 1st Connection

Design: 49BD3187B

Marks:

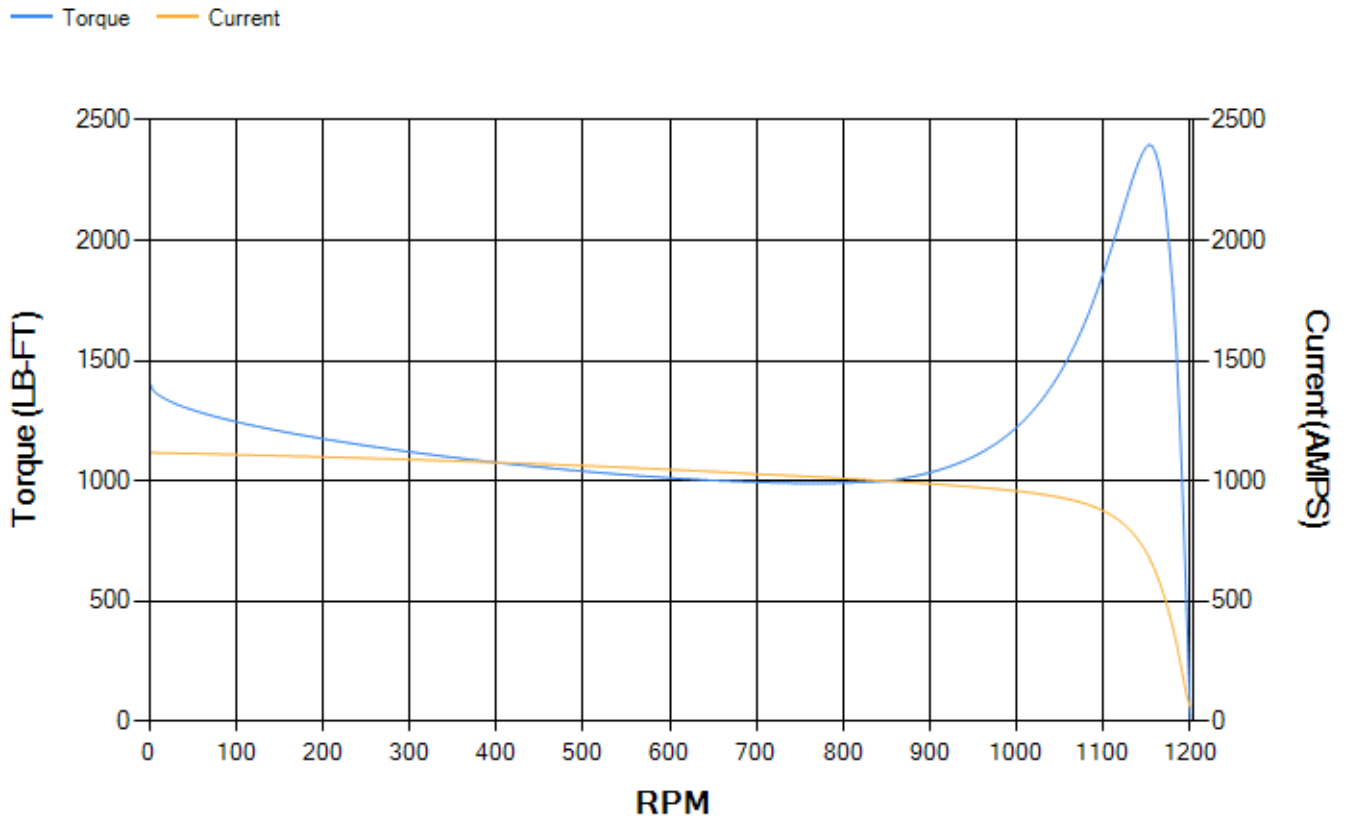
LOAD %	125.0	115.0	100.0	75.0	50.0	25.0	0.0
% EFF	95.2	95.44	95.95	96.07	95.92	94.14	0.00
% PF	86.27	86.13	85.48	82.57	74.8	53.66	3.3
AMPS	227.93	209.49	182.58	141.59	104.35	74.11	59.27

TORQ(FL)#FT	881.42	TORQ(LR)%FL	159.52	TORQ(BD)%FL	271.79
AMPS(LR)	1117.39	PF AT START	0.27		

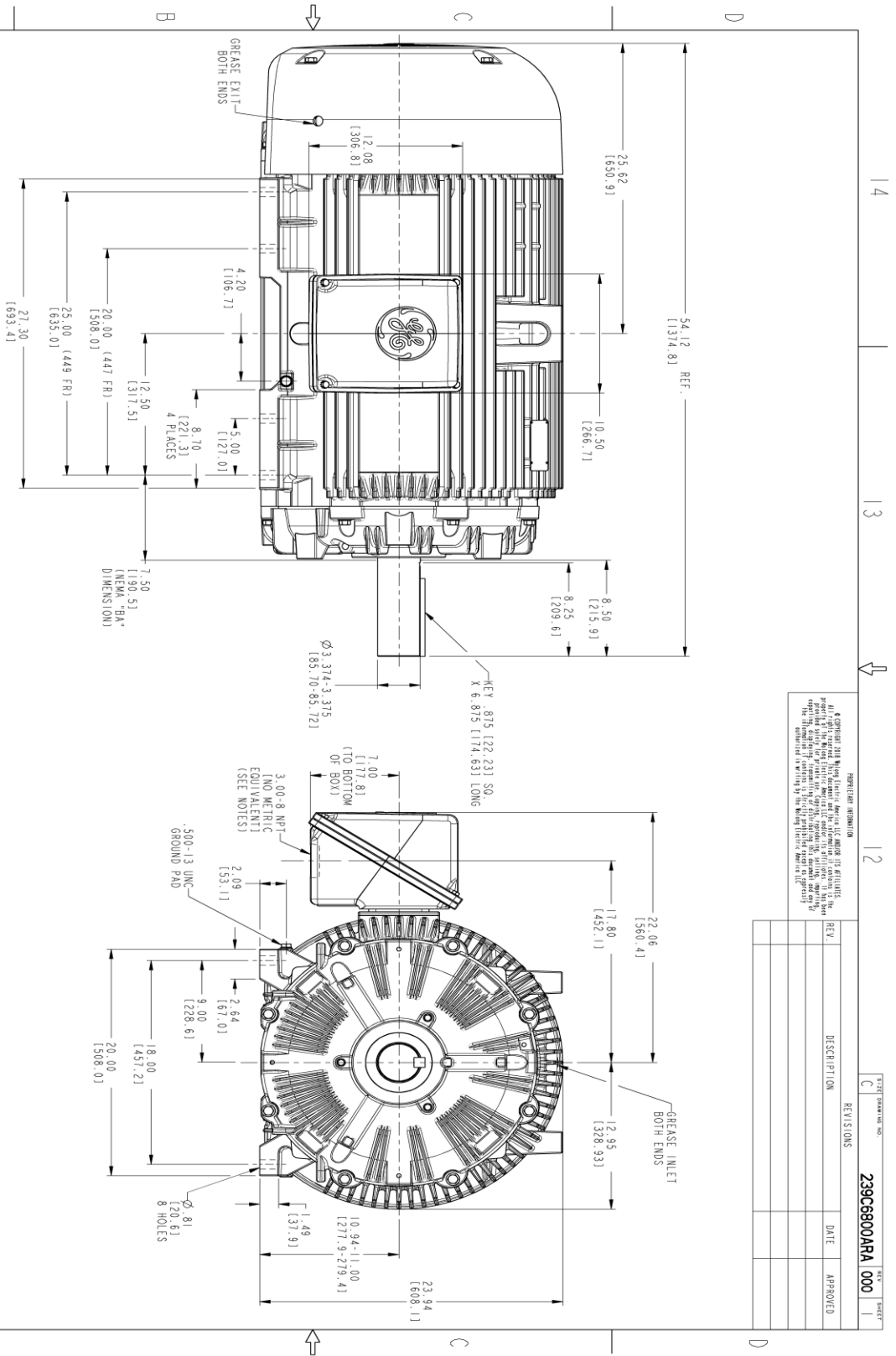
This motor is capable of two cold or one hot start with a maximum connected load inertia of 13832 Lb-Ft Sq (582.33 Kg-meter Sq)at 100% voltage, where the load torque varies with the square of the speed. Acceleration time with maximum inertia and the above load type is 60 seconds. Safe stall time at 100% voltage is 129 seconds cold, 72 seconds hot. Rotor inertia is 182.7 Lb-Ft Sq (7.69 Kg-meter Sq).

Open Circuit A-C:	1.109	Short Circuit D-C:	0.034
Short Circuit A-C:	0.054	X/R Ratio:	12.737
Stator Slots:	72	Rotor Slots:	58

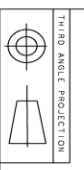
Speed Torque Current Curve (First Connection, First Speed)



Marks:



- NOTES:
1. CONDUIT BOX MAY BE PLACED WITH THE ENTRANCE DOWN, UP OR ON EITHER SIDE.
 2. F-I ASSEMBLY AS SHOWN.
 3. ALL DIMENSIONS ARE IN INCHES. BRACKETED DIMENSIONS ARE METRIC (MILLIMETERS).

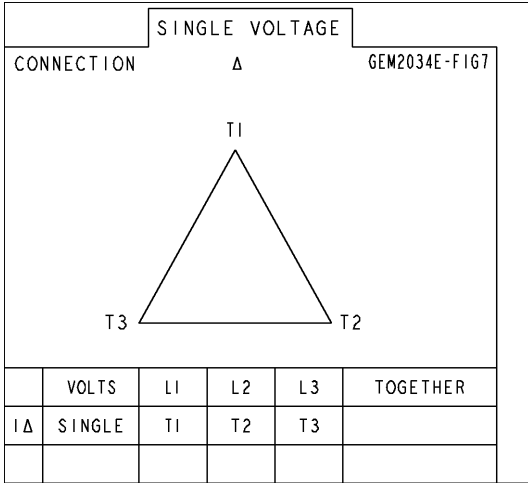


PROPERTY INFORMATION
 GE INDUSTRIAL MOTORS
 12000 W. BIRCH RD.
 GRAND RAPIDS, MI 49508-1000
 TEL: 616-770-4000
 FAX: 616-770-4001
 WWW.GEMOTORS.COM

SIGNATURES		DATE	
DESIGNER	WMSI	11/11/20	
CHECKED	WMSI	11/11/20	
DRAWN	WMSI	11/11/20	
ISSUED	WMSI	11/11/20	
SCALE:	0.180		
GE INDUSTRIAL MOTORS a WOLONG company		OUTLINE 447/449 T TERC 700 CU. IN. C. BOX, GROUND PAD	
239C6800ARA 000		SHEET 1 OF 1	

Marks:

Connection Diagram
GEM2034E-FIG7



End shield Assembly		
Part Description	DE Side Part#	ODE Side Part#
End Shield	115E4355AA1	115E4355LM1
Bearing	235A2514AG01	235A2514AG01
Slinger/Inproseal	149C4399G07	149C4399G07

Fan & Fan Cover Assembly	
Part Description	Part#
Fan	159C7100G03
Fan Cover	128D6841AA1

Conduit & Accessories Box Assembly	
Part Description	Part#
Conduit Box	118D4408AD2

Mechanical Accessories	
Part Description	Part#
Brake	
Tachometer	

