



GE INDUSTRIAL MOTORS
a **WOLONG** company

Product Technical Information

June 22, 2020

Data shown is for the current revision model #. Ensure your nameplate model # matches.

Model Number:	5KS449SAA209D8
Catalog Number:	M9906
Instruction Manual:	GEI-56128
Connection Diagram:	GEM2034E-FIG25
Outline Drawing:	239C6800FR

Accessory Connection Diagrams			
Bearing Thermocouple:	None	Heater:	None
RTD:	None	Thermistor:	None
Thermostat:	None	Winding Thermocouple:	None
Bearing RTD:	None		

Table of Contents

Specification	01
Performance Characteristics	02
Outline Drawing	03
Connection Drawing(s)	04
Spare parts	05

Marks:

MODEL NUMBER:	5KS449SAA209D8
Outline Drawing:	239C6800FR
Connection Diagram:	GEM2034E-FIG25
Instruction Book:	GEI-56128
Design Code:	49BD1242A
Type:	KS
Frame:	449T
Phases:	3
Poles:	4
Output Power:	300HP 222KW
RPM:	1790
Voltage:	460
Hertz:	60
Amps - FL:	332.0
Service Factor:	1.25
Alt Service Factor:	1.00

Estimated Weight:	3030 Lbs
Time Rating:	CONT
Enclosure:	TEFC
Encl Construction:	X\$D
Ambient Max(°C):	40
Alt Ambient Max(°C):	65
Insulation Class:	H
NEMA Design:	B
Nominal Efficiency:	96.2 %
Guaranteed Efficiency:	95.8 %
3/4 Load Efficiency:	96.3 %
KVA Code:	G
Max KVAR:	67.3
Power Factor:	88.0
Bearing - DE:	NU 318
Bearing - ODE:	6318ZC3

Enclosure is Totally Enclosed Fan-Cooled

Stamped Nameplate Notes:

ROLLER BEARING - FOR BELTED LOAD ONLY
 SF AMPS 413.3
 STAMP NP249A5564P051 AS BELOW:
 MODEL:5KS449SAA209D8 S/N: XXX
 CSA CERTIFIED CSA09.2216219 FOR EX NA IIC 200 C GC
 CL 1 ZONE2 AEX NA IIC 200C;CL 1 DIV2 GRP ABCD 200C
 IN -40C <= AMB <= 40C, 1.0 SF ON SINE-WAVE PWR
 SURF TEMP 260C AT 1.25SF ON SINE-WAVE PWR
 OR 200 C VT OR 230 C CT OR 200 C CHP PWM CONTROL
 ALTERNATE RATING FOR PWM CONTROL 1.0SF 40C AMB
 VT 0-60 HZ, CT 30-60 HZ, CHP 60-75 HZ.

Additional Information:

4P - T EXTN - SPLIT LEAD
 1260 CU IN - 2(4.00" NPT)
 C/B GRD PLATE
 OIL RESISTANT SLEEVING ON LEADS
 B5F4C4 HIGH FATIGUE STEEL AISI 4142 SHAFT MATERIAL
 F1 MOUNTING



Performance Characteristics

1st Winding 1st Connection

Design: 49BD1242A

Marks:

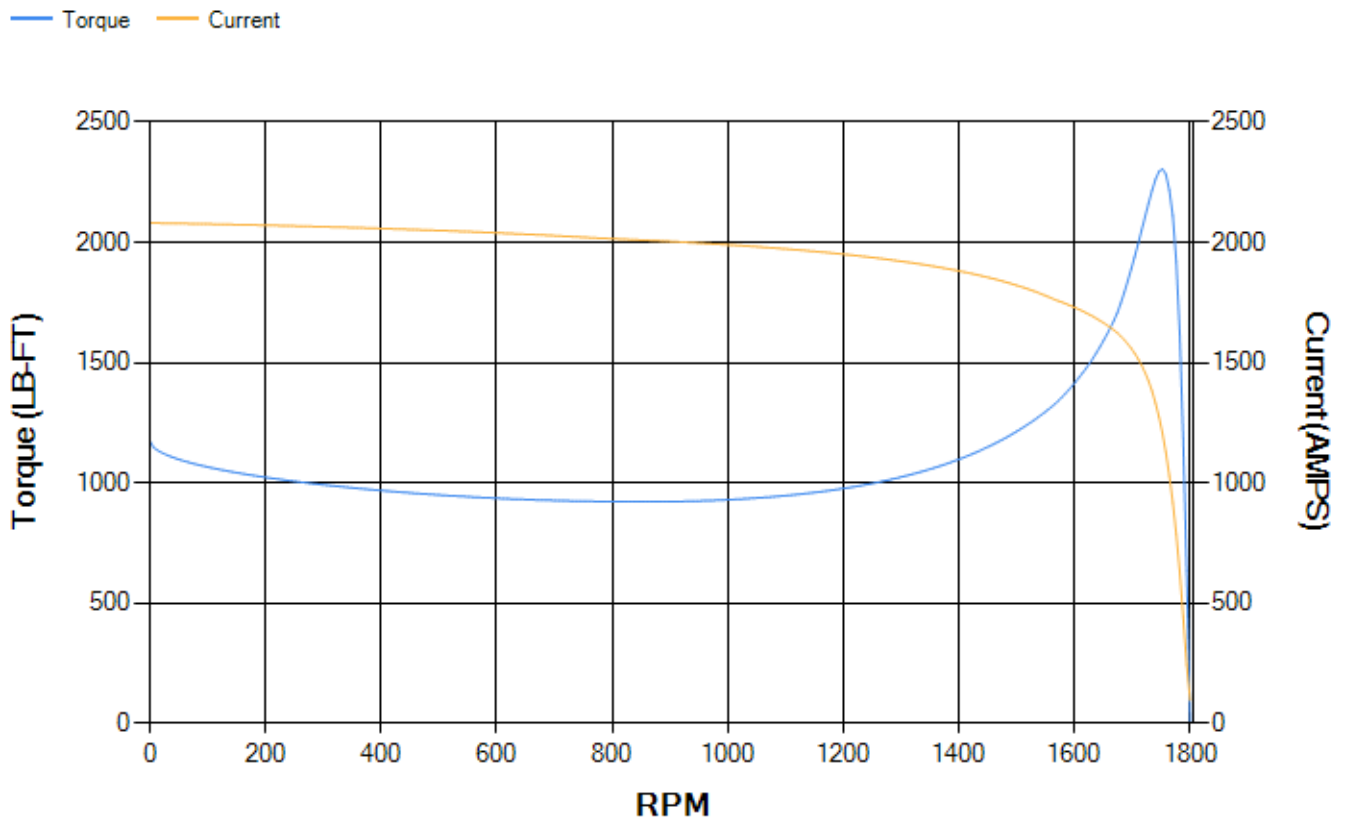
LOAD %	125.0	115.0	100.0	75.0	50.0	25.0	0.0
% EFF	95.79	95.96	96.35	96.28	95.92	93.8	0.00
% PF	88.63	88.6	88.18	86	79.62	60.1	4.29
AMPS	413.39	379.81	330.48	254.34	183.81	124.52	93.99

TORQ(FL)#FT	879.61	TORQ(LR)%FL	133.68	TORQ(BD)%FL	261.88
AMPS(LR)	2080.61	PF AT START	0.22		

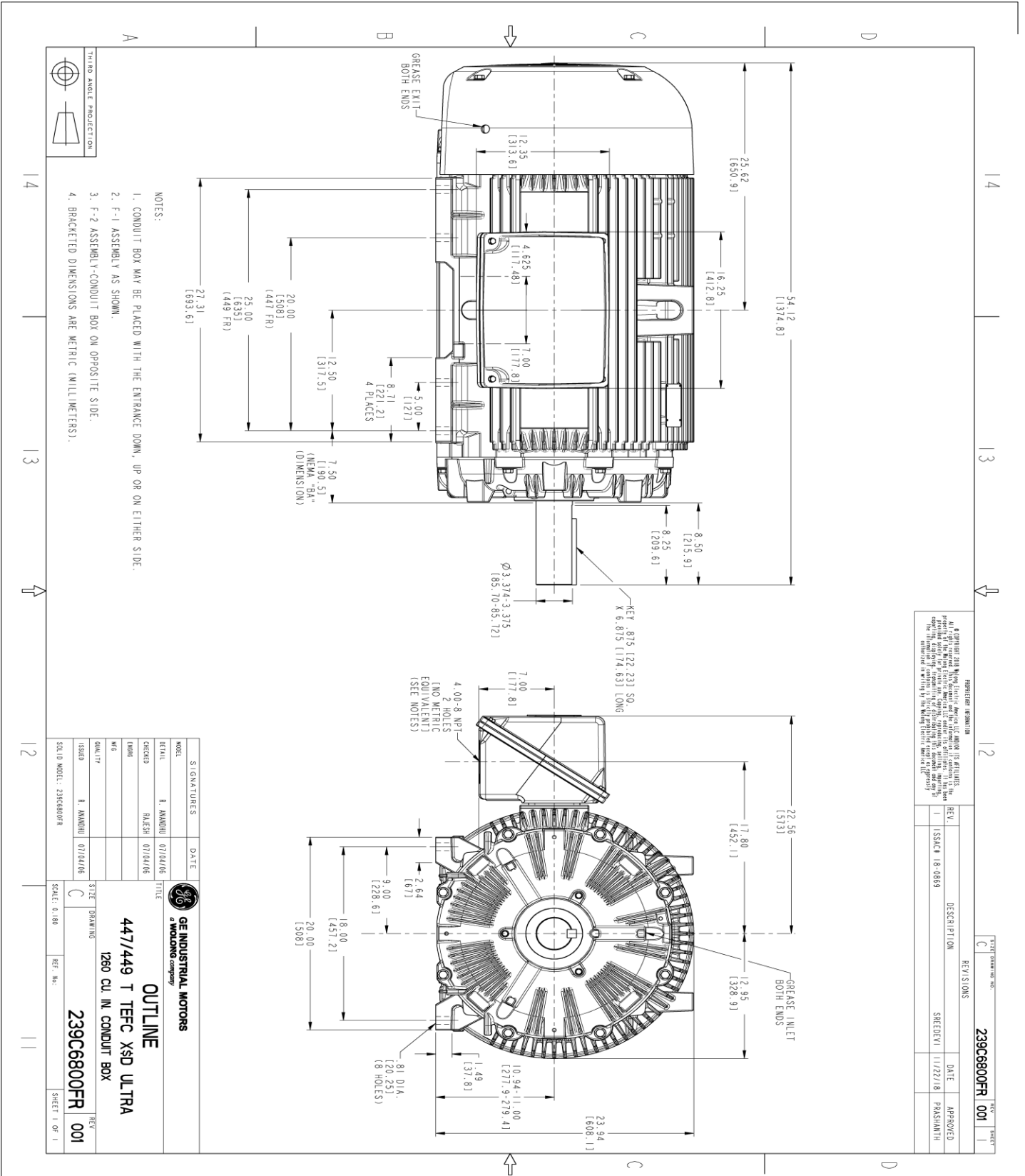
This motor is capable of two cold or one hot start with a maximum connected load inertia of 8801 Lb-Ft Sq (370.52 Kg-meter Sq)at 100% voltage, where the load torque varies with the square of the speed. Acceleration time with maximum inertia and the above load type is 66 seconds. Safe stall time at 100% voltage is 143 seconds cold, 79 seconds hot. Rotor inertia is 130.47 Lb-Ft Sq (5.49 Kg-meter Sq).

Open Circuit A-C:	1.77	Short Circuit D-C:	0.039
Short Circuit A-C:	0.072	X/R Ratio:	14.52
Stator Slots:	72	Rotor Slots:	58

Speed Torque Current Curve (First Connection, First Speed)



Marks:



REVISION INFORMATION

REV.	DESCRIPTION	DATE	APPROVED
1	ISSUE# 18-0869	11/22/18	PRASHANTH

SHEET DRAWING NO. **239C6800FR 001**

REV. NO. **C**

- NOTES:
1. CONDUIT BOX MAY BE PLACED WITH THE ENTRANCE DOWN, UP OR ON EITHER SIDE.
 2. F-1 ASSEMBLY AS SHOWN.
 3. F-2 ASSEMBLY- CONDUIT BOX ON OPPOSITE SIDE.
 4. BRACKETED DIMENSIONS ARE METRIC (MILLIMETERS).



SIGNATURES	DATE
MODEL: R. AMODI	07/04/16
CHECKED: RAJESH	07/04/16
DESIGN: R. AMODI	07/04/16
DRAWN: R. AMODI	07/04/16
SCALE: 0.180	REF. NO.

GE INDUSTRIAL MOTORS
a WOLONG company

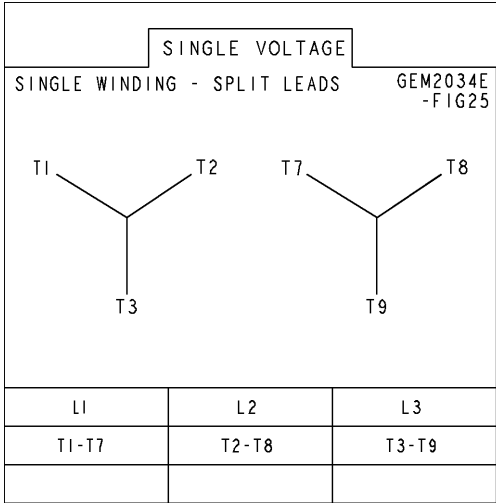
OUTLINE
447/449 T TEFC XSD ULTRA
1260 CU. IN. CONDUIT BOX

239C6800FR 001

SHEET 1 OF 1

Marks:

Connection Diagram
GEM2034E-FIG25



End shield Assembly		
Part Description	DE Side Part#	ODE Side Part#
End Shield	115E4355AA1	115E4355LL1
Bearing	235A2519AA01	235A2514AG01
Slinger/Inproseal	149C4399G07	149C4399G07

Fan & Fan Cover Assembly	
Part Description	Part#
Fan	159C7100G03
Fan Cover	128D6841AA1

Conduit & Accessories Box Assembly	
Part Description	Part#
Conduit Box	179B9058G03

Mechanical Accessories	
Part Description	Part#
Brake	
Tachometer	

