



GE INDUSTRIAL MOTORS
a **WOLONG** company

Product Technical Information

June 23, 2020

Data shown is for the current revision model #. Ensure your nameplate model # matches.

Model Number:	5KS449SAA254D1
Catalog Number:	M9907
Instruction Manual:	GEI-56128
Connection Diagram:	GEM2034E-FIG20
Outline Drawing:	239C6800FR

Accessory Connection Diagrams

Bearing Thermocouple:	None	Heater:	None
RTD:	None	Thermistor:	None
Thermostat:	None	Winding Thermocouple:	None
Bearing RTD:	None		

Table of Contents

Specification	01
Performance Characteristics	02
Outline Drawing	03
Connection Drawing(s)	04
Spare parts	05

Marks:

MODEL NUMBER:	5KS449SAA254D1	Estimated Weight:	3030 Lbs
Outline Drawing:	239C6800FR	Time Rating:	CONT
Connection Diagram:	GEM2034E-FIG20	Enclosure:	TEFC
Instruction Book:	GEI-56128	Encl Construction:	X\$D
Design Code:	49BD1242B	Ambient Max(°C):	40
Type:	KS	Alt Ambient Max(°C):	65
Frame:	449T	Insulation Class:	H
Phases:	3	NEMA Design:	B
Poles:	4	Nominal Efficiency:	96.2 %
Output Power:	300HP 222KW	Guaranteed Efficiency:	95.8 %
RPM:	1790	3/4 Load Efficiency:	96.2 %
Voltage:	575	KVA Code:	G
Hertz:	60	Max KVAR:	64.2
Amps - FL:	264.0	Power Factor:	88.5
Service Factor:	1.15	Bearing - DE:	6318ZC3
Alt Service Factor:	1.00	Bearing - ODE:	6318ZC3

Enclosure is Totally Enclosed Fan-Cooled

Stamped Nameplate Notes:

FOR DIRECT COUPLED LOAD ONLY
 STAMP NP249A5564P051 AS BELOW:
 MODEL:5KS449SAA254D1 S/N: XXX
 CSA CERTIFIED CSA09.2216219 FOR EX NA IIC 200 C GC
 CL 1 ZONE2 AEX NA IIC 200C;CL 1 DIV2 GRP ABCD 200C
 IN -40C <= AMB <= 40C, 1.0 SF ON SINE-WAVE PWR
 SURF TEMP 260C AT 1.25SF ON SINE-WAVE PWR
 OR 200 C VT OR 230 C CT OR 200 C CHP PWM CONTROL
 ALTERNATE RATING FOR PWM CONTROL 1.0SF 40C AMB
 VT 0-60 HZ, CT 30-60 HZ, CHP 60-75 HZ.

Additional Information:

4P - T EXTN - SPLIT LEAD
 1260 CU IN - 2(4.00" NPT)
 C/B GRD PLATE
 OIL RESISTANT SLEEVING ON LEADS
 F1 MOUNTING



Performance Characteristics

1st Winding 1st Connection

Design: 49BD1242B

Marks:

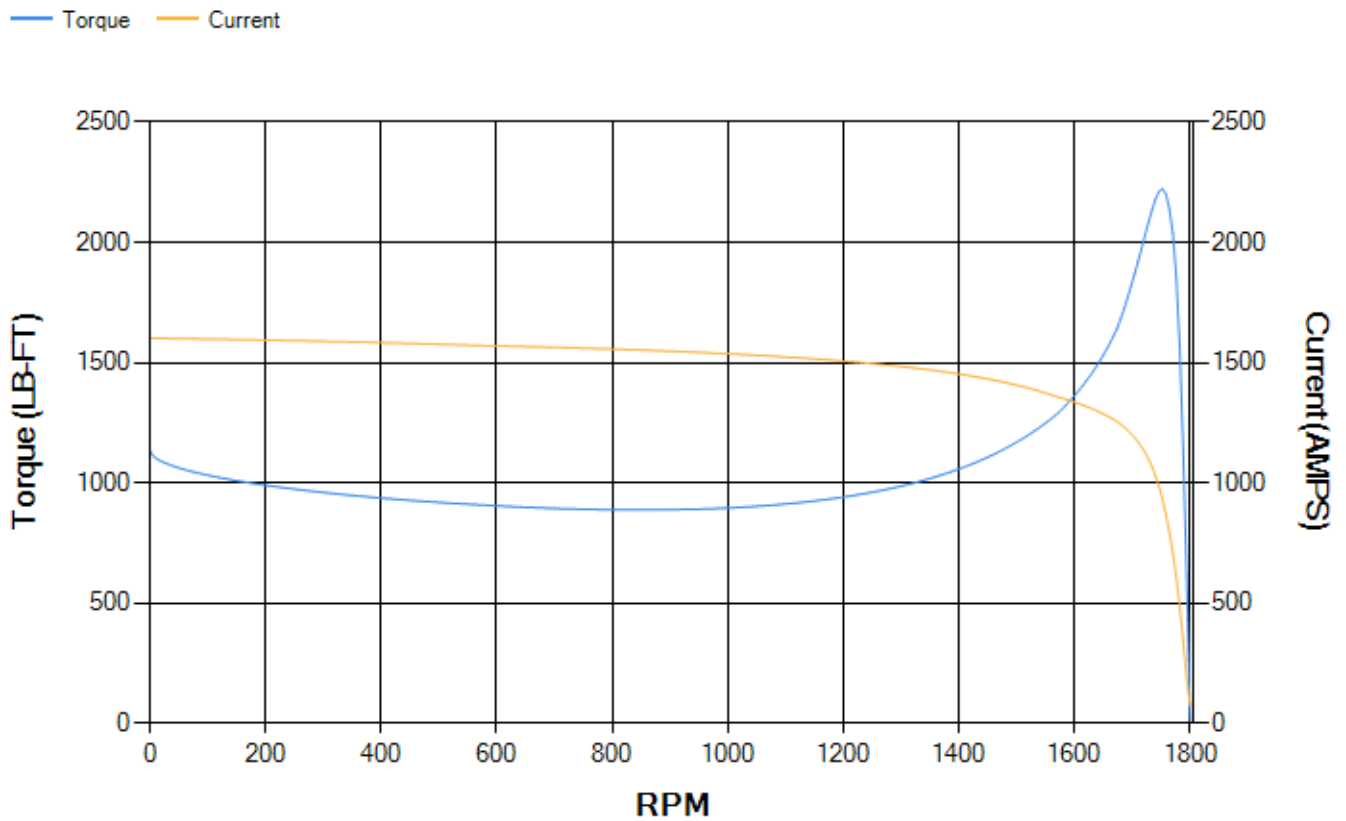
LOAD %	125.0	115.0	100.0	75.0	50.0	25.0	0.0
% EFF	95.66	95.84	96.26	96.23	95.91	93.85	0.00
% PF	88.71	88.75	88.47	86.55	80.63	61.72	4.43
AMPS	330.89	303.69	263.79	202.28	145.24	96.94	71.74

TORQ(FL)#FT	879.84	TORQ(LR)%FL	129.27	TORQ(BD)%FL	252.38
AMPS(LR)	1601.18	PF AT START	0.23		

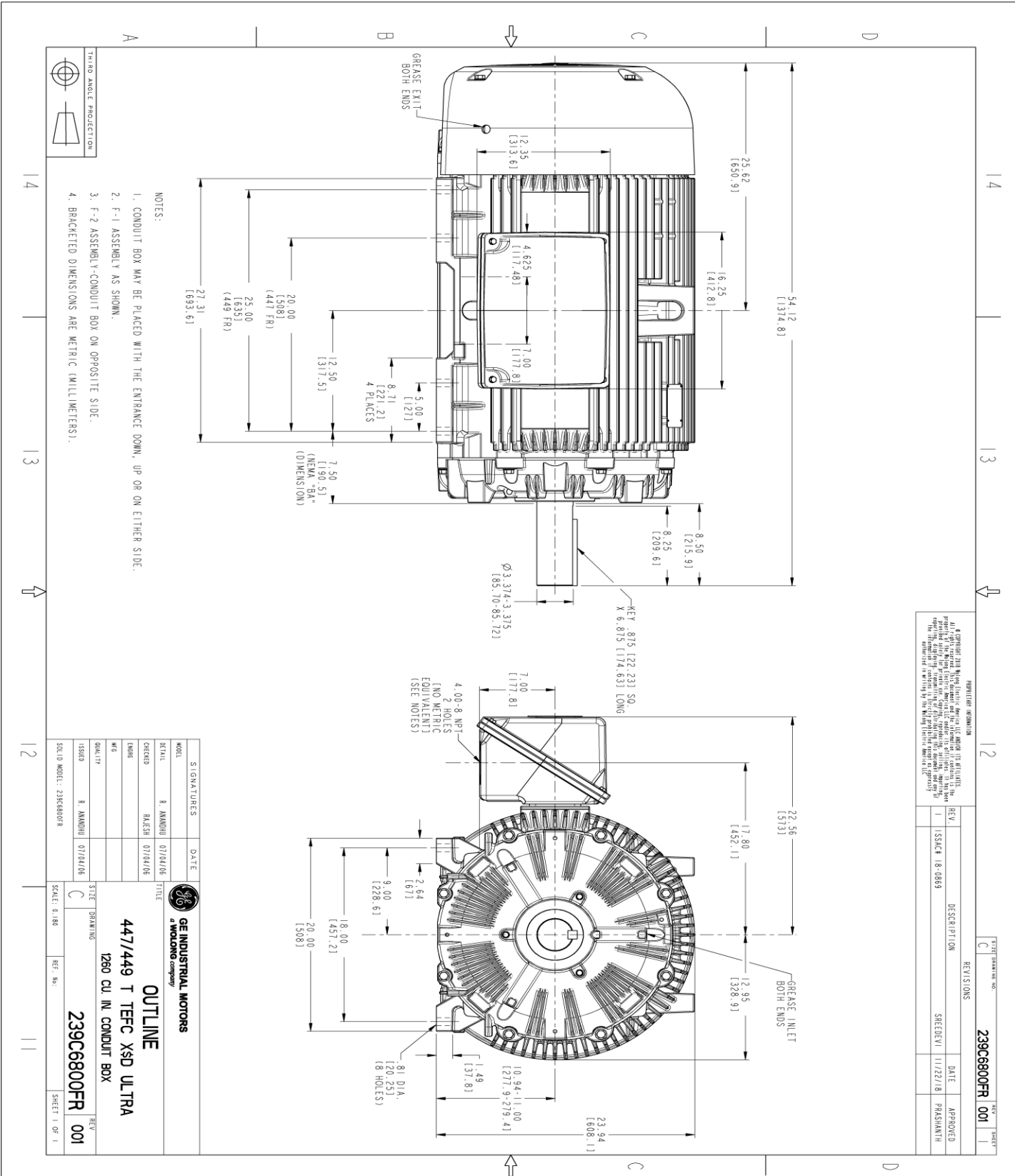
This motor is capable of two cold or one hot start with a maximum connected load inertia of 8380 Lb-Ft Sq (352.8 Kg-meter Sq) at 100% voltage, where the load torque varies with the square of the speed. Acceleration time with maximum inertia and the above load type is 66 seconds. Safe stall time at 100% voltage is 147 seconds cold, 79 seconds hot. Rotor inertia is 130.47 Lb-Ft Sq (5.49 Kg-meter Sq).

Open Circuit A-C:	1.778	Short Circuit D-C:	0.038
Short Circuit A-C:	0.072	X/R Ratio:	14.197
Stator Slots:	72	Rotor Slots:	58

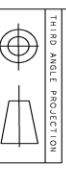
Speed Torque Current Curve (First Connection, First Speed)



Marks:



- NOTES:
1. CONDUIT BOX MAY BE PLACED WITH THE ENTRANCE DOWN, UP OR ON EITHER SIDE.
 2. F-1 ASSEMBLY AS SHOWN.
 3. F-2 ASSEMBLY-CONDUIT BOX ON OPPOSITE SIDE.
 4. BRACKETED DIMENSIONS ARE METRIC (MILLIMETERS).



THIRD ANGLE PROJECTION

SIGNATURES		DATE	TITLE
MODEL	R. AMANDHU	07/04/06	OUTLINE
CHECKED	RAJESH	07/04/06	
DESIGN			
DWG NO.			
QUALITY	R. AMANDHU	07/04/06	
ISSUED			
SCALE: 0.180	REF. NO:		

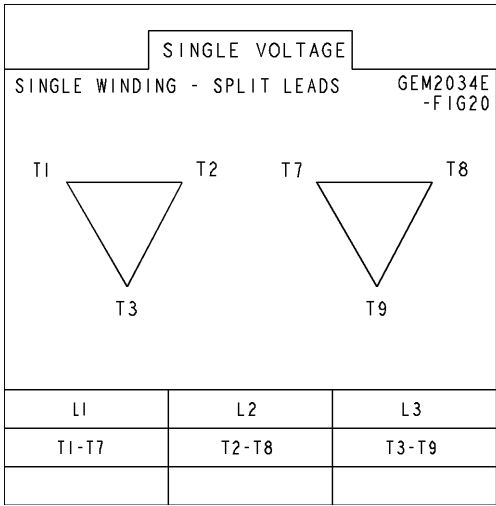
REV.	DESCRIPTION	DATE	APPROVED
1	ISSUE# 18-0869	11/22/18	PRASHANTH

STC Drawing No: **239C6800FR 001**

GE INDUSTRIAL MOTORS <small>a WOLONG company</small>		
OUTLINE		
447/449 T TEFC XSD ULTRA		
1260 CU. IN. CONDUIT BOX		
239C6800FR	REV. 001	SHEET 1 OF 1

Marks:

Connection Diagram
GEM2034E-FIG20



End shield Assembly		
Part Description	DE Side Part#	ODE Side Part#
End Shield	115E4355AA1	115E4355LM1
Bearing	235A2514AG01	235A2514AG01
Slinger/Inproseal	149C4399G07	149C4399G07

Fan & Fan Cover Assembly	
Part Description	Part#
Fan	159C7100G03
Fan Cover	128D6841AA1

Conduit & Accessories Box Assembly	
Part Description	Part#
Conduit Box	179B9058G03

Mechanical Accessories	
Part Description	Part#
Brake	
Tachometer	

