



GE INDUSTRIAL MOTORS
a **WOLONG** company

Product Technical Information

January 23, 2023

Data shown is for the current revision model #. Ensure your nameplate model # matches.

Model Number:	5KS445SAA209B
Catalog Number:	M9908
Instruction Manual:	GEI-56128
Connection Diagram:	GEM2034E-FIG20
Outline Drawing:	239C6600GX

Accessory Connection Diagrams

Bearing Thermocouple:	None	Heater:	None
RTD:	None	Thermistor:	None
Thermostat:	None	Winding Thermocouple:	None
Bearing RTD:	None		

Table of Contents

Specification	01
Performance Characteristics	02
Outline Drawing	03
Connection Drawing(s)	04
Spare parts	05

Marks:

MODEL NUMBER:	5KS445SAA209B	Estimated Weight:	2140 Lbs
Outline Drawing:	239C6600GX	Time Rating:	CONT
Connection Diagram:	GEM2034E-FIG20	Enclosure:	TEFC
Instruction Book:	GEI-56128	Encl Construction:	841
Design Code:	44BD1093A	Ambient Max(°C):	40
Type:	KS	Alt Ambient Max(°C):	--
Frame:	445T	Insulation Class:	H
Phases:	3	NEMA Design:	B
Poles:	4	Nominal Efficiency:	96.2 %
Output Power:	200HP 148KW	Guaranteed Efficiency:	95.8 %
RPM:	1790	3/4 Load Efficiency:	--
Voltage:	460	KVA Code:	G
Hertz:	60	Max KVAR:	51.6
Amps - FL:	225.0	Power Factor:	86.5
Service Factor:	1.15	Bearing - DE:	6318ZC3
Alt Service Factor:	--	Bearing - ODE:	6318ZC3

Enclosure is Totally Enclosed Fan-Cooled

Stamped Nameplate Notes:

IEEE STD 841-2021

STAMP NP249A5564P051 AS BELOW:

MODEL:5KS445SAA209B S/N: XXX

CSA CERTIFIED CSA09.2216219 FOR EX NA IIC 200 C GC

CL 1 ZONE2 AEX NA IIC 200C;CL 1 DIV2 GRP ABCD 200C

IN -40C <= AMB <= 40C, 1.0 SF ON SINE-WAVE PWR

SURF TEMP 215C AT 1.15SF ON SINE-WAVE PWR

OR 200C VT OR 215C CT OR 200C CHP PWM CONTROL

ALTERNATE RATING FOR PWM CONTROL 1.0SF 40C AMB

VT 0 - 60 HZ, CT 20-60 HZ, CHP 60-90 HZ.



Additional Information:

4P - T EXTN - SPLIT LEAD
C/BOX 700 CU IN - 3.00" NPT
OIL RESISTANT SLEEVING ON LEADS
.0015" TIR SHAFT RUNOUT
GROUND PAD
F1 MOUNTING
PAINTED FRAME ID & SHAFT,
FAN COVER INSIDE & ODE E/S OUTSIDE
ROUTINE TEST REPORT AND 5 POINT VIBRATION TEST
REPORT INCLUDED IN C/B



Performance Characteristics

1st Winding 1st Connection

Design: 44BD1093A

Marks:

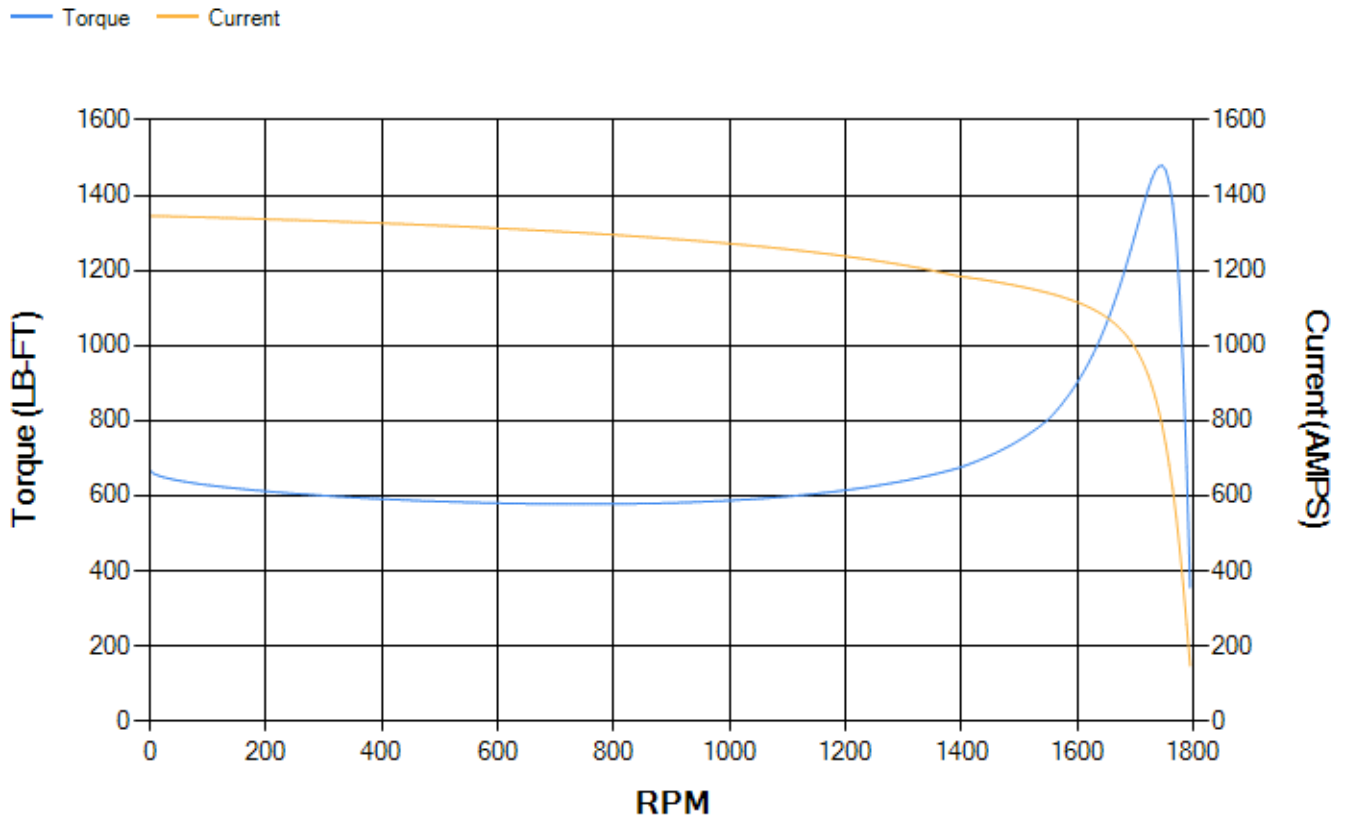
LOAD %	125.0	115.0	100.0	75.0	50.0	25.0	0.0
% EFF	95.93	96.07	96.43	96.3	95.87	93.61	0.00
% PF	87.3	87.14	86.49	83.66	76.12	55.19	3.88
AMPS	279.42	257.14	224.44	174.25	128.25	90.57	72.01

TORQ(FL)#FT	586.88	TORQ(LR)%FL	114.08	TORQ(BD)%FL	251.75
AMPS(LR)	1345.39	PF AT START	0.21		

This motor is capable of two cold or one hot start with a maximum connected load inertia of 4968 Lb-Ft Sq (209.15 Kg-meter Sq)at 100% voltage, where the load torque varies with the square of the speed. Acceleration time with maximum inertia and the above load type is 61 seconds. Safe stall time at 100% voltage is 124 seconds cold, 73 seconds hot. Rotor inertia is 79.64 Lb-Ft Sq (3.35 Kg-meter Sq).

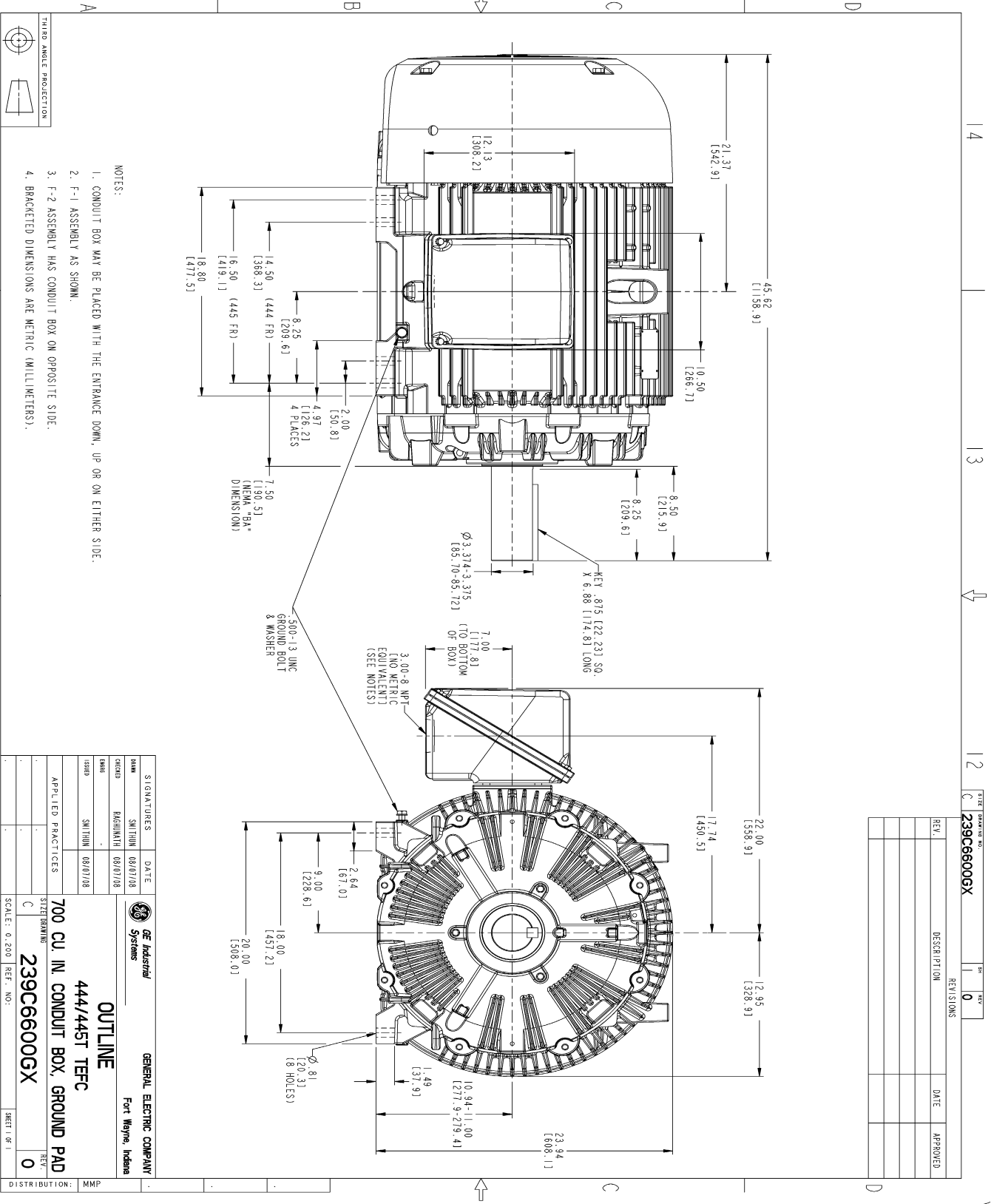
Open Circuit A-C:	1.341	Short Circuit D-C:	0.04
Short Circuit A-C:	0.067	X/R Ratio:	15.094
Stator Slots:	72	Rotor Slots:	58

Speed Torque Current Curve (First Connection, First Speed)



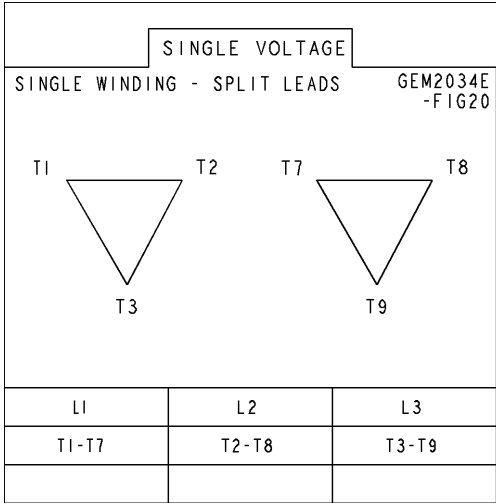
NAME:501291659 OBJECT:239C6600GX DATE:07-Aug-08 17:33:22

Marks:



Marks:

Connection Diagram
GEM2034E-FIG20



End shield Assembly		
Part Description	DE Side Part#	ODE Side Part#
End Shield	115E4355AA1	115E4355LM1
Bearing	235A2614AA01	235A2614AA01
Slinger/Inproseal	149C4399G07	149C4399G07

Fan & Fan Cover Assembly	
Part Description	Part#
Fan	159C7100G02
Fan Cover	128D6841AA1

Conduit & Accessories Box Assembly	
Part Description	Part#
Conduit Box	118D4408AD2

Mechanical Accessories	
Part Description	Part#
Brake	
Tachometer	

