



GE INDUSTRIAL MOTORS
a **WOLONG** company

Product Technical Information

January 18, 2021

Data shown is for the current revision model #. Ensure your nameplate model # matches.

| | |
|----------------------------|------------------------|
| Model Number: | 5KS364SAA218D11 |
| Catalog Number: | M9921 |
| Instruction Manual: | GEI-56128 |
| Connection Diagram: | GEM2034E-FIG7 |
| Outline Drawing: | 239C6200ACD |

Accessory Connection Diagrams

| | | | |
|------------------------------|------|------------------------------|------|
| Bearing Thermocouple: | None | Heater: | None |
| RTD: | None | Thermistor: | None |
| Thermostat: | None | Winding Thermocouple: | None |
| Bearing RTD: | None | | |

Table of Contents

| | |
|-----------------------------|----|
| Specification | 01 |
| Performance Characteristics | 02 |
| Outline Drawing | 03 |
| Connection Drawing(s) | 04 |
| Spare parts | 05 |

Marks:

| | | | |
|----------------------------|------------------------|-------------------------------|---------|
| MODEL NUMBER: | 5KS364SAA218D11 | Estimated Weight: | 970 Lbs |
| Outline Drawing: | 239C6200ACD | Time Rating: | CONT |
| Connection Diagram: | GEM2034E-FIG7 | Enclosure: | TEFC |
| Instruction Book: | GEI-56128 | Encl Construction: | 841 |
| Design Code: | 36BD1188A | Ambient Max(°C): | 40 |
| Type: | KS | Alt Ambient Max(°C): | -- |
| Frame: | 364TS | Insulation Class: | H |
| Phases: | 3 | NEMA Design: | B |
| Poles: | 4 | Nominal Efficiency: | 95.0 % |
| Output Power: | 60HP 44.4KW | Guaranteed Efficiency: | 94.5 % |
| RPM: | 1780 | 3/4 Load Efficiency: | -- |
| Voltage: | 460 | KVA Code: | G |
| Hertz: | 60 | Max KVAR: | 20.9 |
| Amps - FL: | 71.7 | Power Factor: | 82.5 |
| Service Factor: | 1.15 | Bearing - DE: | 6314ZC3 |
| Alt Service Factor: | -- | Bearing - ODE: | 6314ZC3 |

Enclosure is Totally Enclosed Fan-Cooled

Stamped Nameplate Notes:

IEEE-STD-841-2009
 DE BRG 70BC03JP30, ODE BRG 70BC03JP30
 STAMP NP249A5564P051 AS BELOW:
 MODEL:5KS364SAA218D11 S/N: XXX
 CSA CERTIFIED CSA09.2216219 FOR EX NA IIC 200 C GC
 CL 1 ZONE2 AEX NA IIC 200C;CL 1 DIV2 GRP ABCD 200C
 IN -40C <= AMB <= 40C, 1.0 SF ON SINE-WAVE PWR
 SURF TEMP 260C AT 1.15SF ON SINE-WAVE PWR
 OR 200C VT OR 230C CT OR 200C CHP PWM CONTROL
 ALTERNATE RATING FOR PWM CONTROL 1.0SF 40C AMB
 VT 0 - 60 HZ, CT 6-60 HZ, CHP 60-90 HZ.



Additional Information:

4P - TS EXTN
PAINTED FRAME ID & SHAFT,
FAN COVER INSIDE & ODE E/S OUTSIDE
C/BOX 346 CU IN - 3.00" NPT
OIL RESISTANT SLEEVING ON LEADS
.0015" TIR SHAFT RUNOUT
ROUTINE TEST REPORT AND 5 POINT VIBRATION TEST
REPORT INCLUDED IN C/B
GROUND PAD
F1 MOUNTING



Performance Characteristics

1st Winding 1st Connection

Design: 36BD1188A

Marks:

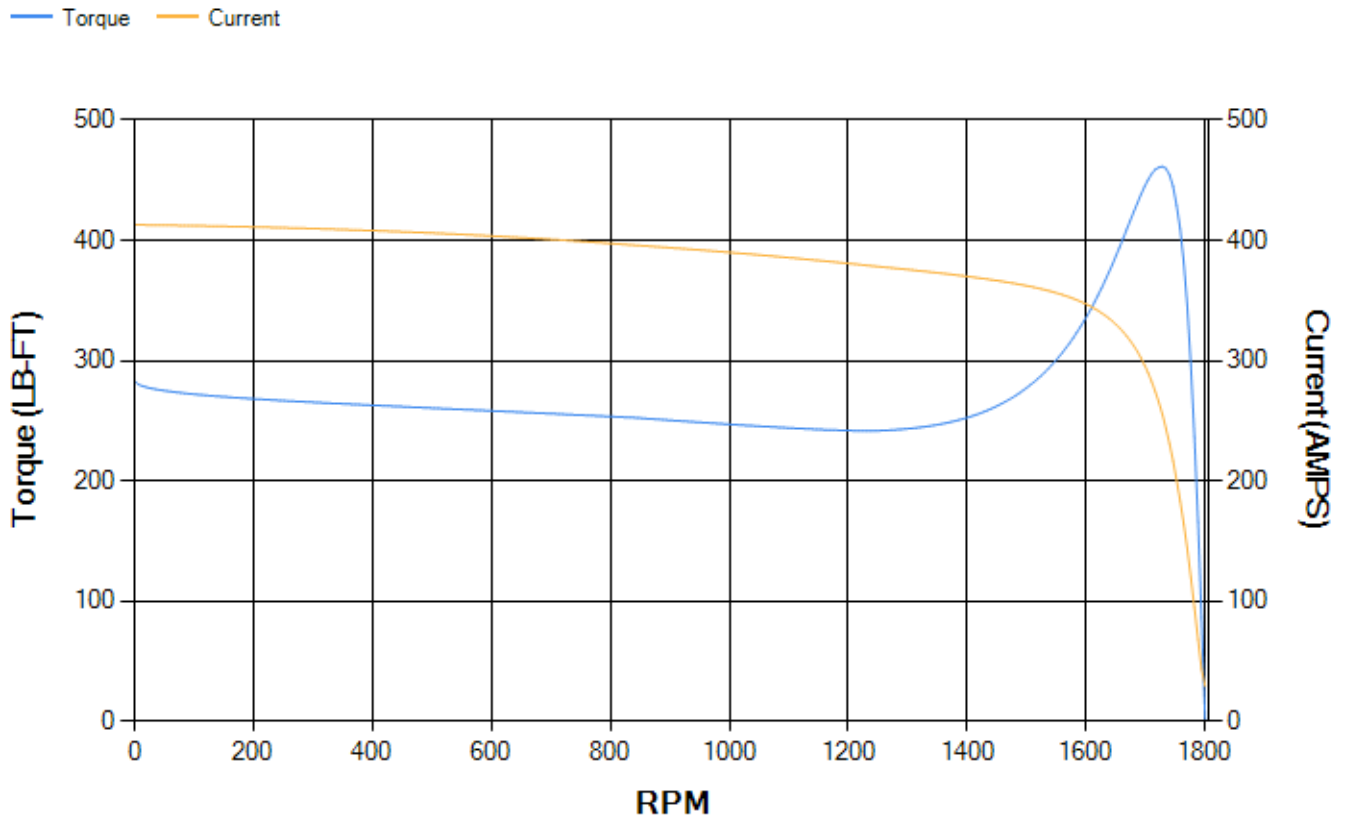
| LOAD % | 125.0 | 115.0 | 100.0 | 75.0 | 50.0 | 25.0 | 0.0 |
|--------|-------|-------|-------|-------|-------|-------|-------|
| % EFF | 94.37 | 94.62 | 95.12 | 95.18 | 94.85 | 92.37 | 0.00 |
| % PF | 84.32 | 83.76 | 82.36 | 77.74 | 67.51 | 44.89 | 3.18 |
| AMPS | 88.21 | 81.49 | 71.51 | 56.91 | 43.85 | 33.86 | 29.19 |

| | | | | | |
|--------------------|--------|--------------------|--------|--------------------|-------|
| TORQ(FL)#FT | 176.81 | TORQ(LR)%FL | 160.18 | TORQ(BD)%FL | 260.3 |
| AMPS(LR) | 412.91 | PF AT START | 0.31 | | |

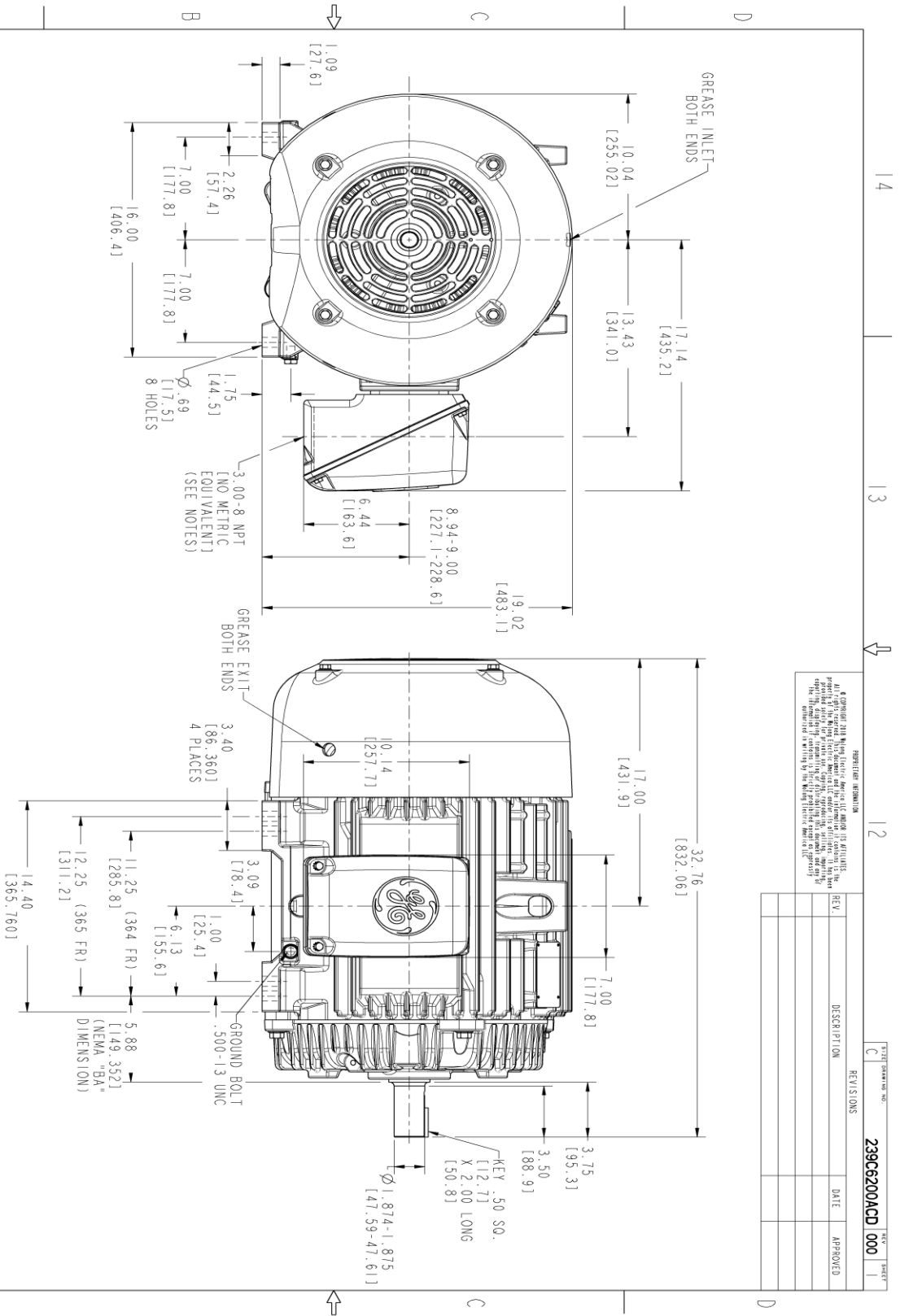
This motor is capable of two cold or one hot start with a maximum connected load inertia of 1190 Lb-Ft Sq (50.1 Kg-meter Sq)at 100% voltage, where the load torque varies with the square of the speed. Acceleration time with maximum inertia and the above load type is 33 seconds. Safe stall time at 100% voltage is 76 seconds cold, 39 seconds hot. Rotor inertia is 12.1 Lb-Ft Sq (0.51 Kg-meter Sq).

| | | | |
|---------------------------|-------|---------------------------|-------|
| Open Circuit A-C: | 0.601 | Short Circuit D-C: | 0.024 |
| Short Circuit A-C: | 0.035 | X/R Ratio: | 9.207 |
| Stator Slots: | 60 | Rotor Slots: | 50 |

Speed Torque Current Curve (First Connection, First Speed)



Marks:



- NOTES:
- CONDUIT BOX MAY BE PLACED WITH THE ENTRANCE DOWN, UP OR ON EITHER SIDE.
 - F-I ASM AS SHOWN.
 - ALL DIMENSION ARE IN INCHES. BRACKETED DIMENSIONS ARE METRIC (MILLIMETERS).

REGISTRATION INFORMATION
 © Copyright 2018 GE Industrial Motors. All rights reserved. This drawing is the property of GE Industrial Motors. It is to be used for the specific project and for the specific equipment only. It is not to be used for any other purpose without the written consent of GE Industrial Motors. The information contained herein is confidential and proprietary to GE Industrial Motors.

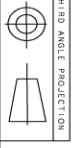
| REV. | DESCRIPTION | DATE | APPROVED |
|------|-------------|------|----------|
| | | | |
| | | | |

| | | |
|--------------|----------------------|--------------|
| SIGNATURES | | DATE |
| MODEL | HALDAS | 13/01/21 |
| RETAIL | HALDAS | 12/18/20 |
| CHECKED | VILAY | 12/18/20 |
| DRAWN | HALDAS | 12/18/20 |
| W/E | | |
| QUALITY | | |
| ISSUED | HALDAS | 12/18/20 |
| SCALE: 0.240 | REF. NO: 239C6200ACD | SHEET 1 OF 1 |

GE INDUSTRIAL MOTORS
 A WOLKONG COMPANY

OUTLINE
 364/365 TS TEFC XSD
 346 CU. IN. CONDUIT BOX

239C6200ACD
 REV



14 13 12 11

Marks:

Connection Diagram
GEM2034E-FIG7



| End shield Assembly | | |
|---------------------|---------------|----------------|
| Part Description | DE Side Part# | ODE Side Part# |
| End Shield | 115E4250AA1 | 115E4250LK1 |
| Bearing | 235A2516AC01 | 235A2516AC01 |
| Slinger/Inproseal | 149C4399G05 | 149C4399G05 |

| Fan & Fan Cover Assembly | |
|--------------------------|-------------|
| Part Description | Part# |
| Fan | 159C7100AA1 |
| Fan Cover | 128D6810AA1 |

| Conduit & Accessories Box Assembly | |
|------------------------------------|-------------|
| Part Description | Part# |
| Conduit Box | 149C4429AA2 |

| Mechanical Accessories | |
|------------------------|-------|
| Part Description | Part# |
| Brake | |
| Tachometer | |

