



GE INDUSTRIAL MOTORS
a **WOLONG** company

Product Technical Information

February 19, 2021

Data shown is for the current revision model #. Ensure your nameplate model # matches.

Model Number:	5KS324SAA118D17
Catalog Number:	M996
Instruction Manual:	GEI-56128
Connection Diagram:	GEM2034E-FIG7
Outline Drawing:	239C6000BD

Accessory Connection Diagrams

Bearing Thermocouple:	None	Heater:	None
RTD:	None	Thermistor:	None
Thermostat:	None	Winding Thermocouple:	None
Bearing RTD:	None		

Table of Contents

Specification	01
Performance Characteristics	02
Outline Drawing	03
Connection Drawing(s)	04
Spare parts	05

Marks:

MODEL NUMBER:	5KS324SAA118D17	Estimated Weight:	620 Lbs
Outline Drawing:	239C6000BD	Time Rating:	CONT
Connection Diagram:	GEM2034E-FIG7	Enclosure:	TEFC
Instruction Book:	GEI-56128	Encl Construction:	841
Design Code:	32BD0110A	Ambient Max(°C):	40
Type:	KS	Alt Ambient Max(°C):	--
Frame:	324TS	Insulation Class:	H
Phases:	3	NEMA Design:	B
Poles:	2	Nominal Efficiency:	93.0 %
Output Power:	40HP 29.6KW	Guaranteed Efficiency:	92.4 %
RPM:	3565	3/4 Load Efficiency:	--
Voltage:	460	KVA Code:	G
Hertz:	60	Max KVAR:	15.5
Amps - FL:	48.8	Power Factor:	82.5
Service Factor:	1.15	Bearing - DE:	6312ZC3
Alt Service Factor:	--	Bearing - ODE:	6312ZC3

Enclosure is Totally Enclosed Fan-Cooled

Stamped Nameplate Notes:

IEEE-STD-841-2009

DE BRG 60BC03JP30, ODE BRG 60BC03JP30

STAMP NP249A5564P051 AS BELOW:

MODEL:5KS324SAA118D17 S/N: XXX

CSA CERTIFIED CSA09.2216219 FOR EX NA IIC 200 C GC

CL 1 ZONE2 AEX NA IIC 200C;CL 1 DIV2 GRP ABCD 200C

IN -40C <= AMB <= 40C, 1.0 SF ON SINE-WAVE PWR

SURF TEMP 260C AT 1.15SF ON SINE-WAVE PWR

OR 200C VT OR 230C CT OR 200C CHP PWM CONTROL

ALTERNATE RATING FOR PWM CONTROL 1.0SF 40C AMB

VT 0 - 60 HZ, CT 8.6 - 60 HZ, CHP 60 - 75 HZ.



Additional Information:

2P - TS EXTN
PAINTED FRAME ID & SHAFT,
FAN COVER INSIDE & ODE E/S OUTSIDE
C/BOX 346 CU IN - 3.00" NPT
OIL RESISTANT SLEEVING ON LEADS
.0015" TIR SHAFT RUNOUT
ROUTINE TEST REPORT AND 5 POINT VIBRATION TEST
REPORT INCLUDED IN C/B
GROUND PAD
F1 MOUNTING



Performance Characteristics

1st Winding 1st Connection

Design: 32BD0110A

Marks:

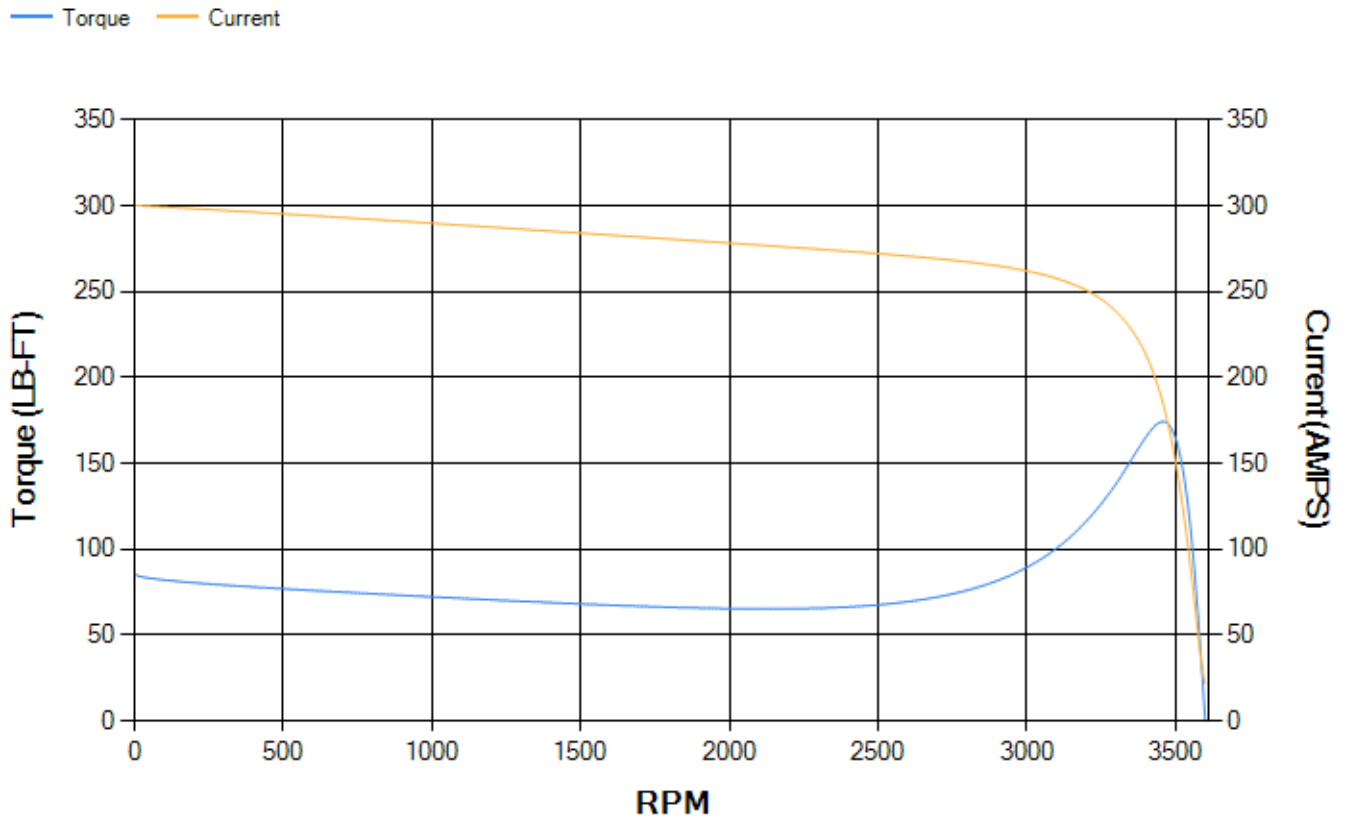
LOAD %	125.0	115.0	100.0	75.0	50.0	25.0	0.0
% EFF	92.47	92.67	93.06	92.79	91.69	86.97	0.00
% PF	84.8	84.01	82.26	76.97	66.05	43.76	5.58
AMPS	59.68	55.3	48.84	39.31	30.91	24.59	21.61

TORQ(FL)#FT 58.88 **TORQ(LR)%FL** 145.5 **TORQ(BD)%FL** 296.11
AMPS(LR) 300.43 **PF AT START** 0.29

This motor is capable of two cold or one hot start with a maximum connected load inertia of 117 Lb-Ft Sq (4.93 Kg-meter Sq)at 100% voltage, where the load torque varies with the square of the speed. Acceleration time with maximum inertia and the above load type is 23 seconds. Safe stall time at 100% voltage is 52 seconds cold, 27 seconds hot. Rotor inertia is 3.11 Lb-Ft Sq (0.13 Kg-meter Sq).

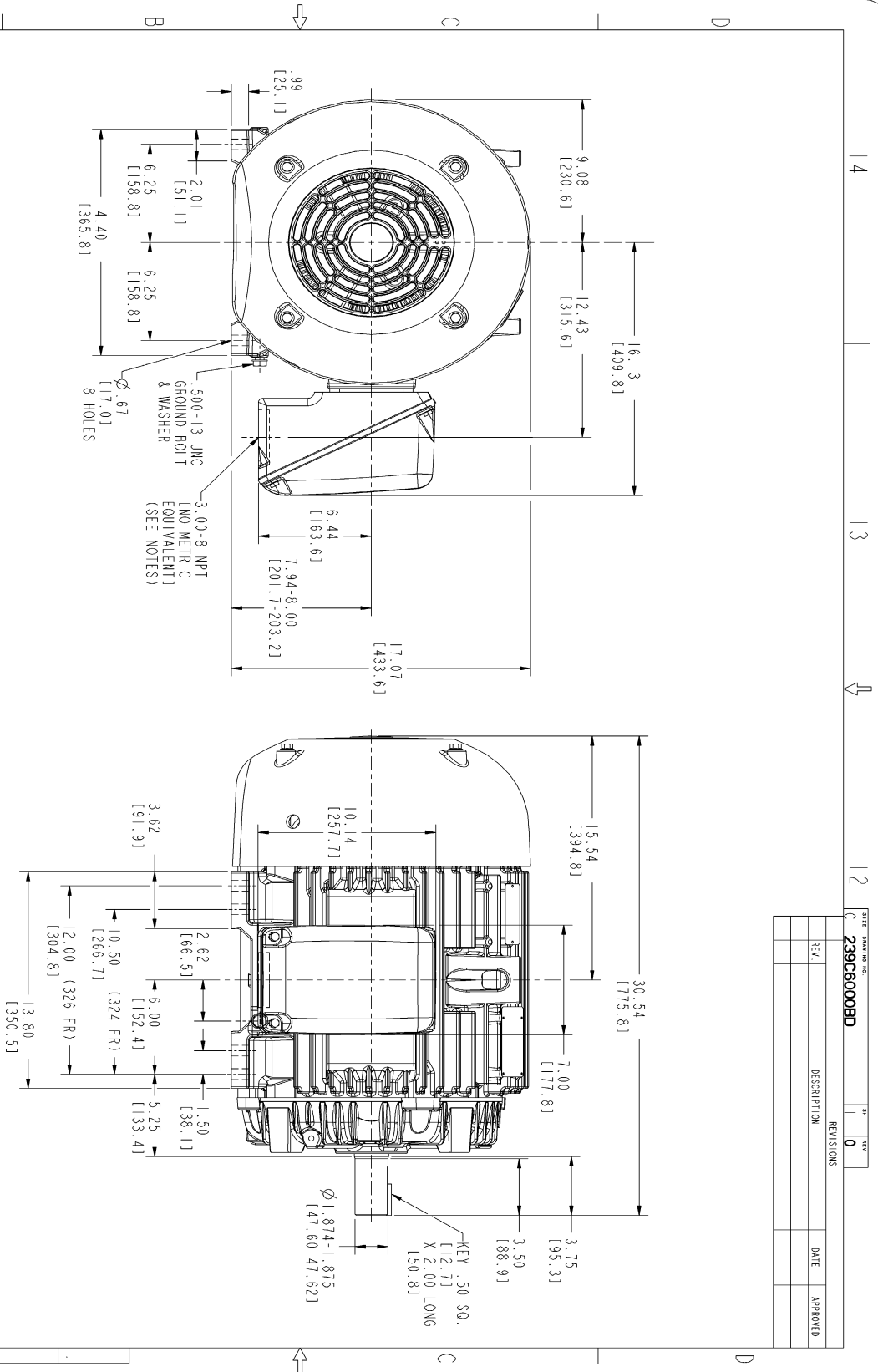
Open Circuit A-C: 0.598 **Short Circuit D-C:** 0.017
Short Circuit A-C: 0.041 **X/R Ratio:** 6.428
Stator Slots: 48 **Rotor Slots:** 38

Speed Torque Current Curve (First Connection, First Speed)

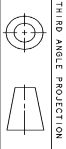


NAME: 103016807 OBJECT: 239C6000BD DATE: 08-May-03 13:06:37

Marks:



- NOTES:
- CONDUIT BOX MAY BE PLACED WITH THE ENTRANCE DOWN, UP OR ON EITHER SIDE.
 - F-1 ASM AS SHOWN.
 - F-2 ASM HAS CONDUIT BOX ON OPPOSITE SIDE.
 - BRACKETED DIMENSIONS ARE METRIC (MILLIMETERS).



DRAWING NO. 239C6000BD		REV. 0
REV.	DESCRIPTION	DATE

SIGNATURES	DATE	GENERAL ELECTRIC COMPANY Fort Wayne, Indiana
DRAWN P. RAJESH KUMAR CHECKED RAMANI DESIGNED P. RAJESH KUMAR APPLIED PRACTICES	05/07/03 05/07/03 05/07/03	
SCALE: 0.250 REF. NO.:		SHEET 01 OF 1

OUTLINE

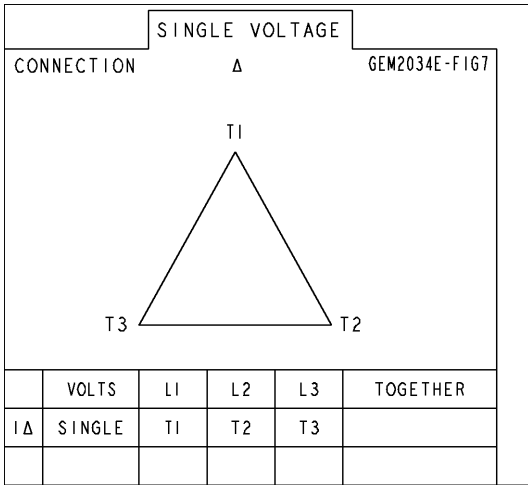
346 CU IN. CONDUIT BOX, GROUNDING PAD

239C6000BD

DISTRIBUTION: GE IMM

Marks:

Connection Diagram
GEM2034E-FIG7



End shield Assembly

Part Description	DE Side Part#	ODE Side Part#
End Shield	115E4200AA1	115E4200LA1
Bearing	235A2509AS01	235A2509AS01
Slinger/Inproseal	149C4399G04	149C4399G04

Fan & Fan Cover Assembly

Part Description	Part#
Fan	159C6700G02
Fan Cover	128D6800AA1

Conduit & Accessories Box Assembly

Part Description	Part#
Conduit Box	149C4429AA2

Mechanical Accessories

Part Description	Part#
Brake	
Tachometer	

