



GE INDUSTRIAL MOTORS
a **WOLONG** company

Product Technical Information

February 13, 2021

Data shown is for the current revision model #. Ensure your nameplate model # matches.

Model Number:	5KS447SAA118D15
Catalog Number:	M9961
Instruction Manual:	GEI-56128
Connection Diagram:	GEM2034E-FIG20
Outline Drawing:	239C6800ARL

Accessory Connection Diagrams

Bearing Thermocouple:	None	Heater:	None
RTD:	None	Thermistor:	None
Thermostat:	None	Winding Thermocouple:	None
Bearing RTD:	None		

Table of Contents

Specification	01
Performance Characteristics	02
Outline Drawing	03
Connection Drawing(s)	04
Spare parts	05

Marks:

MODEL NUMBER:	5KS447SAA118D15	Estimated Weight:	2840 Lbs
Outline Drawing:	239C6800ARL	Time Rating:	CONT
Connection Diagram:	GEM2034E-FIG20	Enclosure:	TEFC
Instruction Book:	GEI-56128	Encl Construction:	841
Design Code:	49BD0192A	Ambient Max(°C):	40
Type:	KS	Alt Ambient Max(°C):	--
Frame:	447TS	Insulation Class:	H
Phases:	3	NEMA Design:	B
Poles:	2	Nominal Efficiency:	95.4 %
Output Power:	200HP 148KW	Guaranteed Efficiency:	95.0 %
RPM:	3580	3/4 Load Efficiency:	--
Voltage:	460	KVA Code:	G
Hertz:	60	Max KVAR:	30.1
Amps - FL:	212.0	Power Factor:	92.5
Service Factor:	1.15	Bearing - DE:	6314ZC3
Alt Service Factor:	--	Bearing - ODE:	6314ZC3

Enclosure is Totally Enclosed Fan-Cooled

Stamped Nameplate Notes:

IEEE-STD-841-2009

DE BRG 70BC03JP30, ODE BRG 70BC03JP30

STAMP NP249A5564P051 AS BELOW:

MODEL:5KS447SAA118D15 S/N: XXX

CSA CERTIFIED CSA09.2216219 FOR EX NA IIC 200 C GC

CL 1 ZONE2 AEX NA IIC 200C;CL 1 DIV2 GRP ABCD 200C

IN -40C <= AMB <= 40C, 1.0 SF ON SINE-WAVE PWR

SURF TEMP 230C AT 1.15SF ON SINE-WAVE PWR

OR 200C VT OR 215C CT OR --C CHP PWM CONTROL

ALTERNATE RATING FOR PWM CONTROL 1.0SF 40C AMB

VT 0-60 HZ, CT 30-60 HZ, CHP -- HZ.



Additional Information:

2P - TS EXTN - SPLIT LEAD
PAINTED FRAME ID & SHAFT,
FAN COVER INSIDE & ODE E/S OUTSIDE
C/BOX 700 CU IN - 3.00" NPT
OIL RESISTANT SLEEVING ON LEADS
.0015" TIR SHAFT RUNOUT
ROUTINE TEST REPORT AND 5 POINT VIBRATION TEST
REPORT INCLUDED IN C/B
GROUND PAD
F1 MOUNTING



Performance Characteristics

1st Winding 1st Connection

Design: 49BD0192A

Marks:

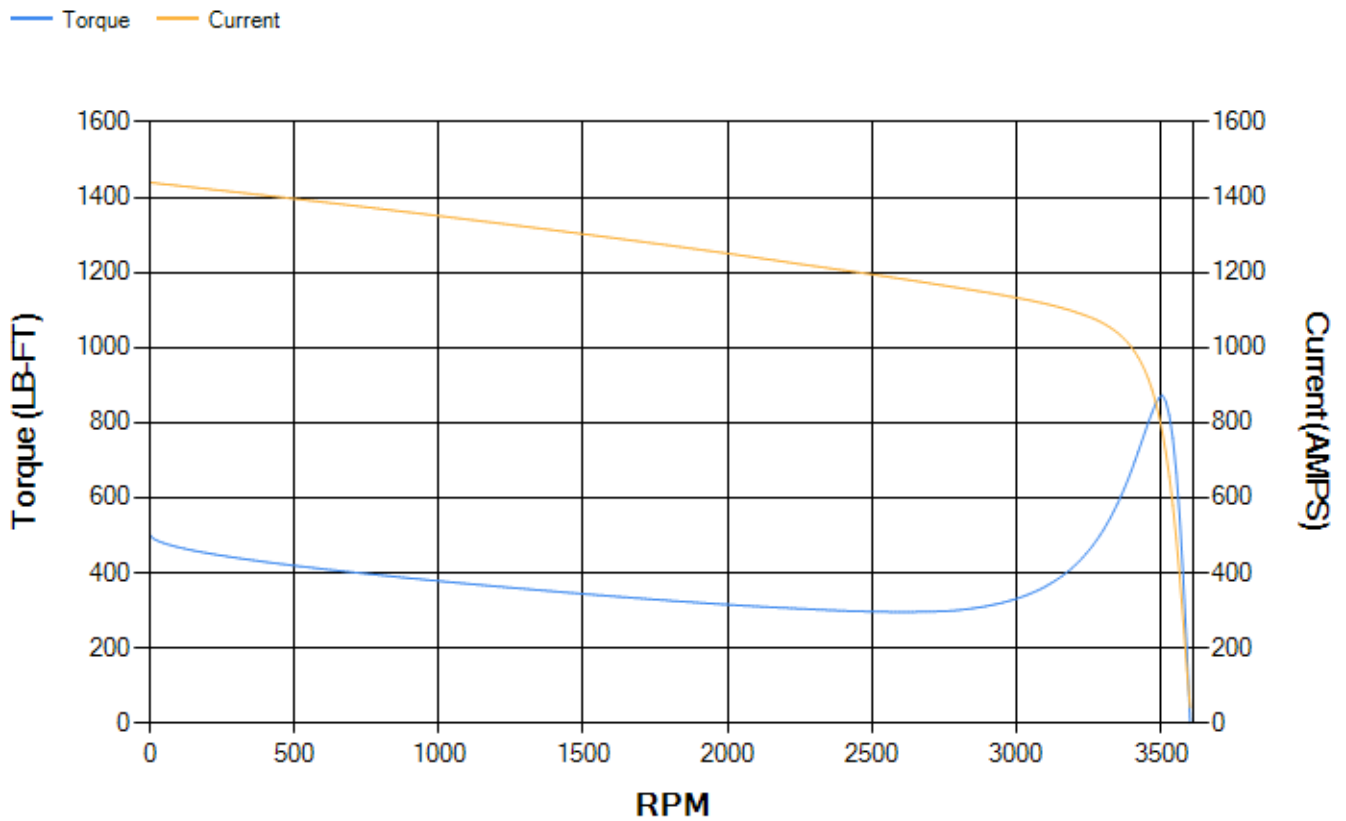
LOAD %	125.0	115.0	100.0	75.0	50.0	25.0	0.0
% EFF	95.27	95.46	95.87	95.81	95.4	93.01	0.00
% PF	92.06	92.25	92.31	91.5	88.08	74.3	7.35
AMPS	266.78	244.46	211.53	160.15	111.38	67.72	41.93

TORQ(FL)#FT	293.32	TORQ(LR)%FL	171.51	TORQ(BD)%FL	297.47
AMPS(LR)	1439.37	PF AT START	0.24		

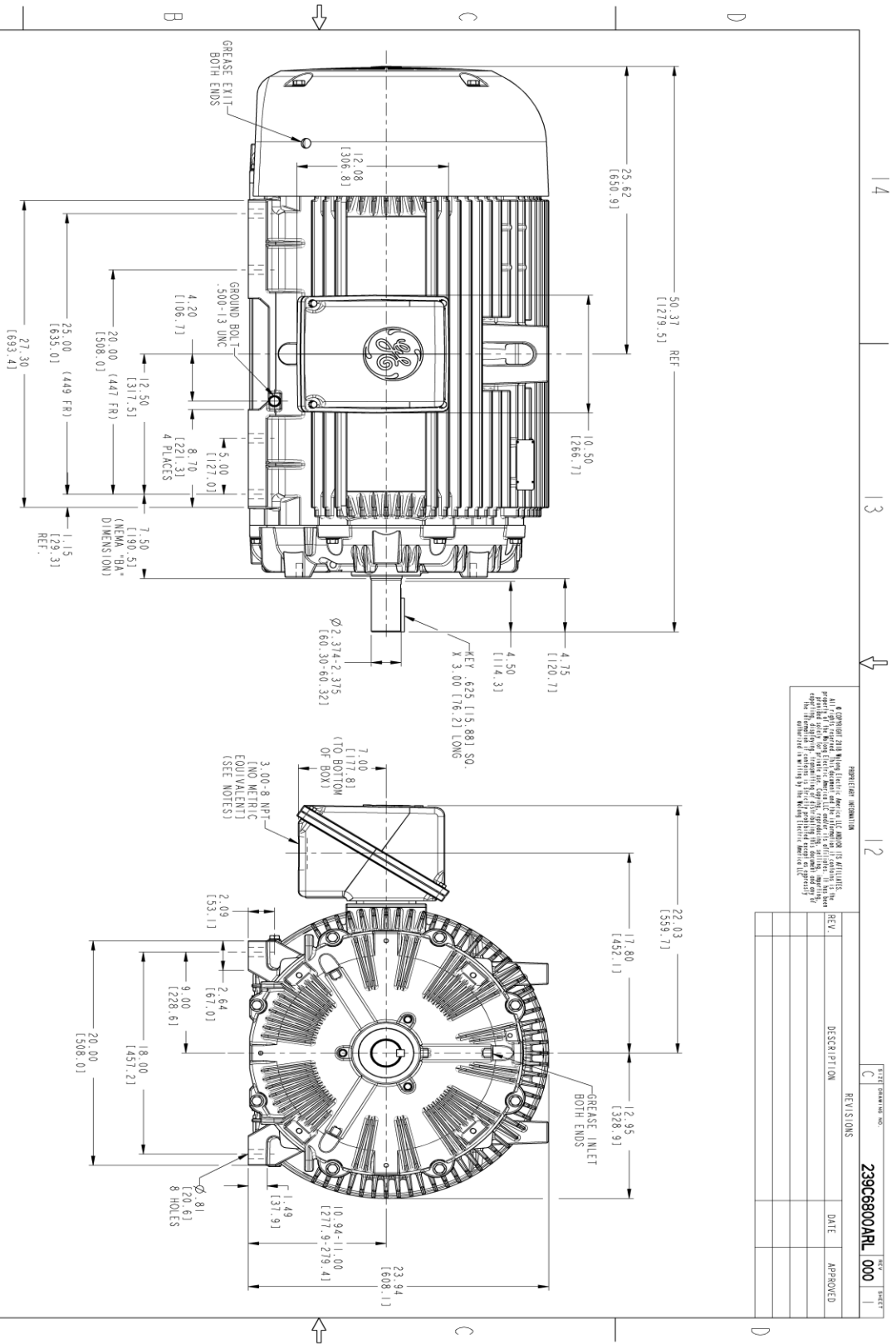
This motor is capable of two cold or one hot start with a maximum connected load inertia of 775 Lb-Ft Sq (32.63 Kg-meter Sq)at 100% voltage, where the load torque varies with the square of the speed. Acceleration time with maximum inertia and the above load type is 33 seconds. Safe stall time at 100% voltage is 75 seconds cold, 40 seconds hot. Rotor inertia is 51.17 Lb-Ft Sq (2.15 Kg-meter Sq).

Open Circuit A-C:	2.41	Short Circuit D-C:	0.034
Short Circuit A-C:	0.072	X/R Ratio:	12.927
Stator Slots:	48	Rotor Slots:	38

Speed Torque Current Curve (First Connection, First Speed)



Marks:



- NOTES:
1. CONDUIT BOX MAY BE PLACED WITH THE ENTRANCE DOWN, UP OR ON EITHER SIDE.
 2. F-1 ASSEMBLY AS SHOWN.
 3. ALL DIMENSIONS ARE IN INCHES AND BRACKETED DIMENSIONS ARE METRIC (MILLIMETERS).

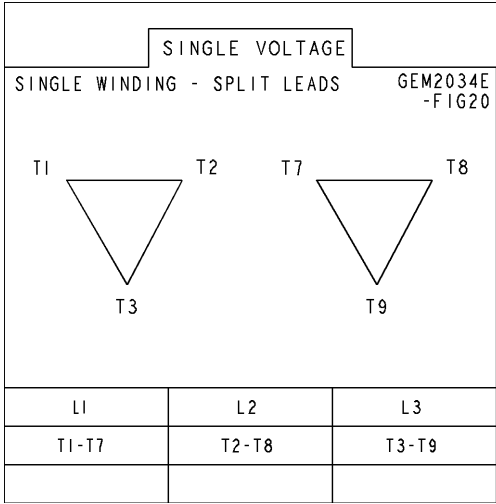
PROHIBITION INFORMATION
 GE and the GE logo are registered trademarks of General Electric Company. All other marks are the property of their respective owners. This drawing is the property of General Electric Company and is not to be reproduced, stored in a retrieval system, or transmitted in any form or by any means, electronic, mechanical, photocopying, recording, or by any information storage and retrieval system, without the prior written permission of General Electric Company.

REV.	DESCRIPTION	DATE	APPROVED

		TITLE OUTLINE 447/449 TS TEFC 700 CU. IN. C/BOX, GROUND PAD	
SIGNATURES SGAAR K (01/22/2021)		DATE 01/22/2021	
CHECKED SGAAR K (01/22/2021)		TITLE GE INDUSTRIAL MOTORS A WOLONG COMPANY	
DESIGNED SGAAR K (01/22/2021)		SCALE: 0.180	
DRAWN SGAAR K (01/22/2021)		REF. NO: 239C6800ARL	
ISSUED SGAAR K (01/22/2021)		SHEET 1 OF 1	
MODEL SGAAR K (01/22/2021)		239C6800ARL	

Marks:

Connection Diagram
GEM2034E-FIG20



End shield Assembly

Part Description	DE Side Part#	ODE Side Part#
End Shield	115E4354AA1	115E4354LL1
Bearing	235A2516AC01	235A2516AC01
Slinger/Inproseal	149C4399G05	149C4399G05

Fan & Fan Cover Assembly

Part Description	Part#
Fan	159C7100AA1
Fan Cover	128D6841AA1

Conduit & Accessories Box Assembly

Part Description	Part#
Conduit Box	118D4408AD2

Mechanical Accessories

Part Description	Part#
Brake	
Tachometer	

