



GE INDUSTRIAL MOTORS
a **WOLONG** company

Product Technical Information

June 22, 2020

Data shown is for the current revision model #. Ensure your nameplate model # matches.

Model Number:	5KS326SAA118D14
Catalog Number:	M997
Instruction Manual:	GEI-56128
Connection Diagram:	GEM2034E-FIG7
Outline Drawing:	239C6000AF

Accessory Connection Diagrams

Bearing Thermocouple:	None	Heater:	None
RTD:	None	Thermistor:	None
Thermostat:	None	Winding Thermocouple:	None
Bearing RTD:	None		

Table of Contents

Specification	01
Performance Characteristics	02
Outline Drawing	03
Connection Drawing(s)	04
Spare parts	05

Marks:

MODEL NUMBER:	5KS326SAA118D14	Estimated Weight:	670 Lbs
Outline Drawing:	239C6000AF	Time Rating:	CONT
Connection Diagram:	GEM2034E-FIG7	Enclosure:	TEFC
Instruction Book:	GEI-56128	Encl Construction:	X\$D
Design Code:	32BD0112A	Ambient Max(°C):	40
Type:	KS	Alt Ambient Max(°C):	55
Frame:	326TS	Insulation Class:	H
Phases:	3	NEMA Design:	B
Poles:	2	Nominal Efficiency:	93.0 %
Output Power:	50HP 37KW	Guaranteed Efficiency:	92.4 %
RPM:	3565	3/4 Load Efficiency:	93.8 %
Voltage:	460	KVA Code:	G
Hertz:	60	Max KVAR:	15.1
Amps - FL:	58.5	Power Factor:	86.0
Service Factor:	1.15	Bearing - DE:	6312ZC3
Alt Service Factor:	1.00	Bearing - ODE:	6312ZC3

Enclosure is Totally Enclosed Fan-Cooled

Stamped Nameplate Notes:

STAMP NP249A5564P051 AS BELOW:
 MODEL:5KS326SAA118D14 S/N: XXX
 CSA CERTIFIED CSA09.2216219 FOR EX NA IIC 200 C GC
 CL 1 ZONE2 AEX NA IIC 200C;CL 1 DIV2 GRP ABCD 200C
 IN -40C <= AMB <= 40C, 1.0 SF ON SINE-WAVE PWR
 SURF TEMP 260C AT 1.15SF ON SINE-WAVE PWR
 OR 215C VT OR 230C CT OR 215C CHP PWM CONTROL
 ALTERNATE RATING FOR PWM CONTROL 1.0SF 40C AMB
 VT 0 - 60 HZ, CT 30-60 HZ, CHP 60-75 HZ.

Additional Information:

2P - TS EXTN
 346 CU IN - 3.00" NPT
 OIL RESISTANT SLEEVING ON LEADS
 F1 MOUNTING



Performance Characteristics

1st Winding 1st Connection

Design: 32BD0112A

Marks:

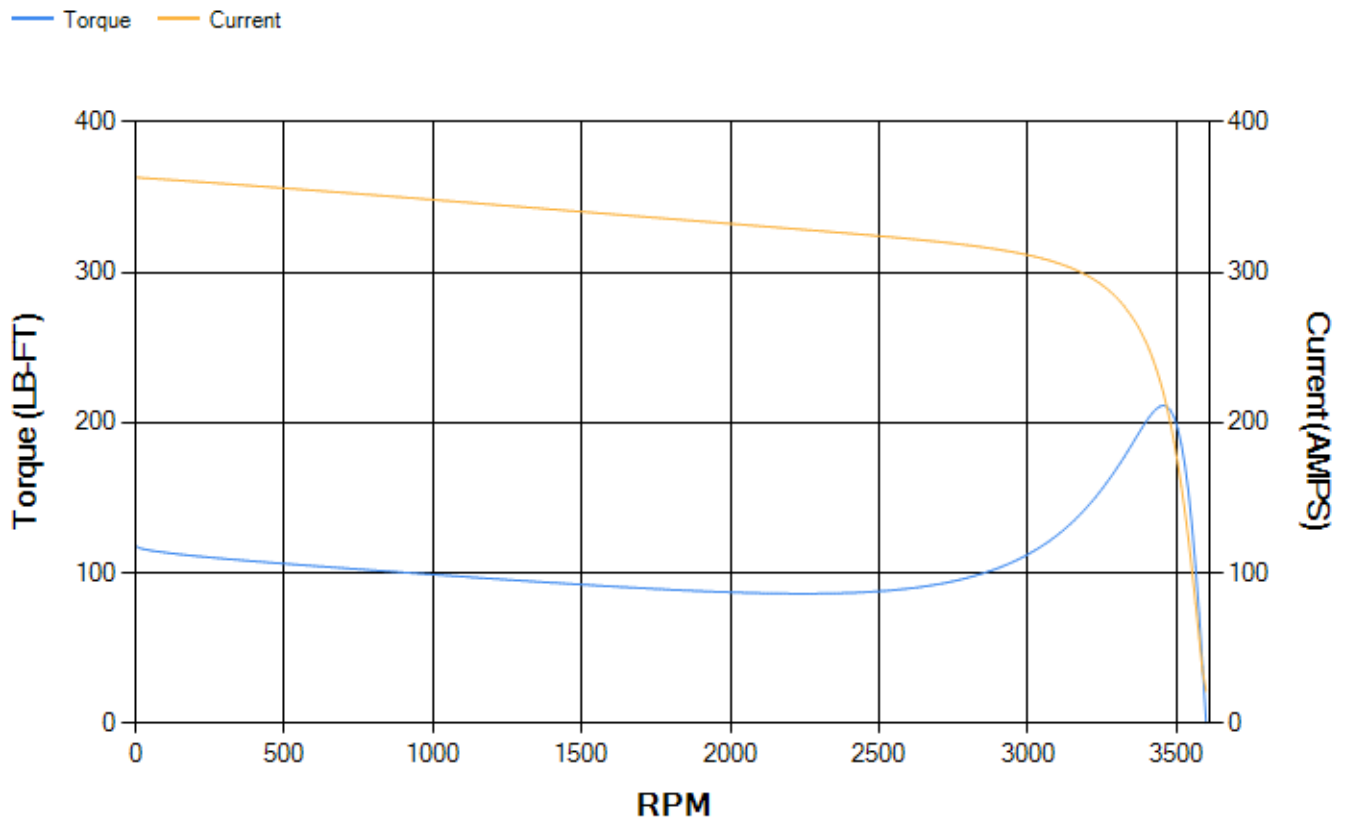
LOAD %	125.0	115.0	100.0	75.0	50.0	25.0	0.0
% EFF	93.06	93.31	93.8	93.75	93.07	89.44	0.00
% PF	87.6	87.16	86.04	82.19	73.18	51.26	5.52
AMPS	71.76	66.17	57.92	45.55	34.36	25.52	21.24

TORQ(FL)#FT	73.65	TORQ(LR)%FL	160.29	TORQ(BD)%FL	286.84
AMPS(LR)	363.26	PF AT START	0.31		

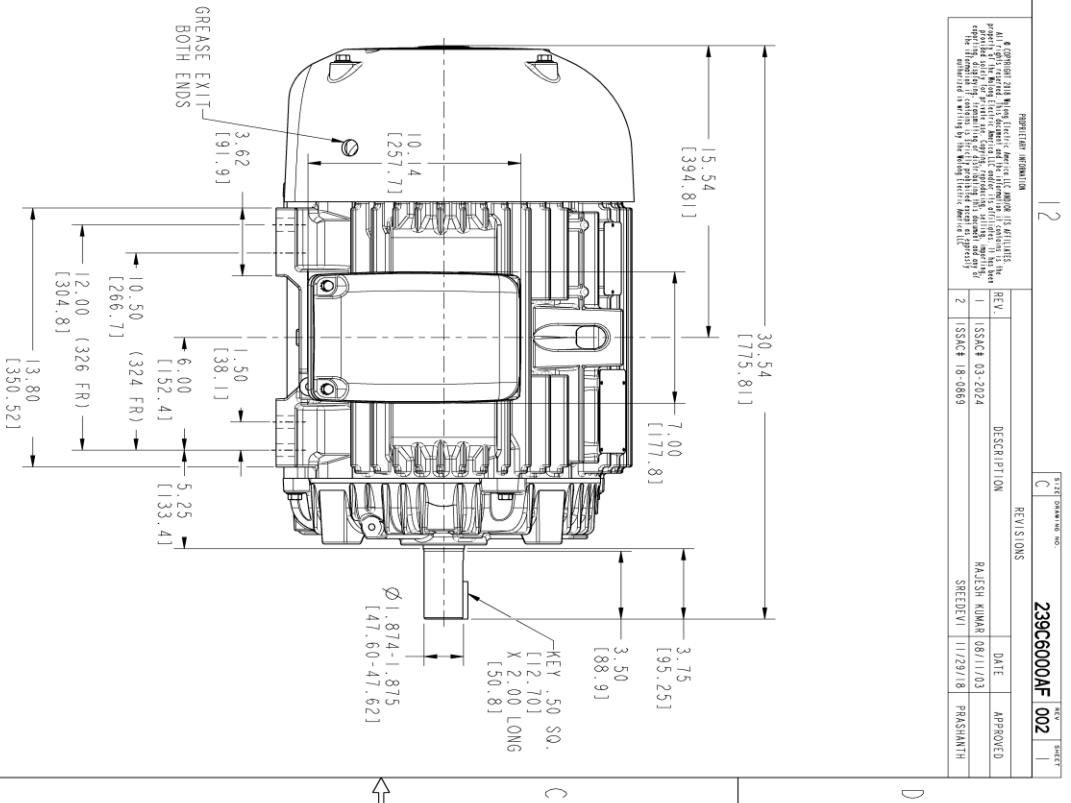
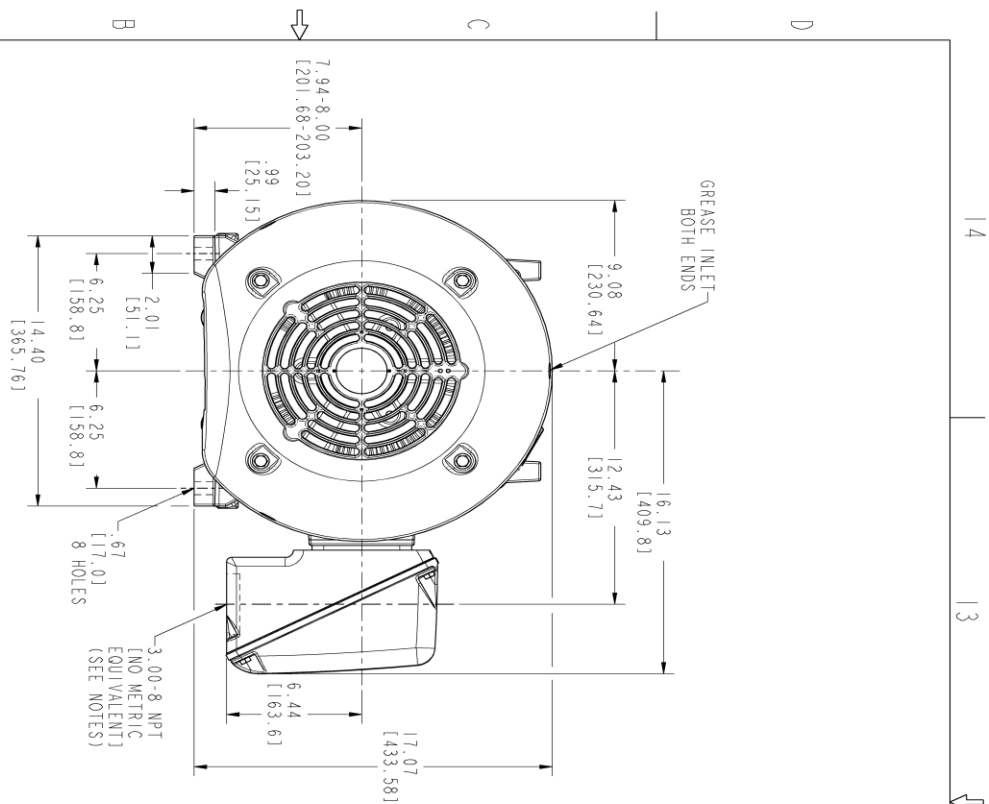
This motor is capable of two cold or one hot start with a maximum connected load inertia of 127 Lb-Ft Sq (5.35 Kg-meter Sq)at 100% voltage, where the load torque varies with the square of the speed. Acceleration time with maximum inertia and the above load type is 19 seconds. Safe stall time at 100% voltage is 45 seconds cold, 22 seconds hot. Rotor inertia is 4.02 Lb-Ft Sq (0.17 Kg-meter Sq).

Open Circuit A-C:	0.702	Short Circuit D-C:	0.018
Short Circuit A-C:	0.039	X/R Ratio:	6.692
Stator Slots:	48	Rotor Slots:	38

Speed Torque Current Curve (First Connection, First Speed)



Marks:



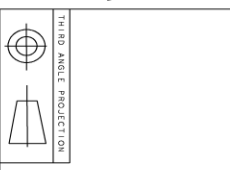
- NOTES:
- CONDUIT BOX MAY BE PLACED WITH THE ENTRANCE DOWN, UP OR ON EITHER SIDE.
 - F-1 ASM AS SHOWN.
 - F-2 ASM - HAS CONDUIT BOX ON OPPOSITE SIDE.
 - BRACKETED DIMENSIONS ARE METRIC (MILLIMETERS).

REGISTRATION INFORMATION

© COPYRIGHT 2018 GE Industrial Motors, Inc. All rights reserved. This drawing is the property of GE Industrial Motors, Inc. and is intended for use only in the design and construction of the equipment described herein. No other use or reproduction is permitted without the express written consent of GE Industrial Motors, Inc.

REV.	DESCRIPTION	DATE	APPROVED
1	ISSUE 03-2024	08/11/20	RAJESH KUMAR
2	ISSUE 18-0869	11/29/18	SRIDEVI

239C6000AF 002



SIGNATURES	DATE	REV
MODEL: MGRJAJ	03/31/02	TITLE
CHECKED: MANIVANNAN	03/31/02	324/326 TS TEFC
DESIGN: MGRJAJ	03/31/02	346 CU IN. CONDUIT BOX
ISSUED: MGRJAJ	03/31/02	239C6000AF
SCALE: 0.250	REF. NO.	SHEET 1 OF 1

GE INDUSTRIAL MOTORS
a WOLKING company

OUTLINE

324/326 TS TEFC

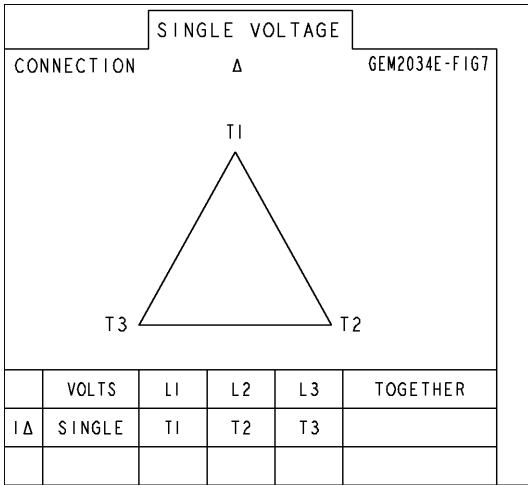
346 CU IN. CONDUIT BOX

239C6000AF

REV

Marks:

Connection Diagram
GEM2034E-FIG7



End shield Assembly		
Part Description	DE Side Part#	ODE Side Part#
End Shield	115E4200AA1	115E4200LA1
Bearing	235A2509AS01	235A2509AS01
Slinger/Inproseal	149C4399G04	149C4399G04

Fan & Fan Cover Assembly	
Part Description	Part#
Fan	159C6700G02
Fan Cover	128D6800AA1

Conduit & Accessories Box Assembly	
Part Description	Part#
Conduit Box	149C4429AA2

Mechanical Accessories	
Part Description	Part#
Brake	
Tachometer	

