



GE INDUSTRIAL MOTORS
a **WOLONG** company

Product Technical Information

January 18, 2021

Data shown is for the current revision model #. Ensure your nameplate model # matches.

Model Number:	5KS364SAA118D12
Catalog Number:	M998
Instruction Manual:	GEI-56128
Connection Diagram:	GEM2034E-FIG7
Outline Drawing:	239C6200ACD

Accessory Connection Diagrams

Bearing Thermocouple:	None	Heater:	None
RTD:	None	Thermistor:	None
Thermostat:	None	Winding Thermocouple:	None
Bearing RTD:	None		

Table of Contents

Specification	01
Performance Characteristics	02
Outline Drawing	03
Connection Drawing(s)	04
Spare parts	05

Marks:

MODEL NUMBER: 5KS364SAA118D12
Outline Drawing: 239C6200ACD
Connection Diagram: GEM2034E-FIG7
Instruction Book: GEI-56128
Design Code: 36BD0117A
Type: KS
Frame: 364TS
Phases: 3
Poles: 2
Output Power: 60HP 44.4KW
RPM: 3575
Voltage: 460
Hertz: 60
Amps - FL: 70.3
Service Factor: 1.15
Alt Service Factor: --

Estimated Weight: 970 Lbs
Time Rating: CONT
Enclosure: TEFC
Encl Construction: 841
Ambient Max(°C): 40
Alt Ambient Max(°C): --
Insulation Class: H
NEMA Design: B
Nominal Efficiency: 94.5 %
Guaranteed Efficiency: 94.1 %
3/4 Load Efficiency: --
KVA Code: G
Max KVAR: 19.4
Power Factor: 84.5
Bearing - DE: 6314ZC3
Bearing - ODE: 6314ZC3

Enclosure is Totally Enclosed Fan-Cooled

Stamped Nameplate Notes:

IEEE-STD-841-2009
 DE BRG 70BC03JP30, ODE BRG 70BC03JP30
 STAMP NP249A5564P051 AS BELOW:
 MODEL:5KS364SAA118D12 S/N: XXX
 CSA CERTIFIED CSA09.2216219 FOR EX NA IIC 200 C GC
 CL 1 ZONE2 AEX NA IIC 200C;CL 1 DIV2 GRP ABCD 200C
 IN -40C <= AMB <= 40C, 1.0 SF ON SINE-WAVE PWR
 SURF TEMP 215C AT 1.15SF ON SINE-WAVE PWR
 OR 200C VT OR 230C CT OR --C CHP PWM CONTROL
 ALTERNATE RATING FOR PWM CONTROL 1.0SF 40C AMB
 VT 0 - 60 HZ, CT 3-60 HZ, CHP -- HZ.



Additional Information:

2P - TS EXTN
PAINTED FRAME ID & SHAFT,
FAN COVER INSIDE & ODE E/S OUTSIDE
C/BOX 346 CU IN - 3.00" NPT
OIL RESISTANT SLEEVING ON LEADS
.0015" TIR SHAFT RUNOUT
ROUTINE TEST REPORT AND 5 POINT VIBRATION TEST
REPORT INCLUDED IN C/B
GROUND PAD
F1 MOUNTING



Performance Characteristics

1st Winding 1st Connection

Design: 36BD0117A

Marks:

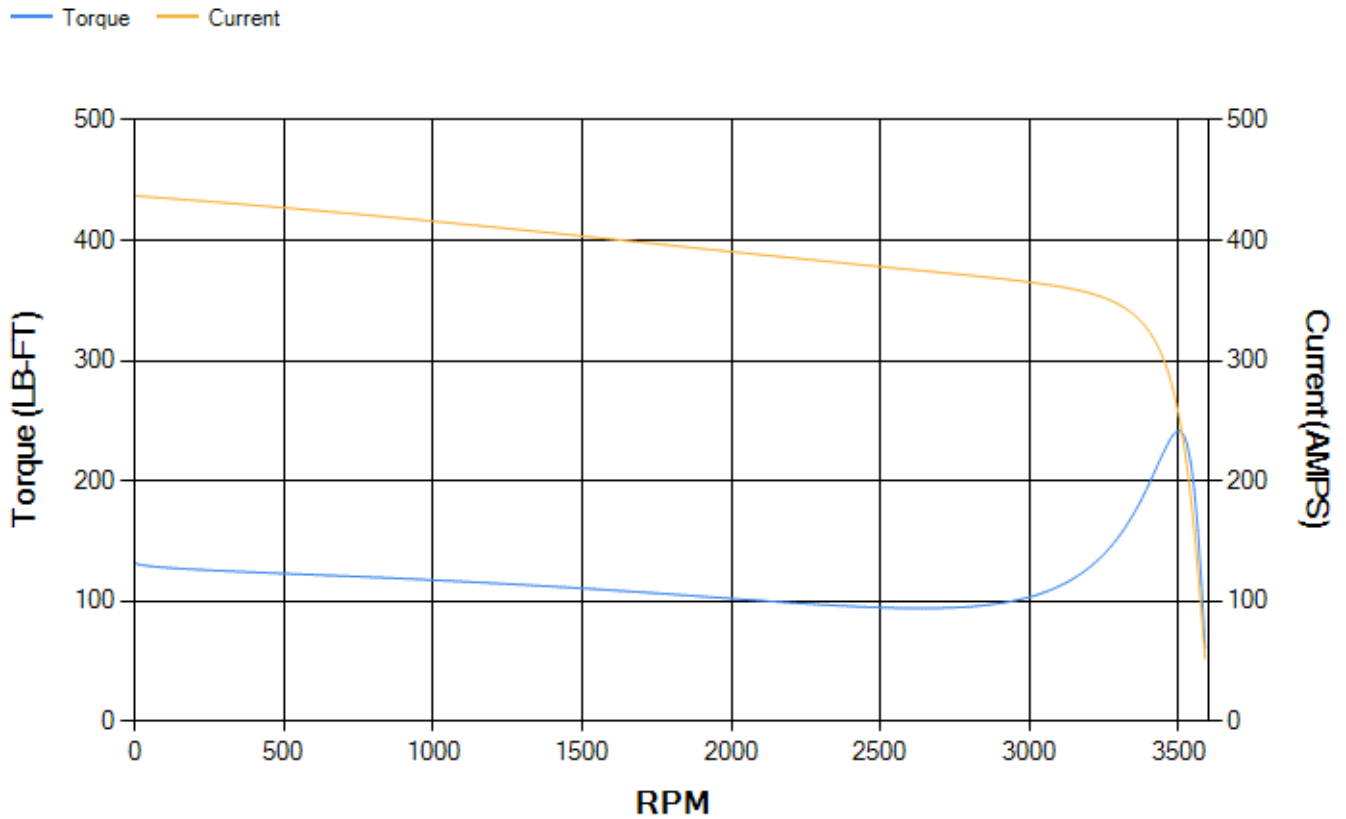
LOAD %	125.0	115.0	100.0	75.0	50.0	25.0	0.0
% EFF	94.24	94.41	94.79	94.59	93.84	90.34	0.00
% PF	86.22	85.73	84.5	80.34	70.83	48.62	4.71
AMPS	86.39	79.79	69.97	55.42	42.24	31.96	27.02

TORQ(FL)#FT	88.11	TORQ(LR)%FL	149.66	TORQ(BD)%FL	273.86
AMPS(LR)	437.11	PF AT START	0.3		

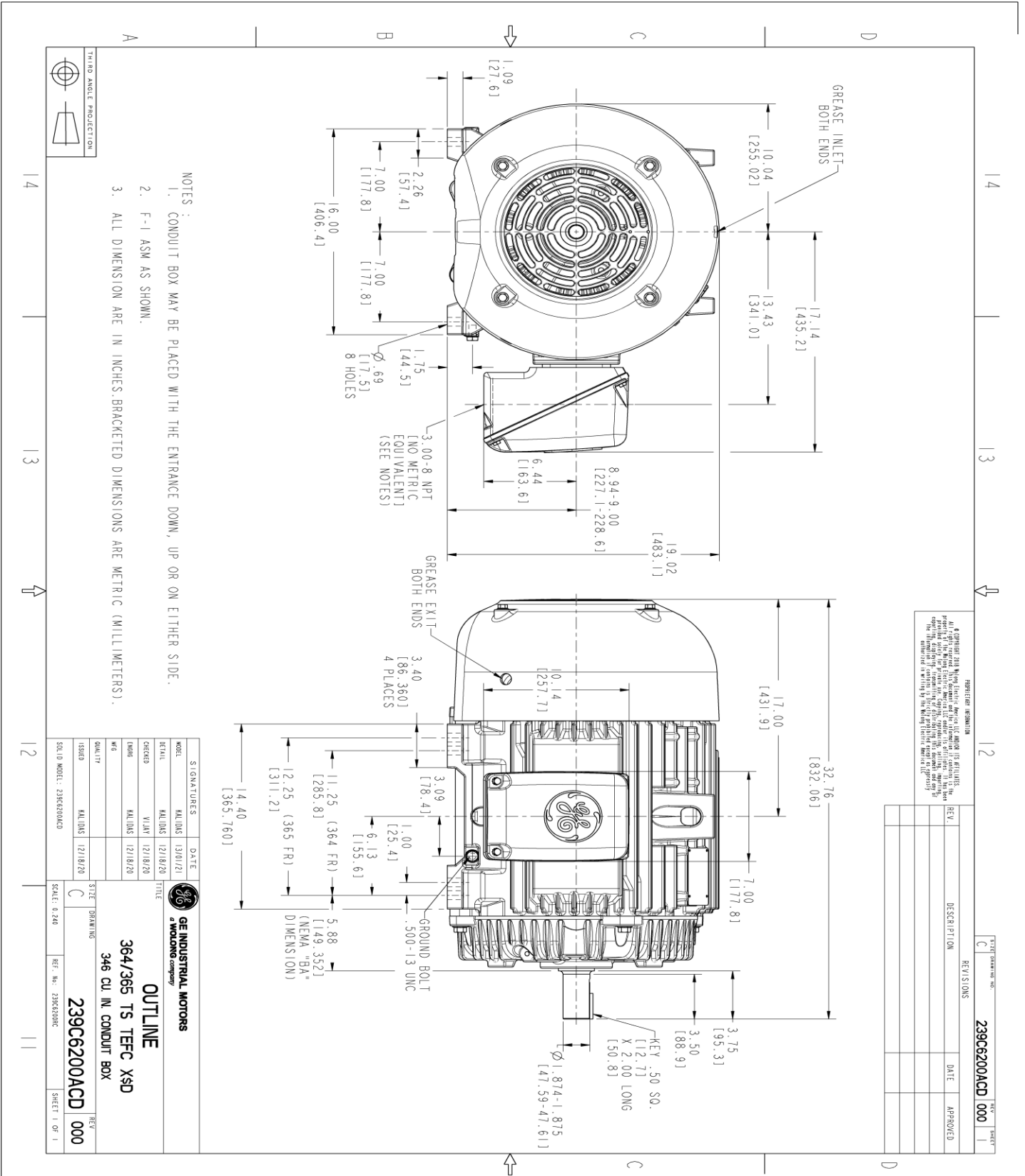
This motor is capable of two cold or one hot start with a maximum connected load inertia of 159 Lb-Ft Sq (6.69 Kg-meter Sq)at 100% voltage, where the load torque varies with the square of the speed. Acceleration time with maximum inertia and the above load type is 22 seconds. Safe stall time at 100% voltage is 46 seconds cold, 26 seconds hot. Rotor inertia is 6.96 Lb-Ft Sq (0.29 Kg-meter Sq).

Open Circuit A-C:	0.95	Short Circuit D-C:	0.023
Short Circuit A-C:	0.055	X/R Ratio:	8.805
Stator Slots:	48	Rotor Slots:	38

Speed Torque Current Curve (First Connection, First Speed)



Marks:



- NOTES:
1. CONDUIT BOX MAY BE PLACED WITH THE ENTRANCE DOWN, UP OR ON EITHER SIDE.
 2. F-I ASM AS SHOWN.
 3. ALL DIMENSION ARE IN INCHES. BRACKETED DIMENSIONS ARE METRIC (MILLIMETERS).

PROTECTION INFORMATION
 GE and the GE logo are registered trademarks of General Electric Company. All other marks are the property of their respective owners. © 2021 GE. All rights reserved. This document is for informational purposes only. It is not intended to be used as a substitute for the actual product or its specifications. The information contained herein is subject to change without notice.

REV.	DESCRIPTION	DATE	APPROVED

SIGNATURES	DATE
MODEL: MALDAS 1301/121	
RETAIL: MALDAS 121/18/20	
CHECKED: VILAY 121/18/20	
DRAWN: MALDAS 121/18/20	
W/E: MALDAS 121/18/20	
QUALITY: MALDAS 121/18/20	
ISSUED: MALDAS 121/18/20	
SCALE: 0.240	

GE INDUSTRIAL MOTORS
 A WOLKONG COMPANY

OUTLINE
 364/365 TS TEFC XSD
 346 CU. IN. CONDUIT BOX

239C6200ACD

REV: 000
 SHEET 1 OF 1

Marks:

Connection Diagram
GEM2034E-FIG7



End shield Assembly		
Part Description	DE Side Part#	ODE Side Part#
End Shield	115E4250AA1	115E4250LK1
Bearing	235A2516AC01	235A2516AC01
Slinger/Inproseal	149C4399G05	149C4399G05

Fan & Fan Cover Assembly	
Part Description	Part#
Fan	159C6700G02
Fan Cover	128D6810AA1

Conduit & Accessories Box Assembly	
Part Description	Part#
Conduit Box	149C4429AA2

Mechanical Accessories	
Part Description	Part#
Brake	
Tachometer	

