



GE INDUSTRIAL MOTORS
a **WOLONG** company

Product Technical Information

May 6, 2021

Data shown is for the current revision model #. Ensure your nameplate model # matches.

Model Number:	5KS449SAA146D6
Catalog Number:	M9996
Instruction Manual:	GEI-56128
Connection Diagram:	GEM2034E-FIG20
Outline Drawing:	239C6800ARK

Accessory Connection Diagrams

Bearing Thermocouple:	None	Heater:	None
RTD:	None	Thermistor:	None
Thermostat:	None	Winding Thermocouple:	None
Bearing RTD:	None		

Table of Contents

Specification	01
Performance Characteristics	02
Outline Drawing	03
Connection Drawing(s)	04
Spare parts	05

Marks:

MODEL NUMBER:	5KS449SAA146D6	Estimated Weight:	2770 Lbs
Outline Drawing:	239C6800ARK	Time Rating:	CONT
Connection Diagram:	GEM2034E-FIG20	Enclosure:	TEFC
Instruction Book:	GEI-56128	Encl Construction:	841
Design Code:	49BD0193A	Ambient Max(°C):	40
Type:	KS	Alt Ambient Max(°C):	--
Frame:	449TS	Insulation Class:	H
Phases:	3	NEMA Design:	B
Poles:	2	Nominal Efficiency:	95.8 %
Output Power:	250HP 185KW	Guaranteed Efficiency:	95.4 %
RPM:	3580	3/4 Load Efficiency:	--
Voltage:	460	KVA Code:	G
Hertz:	60	Max KVAR:	39.2
Amps - FL:	264.0	Power Factor:	92.5
Service Factor:	1.15	Bearing - DE:	6314ZC3
Alt Service Factor:	--	Bearing - ODE:	6314ZC3

Enclosure is Totally Enclosed Fan-Cooled

Stamped Nameplate Notes:

IEEE-STD-841-2009

FOR DIRECT COUPLED LOAD ONLY

DE BRG 70BC03JP30, ODE BRG 70BC03JP30

ROT CCW FACING ODE LEAD/PH SEQ 3-2-1/1-2-3

STAMP NP249A5564P051 AS BELOW:

MODEL:5KS449SAA146D6 S/N: XXX

CSA CERTIFIED CSA09.2216219 FOR EX NA IIC 200 C GC

CL 1 ZONE2 AEX NA IIC 200C;CL 1 DIV2 GRP ABCD 200C

IN -40C <= AMB <= 40C, 1.0 SF ON SINE-WAVE PWR

SURF TEMP 215C AT 1.15SF ON SINE-WAVE PWR

OR 200C VT OR 215C CT OR ---C CHP PWM CONTROL

ALTERNATE RATING FOR PWM CONTROL 1.0SF 40C AMB

VT 0 - 60 HZ, CT 45 - 60 HZ, CHP --- HZ.



Additional Information:

2P - TS EXTN - SPLIT LEAD
PAINTED FRAME ID & SHAFT,
FAN COVER INSIDE & ODE E/S OUTSIDE
C/BOX 1260 CU IN - 2(4.00" NPT)
C/B GRD PLATE
OIL RESISTANT SLEEVING ON LEADS
.0015" TIR SHAFT RUNOUT
ROUTINE TEST REPORT AND 5 POINT VIBRATION TEST
REPORT INCLUDED IN C/B
GROUND PAD
F1 MOUNTING



Performance Characteristics

1st Winding 1st Connection

Design: 49BD0193A

Marks:

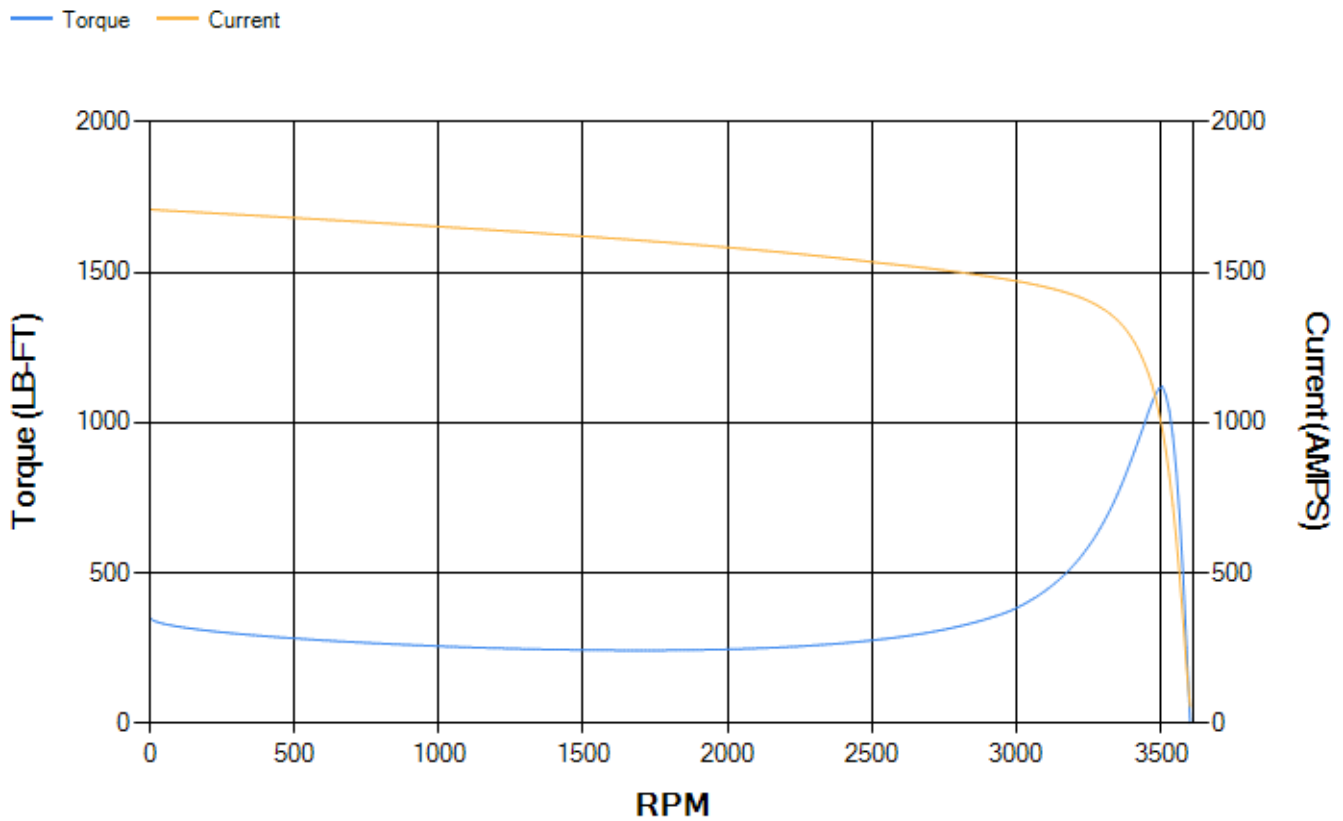
LOAD %	125.0	115.0	100.0	75.0	50.0	25.0	0.0
% EFF	95.5	95.7	96.15	96.17	95.93	94.01	0.00
% PF	92.15	92.29	92.28	91.3	87.55	72.84	5.84
AMPS	332.36	304.66	263.75	199.87	139.3	85.42	54.67

TORQ(FL)#FT	366.7	TORQ(LR)%FL	96.09	TORQ(BD)%FL	305.12
AMPS(LR)	1709.42	PF AT START	0.18		

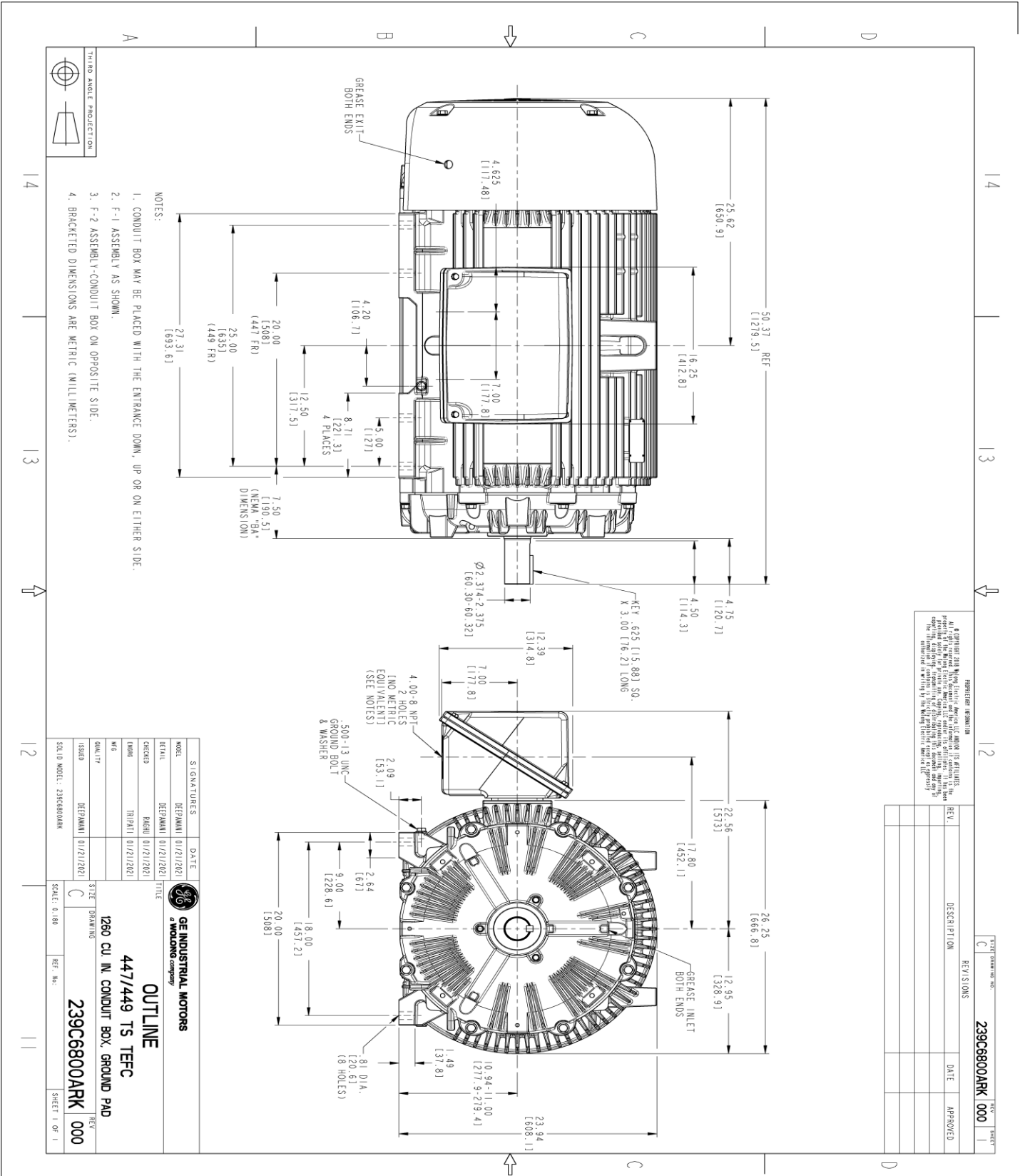
This motor is capable of two cold or one hot start with a maximum connected load inertia of 725 Lb-Ft Sq (30.52 Kg-meter Sq)at 100% voltage, where the load torque varies with the square of the speed. Acceleration time with maximum inertia and the above load type is 42 seconds. Safe stall time at 100% voltage is 98 seconds cold, 50 seconds hot. Rotor inertia is 48.07 Lb-Ft Sq (2.02 Kg-meter Sq).

Open Circuit A-C:	2.243	Short Circuit D-C:	0.037
Short Circuit A-C:	0.075	X/R Ratio:	13.782
Stator Slots:	48	Rotor Slots:	38

Speed Torque Current Curve (First Connection, First Speed)



Marks:



NOTES:

1. CONDUIT BOX MAY BE PLACED WITH THE ENTRANCE DOWN, UP OR ON EITHER SIDE.
2. F-1 ASSEMBLY AS SHOWN.
3. F-2 ASSEMBLY CONDUIT BOX ON OPPOSITE SIDE.
4. BRACKETED DIMENSIONS ARE METRIC (MILLIMETERS).

PROHIBITED INFORMATION
 All rights reserved. This document contains confidential information of GE Industrial Motors. It is intended for internal use only. It is not to be distributed, copied, or used in any way without the express written permission of GE Industrial Motors. The information contained herein is the property of GE Industrial Motors and is confidential.

REV.	DESCRIPTION	DATE	APPROVED

SHEET DRAWING NO.	239C6800ARK 000
REV'S/DIMS	
DATE	
APPROVED	



THIRD ANGLE PROJECTION

SIGNATURES	DATE	TITLE
MODEL: DEPMANN [01/21/2021]		
REVIEW: DEPMANN [01/21/2021]		
CHECKED: BAGHI [01/21/2021]		
DRAWN: TRINATI [01/21/2021]		
ISSUED: DEPMANN [01/21/2021]		
SCALE: 0.180		

GE INDUSTRIAL MOTORS
 a WOLONG company

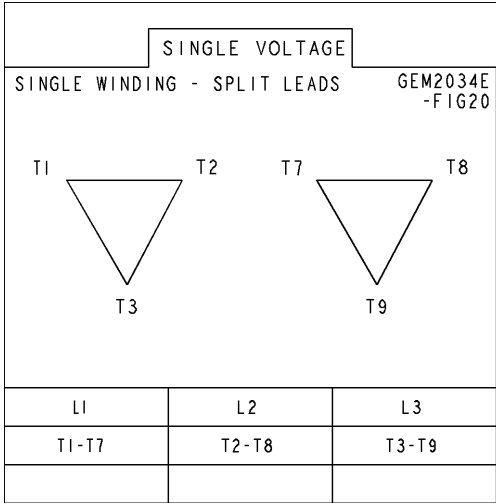
OUTLINE
 447/449 TS TEFC
 1260 CU IN CONDUIT BOX, GROUND PAD

239C6800ARK 000

SHEET 1 OF 1

Marks:

Connection Diagram
GEM2034E-FIG20



End shield Assembly		
Part Description	DE Side Part#	ODE Side Part#
End Shield	115E4354AA1	115E4354LL1
Bearing	235A2516AC01	235A2516AC01
Slinger/Inproseal	149C4399G05	149C4399G05

Fan & Fan Cover Assembly	
Part Description	Part#
Fan	149C4287AA2
Fan Cover	128D6841AC1

Conduit & Accessories Box Assembly	
Part Description	Part#
Conduit Box	179B9058G03

Mechanical Accessories	
Part Description	Part#
Brake	
Tachometer	

