

BALDOR® • RELIANCE 

Product Information Packet

NM3455

.25HP, 1140RPM, 3PH, 60HZ, 48, 3411M, TENV, F1

| Part Detail | | | | | | | |
|-------------|--------|-------------|------------|-------------|--------|---------------|----|
| Revision: | S | Status: | PRD/A | Change #: | | Proprietary: | No |
| Type: | AC | Elec. Spec: | 34WG5882 | CD Diagram: | CD0005 | Mfg Plant: | |
| Mech. Spec: | 34L051 | Layout: | 34LYL051 | Poles: | 06 | Created Date: | |
| Base: | RG | Eff. Date: | 07-16-2018 | Leads: | 9#18 | | |

| Specs | | | |
|---------------------------------|-------------------------|--------------------------------|--------------------|
| Catalog Number: | NM3455 | Insulation Class: | F |
| Enclosure: | TENV | Inverter Code: | Not Inverter |
| Frame: | 48 | KVA Code: | K |
| Frame Material: | Steel | Lifting Lugs: | No Lifting Lugs |
| Output @ Frequency: | .250 HP @ 60 HZ | Locked Bearing Indicator: | No Locked Bearing |
| Synchronous Speed @ Frequency: | 1200 RPM @ 60 HZ | Motor Lead Quantity/Wire Size: | 9 @ 18 AWG |
| Voltage @ Frequency: | 460.0 V @ 60 HZ | Motor Lead Exit: | Ko Box |
| | 230.0 V @ 60 HZ | Motor Lead Termination: | Flying Leads |
| XP Class and Group: | None | Motor Type: | 3411M |
| XP Division: | Not Applicable | Mounting Arrangement: | F1 |
| Agency Approvals: | CSA | Power Factor: | 51 |
| | UR | Product Family: | General Purpose |
| Auxillary Box: | No Auxillary Box | Pulley End Bearing Type: | Ball |
| Auxillary Box Lead Termination: | None | Pulley Face Code: | Standard |
| Base Indicator: | Rigid | Pulley Shaft Indicator: | Standard |
| Bearing Grease Type: | Polyrex EM (-20F +300F) | Rodent Screen: | None |
| Blower: | None | Shaft Extension Location: | Pulley End |
| Current @ Voltage: | .700 A @ 460.0 V | Shaft Ground Indicator: | No Shaft Grounding |

| | | | |
|---------------------------------------|---------------------------|------------------------------------|---------------------|
| | 1.400 A @ 230.0 V | Shaft Rotation: | Reversible |
| | 1.600 A @ 208.0 V | Shaft Slinger Indicator: | No Slinger |
| Design Code: | B | Speed Code: | Single Speed |
| Drip Cover: | No Drip Cover | Motor Standards: | NEMA |
| Duty Rating: | CONT | Starting Method: | Direct on line |
| Electrically Isolated Bearing: | Not Electrically Isolated | Thermal Device - Bearing: | None |
| Feedback Device: | NO FEEDBACK | Thermal Device - Winding: | None |
| Front Face Code: | Standard | Vibration Sensor Indicator: | No Vibration Sensor |
| Front Shaft Indicator: | None | Winding Thermal 1: | None |
| Heater Indicator: | No Heater | Winding Thermal 2: | None |

| Nameplate NP1256L | | | | | | | | | | | | |
|-------------------|--------------|--|--|--|--|------|------|--|----------------|-----|-------|---|
| CAT.NO. | NM3455 | | | | | | | | | | | |
| SPEC. | 34L51-5882 | | | | | | | | | | | |
| HP | .25 | | | | | | | | | | | |
| VOLTS | 230/460 | | | | | | | | | | | |
| AMP | 1.4/.7 | | | | | | | | | | | |
| RPM | 1140 | | | | | | | | | | | |
| FRAME | 48 | | | | | HZ | 60 | | | PH | 3 | |
| SER.F. | 1.35 | | | | | CODE | K | | DES | B | CLASS | F |
| NEMA-NOM-EFF | 68 | | | | | PF | 51 | | | | | |
| RATING | 40C AMB-CONT | | | | | | | | | | | |
| CC | | | | | | | | | USABLE AT 208V | 1.6 | | |
| DE | 6203 | | | | | ODE | 6203 | | | | | |
| ENCL | TENV | | | | | SN | | | | | | |
| | SFA 1.5/.75 | | | | | | | | | | | |

| Parts List | | |
|---------------|--|----------|
| Part Number | Description | Quantity |
| SA007934 | SA 34L51-5882 | 1.000 EA |
| RA004381 | RA 34L51-5882 | 1.000 EA |
| NS2512A01 | INSULATOR, CONDUIT BOX X | 1.000 EA |
| 34CB3002A | CB CAST W/.88 DIA HOLE | 1.000 EA |
| 34GS1029A01 | GASKET, CONDUIT BOX | 1.000 EA |
| 51XB1016A07 | 10-16 X 7/16 HXWSSLD SERTYB | 2.000 EA |
| 11XW1032G06 | 10-32 X .38, TAPTITE II, HEX WSHR SLTD U | 1.000 EA |
| 34EP3100A03SP | FR ENDPLATE, MACH | 1.000 EA |
| HW5100A03 | WAVY WASHER (W1543-017) | 1.000 EA |
| 34EP3102A02SP | FR/PU ENDPLATE, MACH | 1.000 EA |
| XY1032A02 | 10-32 HEX NUT DIRECTIONAL SERRATION | 4.000 EA |
| 34CB4517 | CB LID 4 MTG HOLES .22 DIA STAMPED, FOR | 1.000 EA |
| 34GS1031A01 | GASKET, FLAT CONDUIT BOX LID (LEXIDE) | 1.000 EA |
| 51XW0832A07 | 8-32 X .44, TAPTITE II, HEX WSHR SLTD SE | 4.000 EA |
| MG1000G27 | MED CHARCOAL METALLIC GREY 400-0096 | 0.014 GA |
| 85XU0407S04 | 4X1/4 U DRIVE PIN STAINLESS | 2.000 EA |
| HA3100A12 | THRUBOLT 10-32 X 7.375 | 4.000 EA |
| LC0005E01 | CONN.DIA./WARNING LABEL (LC0005/LB1119N) | 1.000 EA |
| NP1256L | ALUM UL CSA CC INDUSTRIAL MOTOR A60 | 1.000 EA |
| 35PA1066 | PKG GRP, PRINT PK1001A01 | 1.000 EA |

AC Induction Motor Performance Data

Record # 50804

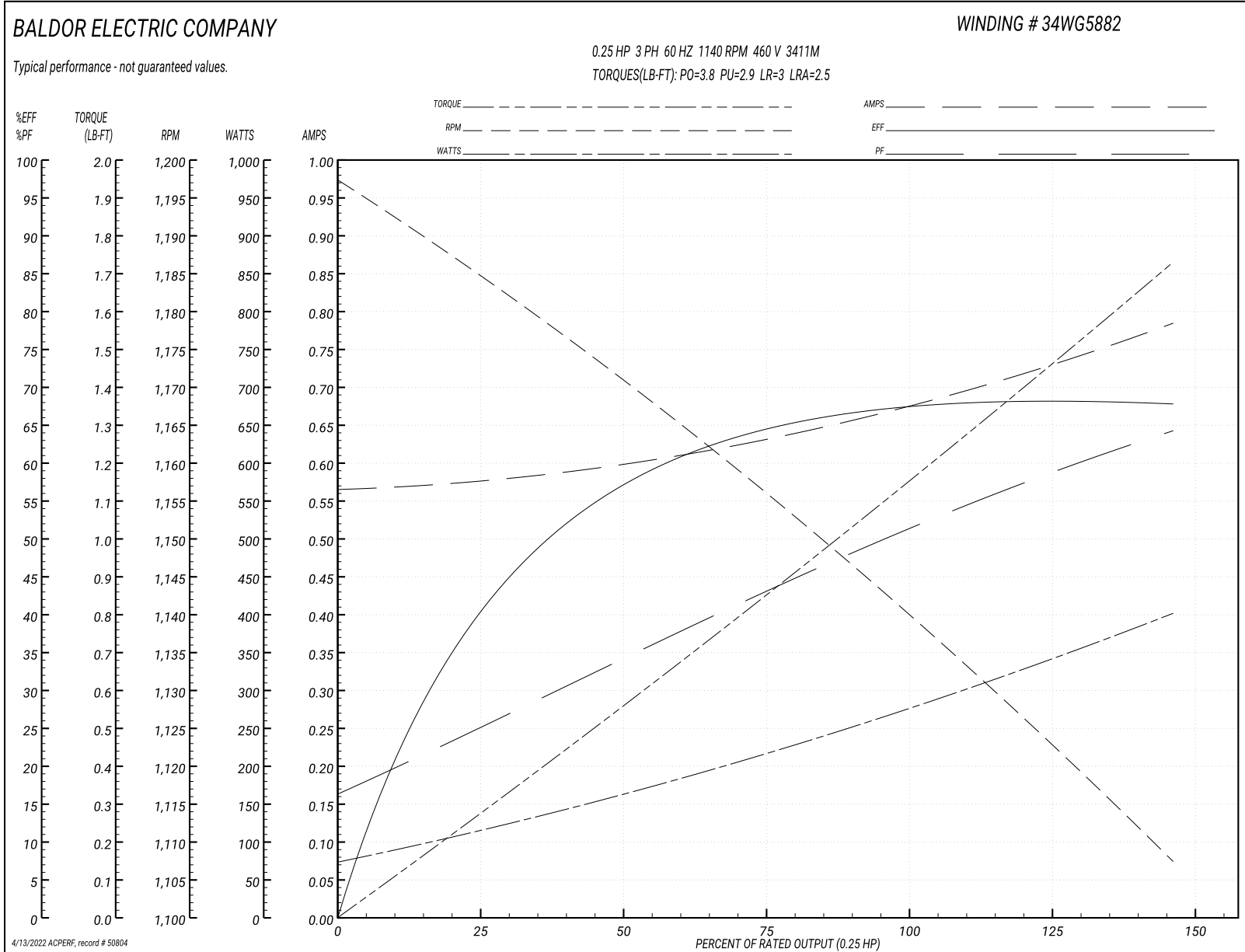
Typical performance - not guaranteed values

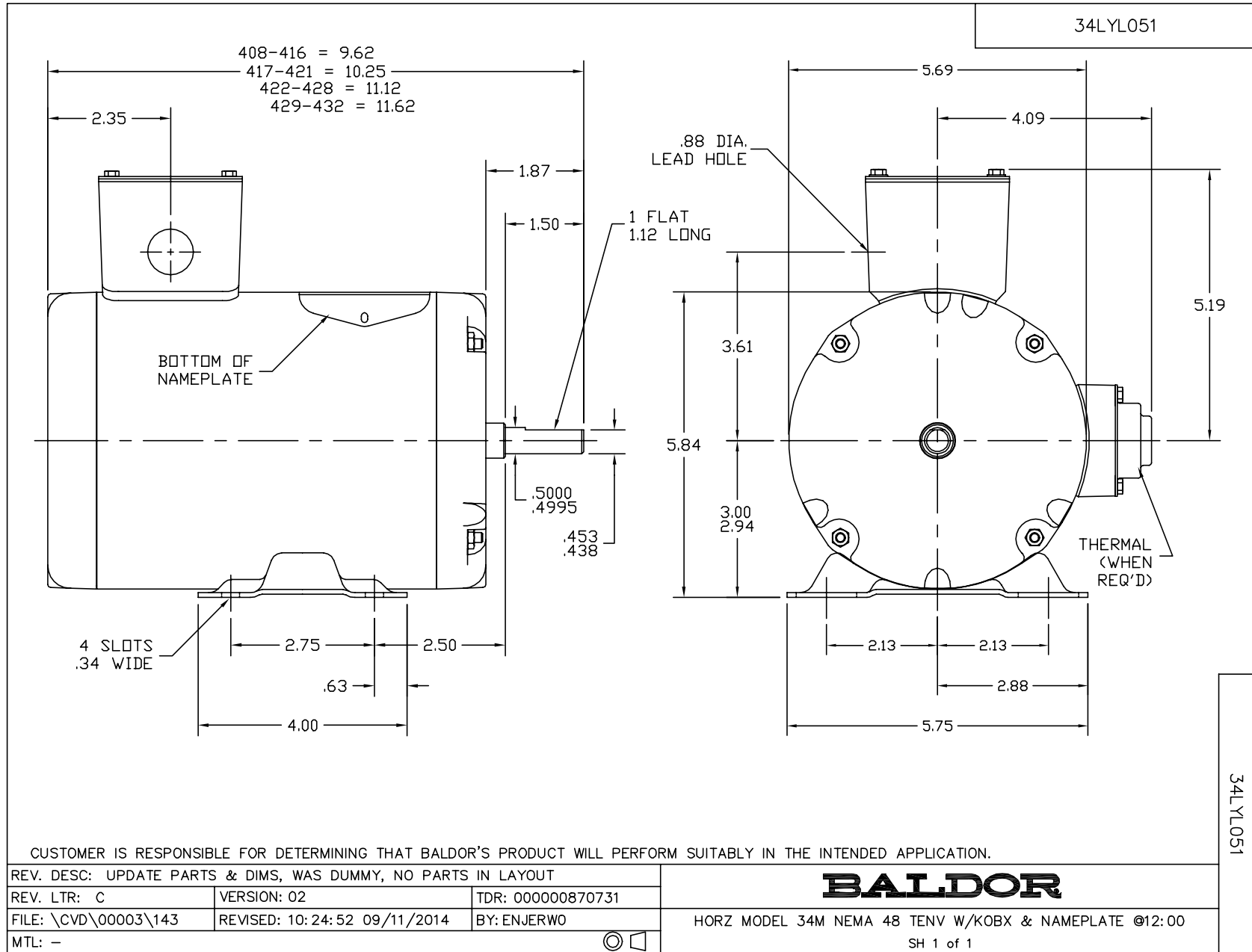
| Winding: 34WG5882-R006 | | | Type: 3411M | Enclosure: TENV | |
|------------------------|-----------------|----|--|---------------------------|--|
| Nameplate Data | | | 460 V, 60 Hz: High Voltage Connection | | |
| Rated Output (HP) | .25 | | Full Load Torque | 1.15 LB-FT | |
| Volts | 230/460 | | Start Configuration | direct on line | |
| Full Load Amps | 1.4/.7 | | Breakdown Torque | 3.8 LB-FT | |
| R.P.M. | 1140 | | Pull-up Torque | 2.9 LB-FT | |
| Hz | 60 Phase | 3 | Locked-rotor Torque | 3 LB-FT | |
| NEMA Design Code | B KVA Code | K | Starting Current | 2.5 A | |
| Service Factor (S.F.) | 1.35 | | No-load Current | 0.57 A | |
| NEMA Nom. Eff. | 68 Power Factor | 51 | Line-line Res. @ 25°C | 83 Ω | |
| Rating - Duty | 40C AMB-CONT | | Temp. Rise @ Rated Load | | |
| S.F. Amps | 1.5/.75 | | Temp. Rise @ S.F. Load | | |
| | | | Locked-rotor Power Factor | 68.8 | |
| | | | Rotor inertia | 0.0261 LB-FT ² | |

Load Characteristics 460 V, 60 Hz, 0.25 HP

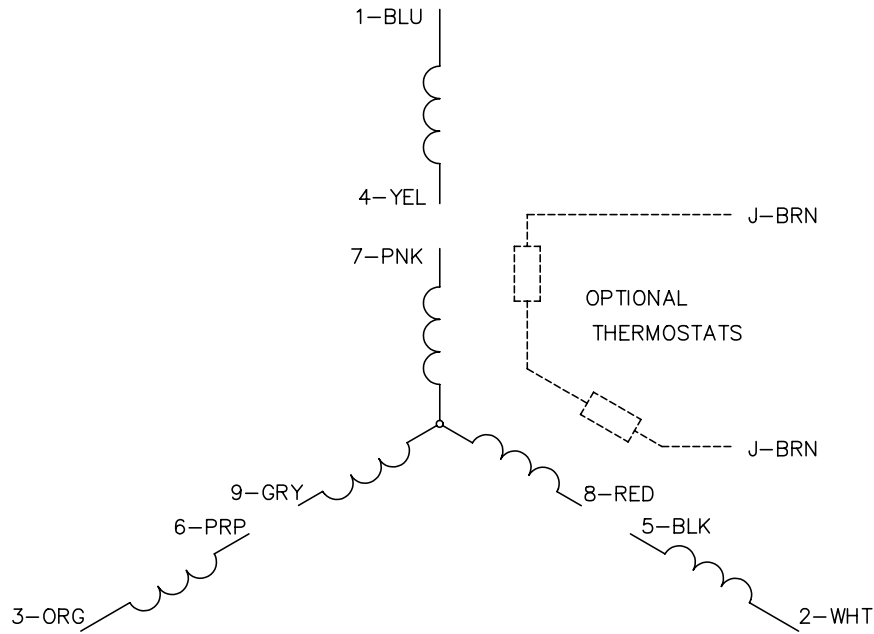
| % of Rated Load | 25 | 50 | 75 | 100 | 125 | 150 | S.F. |
|-----------------|------|------|------|------|------|------|------|
| Power Factor | 24 | 35 | 44 | 51 | 58 | 65 | 61 |
| Efficiency | 44 | 57 | 64.2 | 67.4 | 68.1 | 68 | 68.1 |
| Speed | 1184 | 1171 | 1157 | 1139 | 1122 | 1109 | 1117 |
| Line amperes | 0.57 | 0.6 | 0.63 | 0.68 | 0.73 | 0.78 | 0.75 |

Performance Graph at 460V, 60Hz, 0.25HP Typical performance - Not guaranteed values

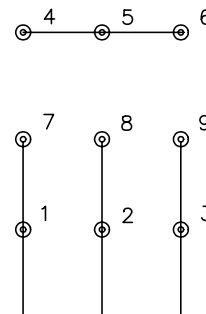




CD0005

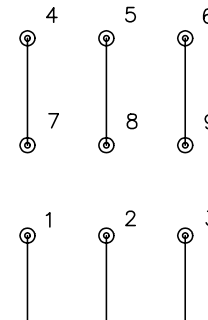


LOW VOLTAGE
(2Y)



LINE

HIGH VOLTAGE
(1Y)



LINE

NOTES:

1. INTERCHANGE ANY TWO LINE LEADS TO REVERSE ROTATION.
2. OPTIONAL THERMOSTATS ARE PROVIDED WHEN SPECIFIED.
3. ACTUAL NUMBER OF INTERNAL PARALLEL CIRCUITS MAY BE A MULTIPLE OF THOSE SHOWN ABOVE.
4. LEAD COLORS ARE OPTIONAL. LEADS MUST ALWAYS BE NUMBERED AS SHOWN.

| | | | |
|---|---------|-------------------------|--------------|
| REV. DESC: REVISE TO SHOW OPTIONAL COLORS | | | |
| REV. LTR: E | BY: JLP | REVISED: 01/19/99 10:15 | TDR: 0171435 |
| 900000 | | FILE: AAA00005140 | MDL: - |
| | | MTL: - | |

BALDOR ELECTRIC Co.

3PH, DV, 9 LEADS

CD0005