



GE INDUSTRIAL MOTORS
a **WOLONG** company

Product Technical Information

February 17, 2023

Data shown is for the current revision model #. Ensure your nameplate model # matches.

Model Number:	5KGS511SAA339
Catalog Number:	Q5364
Instruction Manual:	GEI-56128
Connection Diagram:	GEM2034E-FIG7
Outline Drawing:	239C6B00ABW

Accessory Connection Diagrams

Bearing Thermocouple:	None	Heater:	None
RTD:	None	Thermistor:	None
Thermostat:	None	Winding Thermocouple:	None
Bearing RTD:	None		

Table of Contents

Specification	01
Performance Characteristics	02
Outline Drawing	03
Connection Drawing(s)	04
Spare parts	05

Marks:

MODEL NUMBER:	5KGS511SAA339	Estimated Weight:	5626 Lbs
Outline Drawing:	239C6B00ABW	Time Rating:	CONT
Connection Diagram:	GEM2034E-FIG7	Enclosure:	TEFC
Instruction Book:	GEI-56128	Encl Construction:	SD
Design Code:	50BD3406A	Ambient Max(°C):	40
Type:	KGS	Alt Ambient Max(°C):	--
Frame:	5011LB	Insulation Class:	F
Phases:	3	NEMA Design:	B
Poles:	6	Nominal Efficiency:	95.8 %
Output Power:	250HP 185KW	Guaranteed Efficiency:	95.0 %
RPM:	1190	3/4 Load Efficiency:	--
Voltage:	460	KVA Code:	G
Hertz:	60	Max KVAR:	79.1
Amps - FL:	298.0	Power Factor:	82.0
Service Factor:	1.15	Bearing - DE:	NU 324
Alt Service Factor:	--	Bearing - ODE:	6320ZC3

Enclosure is Totally Enclosed Fan-Cooled

Stamped Nameplate Notes:

STAMP NP249A5564P075 AS BELOW:

MODEL:5KGS511SAA339

SN: XXX CSA CERTIFIED CSA.09.2216219

FOR CL I DIV2 GRP A,B,C,D T3 IN -25C<= TAMB<= 40C

1.0SF ON SINE-WAVE PWR OR ALTERNATE RATING

TEMP CODE --- AT --- SF ON SINE-WAVE PWR

OR T3 VT PWM CONTROL 1.0 SF 40 C AMB VT 0 - 60 HZ.

ROLLER BEARING - FOR BELTED LOAD ONLY

THERMOSTAT LEADS TB1-TB2: TRIP

MAX RADIAL LOAD: 8000 LBF AT 6.0"

FROM SHAFT SHOULDER

SUITABLE FOR 400V, 50HZ, 342 AMPS, 1.00SF



Additional Information:

6P - LB EXTN
C/BOX 1260 CU IN - 2(4.00" NPT)
C/B GRD PLATE
INPROSEAL ON DRIVE END
OIL RESISTANT SLEEVING ON LEADS
B5F4C4 HIGH STRENGTH STEEL AISI 4142 SHAFT MATERIAL
(3)N.C. CLASS F TRIP TSTAT - LDS TO MAIN CONDUIT BOX
NEMA TYPE GRD PAD
F1 MOUNTING
FEATURES OF MODEL 5KGS449SAA321D2
EXCEPT IN 5011 FRAME



Performance Characteristics

1st Winding 1st Connection

Design: 50BD3406A

Marks:

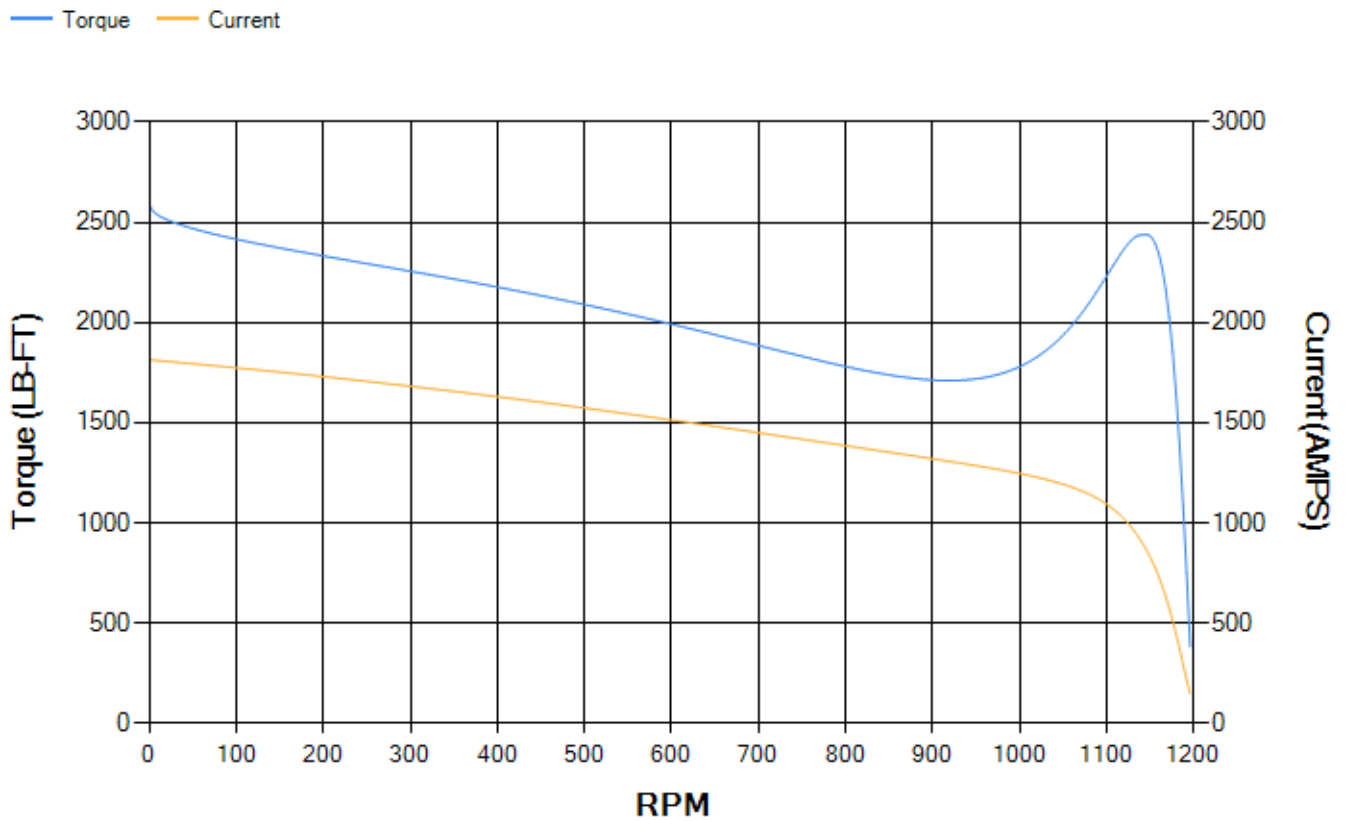
LOAD %	125.0	115.0	100.0	75.0	50.0	25.0	0.0
% EFF	95.23	95.45	95.93	95.95	95.65	93.51	0.00
% PF	82.86	82.68	81.86	78.3	69.36	47.58	3.21
AMPS	370.66	340.95	298.14	233.59	176.35	131.48	110.33

TORQ(FL)#FT	1104.96	TORQ(LR)%FL	234.01	TORQ(BD)%FL	220.43
AMPS(LR)	1813.87	PF AT START	0.38		

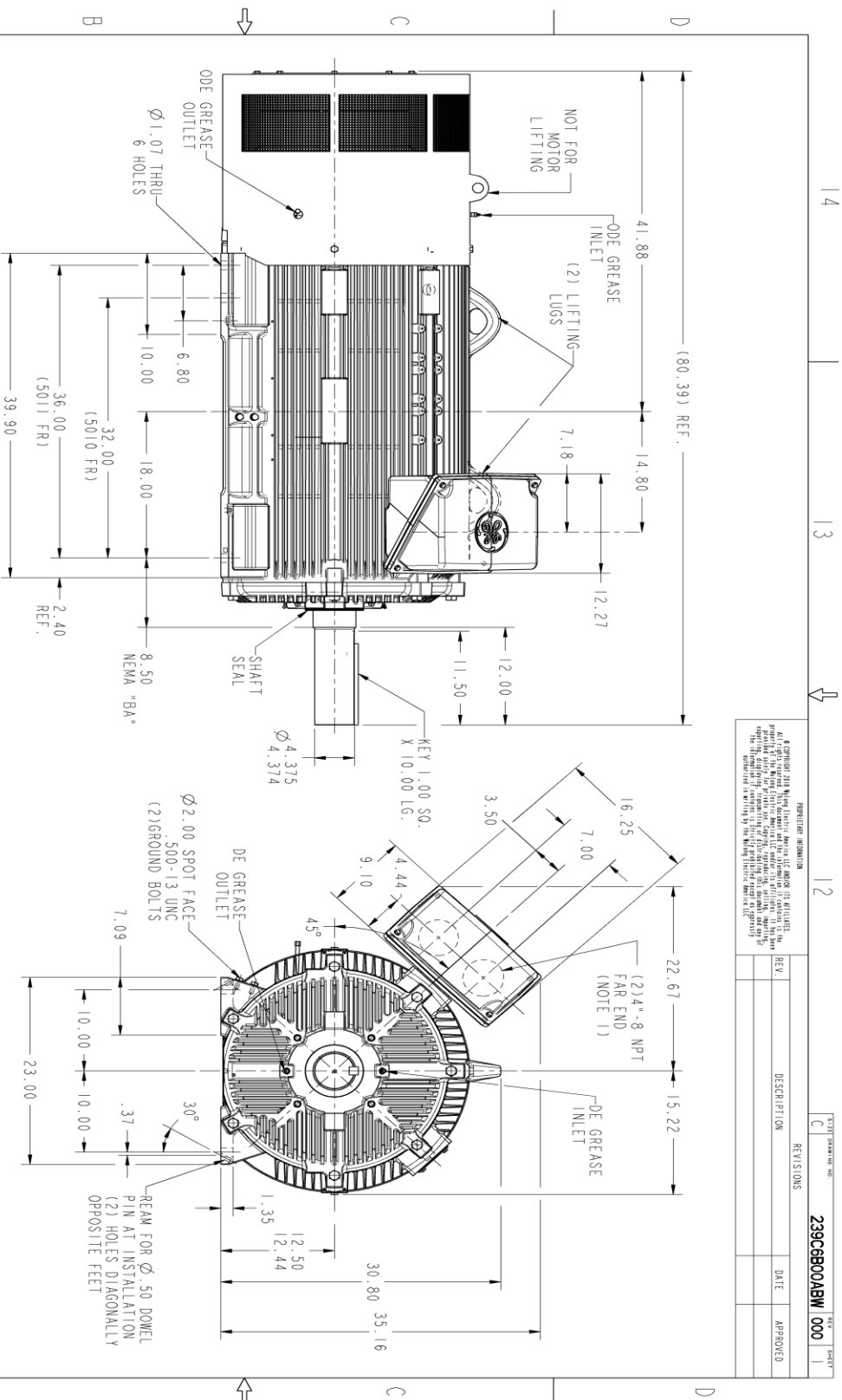
This motor is capable of two cold or one hot start with a maximum connected load inertia of 20418 Lb-Ft Sq (859.6 Kg-meter Sq)at 100% voltage, where the load torque varies with the square of the speed. Acceleration time with maximum inertia and the above load type is 47 seconds. Safe stall time at 100% voltage is 80 seconds cold, 56 seconds hot. Rotor inertia is 257.22 Lb-Ft Sq (10.83 Kg-meter Sq).

Open Circuit A-C:	0.688	Short Circuit D-C:	0.047
Short Circuit A-C:	0.038	X/R Ratio:	17.771
Stator Slots:	72	Rotor Slots:	58

Speed Torque Current Curve (First Connection, First Speed)



Marks:



REVISION INFORMATION ALL DIMENSIONS UNLESS OTHERWISE SPECIFIED ARE IN INCHES. DIMENSIONS IN PARENTHESES ARE IN MILLIMETERS. DIMENSIONS IN PARENTHESES ARE TO BE USED ONLY IN THE EVENT OF A DISCREPANCY BETWEEN THE INCH AND MILLIMETER DIMENSIONS. THE DIMENSIONS OF THIS DRAWING ARE THE PROPERTY OF GE AND WILL BE KEPT CONFIDENTIAL.			
REV.	DESCRIPTION	DATE	APPROVED

THIRD ANGLE PROJECTION

NOTES:

1. CONDUIT BOX MAY BE PLACED WITH THE ENTRANCE DOWN, UP OR ON EITHER SIDE.
2. F-I ASSEMBLY AS SHOWN.
3. ALL DIMENSIONS ARE IN INCHES.
4. TOLERANCE PERMISSIBLE ON SHAFT EXTENSION RUNOUT IS .0015" TIR FOR BALL BEARING/.002" TIR FOR ROLLER BEARING

SIGNATURES	DATE
MODEL: ALMY 04/28/22	
REVISED: ALMY 04/28/22	
DRAWN: HARRINGTON 04/28/22	
QUALITY: ALMY 04/28/22	

GE INDUSTRIAL MOTORS
a WOLKONG company

OUTLINE
QUANTUM 5010/5011 LB. TEFC
1260 CU IN C/BOX

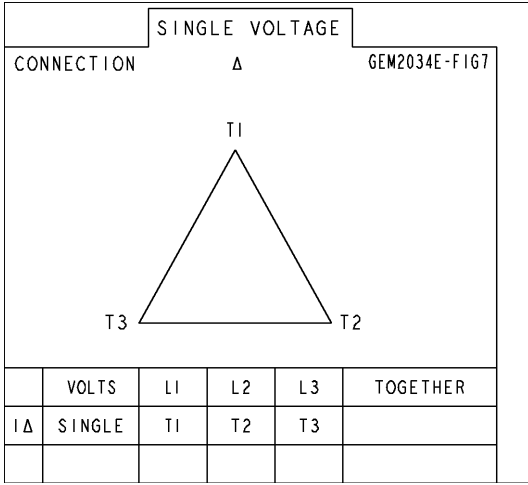
239C6B00ABW
REV. 000

SCALE: 0.125 REF. NO: 239C6B00EN SHEET 1 OF 1

14 13 12 11

Marks:

Connection Diagram
GEM2034E-FIG7



End shield Assembly		
Part Description	DE Side Part#	ODE Side Part#
End Shield	115E5204AA1	115E5202AA1
Bearing	235A2548AA01	235A2523AF03
Slinger/Inproseal	235A4575GS10	149C4399G11

Fan & Fan Cover Assembly	
Part Description	Part#
Fan	
Fan Cover	119D3661G01

Conduit & Accessories Box Assembly	
Part Description	Part#
Conduit Box	179B9058G03

Mechanical Accessories	
Part Description	Part#
Brake	
Tachometer	

