



Saturday, April 30, 2022

Technical Data Center
3050 post Oak Blvd.,
Suite 630, Houston,
TX 77056
Phone: +1 877-450-6026

Customer: **GE INDUSTRIAL SOLUTIONS**
WARRANTY PO BOX 2205
FORT WAYNE - IN 46801

PRINTS FOR APPROVAL PACKAGE

Return 'For Approval' prints to the GE Field Sales Engineer or Customer Care Contact. The order is on hold until prints are approved and returned. When approved prints are received by GE, current leadtimes will apply.

Approved by: _____ Date: _____

Inside Sales Representative:	Technical Data Center	Alternate Phone:	260-439-2000
Inside Sales Rep Phone:		Customer Order: No:	DUMMY
Model Number:	5KGS511SAA338	Customer Item No:	
Sales Order No:	2000007403	Customer Part No:	NOCAT500HL
Order Line No:	3	Outline Drawing:	239C6B00ZA
Instruction Manual:	GEI-56128		
Connection Diagram:	GEM2034E-FIG20		

Accessory Connection Diagrams

Bearing Thermocouple:	None	Heater:	None
RTD:	None	Thermistor:	None
Thermostat:	None	Winding Thermocouple:	None
Bearing RTD:	None		

Revision History

<u>Version</u>	<u>Date</u>	<u>Comments</u>
v22047665.01	04-30-2022	Original Version

Distribution Information

<u>Quantity</u>	<u>Recipient</u>	<u>Quantity</u>	<u>Recipient</u>
1	rob.amstutz@geim.wolong.com ROB.AMSTUTZ@GEIM.WOLONG.COM E-Mail Distribution	1	geim.engapps@geim.wolong.com GEIM.ENGAPPS@GEIM.WOLONG.COM E-Mail Distribution
1	raghunath.nagaraja@geim.wolong.com RAGHUNATH.NAGARAJA@GEIM.WOLONG.COM E-Mail Distribution		



Saturday, April 30, 2022

Technical Data Center
3050 post Oak Blvd.,
Suite 630, Houston,
TX 77056
Phone: +1 877-450-6026

Customer: **GE INDUSTRIAL SOLUTIONS**
WARRANTY PO BOX 2205
FORT WAYNE - IN 46801

PRINTS FOR APPROVAL PACKAGE

Return 'For Approval' prints to the GE Field Sales Engineer or Customer Care Contact. The order is on hold until prints are approved and returned. When approved prints are received by GE, current leadtimes will apply.

Approved by: _____ Date: _____

Customer Order / Item:	DUMMY	Sales Order No:	2000007403
Customer Part:	NOCAT500HL	Order Line No:	3

<u>MODEL NUMBER:</u>	5KGS511SAA338	Estimated Weight:	5800 Lbs
Outline Drawing:	239C6B00ZA	Service Factor:	1.15
Connection Diagram:	GEM2034E-FIG20	Time Rating:	CONT
Instruction Book:	GEI-56128	Enclosure:	TEFC
Design Code:	50BD3403A	Encl Construction:	SD
Type:	KGS	Ambient Max(°C):	40
Frame:	5011LB	Insulation Class:	F
Phases:	3	NEMA Design:	B
Poles:	6	Nominal Efficiency:	95.8%
Output Power:	350HP 261KW	KVA Code:	G
RPM:	1190	Max KVAR:	116.5
Voltage:	460	Power Factor:	81.5
Hertz:	60	Bearing - DE:	NU 324
Amps - FL:	420.0	Bearing - ODE:	6320ZC3

Enclosure is Totally Enclosed Fan-Cooled

Stamped Nameplate Notes:

STAMP NP249A5564P075 AS BELOW:
MODEL:5KGS511SAA338
SN: XXX CSA CERTIFIED CSA.09.2216219
FOR CL I DIV2 GRP A,B,C,D T3 IN -25C<= TAMB<= 40C
1.0SF ON SINE-WAVE PWR OR ALTERNATE RATING
TEMP CODE - AT - SF ON SINE-WAVE PWR
OR T3 VT PWM CONTROL 1.0 SF 40 C AMB VT 0-60 HZ.
ROLLER BEARING - FOR BELTED LOAD ONLY
THERMOSTAT LEADS TB1-TB2: TRIP
MAX RADIAL LOAD: 8000 LBF AT 6.0"
FROM SHAFT SHOULDER
400V, 50HZ 480.0 AMPS AT 1.0SF



GE INDUSTRIAL MOTORS
a **WOLONG** company

Saturday, April 30, 2022

Technical Data Center
3050 post Oak Blvd.,
Suite 630, Houston,
TX 77056
Phone: +1 877-450-6026

Customer: **GE INDUSTRIAL SOLUTIONS**
WARRANTY PO BOX 2205
FORT WAYNE - IN 46801

PRINTS FOR APPROVAL PACKAGE

Return 'For Approval' prints to the GE Field Sales Engineer or Customer Care Contact. The order is on hold until prints are approved and returned. When approved prints are received by GE, current leadtimes will apply.

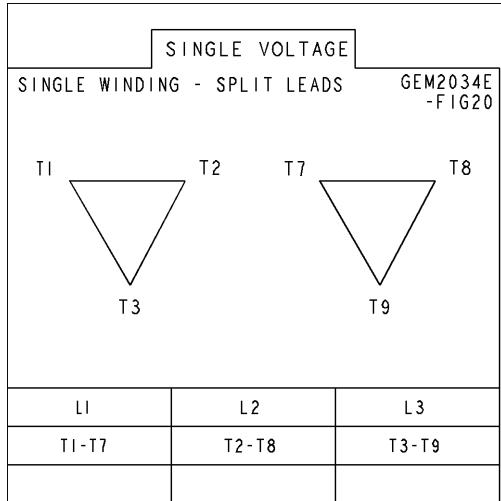
Approved by: _____ Date: _____

Additional Information:

6P - LB EXTN - SPLIT LEAD
C/BOX 2500 CU IN - 2(4.00" NPT)
C/B GRD PLATE
INPROSEAL ON DRIVE END
OIL RESISTANT SLEEVING ON LEADS
B5F4C4 HIGH STRENGTH STEEL AISI 4142 SHAFT MATERIAL
(3)N.C. CLASS F TRIP TSTAT - LDS TO MAIN CONDUIT BOX
NEMA TYPE GRD PAD
F1 MOUNTING
FEATURES OF MODEL 5KGS449SAA321D2
EXCEPT IN 5011 FRAME

Diagrams for Model: 5KGS511SAA338

Connection Diagram
GEM2034E-FIG20



Performance Characteristics

1st Winding 1st Connection

Design: 50BD3403A

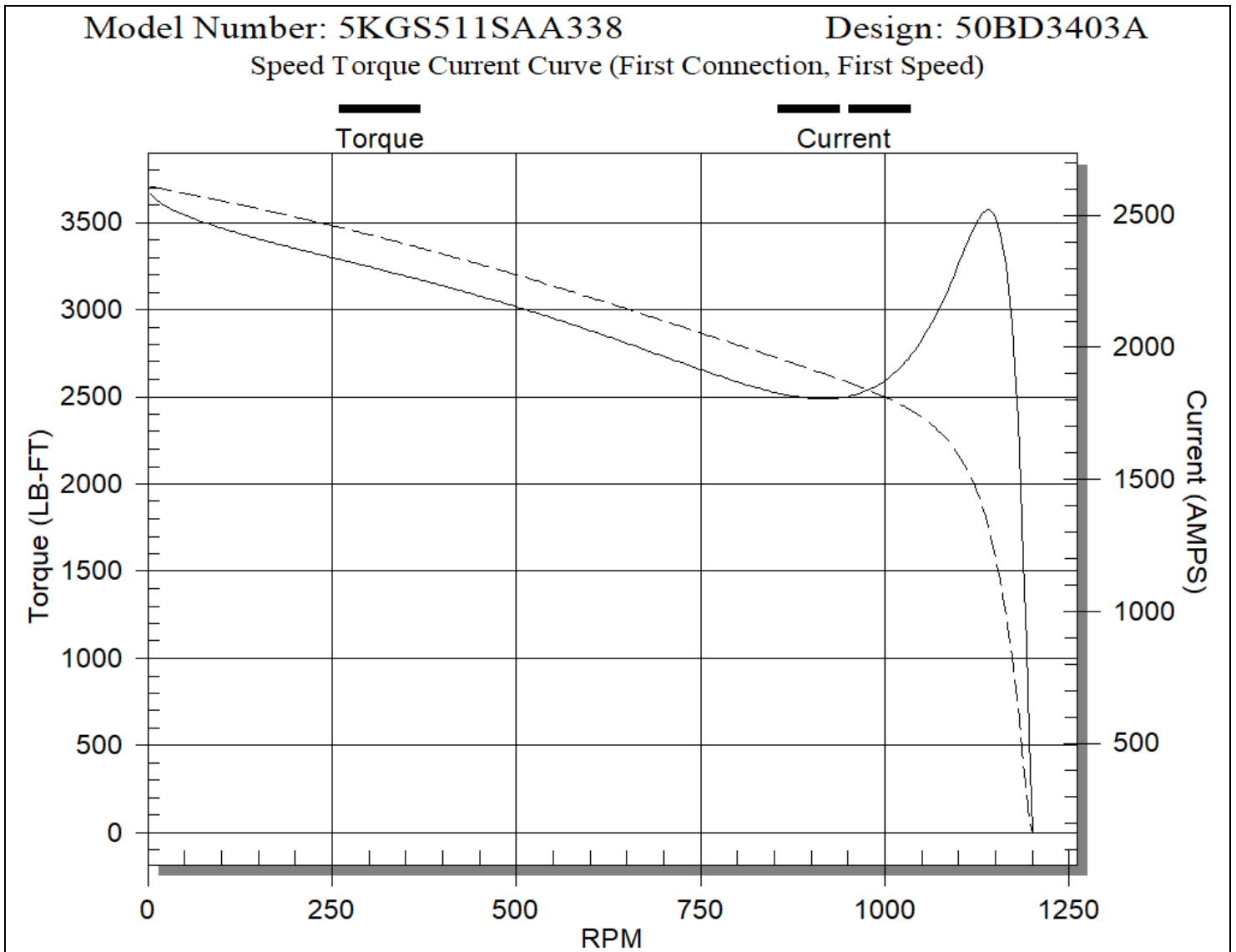
LOAD %	125.0	115.0	100.0	75.0	50.0	25.0	0.0
% EFF	95.24	95.47	95.80	96.02	95.79	93.81	0.00
% PF	82.58	82.31	81.50	77.41	67.96	45.83	2.86
AMPS	520.64	479.41	420.00	330.54	251.60	190.51	162.45

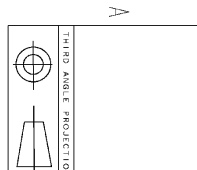
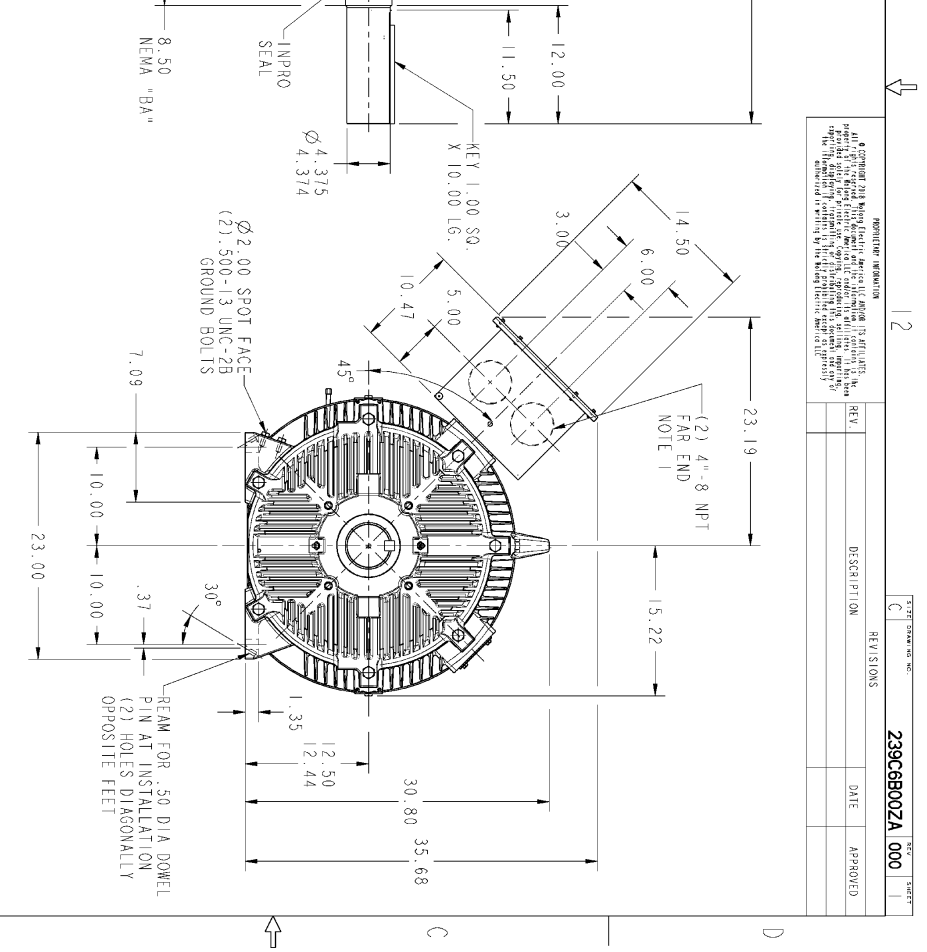
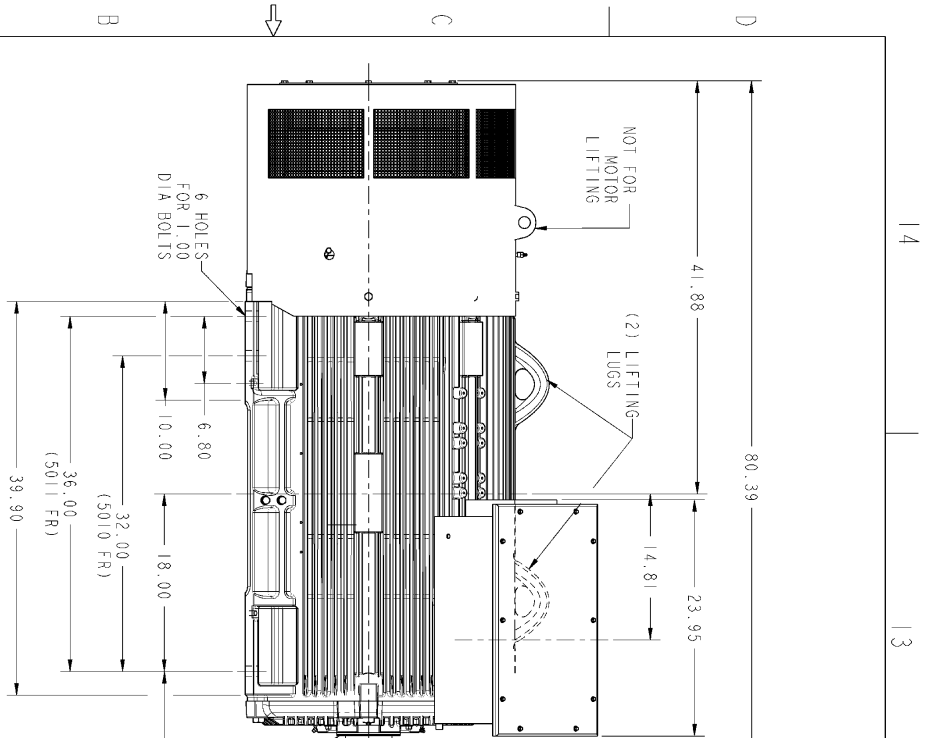
TORQ(FL)#FT 1547.18 TORQ(LR)%FL 239.71 TORQ(BD)%FL 230.50
 AMPS(LR) 2611.30 PF AT START 0.38

This motor is capable of two cold or one hot start with a maximum connected load inertia of 19923.0 Lb-Ft Sq (839.6 Kg-meter Sq) at 100% voltage, where the load torque varies with the square of the speed. Acceleration time with maximum inertia and the above load type is 32 seconds. Safe stall time at 100% voltage is 60 seconds cold, 38 seconds hot. Rotor inertia is 274.37 Lb-Ft Sq (11.562 Kg-meter Sq).

Open Circuit A-C: 0.643
 Short Circuit A-C: 0.036
 Stator Slots: 72

Short Circuit D-C: 0.044
 X/R Ratio: 16.417
 Rotor Slots: 58





NOTES:

1. CONDUIT BOX MAY BE PLACED WITH THE ENTRANCE DOWN, UP OR ON EITHER SIDE.
2. F-I ASSEMBLY AS SHOWN.
3. ALL DIMENSIONS ARE IN INCHES.

SIGNATURES	DATE
MODEL SHIMAKI 12/26/19	12/26/19
DRAWN SHIMAKI 12/26/19	12/26/19
CHECKED RABHO 12/26/19	12/26/19
ENGRD SANCOSI 12/26/19	12/26/19
W/E
QUALITY
ISSUED SHIMAKI 12/26/19	12/26/19

 GE INDUSTRIAL MOTORS a WOODWARD company	TITLE OUTLINE QUANTUM 5010/5011 LB, TEFC 2500 CU IN C/BOX
	SIZE DRAWING 239C6B00ZA 000
SCALE 0:125	REF. NO. 239C6B00ZA
SHEET 1 OF 1	SHEET 1 OF 1

NOT FOR LIFTING INFORMATION

THIS DOCUMENT IS THE PROPERTY OF GENERAL ELECTRIC COMPANY AND IS LOANED TO YOU BY THE COMPANY. IT IS TO BE USED ONLY FOR THE PURPOSES AND UNDER THE CONDITIONS SPECIFICALLY STATED BY THE COMPANY. IT IS NOT TO BE REPRODUCED OR TRANSMITTED IN ANY FORM OR BY ANY MEANS, ELECTRONIC OR MECHANICAL, INCLUDING PHOTOCOPYING, RECORDING, OR BY ANY INFORMATION STORAGE AND RETRIEVAL SYSTEM, WITHOUT THE EXPRESS WRITTEN PERMISSION OF GENERAL ELECTRIC COMPANY.

REV.	DATE	APPROVED
C		

SHEET NUMBER NO.	REV	DESCRIPTION	DATE	APPROVED
239C6B00ZA	000			