



GE INDUSTRIAL MOTORS
a **WOLONG** company

Saturday, April 30, 2022

Technical Data Center
3050 post Oak Blvd.,
Suite 630, Houston,
TX 77056
Phone: +1 877-450-6026

Customer: **GE INDUSTRIAL SOLUTIONS**
WARRANTY PO BOX 2205
FORT WAYNE - IN 46801

PRINTS FOR APPROVAL PACKAGE

Return 'For Approval' prints to the GE Field Sales Engineer or Customer Care Contact. The order is on hold until prints are approved and returned. When approved prints are received by GE, current leadtimes will apply.

Approved by: _____ Date: _____

Inside Sales Representative: Technical Data Center
Inside Sales Rep Phone:
Model Number: 5KGS511SAA336
Sales Order No: 2000007403
Order Line No: 4
Instruction Manual: GEI-56128
Connection Diagram: GEM2034E-FIG20

Alternate Phone: 260-439-2000
Customer Order No: DUMMY
Customer Item No:
Customer Part No: NOCAT500HL
Outline Drawing: 239C6B00ZA

Accessory Connection Diagrams

Bearing Thermocouple: None
RTD: None
Thermostat: None
Bearing RTD: None

Heater: None
Thermistor: None
Winding Thermocouple: None

Revision History

<u>Version</u>	<u>Date</u>	<u>Comments</u>
v22047677.01	04-30-2022	Original Version

Distribution Information

<u>Quantity</u>	<u>Recipient</u>
1	rob.amstutz@geim.wolong.com ROB.AMSTUTZ@GEIM.WOLONG.COM E-Mail Distribution

<u>Quantity</u>	<u>Recipient</u>
1	geim.engapps@geim.wolong.com GEIM.ENGAPPS@GEIM.WOLONG.COM E-Mail Distribution

1	raghunath.nagaraja@geim.wolong.com RAGHUNATH.NAGARAJA@GEIM.WOLONG.COM .COM E-Mail Distribution
---	---



Saturday, April 30, 2022

Technical Data Center
3050 post Oak Blvd.,
Suite 630, Houston,
TX 77056
Phone: +1 877-450-6026

Customer: **GE INDUSTRIAL SOLUTIONS**
WARRANTY PO BOX 2205
FORT WAYNE - IN 46801

PRINTS FOR APPROVAL PACKAGE

Return 'For Approval' prints to the GE Field Sales Engineer or Customer Care Contact. The order is on hold until prints are approved and returned. When approved prints are received by GE, current leadtimes will apply.

Approved by: _____ Date: _____

Customer Order / Item:	DUMMY	Sales Order No:	2000007403
Customer Part:	NOCAT500HL	Order Line No:	4

<u>MODEL NUMBER:</u>	5KGS511SAA336	Estimated Weight:	5800 Lbs
Outline Drawing:	239C6B00ZA	Service Factor:	1.15
Connection Diagram:	GEM2034E-FIG20	Time Rating:	CONT
Instruction Book:	GEI-56128	Enclosure:	TEFC
Design Code:	50BD3079A	Encl Construction:	SD
Type:	KGS	Ambient Max(°C):	40
Frame:	5011LB	Insulation Class:	F
Phases:	3	NEMA Design:	--
Poles:	6	Nominal Efficiency:	95.0%
Output Power:	400HP 298.3KW	KVA Code:	G
RPM:	1185	Max KVAR:	126.8
Voltage:	460	Power Factor:	82.0
Hertz:	60	Bearing - DE:	NU 324
Amps - FL:	481.0	Bearing - ODE:	6320ZC3

Enclosure is Totally Enclosed Fan-Cooled

Stamped Nameplate Notes:

STAMP NP249A5564P075 AS BELOW:
MODEL:5KGS511SAA336
SN: XXX CSA CERTIFIED CSA.09.2216219
FOR CL I DIV2 GRP A,B,C,D T3 IN -25C<= TAMB<= 40C
1.0SF ON SINE-WAVE PWR OR ALTERNATE RATING
TEMP CODE -- AT --- SF ON SINE-WAVE PWR
OR T3 VT PWM CONTROL 1.0 SF 40 C AMB VT 0-60 HZ.
ROLLER BEARING - FOR BELTED LOAD ONLY
THERMOSTAT LEADS TB1-TB2: TRIP
MAX RADIAL LOAD: 7500 LBF AT 6.0"
FROM SHAFT SHOULDER
400V, 50HZ 549 AMPS AT 1.0SF



GE INDUSTRIAL MOTORS
a **WOLONG** company

Saturday, April 30, 2022

Technical Data Center
3050 post Oak Blvd.,
Suite 630, Houston,
TX 77056
Phone: +1 877-450-6026

Customer: **GE INDUSTRIAL SOLUTIONS**
WARRANTY PO BOX 2205
FORT WAYNE - IN 46801

PRINTS FOR APPROVAL PACKAGE

Return 'For Approval' prints to the GE Field Sales Engineer or Customer Care Contact. The order is on hold until prints are approved and returned. When approved prints are received by GE, current leadtimes will apply.

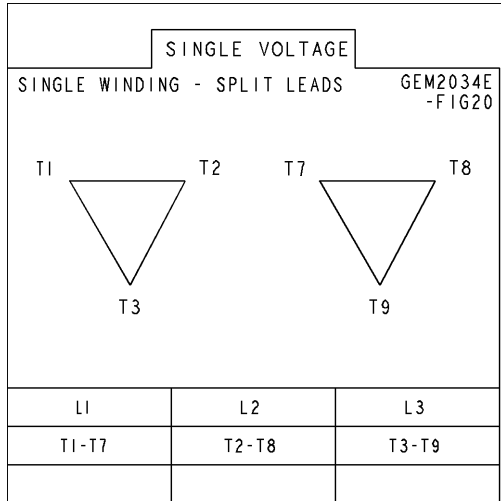
Approved by: _____ Date: _____

Additional Information:

6P - LB EXTN - SPLIT LEAD
C/BOX 2500 CU IN - 2(4.00" NPT)
C/B GRD PLATE
INPROSEAL ON DRIVE END
OIL RESISTANT SLEEVING ON LEADS
B5F4C4 HIGH STRENGTH STEEL AISI 4142 SHAFT MATERIAL
(3)N.C. CLASS F TRIP TSTAT - LDS TO MAIN CONDUIT BOX
NEMA TYPE GRD PAD
F1 MOUNTING
FEATURES OF MODEL 5KGS449SAA321D2
EXCEPT IN 5011 FRAME

Diagrams for Model: 5KGS511SAA336

Connection Diagram
GEM2034E-FIG20



Performance Characteristics

1st Winding 1st Connection

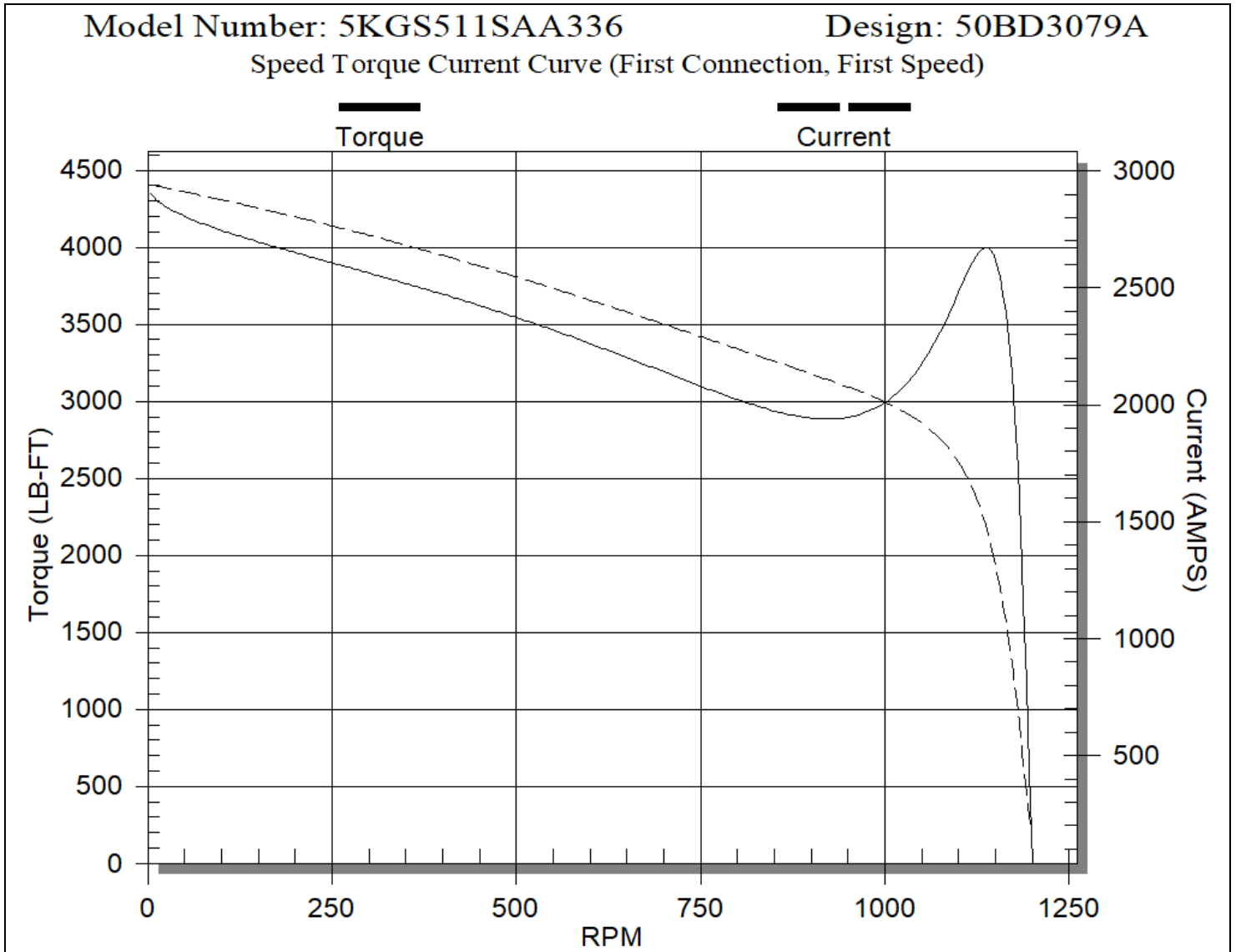
Design: 50BD3079A

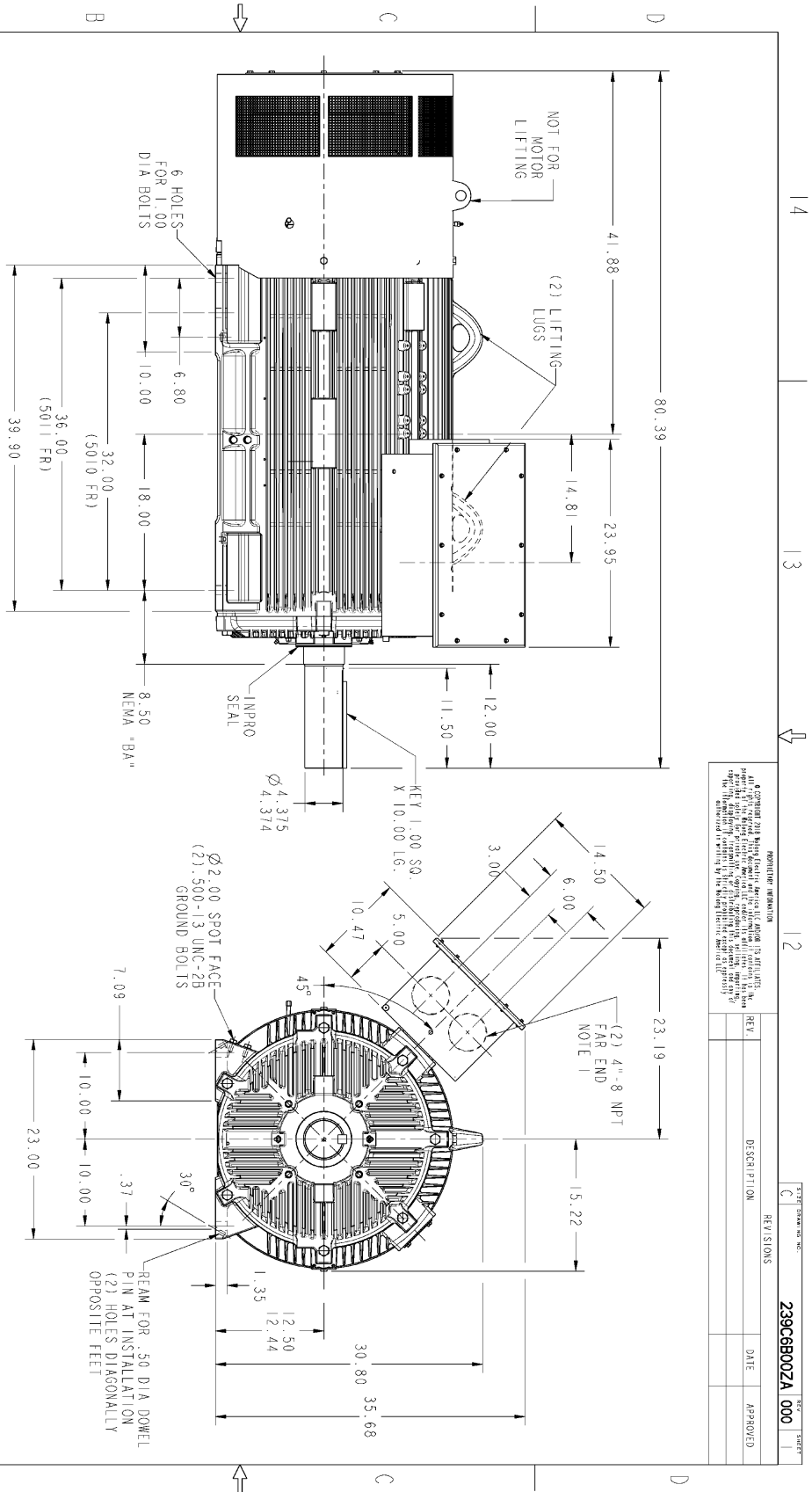
LOAD %	125.0	115.0	100.0	75.0	50.0	25.0	0.0
% EFF	95.00	95.28	95.00	95.99	95.87	94.11	0.00
% PF	82.94	82.78	82.00	78.42	69.42	47.41	2.78
AMPS	593.94	545.90	481.00	373.01	281.26	209.77	176.86

TORQ(FL)#FT 1770.39 **TORQ(LR)%FL** 248.48 **TORQ(BD)%FL** 225.50
AMPS(LR) 2942.82 **PF AT START** 0.40

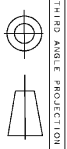
This motor is capable of two cold or one hot start with a maximum connected load inertia of 17357.0 Lb-Ft Sq (731.4 Kg-meter Sq) at 100% voltage, where the load torque varies with the square of the speed. Acceleration time with maximum inertia and the above load type is 23 seconds. Safe stall time at 100% voltage is 50 seconds cold, 28 seconds hot. Rotor inertia is 274.37 Lb-Ft Sq (11.562 Kg-meter Sq).

Open Circuit A-C: 0.605 **Short Circuit D-C:** 0.040
Short Circuit A-C: 0.032 **X/R Ratio:** 14.952
Stator Slots: 72 **Rotor Slots:** 58





- NOTES:
1. CONDUIT BOX MAY BE PLACED WITH THE ENTRANCE DOWN, UP OR ON EITHER SIDE.
 2. F-I ASSEMBLY AS SHOWN.
 3. ALL DIMENSIONS ARE IN INCHES.



REVISIONS

REV	DATE	APPROVED
C		

DESCRIPTION

DATE

APPROVED

239C6B00ZA 000

SIGNATURES	DATE
MODEL SHINJIAK 12/26/19	
RETAIL SHINJIAK 12/26/19	
CHECKS RABDI 12/26/19	
ENGRG SANTSCHI 12/26/19	
WFL	
QUALITY	
ISSUED SHINJIAK 12/26/19	

SCALE: 9:125

REF. NO.: 239C6B00ZA

SHEET 1 OF 1

GE INDUSTRIAL MOTORS
a WOODWARD company

OUTLINE
QUANTUM 5010/5011 LB, TEFC
2500 CU IN C/BOX

239C6B00ZA

REV