



**GE INDUSTRIAL MOTORS**  
a **WOLONG** company

Saturday, April 30, 2022

Technical Data Center  
3050 post Oak Blvd.,  
Suite 630, Houston,  
TX 77056  
Phone: +1 877-450-6026

Customer: **GE INDUSTRIAL SOLUTIONS**  
WARRANTY PO BOX 2205  
FORT WAYNE - IN 46801

**PRINTS FOR APPROVAL PACKAGE**

Return 'For Approval' prints to the GE Field Sales Engineer or Customer Care Contact. The order is on hold until prints are approved and returned. When approved prints are received by GE, current leadtimes will apply.

Approved by: \_\_\_\_\_ Date: \_\_\_\_\_

**Inside Sales Representative:** Technical Data Center  
**Inside Sales Rep Phone:**  
**Model Number:** 5KGS511SAA224  
**Sales Order No:** 2000007403  
**Order Line No:** 9  
**Instruction Manual:** GEI-56128  
**Connection Diagram:** GEM2034E-FIG20

**Alternate Phone:** 260-439-2000  
**Customer Order No:** DUMMY  
**Customer Item No:**  
**Customer Part No:** NOCAT500HL  
**Outline Drawing:** 239C6B00ZA

**Accessory Connection Diagrams**

**Bearing Thermocouple:** None  
**RTD:** None  
**Thermostat:** None  
**Bearing RTD:** None

**Heater:** None  
**Thermistor:** None  
**Winding Thermocouple:** None

**Revision History**

<u>Version</u>	<u>Date</u>	<u>Comments</u>
v22047672.01	04-30-2022	Original Version

**Distribution Information**

<u>Quantity</u>	<u>Recipient</u>	<u>Quantity</u>	<u>Recipient</u>
1	rob.amstutz@geim.wolong.com ROB.AMSTUTZ@GEIM.WOLONG.COM E-Mail Distribution	1	geim.engapps@geim.wolong.com GEIM.ENGAPPS@GEIM.WOLONG.COM E-Mail Distribution
1	raghunath.nagaraja@geim.wolong.com RAGHUNATH.NAGARAJA@GEIM.WOLONG.COM .COM E-Mail Distribution		



Saturday, April 30, 2022

Technical Data Center  
3050 post Oak Blvd.,  
Suite 630, Houston,  
TX 77056  
Phone: +1 877-450-6026

Customer: **GE INDUSTRIAL SOLUTIONS**  
WARRANTY PO BOX 2205  
FORT WAYNE - IN 46801

**PRINTS FOR APPROVAL PACKAGE**

Return 'For Approval' prints to the GE Field Sales Engineer or Customer Care Contact. The order is on hold until prints are approved and returned. When approved prints are received by GE, current leadtimes will apply.

Approved by: \_\_\_\_\_ Date: \_\_\_\_\_

<b>Customer Order / Item:</b>	DUMMY	<b>Sales Order No:</b>	2000007403
<b>Customer Part:</b>	NOCAT500HL	<b>Order Line No:</b>	9

<b><u>MODEL NUMBER:</u></b>	<b>5KGS511SAA224</b>	<b>Estimated Weight:</b>	5684 Lbs
<b>Outline Drawing:</b>	239C6B00ZA	<b>Service Factor:</b>	1.15
<b>Connection Diagram:</b>	GEM2034E-FIG20	<b>Time Rating:</b>	CONT
<b>Instruction Book:</b>	GEI-56128	<b>Enclosure:</b>	TEFC
<b>Design Code:</b>	50BD1648A	<b>Encl Construction:</b>	SD
<b>Type:</b>	KGS	<b>Ambient Max(°C):</b>	40
<b>Frame:</b>	5011LB	<b>Insulation Class:</b>	F
<b>Phases:</b>	3	<b>NEMA Design:</b>	B
<b>Poles:</b>	4	<b>Nominal Efficiency:</b>	96.2%
<b>Output Power:</b>	500HP 372.8KW	<b>KVA Code:</b>	G
<b>RPM:</b>	1785	<b>Max KVAR:</b>	148.1
<b>Voltage:</b>	460	<b>Power Factor:</b>	85.0
<b>Hertz:</b>	60	<b>Bearing - DE:</b>	NU 324
<b>Amps - FL:</b>	572.0	<b>Bearing - ODE:</b>	6320ZC3

**Enclosure is Totally Enclosed Fan-Cooled**

**Stamped Nameplate Notes:**

STAMP NP249A5564P075 AS BELOW:  
MODEL:5KGS511SAA224  
SN: XXX CSA CERTIFIED CSA.09.2216219  
FOR CL I DIV2 GRP A,B,C,D T3 IN -25C<= TAMB<= 40C  
1.0SF ON SINE-WAVE PWR OR ALTERNATE RATING  
TEMP CODE --- AT --- SF ON SINE-WAVE PWR  
OR T3 VT PWM CONTROL 1.0 SF 40 C AMB VT 0-60 HZ.  
ROLLER BEARING - FOR BELTED LOAD ONLY  
THERMOSTAT LEADS TB1-TB2: TRIP  
MAX RADIAL LOAD: 8000 LBF AT 6.0"  
FROM SHAFT SHOULDER  
400V, 50HZ 654 AMPS AT 1.0SF



**GE INDUSTRIAL MOTORS**  
a **WOLONG** company

**Saturday, April 30, 2022**

Technical Data Center  
3050 post Oak Blvd.,  
Suite 630, Houston,  
TX 77056  
Phone: +1 877-450-6026

Customer: **GE INDUSTRIAL SOLUTIONS**  
**WARRANTY PO BOX 2205**  
**FORT WAYNE - IN 46801**

## **PRINTS FOR APPROVAL PACKAGE**

Return 'For Approval' prints to the GE Field Sales Engineer or Customer Care Contact. The order is on hold until prints are approved and returned. When approved prints are received by GE, current leadtimes will apply.

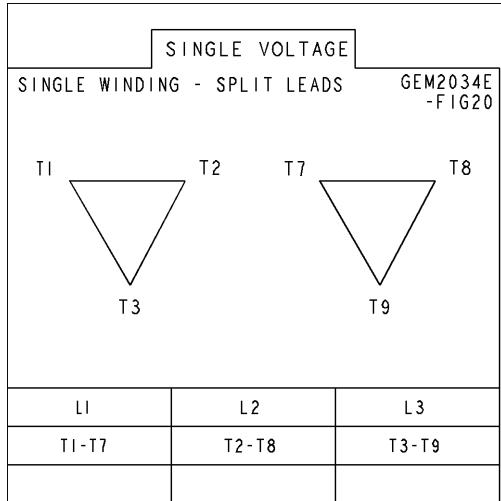
Approved by: \_\_\_\_\_ Date: \_\_\_\_\_

### **Additional Information:**

4P - LB EXTN - SPLIT LEAD  
C/BOX 2500 CU IN - 2(4.00" NPT)  
C/B GRD PLATE  
INPROSEAL ON DRIVE END  
OIL RESISTANT SLEEVING ON LEADS  
B5F4C4 HIGH STRENGTH STEEL AISI 4142 SHAFT MATERIAL  
(3)N.C. CLASS F TRIP TSTAT - LDS TO MAIN CONDUIT BOX  
NEMA TYPE GRD PAD  
F1 MOUNTING  
FEATURES OF MODEL 5KGS449SAA321D2  
EXCEPT IN 5011 FRAME

Diagrams for Model: 5KGS511SAA224

**Connection Diagram**  
**GEM2034E-FIG20**



**Performance Characteristics**

1st Winding 1st Connection

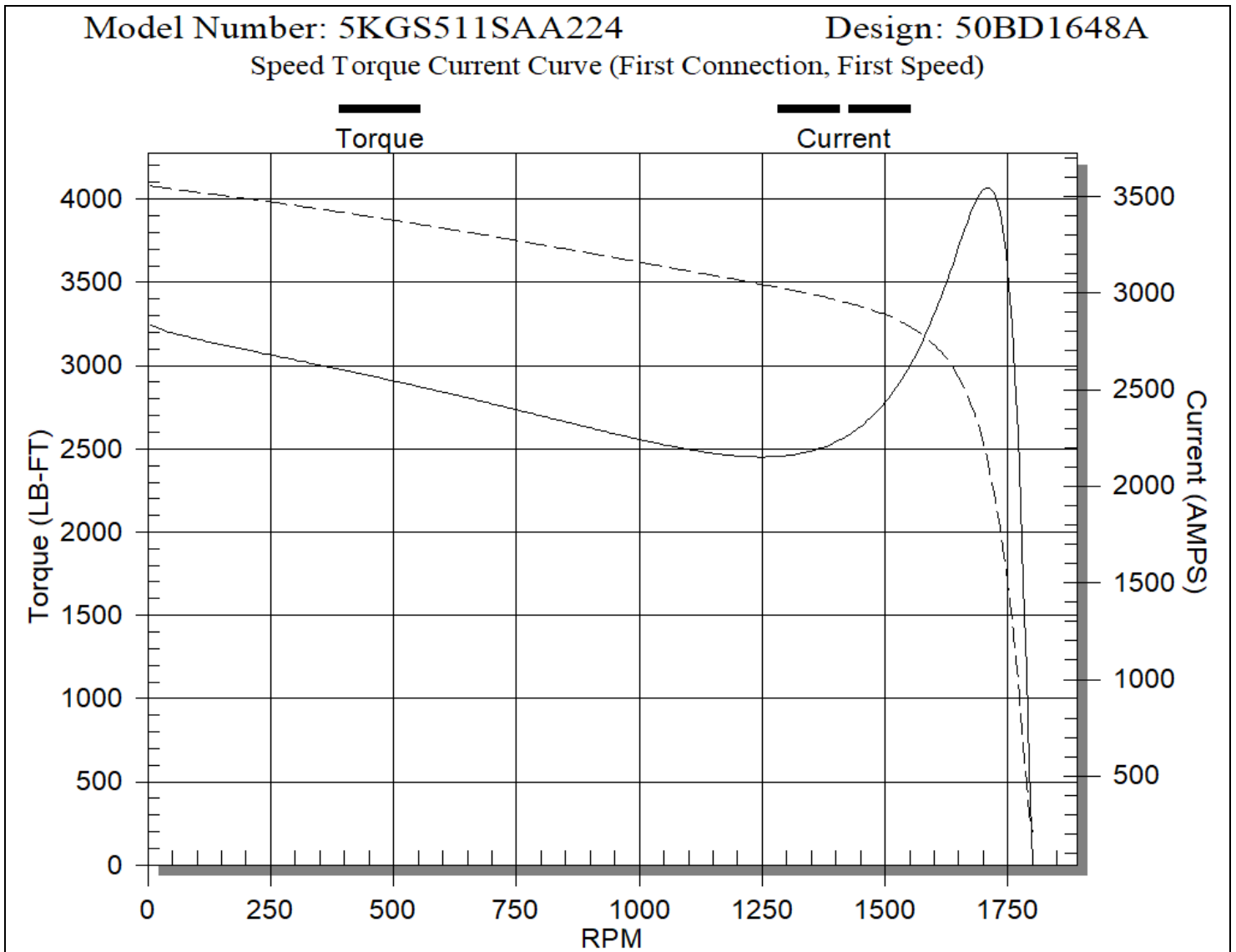
**Design: 50BD1648A**

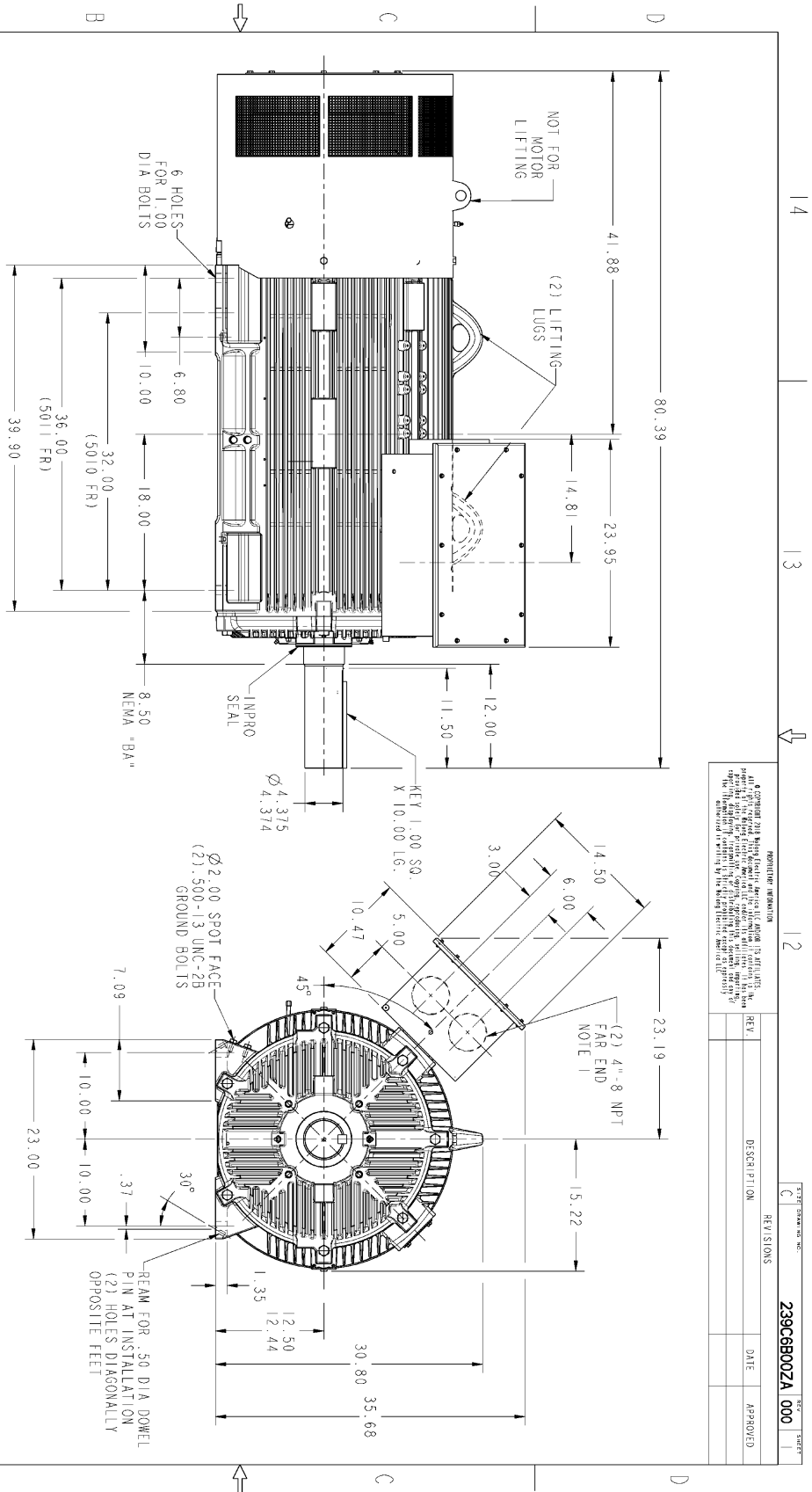
LOAD %	125.0	115.0	100.0	75.0	50.0	25.0	0.0
% EFF	96.17	96.30	96.20	96.49	96.07	93.89	0.00
% PF	86.43	86.06	85.00	81.35	72.45	50.29	3.30
AMPS	703.76	649.39	572.00	447.14	336.19	247.76	206.60

TORQ(FL)#FT 1471.71      TORQ(LR)%FL 221.87      TORQ(BD)%FL 276.29  
 AMPS(LR) 3553.50      PF AT START 0.38

This motor is capable of two cold or one hot start with a maximum connected load inertia of 7613.0 Lb-Ft Sq (320.8 Kg-meter Sq) at 100% voltage, where the load torque varies with the square of the speed. Acceleration time with maximum inertia and the above load type is 19 seconds. Safe stall time at 100% voltage is 38 seconds cold, 23 seconds hot. Rotor inertia is 199.63 Lb-Ft Sq (8.413 Kg-meter Sq).

Open Circuit A-C: 0.771      Short Circuit D-C: 0.049  
 Short Circuit A-C: 0.038      X/R Ratio: 18.474  
 Stator Slots: 72      Rotor Slots: 58





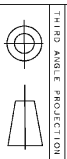
REVISIONS

REV	DESCRIPTION	DATE	APPROVED
C			

239C6B00ZA 000

NOTES:

- CONDUIT BOX MAY BE PLACED WITH THE ENTRANCE DOWN, UP OR ON EITHER SIDE.
- F-I ASSEMBLY AS SHOWN.
- ALL DIMENSIONS ARE IN INCHES.



SIGNATURES	DATE
MODEL: SHINJAK 12726/19	12726/19
RETAIL: SHINJAK 12726/19	12726/19
CHECKS: RABO 12726/19	12726/19
ENGRG: SANCOSI 12726/19	12726/19
W/E: . . . . .	. . . . .
QUALITY: . . . . .	. . . . .
ISSUED: SHINJAK 12726/19	12726/19

SOL. ID: MODEL: 239C6B00ZA

SCALE: 9:125

REF. NO.: 239C6B00ZA

SHEET 1 OF 1

**GE INDUSTRIAL MOTORS**  
a WOODWARD company

**OUTLINE**  
**QUANTUM 5010/5011 LB, TEFC**  
**2500 CU IN C/BOX**

239C6B00ZA 000