

PRODUCT INFORMATION PACKET

Model No: 143TTDR6028

Catalog No: U245

General Purpose Motor, 1.50 HP, 3 Ph, 60 Hz, 230/460 V, 3600 RPM, 143T Frame, DP



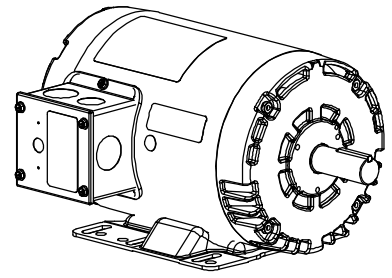
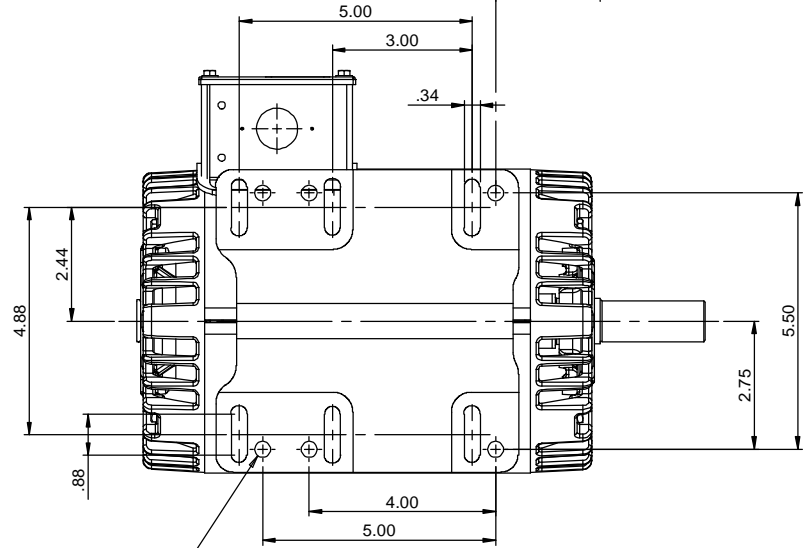
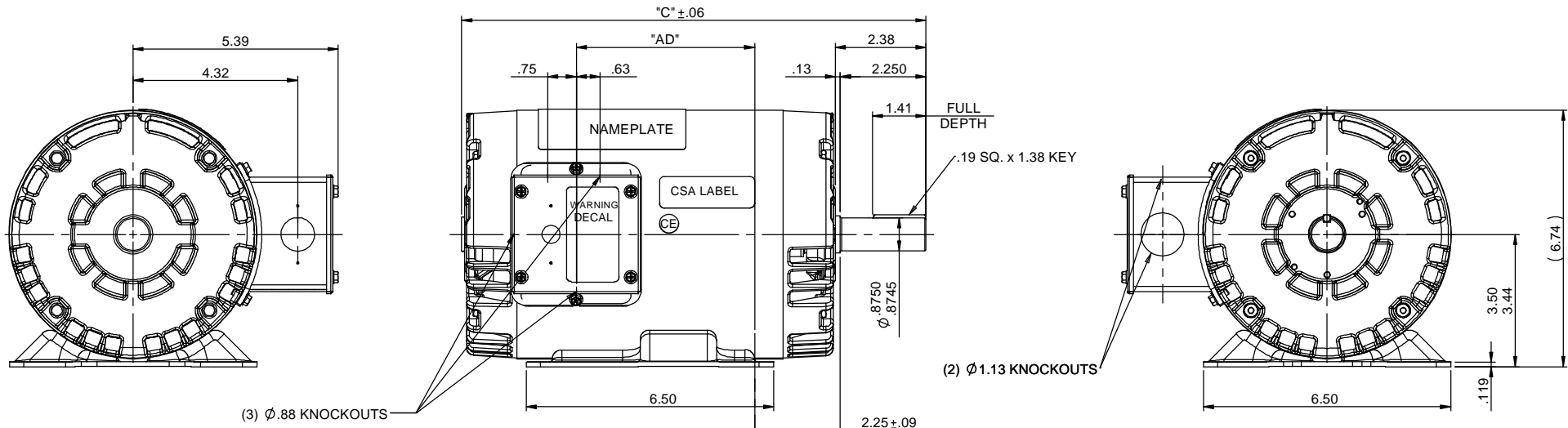
Regal and are trademarks of Regal Rexnord Corporation or one of its affiliated companies.
©2022 Regal Rexnord Corporation, All Rights Reserved. MC017097E

Nameplate Specifications

Output HP	1.50 Hp	Output KW	1.1 kW
Frequency	60 Hz	Voltage	230/460 V
Current	4.0/2.0 A	Speed	3490 rpm
Service Factor	1.15	Phase	3
Efficiency	84 %	Power Factor	82
Duty	Continuous	Insulation Class	F
Design Code	B	KVA Code	M
Frame	143T	Enclosure	Drip Proof
Thermal Protection	Thermostat	Ambient Temperature	40 °C
Drive End Bearing Size	6205	Opp Drive End Bearing Size	6203
UL	Recognized	CSA	Y
CE	Y	IP Code	22
Number of Speeds	1		

Technical Specifications

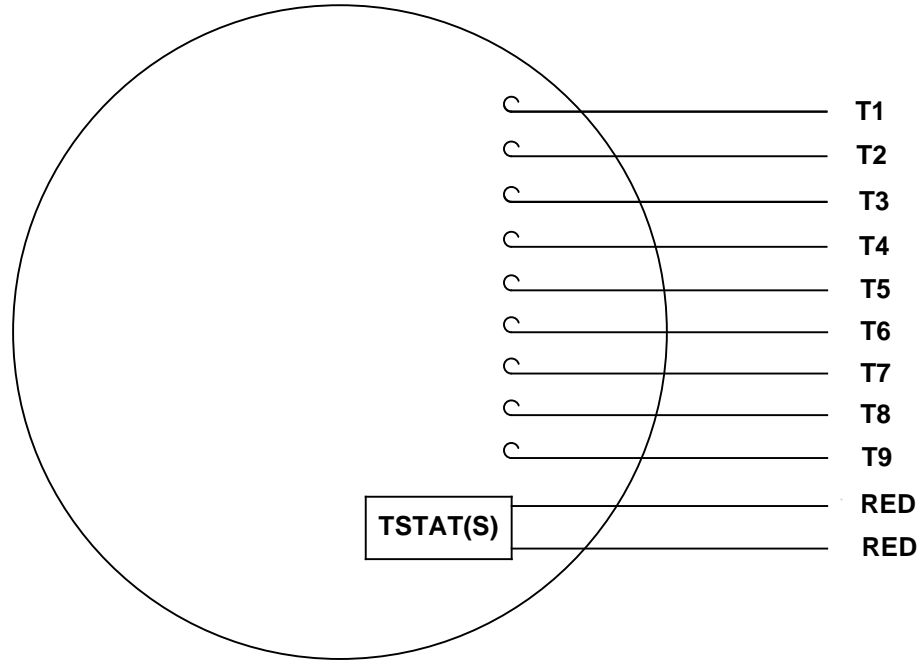
Electrical Type	Squirrel Cage Induction Run	Starting Method	Across The Line
Poles	2	Rotation	Reversible
Resistance Main	8.5 Ohms	Mounting	Rigid Base
Motor Orientation	Horizontal	Drive End Bearing	Ball
Opp Drive End Bearing	Ball	Frame Material	Rolled Steel
Shaft Type	T	Overall Length	12.19 in
Frame Length	7.00 in	Shaft Diameter	0.875 in
Shaft Extension	2.38 in	Assembly/Box Mounting	F1 ONLY
Connection Drawing	005010.20ME	Outline Drawing	028859ME-700



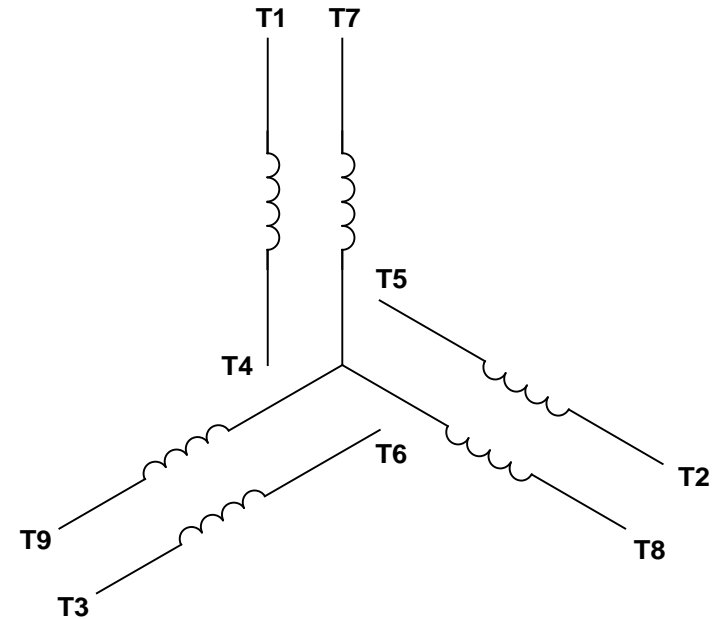
DASH NO.	"C"	"AD"
600	11.19	3.69
650	11.69	4.16
700	12.19	4.69
750	12.69	5.19
800	13.19	5.69
850	13.69	6.19
900	14.19	6.69

		TOLERANCES UNLESS SPECIFIED				DRAWN VS 7/21/2010	
		DEC	INCHES			CHK	
		X	±.1	TITLE OUTLINE - 140T/56HZ FRAME		APPR VS 7/21/2010	
		XX	±.03	OPEN DRIP PROOF - RIGID		SCALE 3:8	
		XXX	±.005			REF 028859	
01		REMOVED WATSAVER DECAL	VS 11/10/2011	XXXX	±.0005	MATL FMF	
NO		REVISION	BY & DATE	CHK	ANG ±1/2°	PAGE 1 OF 1	
		THIRD ANGLE PROJECTION		RFP		PREV	
				NETWORK FILE NAME 028859ME		SIZE B	DRAWING NO 028859ME
						REV 01	

VIEW FROM OUTSIDE OF MOTOR AT SWITCH END.



LINE LEADS



RBC PROPRIETARY AND CONFIDENTIAL INFORMATION
 This document is the property of REGAL BELOIT CORPORATION ("RBC") including its subsidiaries and divisions and contains proprietary information of RBC. This document is loaned on the express condition that neither it nor the information contained therein shall be disclosed to others without the express written consent of RBC, and that the information shall be used by the recipient only as approved expressly by RBC. This document shall be returned to RBC upon its request. This document may be subject to certain restrictions under U.S. export control laws and regulations.

VOLTAGE	L1	L2	L3	JOIN & INSULATE
HIGH	T1	T2	T3	(T4, T7) (T5, T8) (T6, T9)
LOW	T1, T7	T2, T8	T3, T9	T4, T5, T6

		TOLERANCES UNLESS SPECIFIED				DRAWN RDW 04/13/04	
		DEC	INCHES			CHK	
		.X	±.1			APPR	
		.XX	±.01			SCALE 1:1	
			.XXX	±.005	TITLE EXTERNAL WIRING DIAGRAM		REF
			.XXX	±.0005	3 PHASE		
--	REDRAWN IN SOLIDWORKS	VJB 02/08/11		.XXX	±.0005	MAT'L DECAL - 004014 (TSTAT) - 080582	FMF 129027
NO	REVISION	BY & DATE	CHK	ANG	±1/2°	FINISH	PAGE OF
THIRD ANGLE PROJECTION			RFP	PREV			SIZE
			NETWORK FILE NAME 00501020ME			DRAWING NO	
						A	
						005010-20ME	
						REV	
						--	

CERTIFICATION DATA SHEET

Model#: 143TTDR6028 AA
CONN. DIAGRAM: 005010.20ME
OUTLINE: 028859ME-700

WINDING#: T632173 DR 3
ASSEMBLY: F1 ONLY

TYPICAL MOTOR PERFORMANCE DATA

HP	KW	SYNC. RPM	F.L. RPM	FRAME	ENCLOSURE	KVA CODE	DESIGN
1 1/2&1 1/2	1.12&1.12	3600	3490&2890	143T	DP	M	B

PH	Hz	VOLTS	FL AMPS	START TYPE	DUTY	INSL	S.F	AMB°C	ELEVATION
3	60/50	230/460#190/ 380	4.4- 4/2&4.8/2.4	ACROSS THE LINE	CONTINUOU S	F4	1.15/1.15	40	3300

FULL LOAD EFF: 84&84	3/4 LOAD EFF: 82.2	1/2 LOAD EFF: 79.1	GTD. EFF	ELEC. TYPE	NO LOAD AMPS
FULL LOAD PF: 82&78.5	3/4 LOAD PF: 76.3	1/2 LOAD PF: 64.7	0	SQ CAGE IND RUN	2 / 1

F.L. TORQUE	LOCKED ROTOR AMPS	L.R. TORQUE	B.D. TORQUE	F.L. RISE°C
2.25 LB-FT	42 / 21	8.5 LB-FT 378	11.2 LB-FT 498	0

SOUND PRESSURE @ 3 FT.	SOUND POWER	ROTOR WK^2	MAX. WK^2	SAFE STALL TIME	STARTS /HOUR	APPROX. MOTOR WGT
0 dBA	10 dBA	0.063 LB-FT^2	0.1 LB-FT^2	10 SEC.	0	0 LBS.

***** SUPPLEMENTAL INFORMATION *****

DE BRACKET TYPE	ODE BRACKET TYPE	MOUNT TYPE	ORIENTATION	SEVERE DUTY	HAZARDOUS LOCATION	DRIP COVER	SCREENS	PAINT
STANDARD	STANDARD	RIGID	HORIZONTAL	FALSE	NONE	FALSE	NONE	BLUE (ENAMEL)

BEARINGS		GREASE	SHAFT TYPE	SPECIAL DE	SPECIAL ODE	SHAFT MATERIAL	FRAME MATERIAL
DE	OPE						
BALL	BALL	POLYREX EM	T	NONE	NONE	1144 STRESSPROOF (C-223)	ROLLED STEEL
6205	6203						

THERMO-PROTECTORS				THERMISTORS	CONTROL	SPACE /n HEATERS
THERMOSTATS	PROTECTORS	WDG RTDs	BRG RTDs			
TSTATS (N/C)	NOT	NONE	NONE	NONE	FALSE	NONE VOLTS

If Inverter equals NONE, contact factory for further information

INVERTER TORQUE: NONE
INV. HP SPEED RANGE: NONE
ENCODER: NONE
NONE NONE
NONE NONE PPR
BRAKE: NONE NONE
NONE P/N NONE
NONE NONE
NONE FT-LB NONE V NONE Hz

*
N
O
T
E
S
*

DATE: 06/22/2017 07:42:10 AM
 FORM 3531 REV.3 02/07/99

** Subject to change without notice.



MARATHON ELECTRIC CORPORATION
TYPICAL PERFORMANCE CURVE for AC MOTOR

Customer

Curve at

460

Volts

HP 1.5&1.5

PHASE 3

Model No 143TTDR6028

60

HZ

VOLTS 230/460&190/380

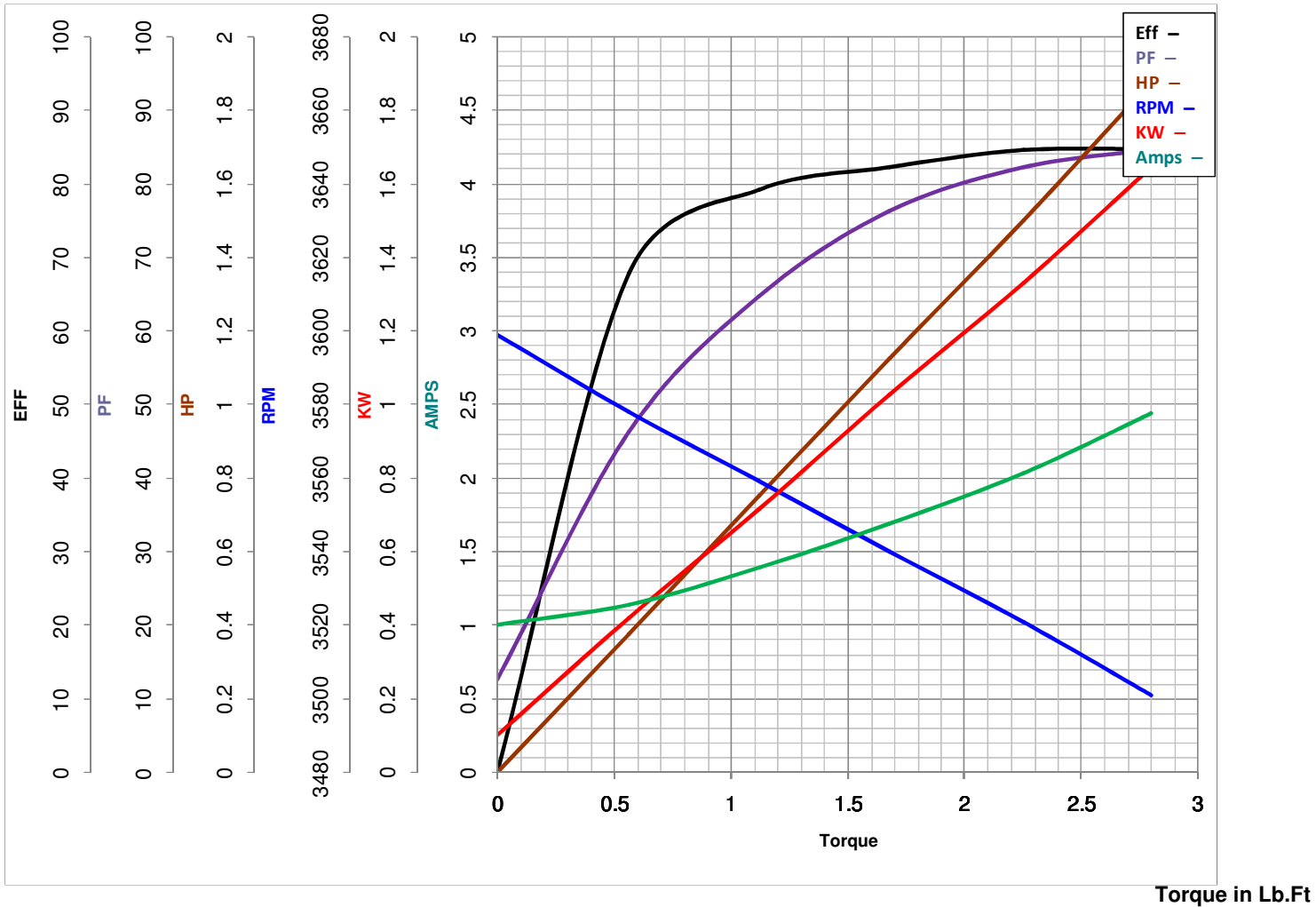
1.5

HP

Catalog No U245

HZ 60&50

RPM 3490&2890



FL TORQUE	<u>2.25</u>	Lb.Ft	FL AMPS	<u>4.4-4/2</u>	
BD TORQUE	<u>11.2</u>	Lb.Ft	PU TORQUE	<u>8.5</u>	Lb.Ft
LR TORQUE	<u>8.5</u>	Lb.Ft	LR AMPS	<u>21</u>	
WINDING	T632173-		Date		

EC Declaration of Conformity

The undersigned representing
the manufacturer:

Regal Beloit America
100 East Randolph St.
Wausau, WI 54401

and the authorized representative
established within the Community:

Marathon Electric UK
6F Thistleton Road Ind. Estate
Market Overton
Oakham, Rutland LE15 7PP UK

are committed to providing customers with products that comply with applicable regulations and international protocols to which they are subject, including the requirements of the European Parliament Directive on the Harmonization of the laws relating to electrical equipment designed for use within certain voltage limits (2014/35/EU).

Regal Beloit America declares that the following product(s), to which this declaration relates, are in conformity with the relevant sections of the EC standards listed below.

This statement supersedes any statements previously issued pertaining to the product(s) listed below and is subject to change without notice.

Model No : 143TTDR6028

(Model No. may contain prefix and/or suffix characters)

Catalog No : U245

Rework No : N/A

Directives :

Low Voltage Directive 2014/35/EU

Harmonized Standards Used :

EN 60034-1: 2010 (IEC 60034-1: 2010)

EN 60034-5: 2001/A1:2007 (IEC 60034-5: 2000/A1:2006)

Authorized Representative:



Michael A. Logsdon
Vice President, Technology

Authorized Representative in the Community:



Julian Clark
Marketing Engineer

Created on 09/01/2022

CE 22