

PRODUCT INFORMATION PACKET

Model No: 145TTDR6002

Catalog No: U247

General Purpose Motor, 3 HP, 3 Ph, 60 Hz, 230/460 V, 3600 RPM, 145T Frame, DP



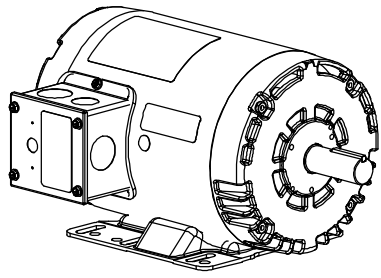
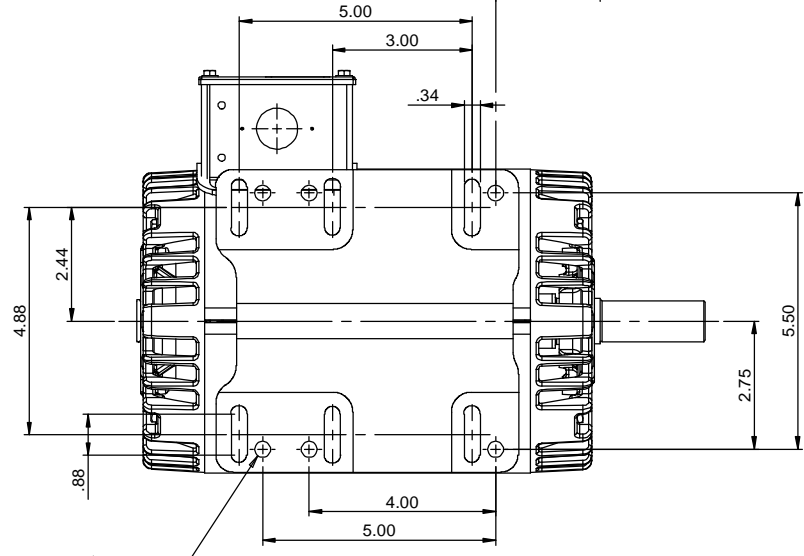
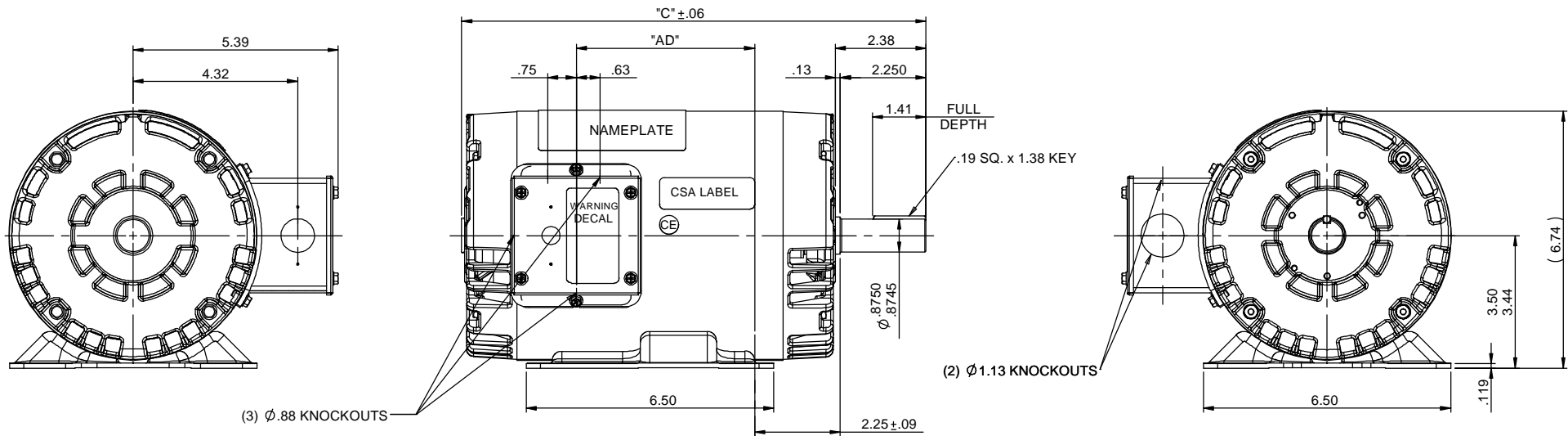
Regal and are trademarks of Regal Rexnord Corporation or one of its affiliated companies.
©2022 Regal Rexnord Corporation, All Rights Reserved. MC017097E

Nameplate Specifications

Output HP	3 Hp	Output KW	2.2 kW
Frequency	60 Hz	Voltage	230/460 V
Current	7.2/3.6 A	Speed	3500 rpm
Service Factor	1.15	Phase	3
Efficiency	86.5 %	Power Factor	88
Duty	Continuous	Insulation Class	F
Design Code	B	KVA Code	K
Frame	145T	Enclosure	Drip Proof
Thermal Protection	Thermostat	Ambient Temperature	40 °C
Drive End Bearing Size	6205	Opp Drive End Bearing Size	6203
UL	Recognized	CSA	Y
CE	Y	IP Code	22
Number of Speeds	1		

Technical Specifications

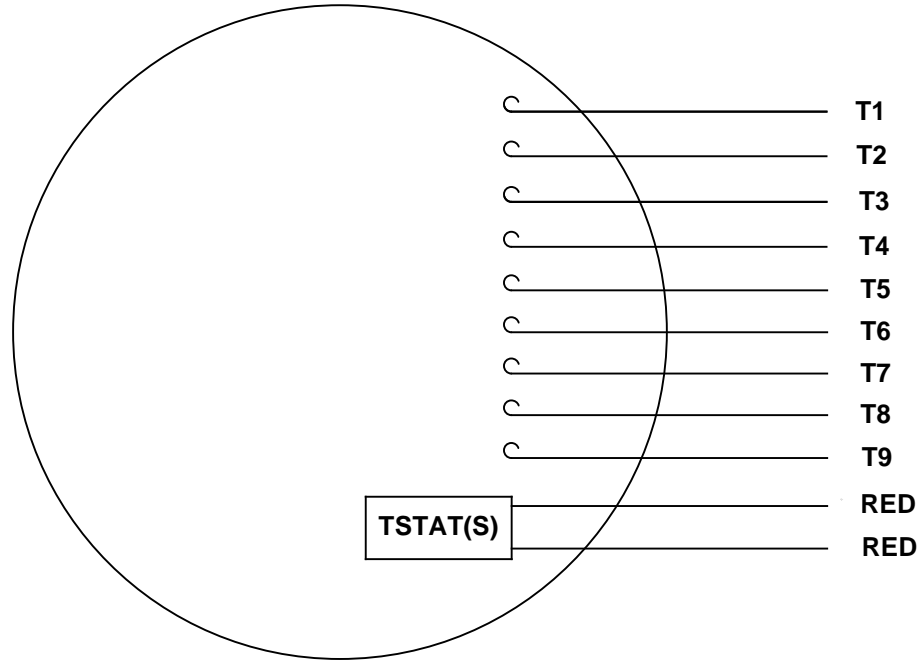
Electrical Type	Squirrel Cage Inverter Rated	Starting Method	Line Or Inverter
Poles	2	Rotation	Reversible
Resistance Main	0 Ohms	Mounting	Rigid Base
Motor Orientation	Horizontal	Drive End Bearing	Ball
Opp Drive End Bearing	Ball	Frame Material	Rolled Steel
Shaft Type	T	Overall Length	12.69 in
Frame Length	7.50 in	Shaft Diameter	0.875 in
Shaft Extension	2.38 in	Assembly/Box Mounting	F1 ONLY
Inverter Load	CONSTANT 10:1		
Outline Drawing	028859ME-775	Connection Drawing	005010.20ME



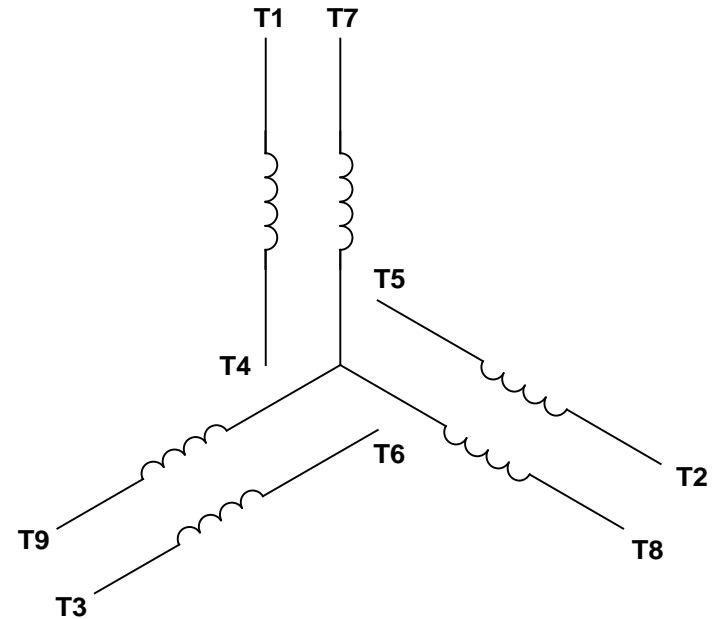
DASH NO.	"C"	"AD"
600	11.19	3.69
650	11.69	4.16
700	12.19	4.69
750	12.69	5.19
800	13.19	5.69
850	13.69	6.19
900	14.19	6.69

TOLERANCES UNLESS SPECIFIED				DRAWN VS 7/21/2010	
DEC	INCHES			CHK	
	X ±.1			APPR VS 7/21/2010	
	XX ±.03			SCALE 3:8	
	XXX ±.005			REF 028859	
01	REMOVED WATTSaver DECAL	VS 11/10/2011	XXXX ±.0005	MATL	FMF
NO	REVISION	BY & DATE	CHK LANG ±1/2"	FINISH	PAGE 1 OF 1
THIRD ANGLE PROJECTION			RFP	PREV	SIZE B
			NETWORK FILE NAME 028859ME	DRAWING NO 028859ME	REV 01

VIEW FROM OUTSIDE OF MOTOR AT SWITCH END.



LINE LEADS



RBC PROPRIETARY AND CONFIDENTIAL INFORMATION
 This document is the property of REGAL BELOIT CORPORATION ("RBC") including its subsidiaries and divisions and contains proprietary information of RBC. This document is loaned on the express condition that neither it nor the information contained therein shall be disclosed to others without the express written consent of RBC, and that the information shall be used by the recipient only as approved expressly by RBC. This document shall be returned to RBC upon its request. This document may be subject to certain restrictions under U.S. export control laws and regulations.

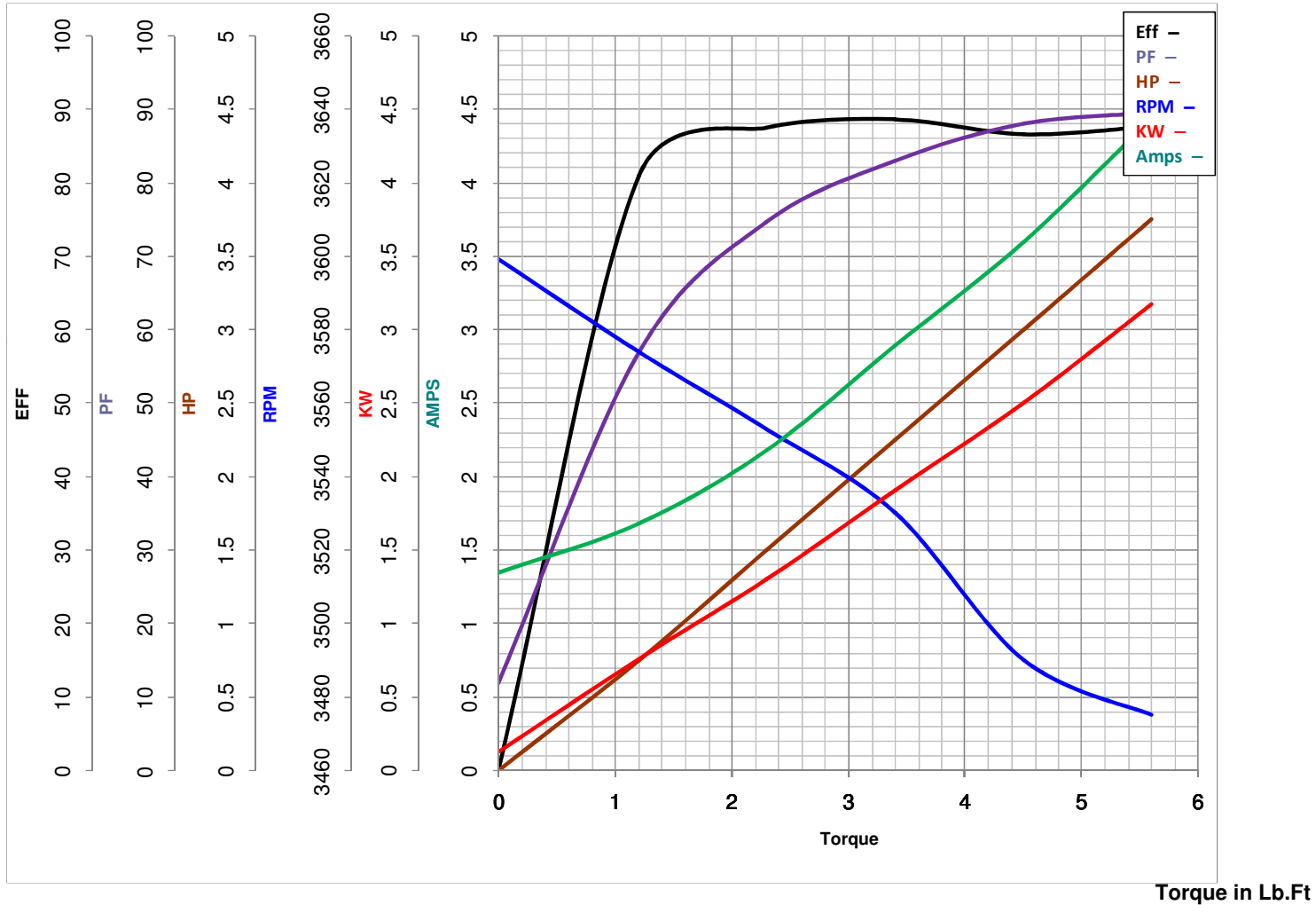
VOLTAGE	L1	L2	L3	JOIN & INSULATE
HIGH	T1	T2	T3	(T4, T7) (T5, T8) (T6, T9)
LOW	T1, T7	T2, T8	T3, T9	T4, T5, T6

				TOLERANCES UNLESS SPECIFIED		DRAWN RDW 04/13/04	
				DEC	INCHES	CHK	
				.X	±.1	APPR	
				.XX	±.01	SCALE 1:1	
				.XXX	±.005	REF	
--	REDRAWN IN SOLIDWORKS	VJB 02/08/11		.XXXX	±.0005	MAT'L DECAL - 004014 (TSTAT) - 080582	
NO	REVISION	BY & DATE	CHK	ANG	±1/2°	FINISH	
THIRD ANGLE PROJECTION		RFP		PREV		SIZE	DRAWING NO
				NETWORK FILE NAME 00501020ME		A	005010-20ME
							REV
							--



MARATHON ELECTRIC CORPORATION
TYPICAL PERFORMANCE CURVE for AC MOTOR

Customer _____ Curve at 460 Volts HP 3&3 PHASE 3
60 HZ
3 HP VOLTS 230/460&190/380
 Model No 145TTDR6002
 Catalog No U247 HZ 60&50 RPM 3500&2890



FL TORQUE	<u>4.5</u>	Lb.Ft	FL AMPS	<u>7.2/3.6</u>	
BD TORQUE	<u>17.3</u>	Lb.Ft	PU TORQUE	<u>13.6</u>	Lb.Ft
LR TORQUE	<u>13.96</u>	Lb.Ft	LR AMPS	<u>33.14</u>	
WINDING	T632175-		Date	3/6/2019	

EC Declaration of Conformity

The undersigned representing
the manufacturer:

Regal Beloit America
100 East Randolph St.
Wausau, WI 54401

and the authorized representative
established within the Community:

Marathon Electric UK
6F Thistleton Road Ind. Estate
Market Overton
Oakham, Rutland LE15 7PP UK

are committed to providing customers with products that comply with applicable regulations and international protocols to which they are subject, including the requirements of the European Parliament Directive on the Harmonization of the laws relating to electrical equipment designed for use within certain voltage limits (2014/35/EU).

Regal Beloit America declares that the following product(s), to which this declaration relates, are in conformity with the relevant sections of the EC standards listed below.

This statement supersedes any statements previously issued pertaining to the product(s) listed below and is subject to change without notice.

Model No : 145TTDR6002

(Model No. may contain prefix and/or suffix characters)

Catalog No : U247

Rework No : N/A

Directives :

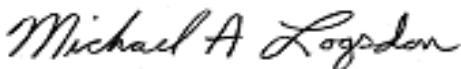
Low Voltage Directive 2014/35/EU

Harmonized Standards Used :

EN 60034-1: 2010 (IEC 60034-1: 2010)

EN 60034-5: 2001/A1:2007 (IEC 60034-5: 2000/A1:2006)

Authorized Representative:



Michael A. Logsdon
Vice President, Technology

Authorized Representative in the Community:



Julian Clark
Marketing Engineer

Created on 09/01/2022

CE 22