

# PRODUCT INFORMATION PACKET

Model No: 404TTDS6086

Catalog No: U270

General Purpose Motor, 60 HP, 3 Ph, 60 Hz, 230/460 V, 1200 RPM, 404T Frame, DP



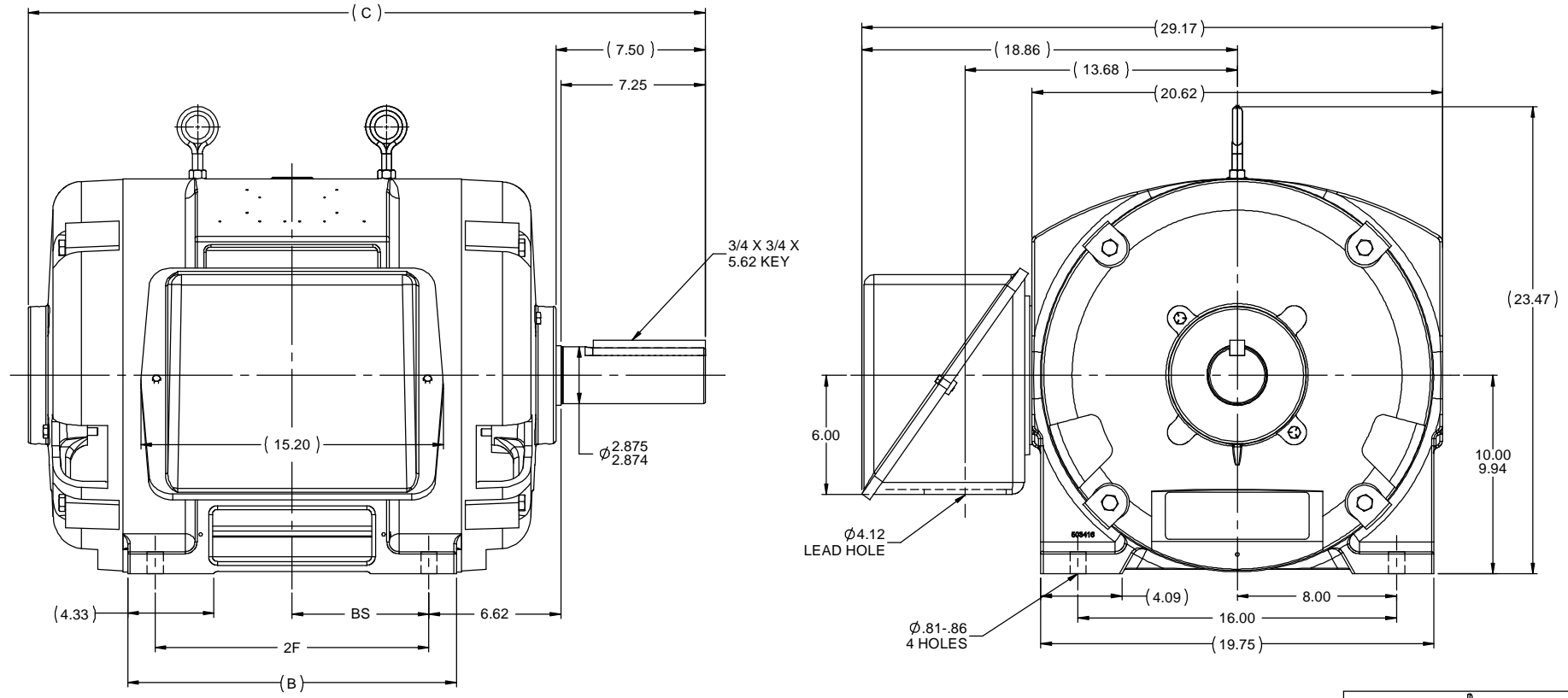
Regal and are trademarks of Regal Rexnord Corporation or one of its affiliated companies.  
©2022 Regal Rexnord Corporation, All Rights Reserved. MC017097E

### Nameplate Specifications

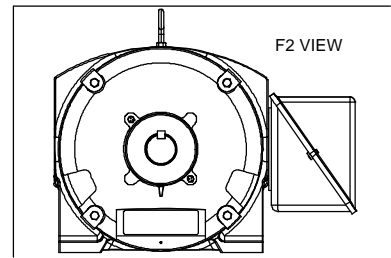
Output HP	<b>60 Hp</b>	Output KW	<b>45.0 kW</b>
Frequency	<b>60 Hz</b>	Voltage	<b>230/460 V</b>
Current	<b>146.0/73.0 A</b>	Speed	<b>1185 rpm</b>
Service Factor	<b>1.15</b>	Phase	<b>3</b>
Efficiency	<b>95 %</b>	Power Factor	<b>81.5</b>
Duty	<b>Continuous</b>	Insulation Class	<b>F</b>
Design Code	<b>B</b>	KVA Code	<b>G</b>
Frame	<b>404T</b>	Enclosure	<b>Drip Proof</b>
Thermal Protection	<b>Thermostat</b>	Ambient Temperature	<b>40 °C</b>
Drive End Bearing Size	<b>6316</b>	Opp Drive End Bearing Size	<b>6313</b>
UL	<b>No</b>	CSA	<b>Y</b>
CE	<b>Y</b>	IP Code	<b>12</b>
Number of Speeds	<b>1</b>		

### Technical Specifications

Electrical Type	<b>Squirrel Cage Induction Run</b>	Starting Method	<b>Across The Line</b>
Poles	<b>6</b>	Rotation	<b>Reversible</b>
Resistance Main	<b>.113 Ohms</b>	Mounting	<b>Rigid Base</b>
Motor Orientation	<b>Horizontal</b>	Drive End Bearing	<b>Ball</b>
Opp Drive End Bearing	<b>Ball</b>	Frame Material	<b>Cast Iron</b>
Shaft Type	<b>T</b>	Overall Length	<b>32.51 in</b>
Frame Length	<b>15.50 in</b>	Shaft Diameter	<b>2.875 in</b>
Shaft Extension	<b>7.5 in</b>	Assembly/Box Mounting	<b>F1/F2 CAPABLE</b>
Outline Drawing	<b>B-SS509599-1550</b>	Connection Drawing	<b>A-EE7308AD</b>



- NOTES:  
 1. CONDUIT BOX CAN BE ROTATED IN 90 ° STEPS.  
 2. CONDUIT BOX CAN BE MOUNTED ON OPPOSITE SIDE BY REMOVING BRACKETS AND TURNING FRAME 180 °  
 3. NAMEPLATES TO BE READ FROM CONDUIT BOX SIDE OF MOTOR.

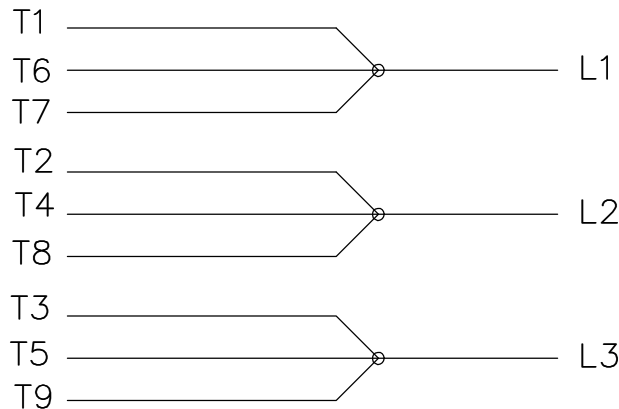


DASH	FRAME	B	C	BS	2F
1550	404T	15.00	32.51	6.12	12.25
1700	405T	16.50	34.01	6.88	13.75

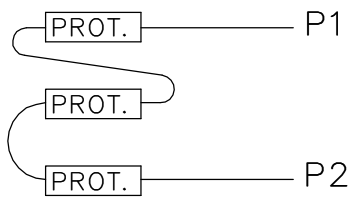
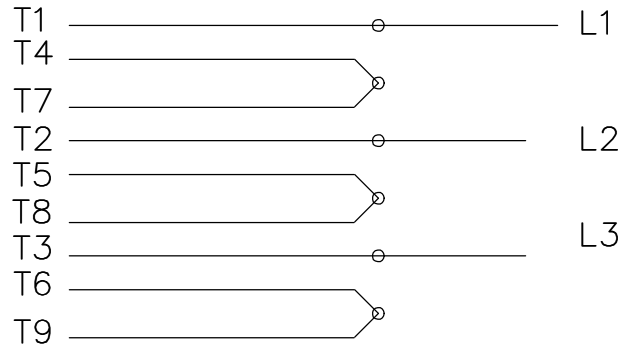
REVISION		BY & DATE		CHK		ANG		±7'30"		FINISH		PREV		RFP		NETWORK FILE NAME		SS509599			
11	ADDED F2 VIEW	TJW	1/6/2010	CTO	DEC	INCHES				TITLE		OUTLINE		400T FR. - DR.PR. - (STD0		DRAWN		TJB 2/24/1988			
10	REDRAWN IN AUTOCAD	TAT	6/29/2004	ML	X	±.1				SCALE		3:16		CHK		JL 2/24/1988		APPDR		ML 2/24/1988	
9	REPLACED ONE EYEBOLT WITH TWO CN28063	BJW	2/10/2000	XX		±.03				REF				FMF							
8	UPDATED C'BOX GEOMETRY CN28063	TRB	2/10/2000	XXX		±.005				PAGE		OF									
7	REDRAWN ON CADD	TLB	2/24/1988	XXXX		±.0005				SIZE		DRAWING NO		REV							
NO										SIZE		DRAWING NO		REV							



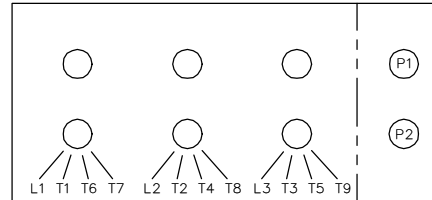
LOW VOLTAGE



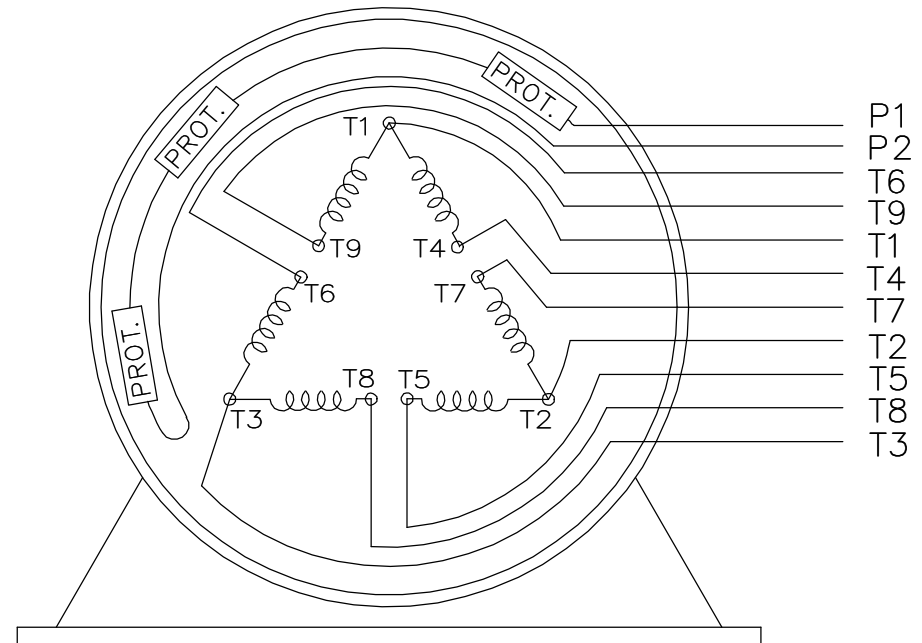
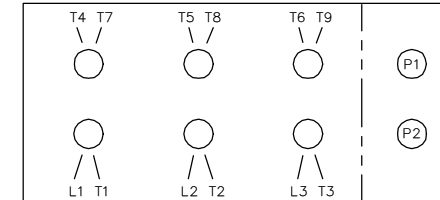
HIGH VOLTAGE



LOW VOLTAGE



HIGH VOLTAGE



VIEW OF TERMINAL END

WHEN MORE THAN ONE PROT. IS USED; PROT. ARE CONNECTED IN SERIES

DRAWING REVISION <b>L</b>	REVISION BY <b>JP</b>	REV DATE/© DATE <b>06-21-2019</b>	TOLERANCES (EXCEPT AS NOTED): DEC. INCH mm ANGLE .X ±0.1 [±3] ±7° 30" .XX ±0.02 [±0.5] .XXX ±0.005 [±0.13] .XXXX ±0.0005 [±0.013] REMOVE BURRS & BREAK SHARP EDGES: .003/.015 [.08/.38] X 45° CORNER FILLETS: R.02 [.5] MACHINED SURFACES: 200/ 5.1 INCH mm mm DIMENSIONS IN [BRACKETS] ARE FOR REFERENCE ONLY	DRAWN BY <b>MJD</b>	Regal Beloit America, Inc.
ECO <b>ECO-0168744</b>	APPROVED BY <b>MH</b>	DATE <b>06-21-2019</b>		DATE <b>12-19-1997</b>	
ECO DESCRIPTION <b>UPDATED TO CURRENT STANDARDS</b>				APPROVED BY <b>GK</b>	DESCRIPTION <b>CONN DIAGRAM-EXTERNAL</b>
COPYRIGHT (PER REVISION DATE) REGAL BELOIT AMERICA, INC. ALL RIGHTS RESERVED. PROPRIETARY AND CONFIDENTIAL INFORMATION - THIS DOCUMENT IS THE PROPERTY OF REGAL BELOIT AMERICA, INC. ("OWNER") AND CONTAINS OWNER'S PROPRIETARY INFORMATION. ANY PERSON, CORPORATION OR OTHER FIRM RECEIVING IT IS DEEMED, BY RECEIVING IT, TO AGREE THAT IT, AND/OR ANY PART OF IT, SHALL NOT BE DISCLOSED TO ANY PERSON, CORPORATION OR OTHER ENTITY, DUPLICATED, AND/OR USED, EXCEPT AS EXPRESSLY APPROVED IN WRITING IN ADVANCE BY OWNER. THIS DOCUMENT SHALL BE RETURNED TO OWNER UPON REQUEST. IT MAY BE SUBJECT TO CERTAIN RESTRICTIONS UNDER APPLICABLE EXPORT CONTROL LAWS AND REGULATIONS.				DATE <b>01-07-1998</b>	
			REFERENCE	MATERIAL	PROCESS/FINISH
			THIRD ANGLE PROJECTION	SIZE <b>A</b>	DRAWING NUMBER <b>EE7308AD</b>
					SHEET <b>1 OF 1</b>



Data Sheet

Date: 6/19/2017

Customer: \_\_\_\_\_

Attention: \_\_\_\_\_

Submitted by: FAREEDA DUDEKULA



404TTDS6086

Submittal

Data @ 460 V

Motor Load Data

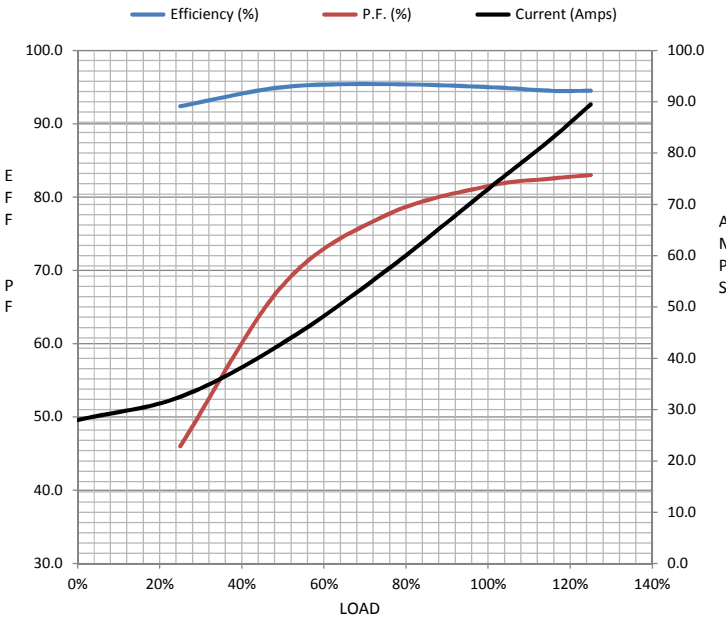
Load	0%	25%	50%	75%	100%	115%	125%	LR
Current (Amps)	28.0	32.5	43.0	57.0	73.0	82.5	89.5	435
Torque (ft-lb)	0.00	66.0	132	199	266	306	333	500
RPM	1200	1196	1194	1190	1185	1,184	1182	0
Efficiency (%)		92.4	95.0	95.4	95.0	94.5	94.5	
P.F. (%)	4.5	46.0	68.0	77.5	81.5	82.5	83.0	37.0

Motor Speed Data

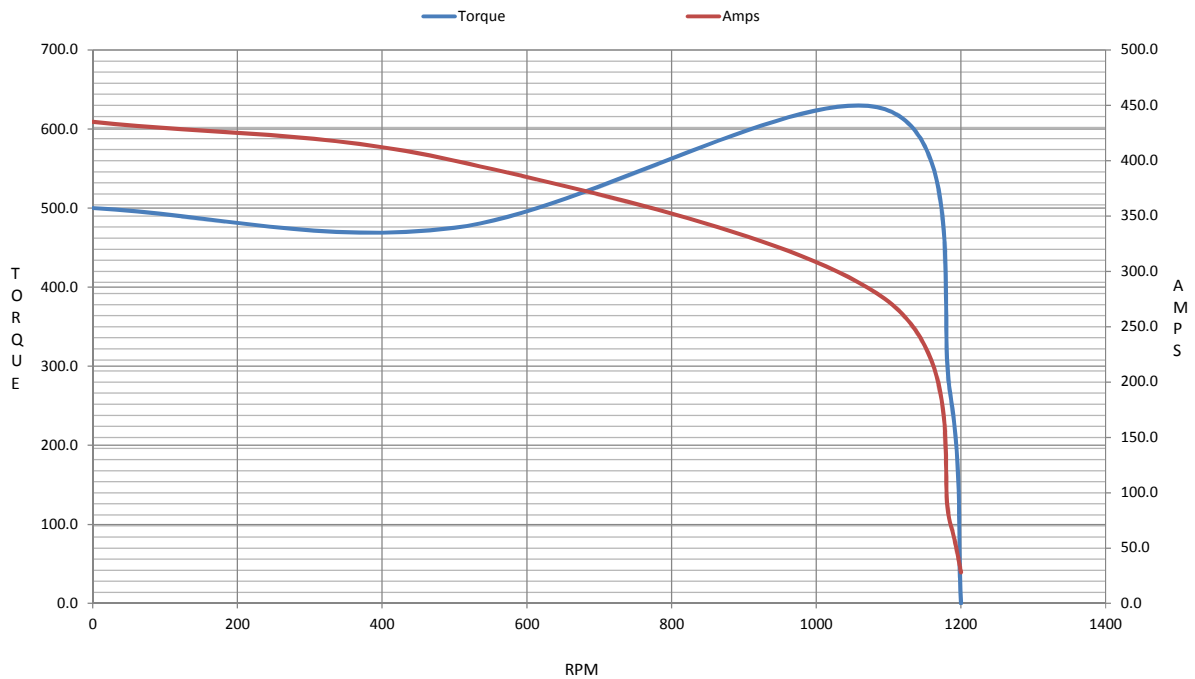
	LR	Pull-Up	BD	Rated	Idle
Speed (RPM)	0	500	1095	1185	1200
Current (Amps)	435	400	275	73.0	28.0
Torque (ft-lb)	500	475	625	266	0.00

Information Block

HP	60.0			
Sync. RPM	1200			
Frame	404			
Enclosure	DP			
Construction	TDS			
Voltage	230/460 V			
Frequency	60 Hz			
Design	B			
LR Code letter	G			
Service Factor	1.15			
Temp Rise @ FL	25 °C			
Duty	CONT			
Ambient	40 °C			
Elevation	1,000 feet			
Rotor/Shaft wk <sup>2</sup>	33.0 Lb-Ft <sup>2</sup>			
Ref Wdg	T404650 NONE			
Sound Pressure @ 1M	73 dBA			
VFD Rating	NONE			
Outline Dwg	B-SS509599-1550			
Conn. Diag	A-EE7308AD			
Additional Specifications:				
0				
0				
EQUIV CKT (OHMS / PHASE)				
R1	R2	X1	X2	Xm
0.0000	0.0000	0.0000	0.0000	0.0000



Speed -Torque Curve



## EC Declaration of Conformity

The undersigned representing  
the manufacturer:

Regal Beloit America  
100 East Randolph St.  
Wausau, WI 54401

and the authorized representative  
established within the Community:

Marathon Electric UK  
6F Thistleton Road Ind. Estate  
Market Overton  
Oakham, Rutland LE15 7PP UK

are committed to providing customers with products that comply with applicable regulations and international protocols to which they are subject, including the requirements of the European Parliament Directive on the Harmonization of the laws relating to electrical equipment designed for use within certain voltage limits (2014/35/EU).

Regal Beloit America declares that the following product(s), to which this declaration relates, are in conformity with the relevant sections of the EC standards listed below.

This statement supersedes any statements previously issued pertaining to the product(s) listed below and is subject to change without notice.

Model No : 404TTDS6086

(Model No. may contain prefix and/or suffix characters)

Catalog No : U270

Rework No : N/A

Directives :

Low Voltage Directive 2014/35/EU

Harmonized Standards Used :

EN 60034-1: 2010 (IEC 60034-1: 2010)

EN 60034-5: 2001/A1:2007 (IEC 60034-5: 2000/A1:2006)

Authorized Representative:



Michael A. Logsdon  
Vice President, Technology

Authorized Representative in the Community:



Julian Clark  
Marketing Engineer

Created on 09/01/2022

**CE 22**