



GE INDUSTRIAL MOTORS
a **WOLONG** company

Product Technical Information

November 23, 2020

Data shown is for the current revision model #. Ensure your nameplate model # matches.

Model Number:	5KS213DAE5045A
Catalog Number:	V4000
Instruction Manual:	GEK-95353
Connection Diagram:	GEM2034E-FIG3
Outline Drawing:	4002B5821NMP5210

Accessory Connection Diagrams

Bearing Thermocouple:	None	Heater:	3027JE-1C
RTD:	None	Thermistor:	None
Thermostat:	None	Winding Thermocouple:	None
Bearing RTD:	None		

Table of Contents

Specification	01
Performance Characteristics	02
Outline Drawing	03
Connection Drawing(s)	04
Spare parts	05

Marks:

MODEL NUMBER:	5KS213DAE5045A	Estimated Weight:	172 Lbs
Outline Drawing:	4002B5821NMP5210	Time Rating:	CONT
Connection Diagram:	GEM2034E-FIG3	Enclosure:	WPI
Instruction Book:	GEK-95353	Encl Construction:	OPEN
Design Code:	21BD0117A	Ambient Max(°C):	40
Type:	KS	Alt Ambient Max(°C):	--
Frame:	L213TP10	Insulation Class:	H
Phases:	3	NEMA Design:	B
Poles:	2	Nominal Efficiency:	86.5 %
Output Power:	5HP 3.7KW	Guaranteed Efficiency:	84.0 %
RPM:	3550	3/4 Load Efficiency:	--
Voltage:	230/460	KVA Code:	J
Hertz:	60	Max KVAR:	1.4
Amps - FL:	12.2/6.1	Power Factor:	88.0
Service Factor:	1.15	Bearing - DE:	7308
Alt Service Factor:	--	Bearing - ODE:	6208-2ZC3

Enclosure is Weather Protected One

Stamped Nameplate Notes:

PREMIUM EFFICIENT MOTOR
 NEMA ENCL WPI AND CSA ENCL DP
 ROT CCW FACING ODE LEAD/PH SEQUENCE 1-2-3/1-2-3
 HTR LDS HE1-HE2 115V 60W
 INVERTER DUTY PER NEMA MG1 PART 31
 ALTERNATE RATING FOR PWM CONTROL:
 1.0 SF VAR TORQUE RANGE 2.5-60 HZ
 SUITABLE FOR 3 HP, 190/380 V, 50 HZ
 WITH 9.2/4.6 AMPS AND 2965 RPM AT 1.00 SF



Additional Information:

2P - TP EXTN
C/BOX 55 CU IN-1.00 NPT
AUX LEADS EXIT WITH MOTOR LEADS
RCF 5000 CPM, STATIC DEFLECTION .0014 INCHES &
CENTER OF GRAVITY 8.59 INCHES
HOLLOW SHAFT HIGH THRUST
NON REV CPLG W/BX=1.00" KW=0.25"
OIL RESISTANT SLEEVING ON LEADS
BEARING LIFE 5788 HOURS AT 1900 LB THRUST
BEARING LIFE 8760 HOURS AT 1650 LB THRUST



Performance Characteristics

1st Winding 1st Connection

Design: 21BD0117A

Marks:

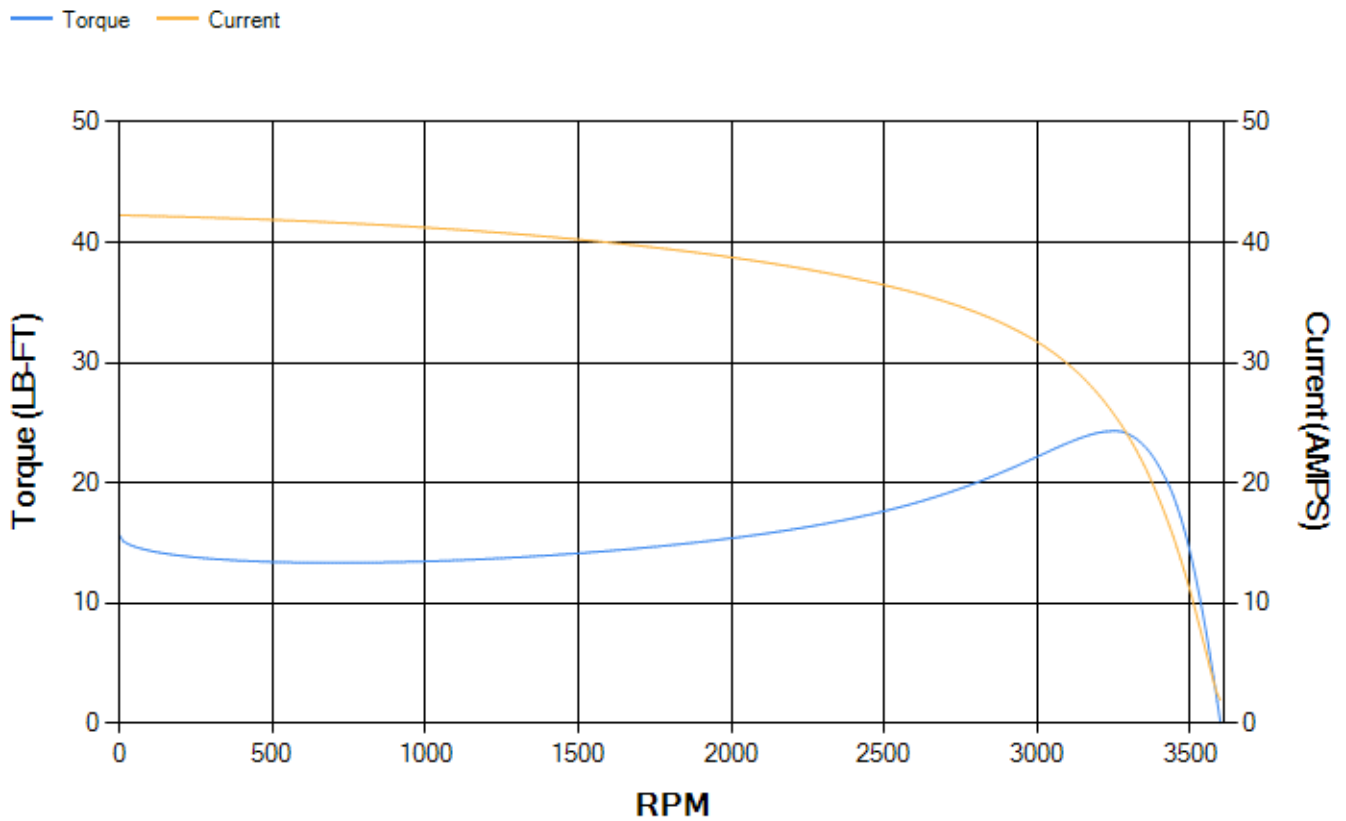
LOAD %	125.0	115.0	100.0	75.0	50.0	25.0	0.0
% EFF	89.85	90.12	90.57	90.24	88.74	82.57	0.00
% PF	89.46	89.12	88.22	85.06	77.48	57.9	11.55
AMPS	7.28	6.7	5.85	4.57	3.4	2.45	1.91

TORQ(FL)#FT	7.4	TORQ(LR)%FL	211.48	TORQ(BD)%FL	326.29
AMPS(LR)	42.26	PF AT START	0.34		

This motor is capable of two cold or one hot start with a maximum connected load inertia of 80 Lb-Ft Sq (3.37 Kg-meter Sq)at 100% voltage, where the load torque varies with the square of the speed. Acceleration time with maximum inertia and the above load type is 68 seconds. Safe stall time at 100% voltage is 116 seconds cold, 112 seconds hot. Rotor inertia is 0.31 Lb-Ft Sq (0.01 Kg-meter Sq).

Open Circuit A-C:	0.551	Short Circuit D-C:	0.012
Short Circuit A-C:	0.022	X/R Ratio:	4.48
Stator Slots:	36	Rotor Slots:	26

Speed Torque Current Curve (First Connection, First Speed)

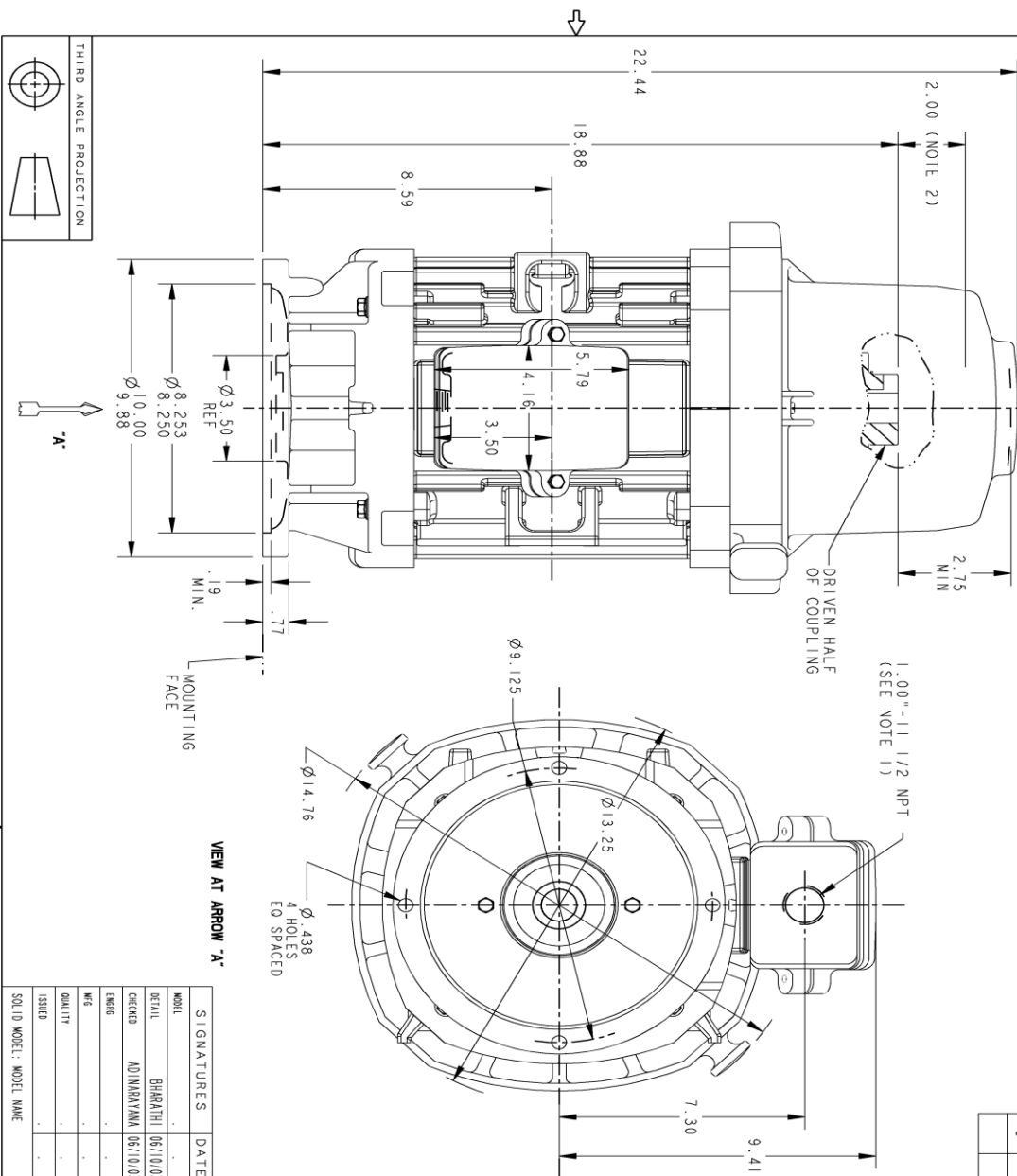


Marks:

NOTE 1: CONDUIT BOX MAY BE ASSEMBLED WITH ENTRANCE UP, DOWN, OR TO EITHER SIDE OF PUMP SHAFT & LOCKING NUT ABOVE TOP OF COUPLING.

NOTE 2: THE TOTAL HEIGHT OF PUMP SHAFT & LOCKING NUT ABOVE TOP OF COUPLING, MUST NOT EXCEED THIS DIMENSION.

NOTE 3: ALL DIMENSIONS ARE IN INCHES

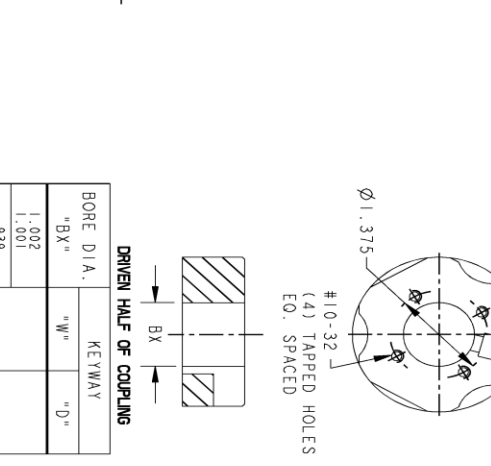


SIGNATURES	DATE
MODEL	
DETAIL	
CREATED	
ENGR	
CHK	
QUALITY	
ISSUED	
SOLID MODEL MODEL NAME	

REV	DESCRIPTION	DATE	APPROVED
1	ISAAC NO: #09-0117	02/12/09	RAGHU
2	ISAAC NO: #16-1067	12/28/16	RAVI
3	ISAAC #18-0869	10/23/18	SHAR

DRIVEN HALF OF COUPLING KEYWAY

BORE DIA. "B X"	"W"	"D"
1.002		
1.001	.250	.125
.939		
.938		
.877		
.876		
.752	.188	.094
.751		
1.002		
1.001		
.939	.250	.125
.938		
.877		
.876		
.752	.188	.094
.751		



PROPRIETARY INFORMATION
 © COPYRIGHT 2018 Wolong Electric America LLC AND/OR ITS AFFILIATES
 All rights reserved. This document and the information it contains is the property of Wolong Electric America LLC and/or its affiliates. It has been provided solely for transmission to the designated recipient and use of the information herein is strictly prohibited except as expressly authorized in writing by Wolong Electric America LLC.

SIZE DRAWING NO. B
 REV 003
 SHEET 1

4002B5821NMP5210

REV. DESCRIPTION DATE APPROVED

GE INDUSTRIAL MOTORS
 a wolong company

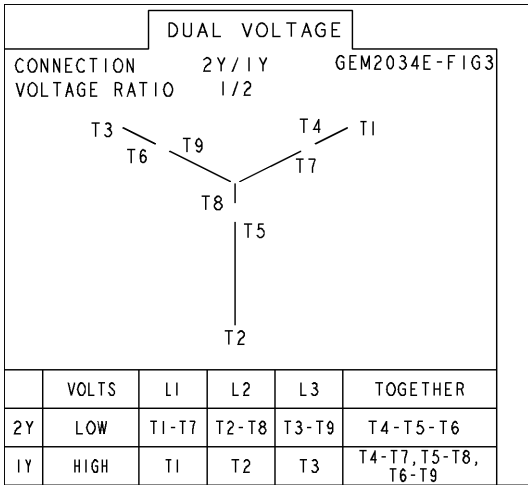
TITLE
 INDUCTION MOTOR OUTLINE
 FR210 WP-1 P-BASE VERTICAL
 HOLLOW SHAFT - HIGH THRUST

CIR (BD-10)

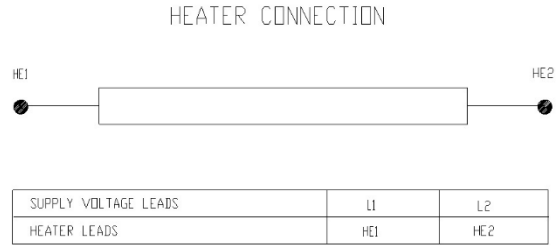
SCALE: .3 REF. NO:
 4002B5821NMP5210
 REV 003
 SHEET 1 OF 1

Marks:

Connection Diagram
GEM2034E-FIG3



Heater Connection
3027JE-1C



End shield Assembly		
Part Description	DE Side Part#	ODE Side Part#
End Shield	128D6024PA1	128D6025PA1
Bearing	235A2503EJ01	235A2503AA01
Slinger/Inproseal	235A2300FL1	

Fan & Fan Cover Assembly	
Part Description	Part#
Fan	
Fan Cover	

Conduit & Accessories Box Assembly	
Part Description	Part#
Conduit Box	4002B5721PA-G01

Mechanical Accessories	
Part Description	Part#
Brake	
Tachometer	

