



**GE INDUSTRIAL MOTORS**  
a **WOLONG** company

# Product Technical Information

November 23, 2020

Data shown is for the current revision model #. Ensure your nameplate model # matches.

<b>Model Number:</b>	<b>5KS213DAE5043A</b>
<b>Catalog Number:</b>	<b>V4001</b>
<b>Instruction Manual:</b>	GEK-95353
<b>Connection Diagram:</b>	GEM2034E-FIG3
<b>Outline Drawing:</b>	4002B5821NMP5210

## Accessory Connection Diagrams

<b>Bearing Thermocouple:</b>	None	<b>Heater:</b>	3027JE-1C
<b>RTD:</b>	None	<b>Thermistor:</b>	None
<b>Thermostat:</b>	None	<b>Winding Thermocouple:</b>	None
<b>Bearing RTD:</b>	None		

## Table of Contents

Specification	01
Performance Characteristics	02
Outline Drawing	03
Connection Drawing(s)	04
Spare parts	05

Marks:

<b>MODEL NUMBER:</b>	<b>5KS213DAE5043A</b>
<b>Outline Drawing:</b>	4002B5821NMP5210
<b>Connection Diagram:</b>	GEM2034E-FIG3
<b>Instruction Book:</b>	GEK-95353
<b>Design Code:</b>	21BD0116A
<b>Type:</b>	KS
<b>Frame:</b>	L213TP10
<b>Phases:</b>	3
<b>Poles:</b>	2
<b>Output Power:</b>	7.5HP 5.6KW
<b>RPM:</b>	3535
<b>Voltage:</b>	230/460
<b>Hertz:</b>	60
<b>Amps - FL:</b>	18.2/9.1
<b>Service Factor:</b>	1.15
<b>Alt Service Factor:</b>	--

<b>Estimated Weight:</b>	172 Lbs
<b>Time Rating:</b>	CONT
<b>Enclosure:</b>	WPI
<b>Encl Construction:</b>	OPEN
<b>Ambient Max(°C):</b>	40
<b>Alt Ambient Max(°C):</b>	--
<b>Insulation Class:</b>	H
<b>NEMA Design:</b>	B
<b>Nominal Efficiency:</b>	88.5 %
<b>Guaranteed Efficiency:</b>	86.5 %
<b>3/4 Load Efficiency:</b>	--
<b>KVA Code:</b>	H
<b>Max KVAR:</b>	2.1
<b>Power Factor:</b>	87.5
<b>Bearing - DE:</b>	7308
<b>Bearing - ODE:</b>	6208-2ZC3

Enclosure is Weather Protected One

---

**Stamped Nameplate Notes:**

PREMIUM EFFICIENT MOTOR  
 NEMA ENCL WPI AND CSA ENCL DP  
 ROT CCW FACING ODE LEAD/PH SEQUENCE 1-2-3/1-2-3  
 HTR LDS HE1-HE2 115V 60W  
 INVERTER DUTY PER NEMA MG1 PART 31  
 ALTERNATE RATING FOR PWM CONTROL:  
 1.0 SF VAR TORQUE RANGE 2.5-60 HZ  
 SUITABLE FOR 5 HP, 190/380 V, 50 HZ  
 WITH 15/7.5 AMPS AND 2950 RPM AT 1.00 SF



**Additional Information:**

2P - TP EXTN  
C/BOX 55 CU IN-1.00 NPT  
AUX LEADS EXIT WITH MOTOR LEADS  
RCF 5000 CPM, STATIC DEFLECTION .0014 INCHES &  
CENTER OF GRAVITY 8.59 INCHES  
HOLLOW SHAFT HIGH THRUST  
NON REV CPLG W/BX=1.00" KW=0.25"  
OIL RESISTANT SLEEVING ON LEADS  
BEARING LIFE 5788 HOURS AT 1900 LB THRUST  
BEARING LIFE 8760 HOURS AT 1650 LB THRUST



**Performance Characteristics**

1st Winding 1st Connection

**Design: 21BD0116A**

**Marks:**

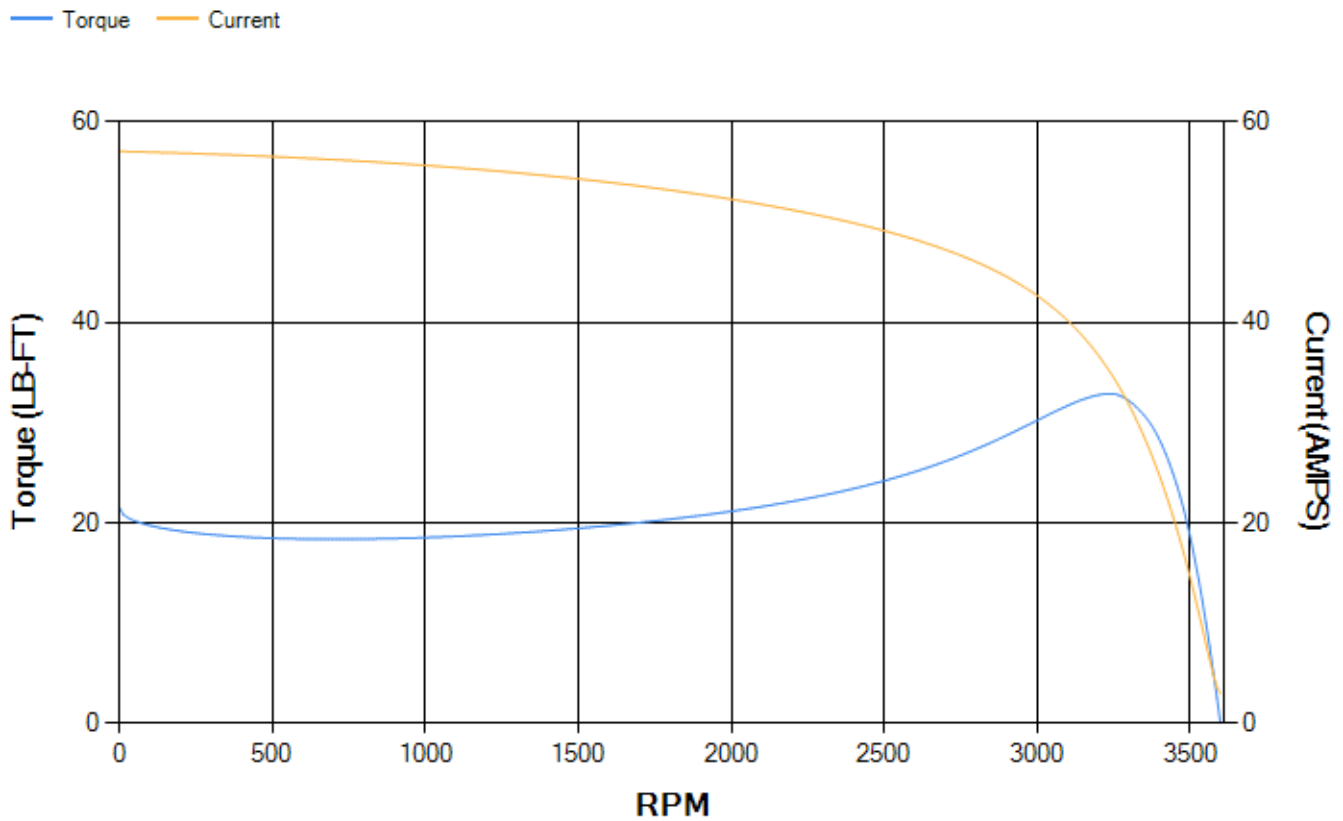
LOAD %	125.0	115.0	100.0	75.0	50.0	25.0	0.0
% EFF	89.18	89.67	90.46	90.73	90.02	85.36	0.00
% PF	88.44	88.16	87.32	84.13	76.2	55.66	8.74
AMPS	11.13	10.21	8.87	6.9	5.12	3.69	2.96

<b>TORQ(FL)#FT</b>	11.14	<b>TORQ(LR)%FL</b>	193.19	<b>TORQ(BD)%FL</b>	293.28
<b>AMPS(LR)</b>	57.09	<b>PF AT START</b>	0.36		

This motor is capable of two cold or one hot start with a maximum connected load inertia of 79 Lb-Ft Sq (3.33 Kg-meter Sq)at 100% voltage, where the load torque varies with the square of the speed. Acceleration time with maximum inertia and the above load type is 50 seconds. Safe stall time at 100% voltage is 85 seconds cold, 73 seconds hot. Rotor inertia is 0.31 Lb-Ft Sq (0.01 Kg-meter Sq).

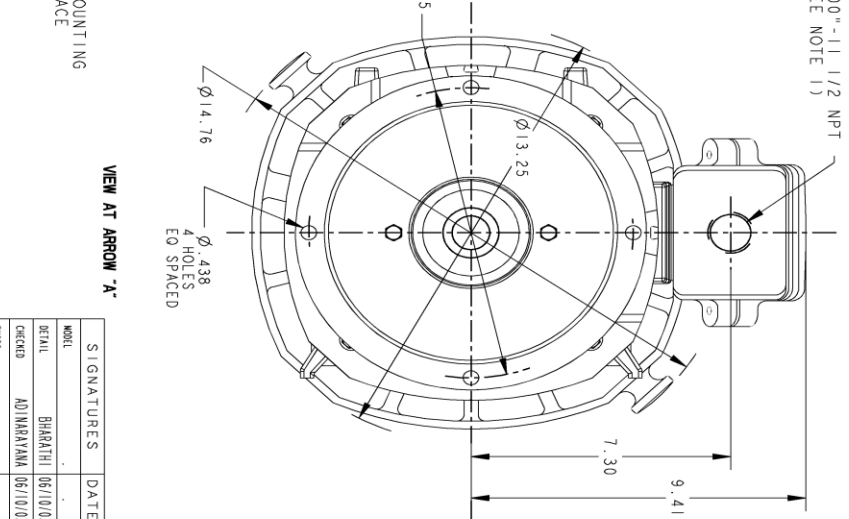
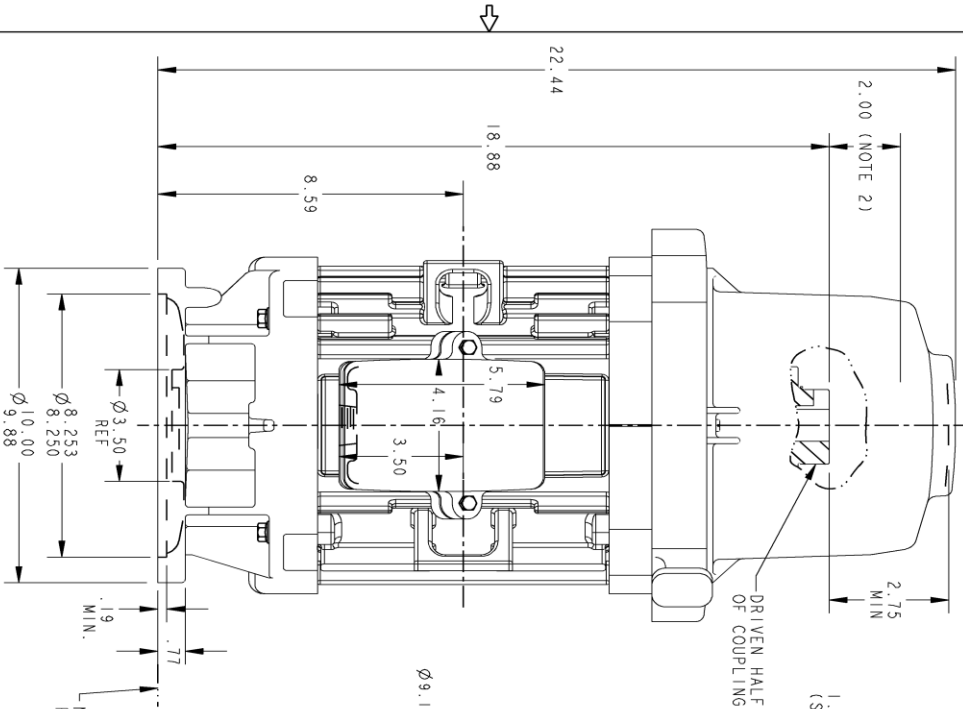
<b>Open Circuit A-C:</b>	0.446	<b>Short Circuit D-C:</b>	0.011
<b>Short Circuit A-C:</b>	0.02	<b>X/R Ratio:</b>	4.12
<b>Stator Slots:</b>	36	<b>Rotor Slots:</b>	26

**Speed Torque Current Curve (First Connection, First Speed)**



Marks:

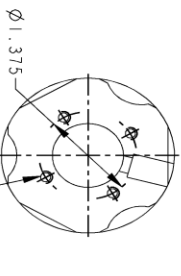
NOTE 1: CONDUIT BOX MAY BE ASSEMBLED WITH ENTRANCE UP, DOWN, OR TO EITHER SIDE OF PUMP SHAFT & LOCKING NUT ABOVE TOP  
 NOTE 2: THE TOTAL HEIGHT OF PUMP SHAFT & LOCKING NUT ABOVE TOP OF COUPLING, MUST NOT EXCEED THIS DIMENSION.  
 NOTE 3: ALL DIMENSIONS ARE IN INCHES



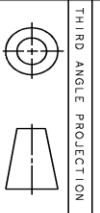
VIEW AT ARROW 'A'

PROPRIETARY INFORMATION  
 © COPYRIGHT 2018 Wolog Electric America LLC AND/OR ITS AFFILIATES  
 All rights reserved. This document and the information it contains is the property of Wolog Electric America LLC and/or its affiliates. It has been provided solely for the use of the customer and is not to be distributed, copied, or reproduced in any form without the express written consent of Wolog Electric America LLC. Wolog Electric America LLC is not responsible for any damage or injury resulting from the use of this information. Wolog Electric America LLC is not responsible for any damage or injury resulting from the use of this information. Wolog Electric America LLC is not responsible for any damage or injury resulting from the use of this information.

REV.	DESCRIPTION	DATE	APPROVED
1	ISAAC NO: #09-0117	02/12/09	RAGHU
2	ISAAC NO: #16-1067	12/28/16	RAVI
3	ISAAC #18-0869	10/23/18	SHAR



BORE DIA.	"B" X "	"W"	"D"
1.002			
1.001			
.939	.250		.125
.938			
.877			
.876			
.752	.188		.094
.751			
1.002			
1.001			
.939	.250		.125
.938			
.877			
.876			
.752	.188		.094
.751			



SIGNATURES	DATE
MODEL: BHARATHI	06/10/03
DETAIL: ADINARAYANA	06/10/03
ENGR: .	.
WEG: .	.
QUALITY: .	.
ISSUED: .	.
SOLID MODEL: MODEL NAME	

**GE INDUSTRIAL MOTORS**  
 a Wolog company

TITLE: INDUCTION MOTOR OUTLINE  
 FR210 WP-1 P- BASE VERTICAL  
 HOLLOW SHAFT - HIGH THRUST

SCALE: .3 REF. NO: .

4002B5821NMP5210  
 REV: 003

CIR (BDC10)  
 SHEET 1 OF 1

Marks:

**Connection Diagram**  
**GEM2034E-FIG3**



**Heater Connection**  
**3027JE-1C**



End shield Assembly		
Part Description	DE Side Part#	ODE Side Part#
End Shield	128D6024PA1	128D6025PA1
Bearing	235A2503EJ01	235A2503AA01
Slinger/Inproseal	235A2300FL1	

Fan & Fan Cover Assembly	
Part Description	Part#
Fan	
Fan Cover	

Conduit & Accessories Box Assembly	
Part Description	Part#
Conduit Box	4002B5721PA-G01

Mechanical Accessories	
Part Description	Part#
Brake	
Tachometer	

