



GE INDUSTRIAL MOTORS
a **WOLONG** company

Product Technical Information

November 23, 2020

Data shown is for the current revision model #. Ensure your nameplate model # matches.

Model Number:	5KS213DAE5044A
Catalog Number:	V4002
Instruction Manual:	GEK-95353
Connection Diagram:	GEM2034E-FIG3
Outline Drawing:	4002B5821NMP5210

Accessory Connection Diagrams

Bearing Thermocouple:	None	Heater:	3027JE-1C
RTD:	None	Thermistor:	None
Thermostat:	None	Winding Thermocouple:	None
Bearing RTD:	None		

Table of Contents

Specification	01
Performance Characteristics	02
Outline Drawing	03
Connection Drawing(s)	04
Spare parts	05

Marks:

MODEL NUMBER:	5KS213DAE5044A
Outline Drawing:	4002B5821NMP5210
Connection Diagram:	GEM2034E-FIG3
Instruction Book:	GEK-95353
Design Code:	21BD0093A
Type:	KS
Frame:	L213TP10
Phases:	3
Poles:	2
Output Power:	10HP 7.4KW
RPM:	3520
Voltage:	230/460
Hertz:	60
Amps - FL:	23.4/11.7
Service Factor:	1.15
Alt Service Factor:	--

Estimated Weight:	172 Lbs
Time Rating:	CONT
Enclosure:	WPI
Encl Construction:	OPEN
Ambient Max(°C):	40
Alt Ambient Max(°C):	--
Insulation Class:	H
NEMA Design:	B
Nominal Efficiency:	89.5 %
Guaranteed Efficiency:	87.5 %
3/4 Load Efficiency:	--
KVA Code:	H
Max KVAR:	2.1
Power Factor:	89.5
Bearing - DE:	7308
Bearing - ODE:	6208-2ZC3

Enclosure is Weather Protected One

Stamped Nameplate Notes:

PREMIUM EFFICIENT MOTOR
 NEMA ENCL WPI AND CSA ENCL DP
 ROT CCW FACING ODE LEAD/PH SEQUENCE 1-2-3/1-2-3
 HTR LDS HE1-HE2 115V 60W
 INVERTER DUTY PER NEMA MG1 PART 31
 ALTERNATE RATING FOR PWM CONTROL:
 1.0 SF VAR TORQUE RANGE 2.5-60 HZ
 SUITABLE FOR 7.5 HP, 190/380 V, 50 HZ
 WITH 21.2/10.6 AMPS AND 2930 RPM AT 1.00 SF



Additional Information:

2P - TP EXTN
C/BOX 55 CU IN-1.00 NPT
AUX LEADS EXIT WITH MOTOR LEADS
RCF 5000 CPM, STATIC DEFLECTION .0014 INCHES &
CENTER OF GRAVITY 8.59 INCHES
HOLLOW SHAFT HIGH THRUST
NON REV CPLG W/BX=1.00" KW=0.25"
OIL RESISTANT SLEEVING ON LEADS
BEARING LIFE 5788 HOURS AT 1900 LB THRUST
BEARING LIFE 8760 HOURS AT 1650 LB THRUST



Performance Characteristics

1st Winding 1st Connection

Design: 21BD0093A

Marks:

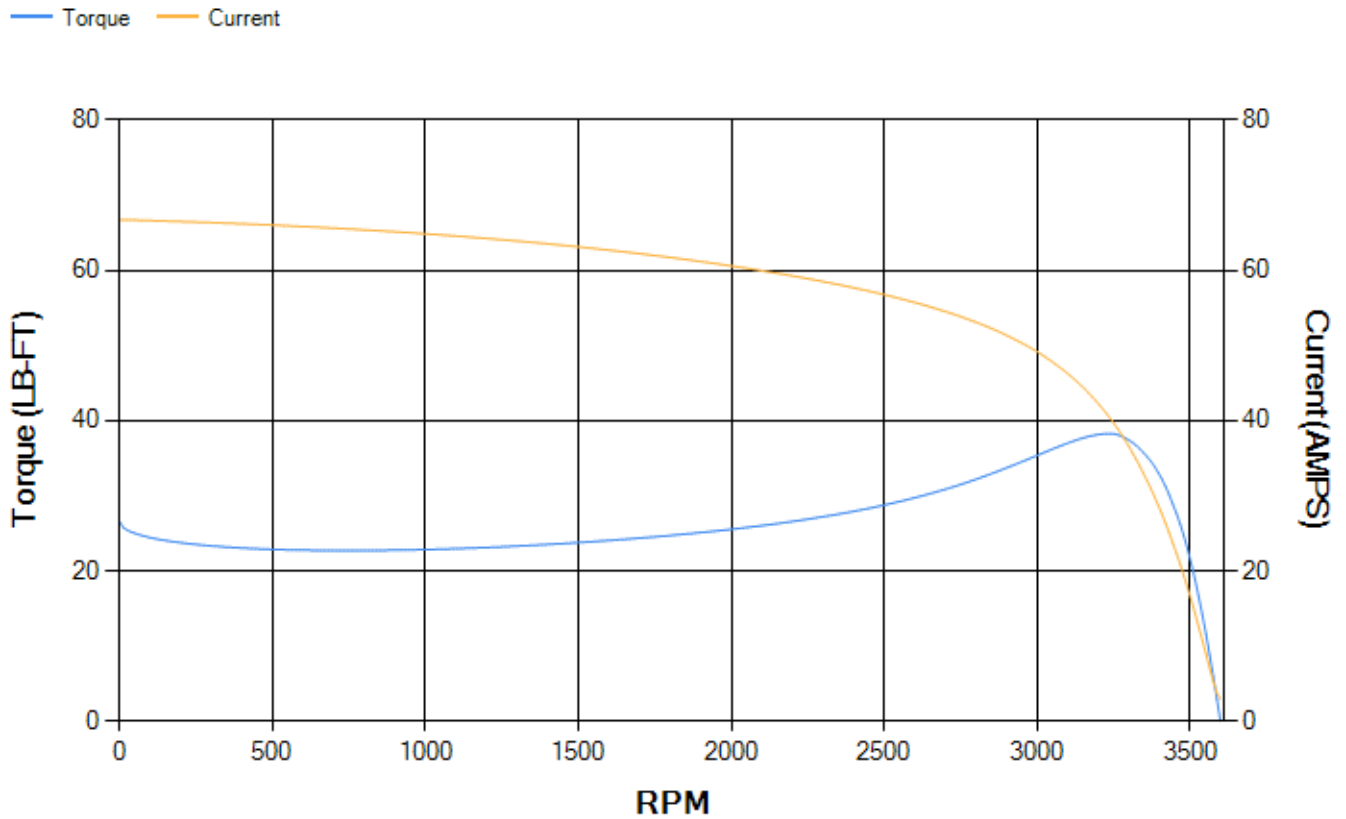
LOAD %	125.0	115.0	100.0	75.0	50.0	25.0	0.0
% EFF	88.28	89.04	90.2	91.1	91.2	88.09	0.00
% PF	89.44	89.62	89.53	87.95	82.59	64.92	8.74
AMPS	14.82	13.49	11.57	8.76	6.21	4.09	2.94

TORQ(FL)#FT	14.91	TORQ(LR)%FL	178.41	TORQ(BD)%FL	254.75
AMPS(LR)	66.76	PF AT START	0.36		

This motor is capable of two cold or one hot start with a maximum connected load inertia of 79 Lb-Ft Sq (3.33 Kg-meter Sq)at 100% voltage, where the load torque varies with the square of the speed. Acceleration time with maximum inertia and the above load type is 42 seconds. Safe stall time at 100% voltage is 72 seconds cold, 56 seconds hot. Rotor inertia is 0.36 Lb-Ft Sq (0.02 Kg-meter Sq).

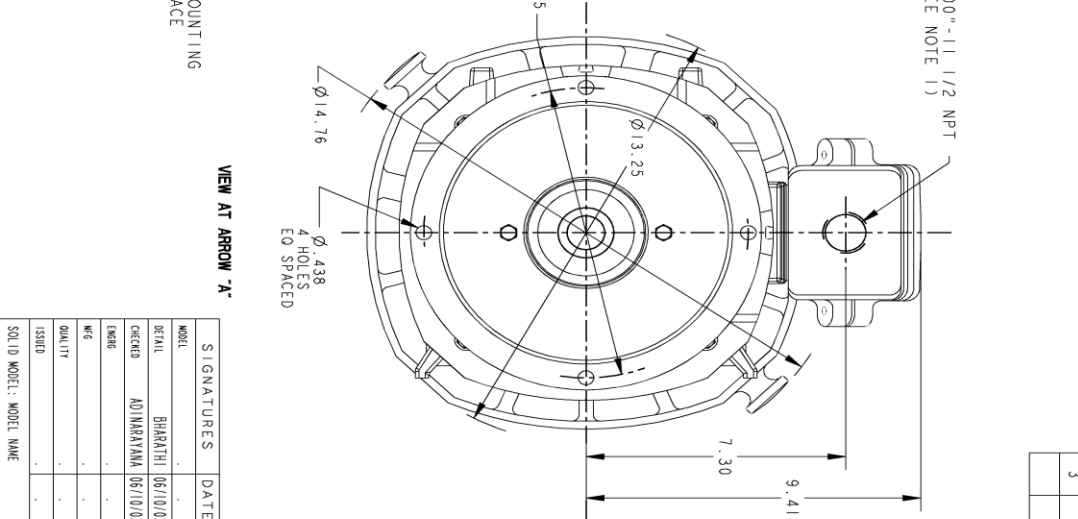
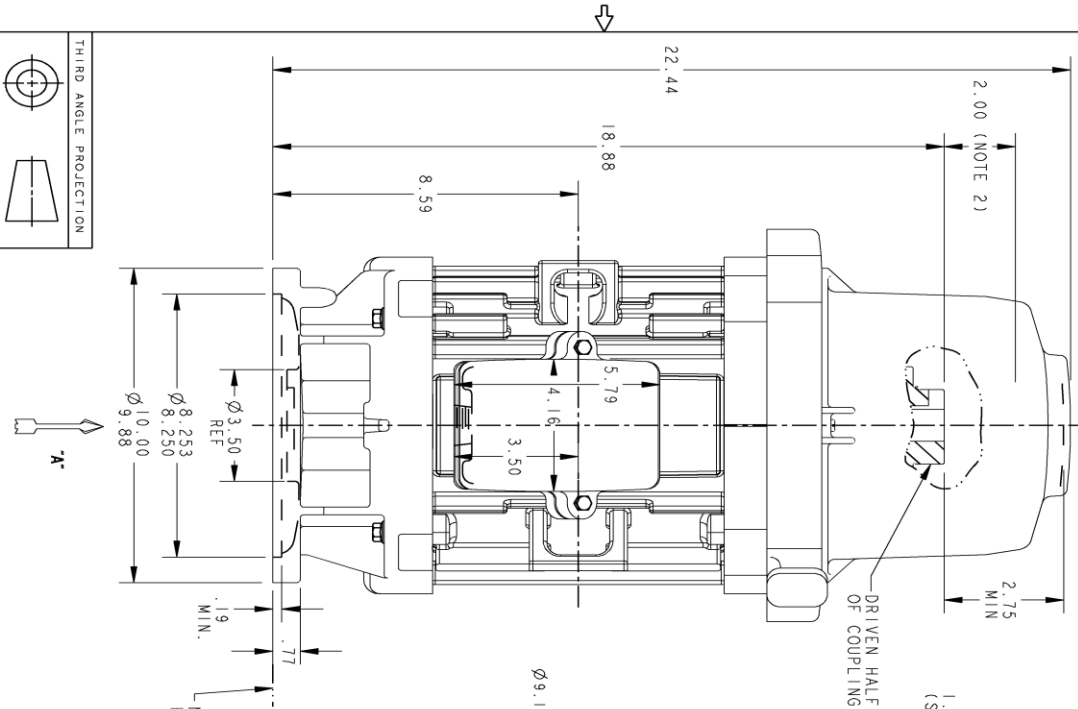
Open Circuit A-C:	0.49	Short Circuit D-C:	0.011
Short Circuit A-C:	0.019	X/R Ratio:	4.04
Stator Slots:	36	Rotor Slots:	26

Speed Torque Current Curve (First Connection, First Speed)



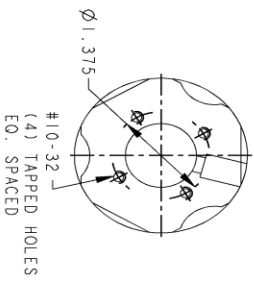
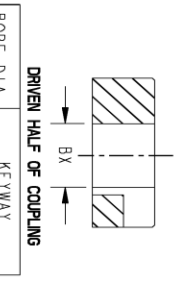
Marks:

NOTE 1: CONDUIT BOX MAY BE ASSEMBLED WITH ENTRANCE UP, DOWN, OR TO EITHER SIDE OF PUMP SHAFT & LOCKING NUT ABOVE TOP OF COUPLING.
 NOTE 2: THE TOTAL HEIGHT OF PUMP SHAFT & LOCKING NUT ABOVE TOP OF COUPLING, MUST NOT EXCEED THIS DIMENSION.
 NOTE 3: ALL DIMENSIONS ARE IN INCHES



SIGNATURES	DATE
MODEL: BHARATHI	06/10/03
DETAIL: ADINARAYANA	06/10/03
ENGR: .	.
WIG: .	.
QUALITY: .	.
ISSUED: .	.
SOLID MODEL: MODEL NAME	

BORE DIA.	"B" X "	"W"	"D"
1.002			
1.001			
.939	.250		.125
.938			
.877			
.876			
.752	.188		.094
.751			
1.002			
1.001			
.939	.250		.125
.938			
.877			
.876			
.752	.188		.094
.751			



PROPRIETARY INFORMATION
 © COPYRIGHT 2018 Wolog Electric America LLC AND/OR ITS AFFILIATES
 All rights reserved. This document and the information it contains is the property of Wolog Electric America LLC and/or its affiliates. It has been provided solely for the use of the customer and is not to be distributed, copied, or reproduced in any form without the written consent of Wolog Electric America LLC. Wolog Electric America LLC is not responsible for any damage or injury resulting from the use of this information. Wolog Electric America LLC is not responsible for any damage or injury resulting from the use of this information. Wolog Electric America LLC is not responsible for any damage or injury resulting from the use of this information.

REV.	DESCRIPTION	DATE	APPROVED
1	ISAAC NO: #09-0117	02/12/09	RAGHU
2	ISAAC NO: #16-1067	12/28/16	RAVI
3	ISAAC #18-0869	10/23/18	SHAR

THIRD ANGLE PROJECTION

VIEW AT ARROW 'A'

SCALE: .3

4002B5821NMP5210 003

DRIVEN HALF OF COUPLING

KEYWAY

DRIVEN HALF OF COUPLING

KEYWAY

DRIVEN HALF OF COUPLING

KEYWAY

GE INDUSTRIAL MOTORS

INDUCTION MOTOR OUTLINE

INDUCTION MOTOR OUTLINE

INDUCTION MOTOR OUTLINE

INDUCTION MOTOR OUTLINE

INDUCTION MOTOR OUTLINE

INDUCTION MOTOR OUTLINE

Marks:

Connection Diagram
GEM2034E-FIG3



Heater Connection
3027JE-1C



End shield Assembly		
Part Description	DE Side Part#	ODE Side Part#
End Shield	128D6024PA1	128D6025PA1
Bearing	235A2503EJ01	235A2503AA01
Slinger/Inproseal	235A2300FL1	

Fan & Fan Cover Assembly	
Part Description	Part#
Fan	
Fan Cover	

Conduit & Accessories Box Assembly	
Part Description	Part#
Conduit Box	4002B5721PA-G01

Mechanical Accessories	
Part Description	Part#
Brake	
Tachometer	

