



**GE INDUSTRIAL MOTORS**  
a **WOLONG** company

# Product Technical Information

November 25, 2020

Data shown is for the current revision model #. Ensure your nameplate model # matches.

<b>Model Number:</b>	<b>5KS256DAE5036A</b>
<b>Catalog Number:</b>	<b>V4005</b>
<b>Instruction Manual:</b>	GEK-95353
<b>Connection Diagram:</b>	GEM2034E-FIG9
<b>Outline Drawing:</b>	4002B5825NSP5212

## Accessory Connection Diagrams

<b>Bearing Thermocouple:</b>	None	<b>Heater:</b>	3027JE-1C
<b>RTD:</b>	None	<b>Thermistor:</b>	None
<b>Thermostat:</b>	None	<b>Winding Thermocouple:</b>	None
<b>Bearing RTD:</b>	None		

## Table of Contents

Specification	01
Performance Characteristics	02
Outline Drawing	03
Connection Drawing(s)	04
Spare parts	05

Marks:

<b>MODEL NUMBER:</b>	<b>5KS256DAE5036A</b>
<b>Outline Drawing:</b>	4002B5825NSP5212
<b>Connection Diagram:</b>	GEM2034E-FIG9
<b>Instruction Book:</b>	GEK-95353
<b>Design Code:</b>	25BD0073A
<b>Type:</b>	KS
<b>Frame:</b>	L256TP12
<b>Phases:</b>	3
<b>Poles:</b>	2
<b>Output Power:</b>	25HP 18.5KW
<b>RPM:</b>	3545
<b>Voltage:</b>	230/460
<b>Hertz:</b>	60
<b>Amps - FL:</b>	56.4/28.2
<b>Service Factor:</b>	1.15
<b>Alt Service Factor:</b>	--

<b>Estimated Weight:</b>	315 Lbs
<b>Time Rating:</b>	CONT
<b>Enclosure:</b>	WPI
<b>Encl Construction:</b>	OPEN
<b>Ambient Max(°C):</b>	40
<b>Alt Ambient Max(°C):</b>	--
<b>Insulation Class:</b>	H
<b>NEMA Design:</b>	B
<b>Nominal Efficiency:</b>	91.7 %
<b>Guaranteed Efficiency:</b>	90.2 %
<b>3/4 Load Efficiency:</b>	--
<b>KVA Code:</b>	G
<b>Max KVAR:</b>	3.2
<b>Power Factor:</b>	90.5
<b>Bearing - DE:</b>	7309
<b>Bearing - ODE:</b>	6209-2ZC3

Enclosure is Weather Protected One

---

**Stamped Nameplate Notes:**

PREMIUM EFFICIENT MOTOR  
 NEMA ENCL WPI AND CSA ENCL DP  
 ROT CCW FACING ODE LEAD/PH SEQUENCE 1-2-3/1-2-3  
 HTR LDS HE1-HE2 115V 60W  
 INVERTER DUTY PER NEMA MG1 PART 31  
 ALTERNATE RATING FOR PWM CONTROL:  
 1.0 SF VAR TORQUE RANGE 2.5-60 HZ  
 SUITABLE FOR 20HP, 190/380V,  
 50 HZ WITH 54.6/27.3AMPS AND 2950 RPM AT 1.0 SF



**Additional Information:**

2P - TP EXTN  
C/BOX 137 CU IN-1.25 NPT  
AUX LEADS EXIT WITH MOTOR LEADS  
RCF 5000 CPM, STATIC DEFLECTION .0014 INCHES &  
CENTER OF GRAVITY 10.75 INCHES  
HOLLOW SHAFT HIGH THRUST  
NON REV CPLG W/BX=1.00 KW=0.25  
OIL RESISTANT SLEEVING ON LEADS  
BEARING LIFE 4365 HOURS AT 2600 LB THRUST  
BEARING LIFE 8760 HOURS AT 2048 LB THRUST



**Performance Characteristics**

1st Winding 1st Connection

**Design: 25BD0073A**

**Marks:**

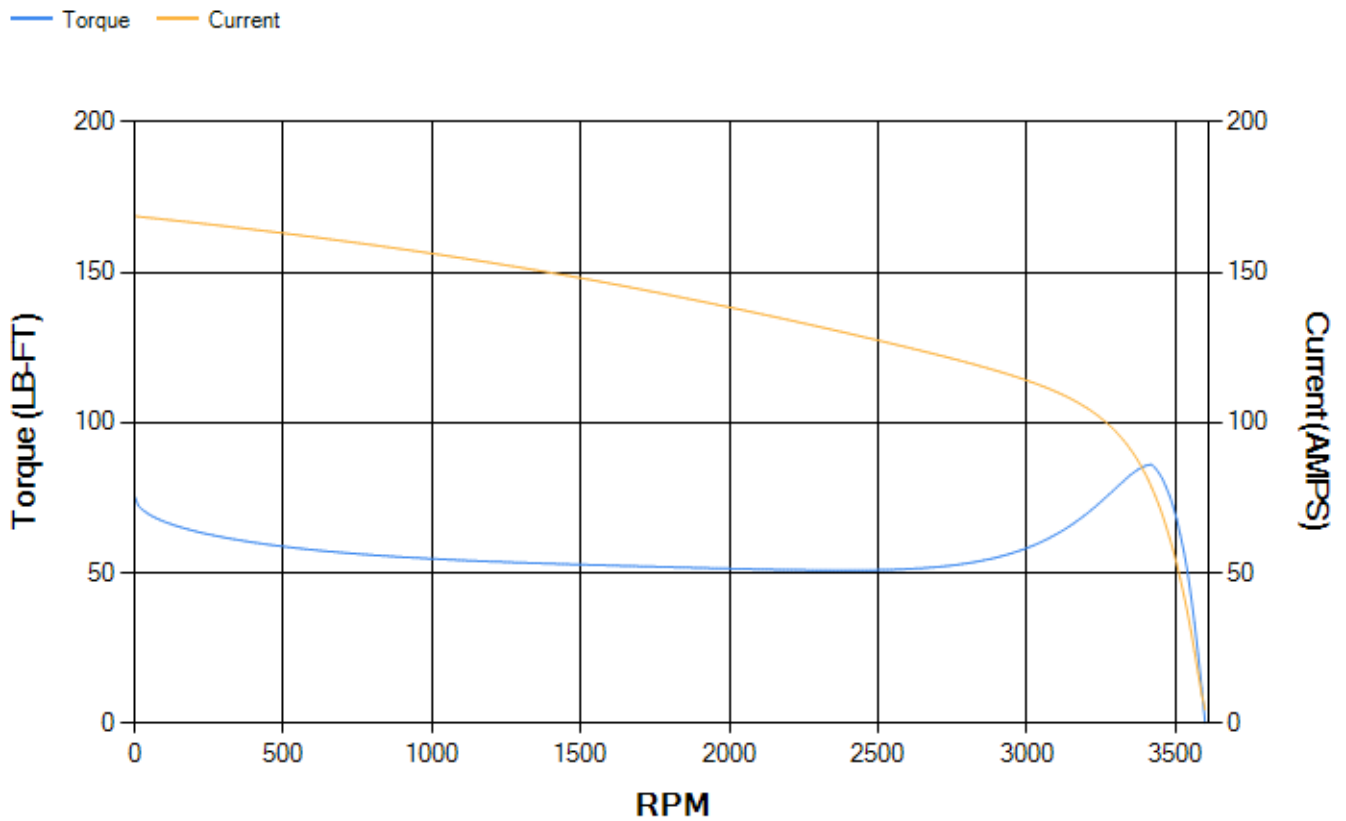
LOAD %	125.0	115.0	100.0	75.0	50.0	25.0	0.0
% EFF	89.46	90.37	91.7	92.87	93.46	91.84	0.00
% PF	88.22	89.26	90.32	90.87	88.95	78.06	8.99
AMPS	37.06	33.36	28.25	20.8	14.07	8.16	4.53

<b>TORQ(FL)#FT</b>	37.01	<b>TORQ(LR)%FL</b>	203.95	<b>TORQ(BD)%FL</b>	231.34
<b>AMPS(LR)</b>	168.72	<b>PF AT START</b>	0.33		

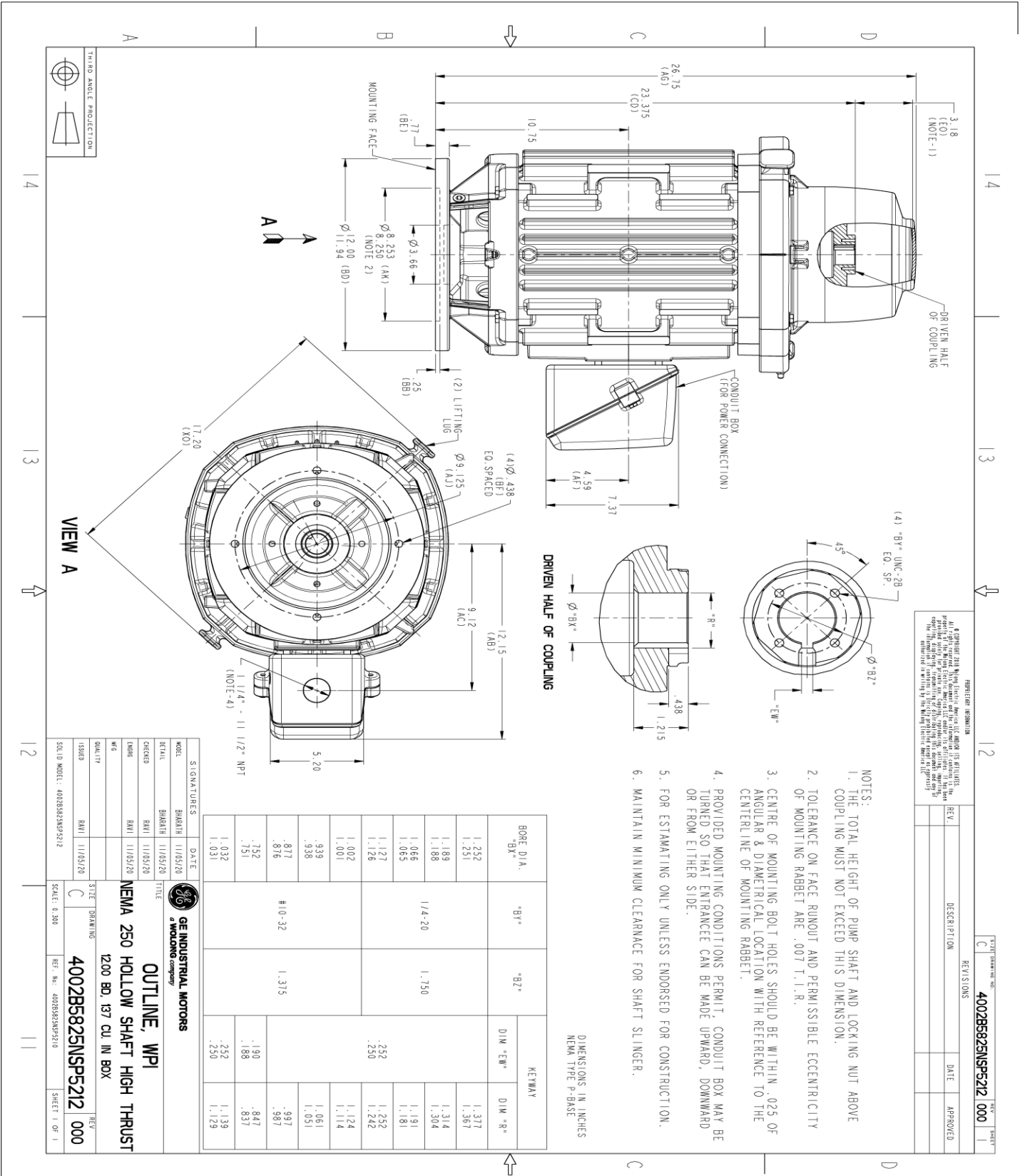
This motor is capable of two cold or one hot start with a maximum connected load inertia of 156 Lb-Ft Sq (6.57 Kg-meter Sq)at 100% voltage, where the load torque varies with the square of the speed. Acceleration time with maximum inertia and the above load type is 40 seconds. Safe stall time at 100% voltage is 69 seconds cold, 54 seconds hot. Rotor inertia is 1.56 Lb-Ft Sq (0.07 Kg-meter Sq).

<b>Open Circuit A-C:</b>	1.196	<b>Short Circuit D-C:</b>	0.013
<b>Short Circuit A-C:</b>	0.032	<b>X/R Ratio:</b>	5.049
<b>Stator Slots:</b>	36	<b>Rotor Slots:</b>	26

**Speed Torque Current Curve (First Connection, First Speed)**



Marks:



REPRODUCTION INFORMATION  
 It is prohibited to reproduce, copy, or disseminate any part of this drawing without the written permission of GE Industrial Motors. Any unauthorized reproduction or use of this drawing is strictly prohibited. The user of this drawing is responsible for its proper use and for any errors or omissions. GE Industrial Motors reserves the right to modify this drawing without notice.

REV.	DESCRIPTION	DATE	APPROVED

- NOTES:**
1. THE TOTAL HEIGHT OF PUMP SHAFT AND LOCKING NUT ABOVE COUPLING MUST NOT EXCEED THIS DIMENSION.
  2. TOLERANCE ON FACE RUNOUT AND PERMISSIBLE ECCENTRICITY OF MOUNTING RABBIT ARE .007 T.I.R.
  3. CENTRE OF MOUNTING BOLT HOLES SHOULD BE WITHIN .025 OF ANGULAR & DIAMETRICAL LOCATION WITH REFERENCE TO THE CENTERLINE OF MOUNTING RABBIT.
  4. PROVIDED MOUNTING CONDITIONS PERMIT, CONDUIT BOX MAY BE TURNED SO THAT ENTRANCE CAN BE MADE UPWARD, DOWNWARD OR FROM EITHER SIDE.
  5. FOR ESTIMATING ONLY UNLESS ENDORSED FOR CONSTRUCTION.
  6. MAINTAIN MINIMUM CLEARANCE FOR SHAFT SLINGER.

DIMENSIONS IN INCHES  
 NEMA TYPE P-BASE

BORE DIA. "BX"	"B1"	"B2"	KEYWAY	
			D1W "E"	D1W "R"
1.252				1.377
1.251				1.367
1.189				1.314
1.188	1/4-20	1.750		1.304
1.066				1.191
1.065				1.181
1.127			.252	1.252
1.126			.250	1.242
1.002				1.124
1.001				1.114
.939				1.061
.938				1.051
.877		1.375		.997
.876	#10-32			.987
.752			.190	.847
.751			.188	.837
1.032			.252	1.139
1.031			.250	1.129

SIGNATURES	DATE	GE INDUSTRIAL MOTORS
DESIGNER: BHARATH	11/05/20	 <b>GE INDUSTRIAL MOTORS</b> a WOLONG company
CHECKED: BHARATH	11/05/20	
DATE: BHARATH	11/05/20	
WKS: BHARATH	11/05/20	
QUALITY: BHARATH	11/05/20	
<b>OUTLINE, WPI</b> <b>NEMA 250 HOLLOW SHAFT HIGH THRUST</b> 1200 BD, 137 CU, IN BOX		
SIZE: DRAWING: <b>4002B5825NSP5212</b> SCALE: 0.300 REF. NO.: 4002B5825NSP5212		



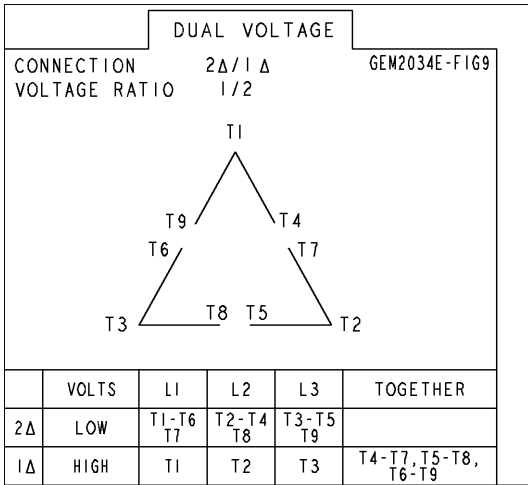
THIRD ANGLE PROJECTION

VIEW A

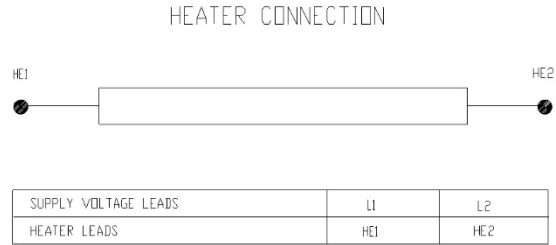
SHEET 1 OF 1

Marks:

**Connection Diagram**  
**GEM2034E-FIG9**



**Heater Connection**  
**3027JE-1C**



End shield Assembly		
Part Description	DE Side Part#	ODE Side Part#
End Shield	128D6125PA1	128D6128PA1
Bearing	235A2507AC01	235A2507EE01
Slinger/Inproseal	235A2300FL3	

Fan & Fan Cover Assembly	
Part Description	Part#
Fan	
Fan Cover	

Conduit & Accessories Box Assembly	
Part Description	Part#
Conduit Box	4002B5728PA-G04

Mechanical Accessories	
Part Description	Part#
Brake	
Tachometer	

