



GE INDUSTRIAL MOTORS
a **WOLONG** company

Product Technical Information

December 2, 2020

Data shown is for the current revision model #. Ensure your nameplate model # matches.

Model Number:	5KS213SAE5036A
Catalog Number:	V4023
Instruction Manual:	GEK-95351
Connection Diagram:	GEM2034E-FIG3
Outline Drawing:	4002B5821PMP5323

Accessory Connection Diagrams			
Bearing Thermocouple:	None	Heater:	3027JE-1C
RTD:	None	Thermistor:	None
Thermostat:	None	Winding Thermocouple:	None
Bearing RTD:	None		

Table of Contents

Specification	01
Performance Characteristics	02
Outline Drawing	03
Connection Drawing(s)	04
Spare parts	05

Marks:

MODEL NUMBER:	5KS213SAE5036A	Estimated Weight:	200 Lbs
Outline Drawing:	4002B5821PMP5323	Time Rating:	CONT
Connection Diagram:	GEM2034E-FIG3	Enclosure:	TEFC
Instruction Book:	GEK-95351	Encl Construction:	SD
Design Code:	21BD0074AA	Ambient Max(°C):	40
Type:	KS	Alt Ambient Max(°C):	65
Frame:	L213TP10	Insulation Class:	H
Phases:	3	NEMA Design:	B
Poles:	2	Nominal Efficiency:	89.5 %
Output Power:	7.5HP 5.6KW	Guaranteed Efficiency:	87.5 %
RPM:	3530	3/4 Load Efficiency:	--
Voltage:	230/460	KVA Code:	H
Hertz:	60	Max KVAR:	2.1
Amps - FL:	18.0/9.0	Power Factor:	87.5
Service Factor:	1.15	Bearing - DE:	7308
Alt Service Factor:	1.00	Bearing - ODE:	6208-2ZC3

Enclosure is Totally Enclosed Fan-Cooled

Stamped Nameplate Notes:

PREMIUM EFFICIENT MOTOR
 ROT CCW FACING ODE LEAD/PH SEQUENCE 1-2-3/1-2-3
 HTR LDS HE1-HE2 115V 60W
 SEVERE DUTY
 INVERTER DUTY PER NEMA MG1 PART 31
 ALTERNATE RATING FOR PWM CONTROL:
 1.0 SF VAR TORQUE RANGE 2.5-60 HZ
 50HZ DATA: 5HP 190/380 V WITH FLA-14.8/7.4 A



Additional Information:

2P - TP EXTN
C/BOX 55 CU IN-1.00 NPT
HEATER LEADS EXIT WITH MOTOR LEADS
E/SHLD GROUND STUD MTD ON DE C/BOX SIDE
RCF 5000 CPM, STATIC DEFLECTION .0014 INCHES &
CENTER OF GRAVITY 8.59 INCHES
HOLLOW SHAFT HIGH THRUST
NON REV CPLG W/BX=1.00 KW=0.25
OIL RESISTANT SLEEVING ON LEADS
BEARING LIFE 8760 HOURS AT 1663 LB THRUST



Performance Characteristics

1st Winding 1st Connection

Design: 21BD0074AA

Marks:

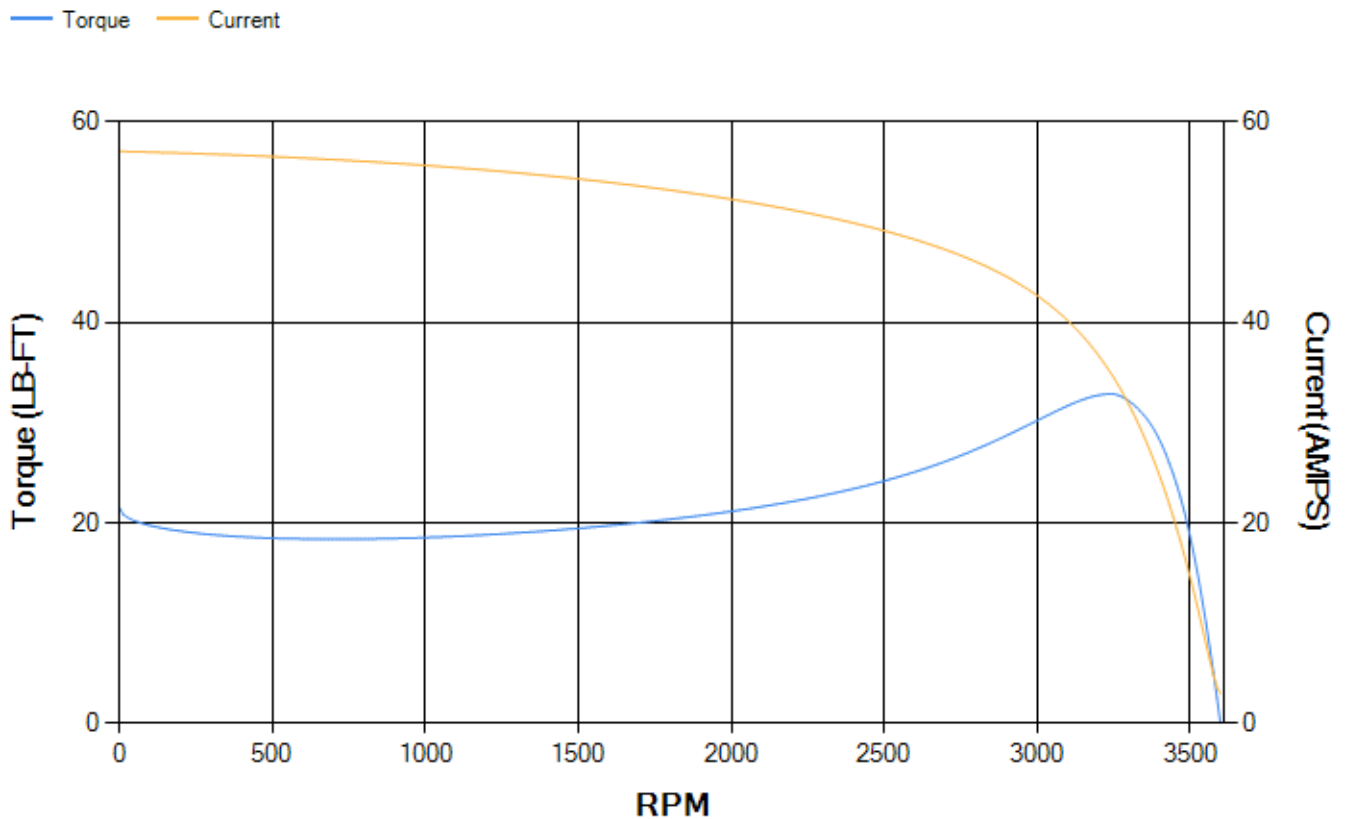
LOAD %	125.0	115.0	100.0	75.0	50.0	25.0	0.0
% EFF	88.4	88.93	89.77	90.08	89.34	84.42	0.00
% PF	88.52	88.26	87.44	84.3	76.45	56.1	9.34
AMPS	11.21	10.28	8.93	6.93	5.14	3.71	2.96

TORQ(FL)#FT	11.16	TORQ(LR)%FL	192.78	TORQ(BD)%FL	292.4
AMPS(LR)	57.09	PF AT START	0.36		

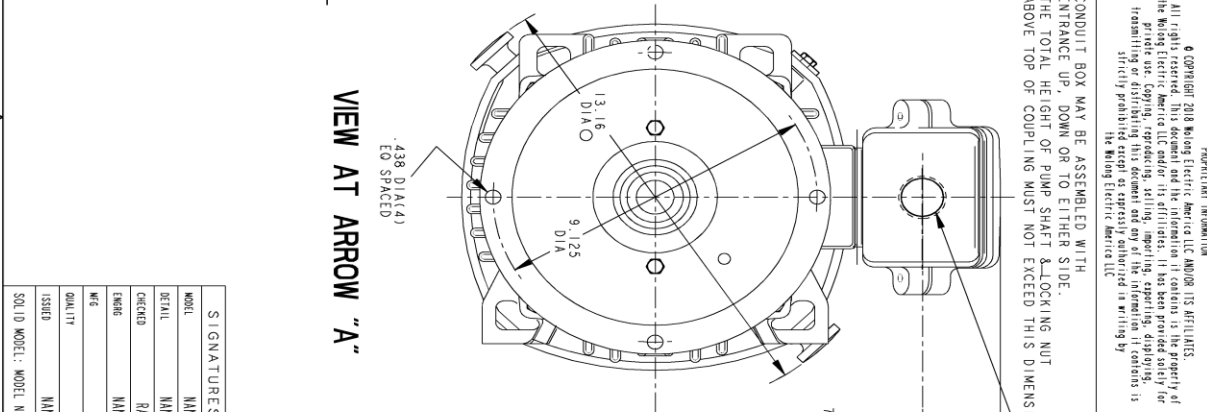
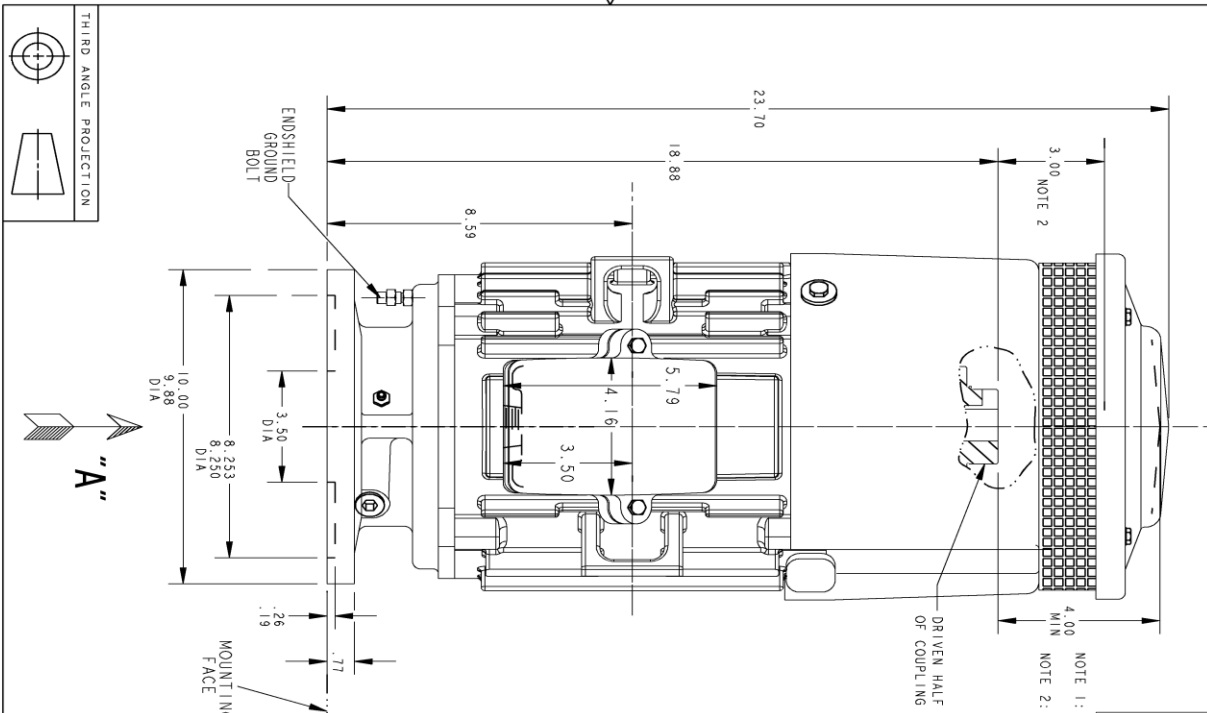
This motor is capable of two cold or one hot start with a maximum connected load inertia of 78 Lb-Ft Sq (3.28 Kg-meter Sq)at 100% voltage, where the load torque varies with the square of the speed. Acceleration time with maximum inertia and the above load type is 49 seconds. Safe stall time at 100% voltage is 85 seconds cold, 59 seconds hot. Rotor inertia is 0.31 Lb-Ft Sq (0.01 Kg-meter Sq).

Open Circuit A-C:	0.402	Short Circuit D-C:	0.01
Short Circuit A-C:	0.018	X/R Ratio:	3.858
Stator Slots:	36	Rotor Slots:	26

Speed Torque Current Curve (First Connection, First Speed)



Marks:



REV.	DESCRIPTION	DATE	APPROVED
1	ISSAC# 14-0928	11/14/14	VI JAY
2	ISSAC# 18-0869	11/02/18	PRASHANTH

POLES	BORE DIA.	"BY"	"W"	"D"
1	1.002	1.001		
2	.939	.938	.250	.125
3	.877	.876		
4	.752	.751	.188	.094
6	1.002	1.001		
7	.938	.938	.250	.125
8	.877	.876		
9	.752	.751	.188	.094

TITLE	DATE	SHEET
INDUCTION MOTOR OUTLINE	11/13/13	002
HOLLOW SHAFT-HIGH THRUST (B3-10), EXT ON DE SIDE		
FME: FR20 TFC "P" BASE VERTICAL		

GE INDUSTRIAL MOTORS
 a WOLONG company

SIGNATURES: MANCH (11/13/13) DATE: 11/13/13
 DETAIL: MANCH (11/13/13)
 CHECKED: MANCH (11/13/13)
 ENG: MANCH (11/13/13)
 QC: MANCH (11/13/13)
 ISSUED: MANCH (11/13/13)
 SOLID MODEL: MODEL NAME: SCALE: DRAWING: HGT: SCALE:

4002B5821PMP5323 002
 INDUCTION MOTOR OUTLINE
 HOLLOW SHAFT-HIGH THRUST (B3-10), EXT ON DE SIDE
 FME: FR20 TFC "P" BASE VERTICAL
 4002B5821PMP5323 002

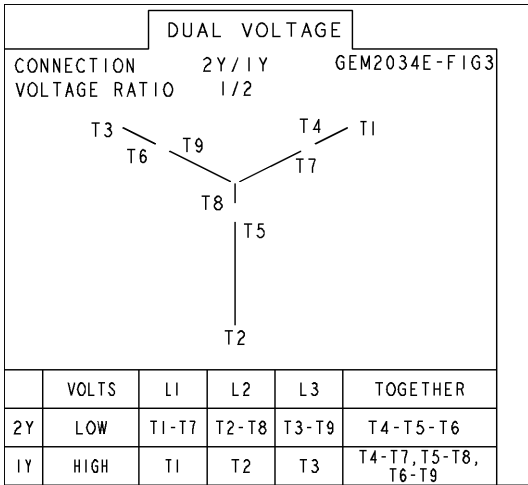
PROPRIETARY INFORMATION
 © COPYRIGHT 2018 Wolong Electric America LLC AND/OR ITS AFFILIATES.
 All rights reserved. This document and the information it contains is the property of
 the Wolong Electric America LLC and/or its affiliates. It has been provided solely for
 transmission of design information and is not to be used for any other purpose without
 the express written consent of Wolong Electric America LLC. Any other use or
 distribution of this information is strictly prohibited except as expressly authorized in writing by
 the Wolong Electric America LLC.

NOTE 1: CONDUIT BOX MAY BE ASSEMBLED WITH
 ENTRANCE UP, DOWN OR TO EITHER SIDE.
 NOTE 2: THE TOTAL HEIGHT OF PUMP SHAFT & LOCKING NUT
 ABOVE TOP OF COUPLING MUST NOT EXCEED THIS DIMENSION.
 (SEE NOTE 1)

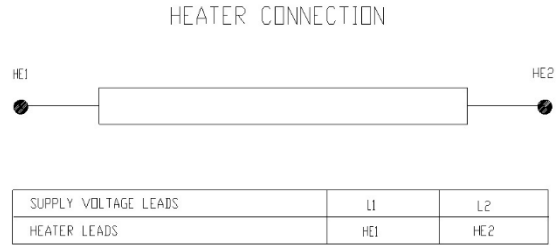
SIZE: DRAWING NO. 4002B5821PMP5323 002
 SHEET 1

Marks:

Connection Diagram
GEM2034E-FIG3



Heater Connection
3027JE-1C



End shield Assembly		
Part Description	DE Side Part#	ODE Side Part#
End Shield	128D6027PA1	128D6028PA1
Bearing	235A2503EJ01	235A2503AA01
Slinger/Inproseal	235A2300FL1	

Fan & Fan Cover Assembly	
Part Description	Part#
Fan	
Fan Cover	4003C5521AC-G01

Conduit & Accessories Box Assembly	
Part Description	Part#
Conduit Box	4002B5721PA-G01

Mechanical Accessories	
Part Description	Part#
Brake	
Tachometer	

