



**GE INDUSTRIAL MOTORS**  
a **WOLONG** company

# Product Technical Information

December 2, 2020

Data shown is for the current revision model #. Ensure your nameplate model # matches.

<b>Model Number:</b>	<b>5KS215SAE5027A</b>
<b>Catalog Number:</b>	<b>V4024</b>
<b>Instruction Manual:</b>	GEK-95351
<b>Connection Diagram:</b>	GEM2034E-FIG3
<b>Outline Drawing:</b>	4002B5821PMP5323

Accessory Connection Diagrams			
<b>Bearing Thermocouple:</b>	None	<b>Heater:</b>	3027JE-1C
<b>RTD:</b>	None	<b>Thermistor:</b>	None
<b>Thermostat:</b>	None	<b>Winding Thermocouple:</b>	None
<b>Bearing RTD:</b>	None		

## Table of Contents

Specification	01
Performance Characteristics	02
Outline Drawing	03
Connection Drawing(s)	04
Spare parts	05

Marks:

<b>MODEL NUMBER:</b>	<b>5KS215SAE5027A</b>	<b>Estimated Weight:</b>	220 Lbs
<b>Outline Drawing:</b>	4002B5821PMP5323	<b>Time Rating:</b>	CONT
<b>Connection Diagram:</b>	GEM2034E-FIG3	<b>Enclosure:</b>	TEFC
<b>Instruction Book:</b>	GEK-95351	<b>Encl Construction:</b>	SD
<b>Design Code:</b>	21BD0121A	<b>Ambient Max(°C):</b>	40
<b>Type:</b>	KS	<b>Alt Ambient Max(°C):</b>	65
<b>Frame:</b>	L215TP10	<b>Insulation Class:</b>	H
<b>Phases:</b>	3	<b>NEMA Design:</b>	B
<b>Poles:</b>	2	<b>Nominal Efficiency:</b>	90.2 %
<b>Output Power:</b>	10HP 7.4KW	<b>Guaranteed Efficiency:</b>	88.5 %
<b>RPM:</b>	3520	<b>3/4 Load Efficiency:</b>	--
<b>Voltage:</b>	230/460	<b>KVA Code:</b>	H
<b>Hertz:</b>	60	<b>Max KVAR:</b>	2.2
<b>Amps - FL:</b>	23.0/11.5	<b>Power Factor:</b>	90.0
<b>Service Factor:</b>	1.15	<b>Bearing - DE:</b>	7308
<b>Alt Service Factor:</b>	1.00	<b>Bearing - ODE:</b>	6208-2ZC3

Enclosure is Totally Enclosed Fan-Cooled

---

**Stamped Nameplate Notes:**

PREMIUM EFFICIENT MOTOR  
 ROT CCW FACING ODE LEAD/PH SEQUENCE 1-2-3/1-2-3  
 HTR LDS HE1-HE2 115V 60W  
 SEVERE DUTY  
 INVERTER DUTY PER NEMA MG1 PART 31  
 ALTERNATE RATING FOR PWM CONTROL:  
 1.0 SF VAR TORQUE RANGE 2.5-60 HZ  
 50HZ DATA:7.5 HP 190/380 V WITH FLA-21.0/10.5 A



**Additional Information:**

2P - TP EXTN  
C/BOX 55 CU IN-1.00 NPT  
HEATER LEADS EXIT WITH MOTOR LEADS  
E/SHLD GROUND STUD MTD ON DE C/BOX SIDE  
RCF 5000 CPM, STATIC DEFLECTION .0014 INCHES &  
CENTER OF GRAVITY 8.59 INCHES  
HOLLOW SHAFT HIGH THRUST  
NON REV CPLG W/BX=1.00" KW=0.25"  
OIL RESISTANT SLEEVING ON LEADS  
BEARING LIFE 8760 HOURS AT 1658 LB THRUST



**Performance Characteristics**

1st Winding 1st Connection

**Design: 21BD0121A**

**Marks:**

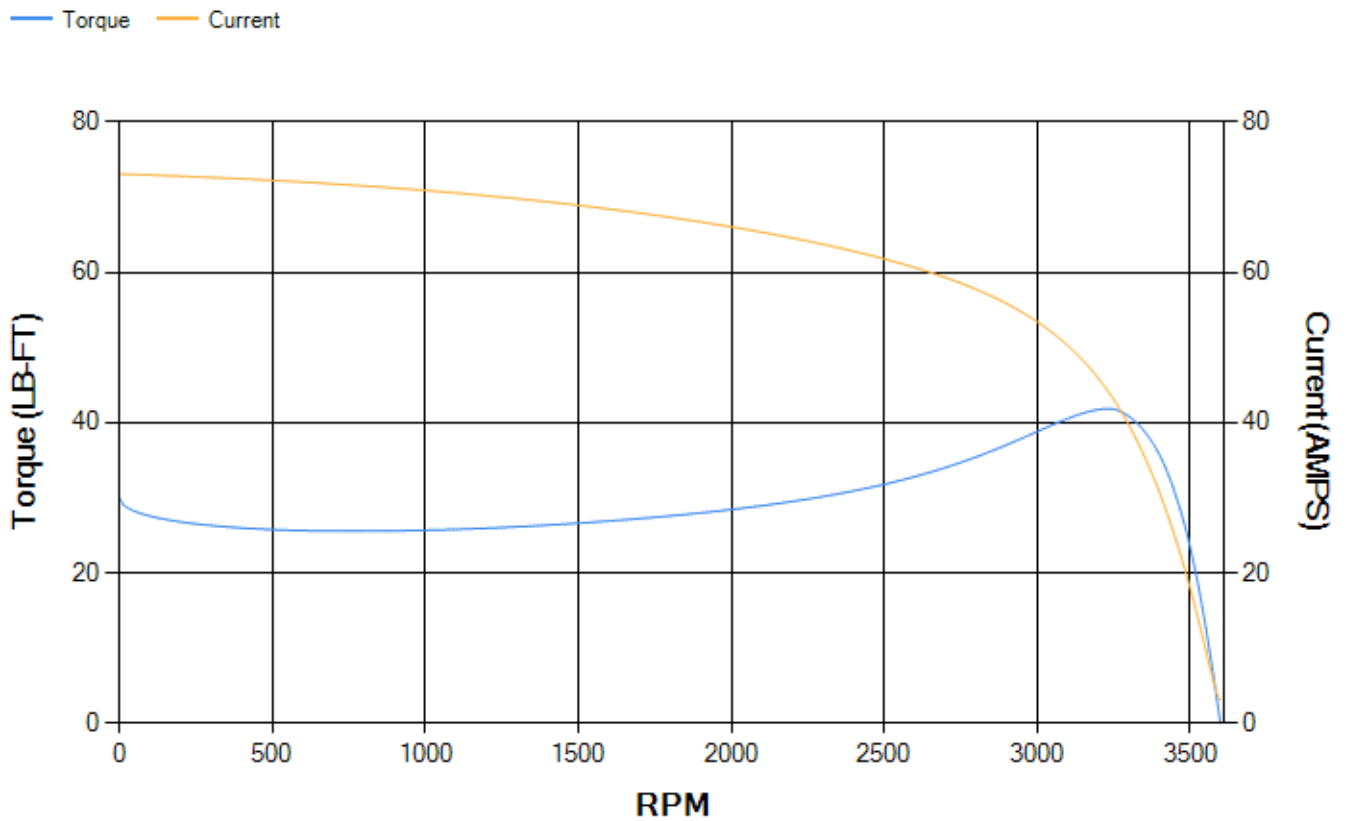
LOAD %	125.0	115.0	100.0	75.0	50.0	25.0	0.0
% EFF	88.6	89.26	90.31	91.03	90.91	87.39	0.00
% PF	89.96	90.02	89.75	87.9	82.21	64.19	9.16
AMPS	14.68	13.4	11.53	8.77	6.26	4.17	3.04

<b>TORQ(FL)#FT</b>	14.92	<b>TORQ(LR)%FL</b>	201.08	<b>TORQ(BD)%FL</b>	278.45
<b>AMPS(LR)</b>	73.1	<b>PF AT START</b>	0.36		

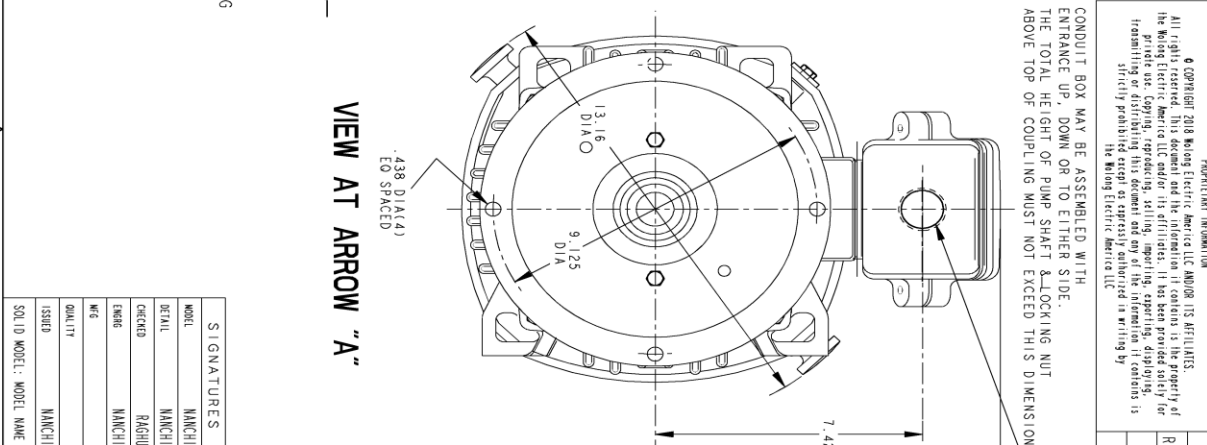
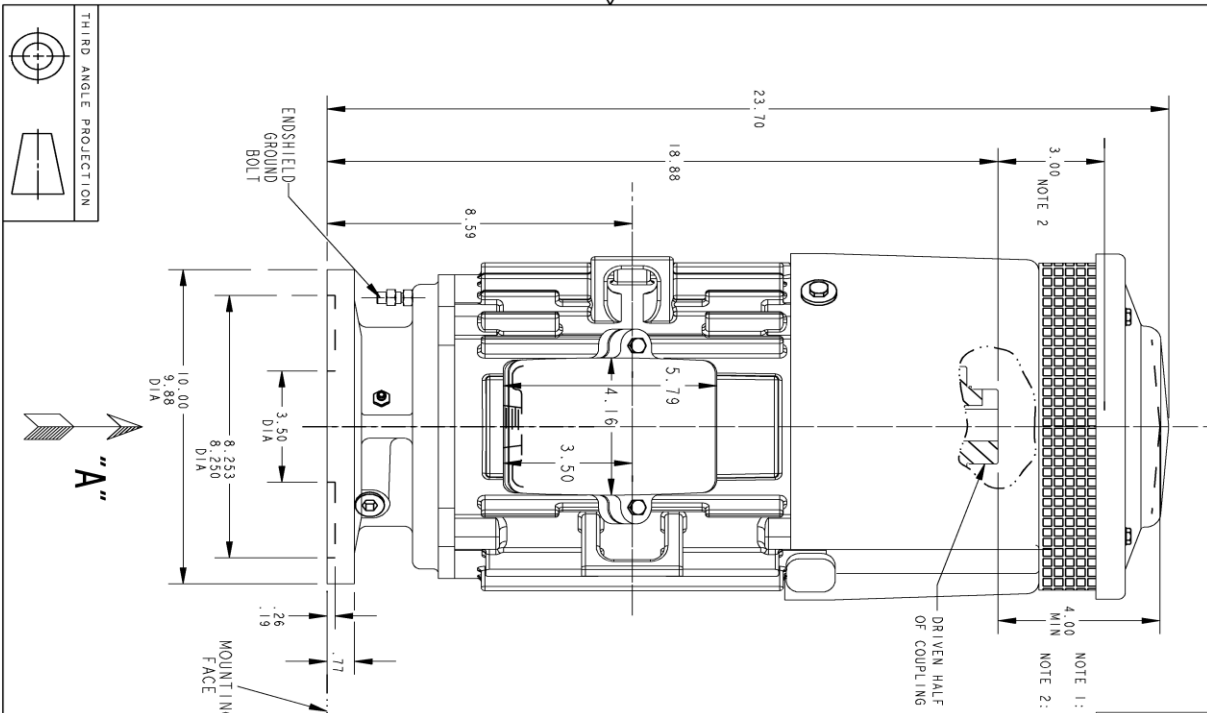
This motor is capable of two cold or one hot start with a maximum connected load inertia of 75 Lb-Ft Sq (3.16 Kg-meter Sq)at 100% voltage, where the load torque varies with the square of the speed. Acceleration time with maximum inertia and the above load type is 35 seconds. Safe stall time at 100% voltage is 67 seconds cold, 42 seconds hot. Rotor inertia is 0.39 Lb-Ft Sq (0.02 Kg-meter Sq).

<b>Open Circuit A-C:</b>	0.466	<b>Short Circuit D-C:</b>	0.01
<b>Short Circuit A-C:</b>	0.017	<b>X/R Ratio:</b>	3.897
<b>Stator Slots:</b>	36	<b>Rotor Slots:</b>	26

**Speed Torque Current Curve (First Connection, First Speed)**



Marks:



REV.	DESCRIPTION	DATE	APPROVED
1	ISSAC# 14-0928	11/14/14	VI JAY
2	ISSAC# 18-0869	11/02/18	PRASHANTH

COUPLING KIT	POLES	BORE DIA.	"BY"	"W"	"D"
4002B5521AC	2	1.002	.939	.250	.125
NON-REVERSE	3	.877	.876		
	4	.752	.751	.188	.094
	6	1.002	1.001		
	7	.938	.938	.250	.125
	8	.877	.876		
	9	.752	.751	.188	.094

SIGNATURES	DATE
MANCH	11/13/13
MANCH	11/13/13
MANCH	11/13/13
MANCH	11/13/13

TITLE	SCALE
INDUCTION MOTOR OUTLINE	DRAWN IN ESCAPE
HOLLOW SHAFT-HIGH THRUST (B3-10), EXT ON DE SIDE	
FME: FR20 TFC "P" BASE VERTICAL	

**GE INDUSTRIAL MOTORS**  
 a WOLONG company

SIZE DRAWING NO. **4002B5821PMP5323** REV. **002** SHEET **1** OF **1**

REVISIONS:

REV.	DESCRIPTION	DATE	APPROVED
1	ISSAC# 14-0928	11/14/14	VI JAY
2	ISSAC# 18-0869	11/02/18	PRASHANTH

TITLE: **INDUCTION MOTOR OUTLINE**  
 HOLLOW SHAFT-HIGH THRUST (B3-10), EXT ON DE SIDE  
 FME: FR20 TFC "P" BASE VERTICAL

SIZE DRAWING: **4002B5821PMP5323** REV. **002** SHEET **1** OF **1**

SCALE: DRAWN IN ESCAPE

NOTE 1: CONDUIT BOX MAY BE ASSEMBLED WITH ENTRANCE UP, DOWN OR TO EITHER SIDE.  
 NOTE 2: THE TOTAL HEIGHT OF PUMP SHAFT & LOCKING NUT ABOVE TOP OF COUPLING MUST NOT EXCEED THIS DIMENSION. (SEE NOTE 1)

PROPRIETARY INFORMATION  
 © COPYRIGHT 2018 Wolong Electric America LLC AND/OR ITS AFFILIATES.  
 All rights reserved. This document and the information it contains is the property of Wolong Electric America LLC and/or its affiliates. It has been provided solely for the use of the recipient and is not to be distributed, copied, or otherwise transmitted in any form or by any means, electronic or mechanical, including photocopying, recording, or by any information storage and retrieval system, without the prior written permission of Wolong Electric America LLC.

Marks:

**Connection Diagram**  
**GEM2034E-FIG3**



**Heater Connection**  
**3027JE-1C**



End shield Assembly		
Part Description	DE Side Part#	ODE Side Part#
End Shield	128D6027PA1	128D6028PA1
Bearing	235A2503EJ01	235A2503AA01
Slinger/Inproseal	235A2300FL1	

Fan & Fan Cover Assembly	
Part Description	Part#
Fan	
Fan Cover	4003C5521AC-G01

Conduit & Accessories Box Assembly	
Part Description	Part#
Conduit Box	4002B5721PA-G01

Mechanical Accessories	
Part Description	Part#
Brake	
Tachometer	

