



GE INDUSTRIAL MOTORS
a **WOLONG** company

Product Technical Information

December 5, 2020

Data shown is for the current revision model #. Ensure your nameplate model # matches.

Model Number:	5KS286SAE6061A
Catalog Number:	V4032
Instruction Manual:	GEK-95351
Connection Diagram:	GEM2034E-FIG9
Outline Drawing:	4002B5828PSP5335

Accessory Connection Diagrams

Bearing Thermocouple:	None	Heater:	3027JE-1C
RTD:	None	Thermistor:	None
Thermostat:	None	Winding Thermocouple:	None
Bearing RTD:	None		

Table of Contents

Specification	01
Performance Characteristics	02
Outline Drawing	03
Connection Drawing(s)	04
Spare parts	05

Marks:

MODEL NUMBER:	5KS286SAE6061A
Outline Drawing:	4002B5828PSP5335
Connection Diagram:	GEM2034E-FIG9
Instruction Book:	GEK-95351
Design Code:	28BD1157A
Type:	KS
Frame:	L286TP16
Phases:	3
Poles:	4
Output Power:	30HP 22.2KW
RPM:	1775
Voltage:	230/460
Hertz:	60
Amps - FL:	69.8/34.9
Service Factor:	1.15
Alt Service Factor:	1.00

Estimated Weight:	510 Lbs
Time Rating:	CONT
Enclosure:	TEFC
Encl Construction:	SD
Ambient Max(°C):	40
Alt Ambient Max(°C):	65
Insulation Class:	H
NEMA Design:	B
Nominal Efficiency:	93.6 %
Guaranteed Efficiency:	92.4 %
3/4 Load Efficiency:	--
KVA Code:	G
Max KVAR:	8.2
Power Factor:	86.0
Bearing - DE:	7310
Bearing - ODE:	6210-2ZC3

Enclosure is Totally Enclosed Fan-Cooled

Stamped Nameplate Notes:

PREMIUM EFFICIENT MOTOR
 ROT CCW FACING ODE LEAD/PH SEQUENCE 1-2-3/1-2-3
 HTR LDS HE1-HE2 115V 60W
 SEVERE DUTY
 INVERTER DUTY PER NEMA MG1 PART 31
 ALTERNATE RATING FOR PWM CONTROL:
 1.0 SF VAR TORQUE RANGE 5-60 HZ



Additional Information:

4P - TP EXTN
C/BOX 137 CU IN-1.50 NPT
HEATER LEADS EXIT WITH MOTOR LEADS
E/SHLD GROUND STUD MTD ON DE C/BOX SIDE
RCF 5000 CPM, STATIC DEFLECTION .0014 INCHES &
CENTER OF GRAVITY 12.00 INCHES
HOLLOW SHAFT HIGH THRUST
NON REV CPLG W/BX=1.00" KW=0.25"
OIL RESISTANT SLEEVING ON LEADS
BEARING LIFE 8760 HOURS AT 2959 LB THRUST



Performance Characteristics

1st Winding 1st Connection

Design: 28BD1157A

Marks:

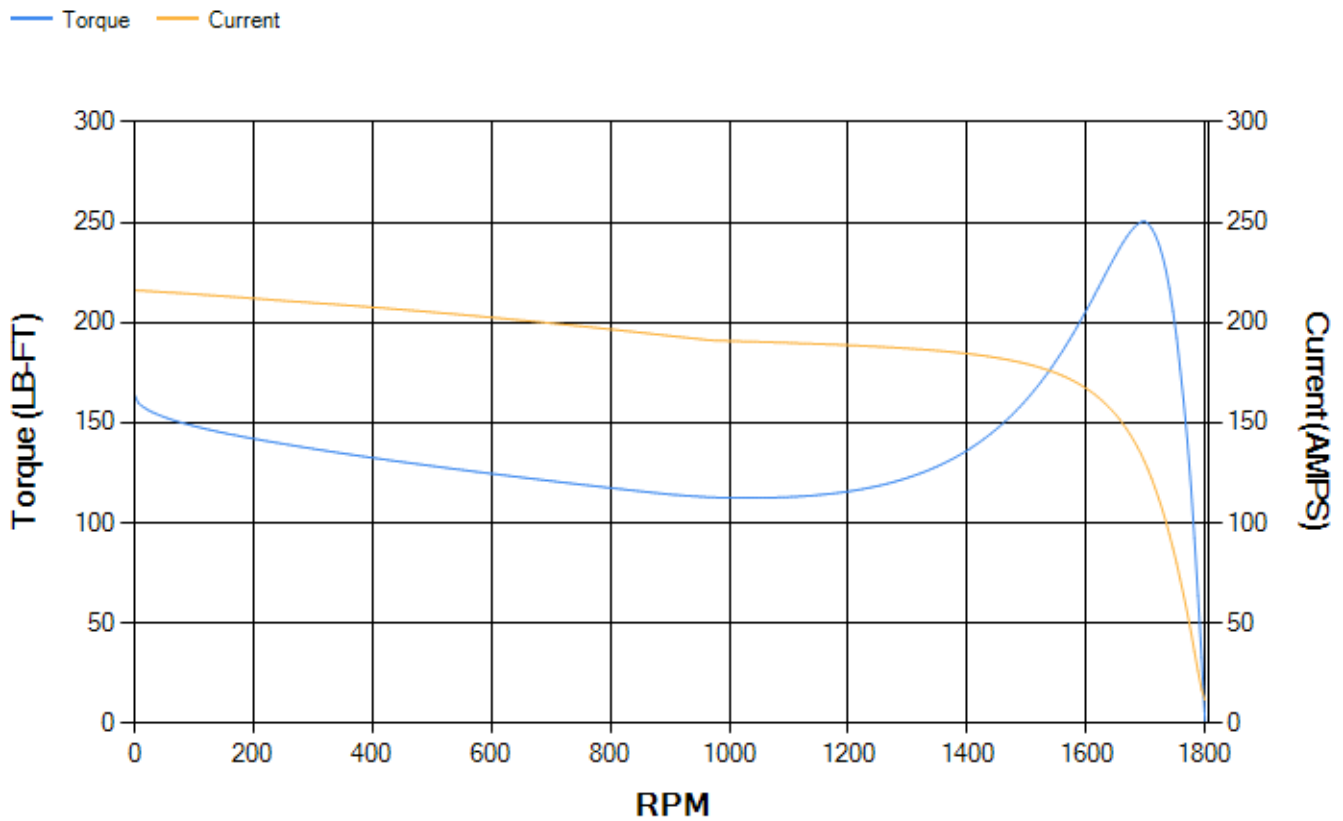
LOAD %	125.0	115.0	100.0	75.0	50.0	25.0	0.0
% EFF	92.5	92.93	93.68	94.1	94.05	91.74	0.00
% PF	86.91	86.73	86.02	82.95	74.96	53.68	4.49
AMPS	43.66	40.06	34.83	26.98	19.91	14.25	11.5

TORQ(FL)#FT	88.62	TORQ(LR)%FL	184.77	TORQ(BD)%FL	281.74
AMPS(LR)	216.09	PF AT START	0.38		

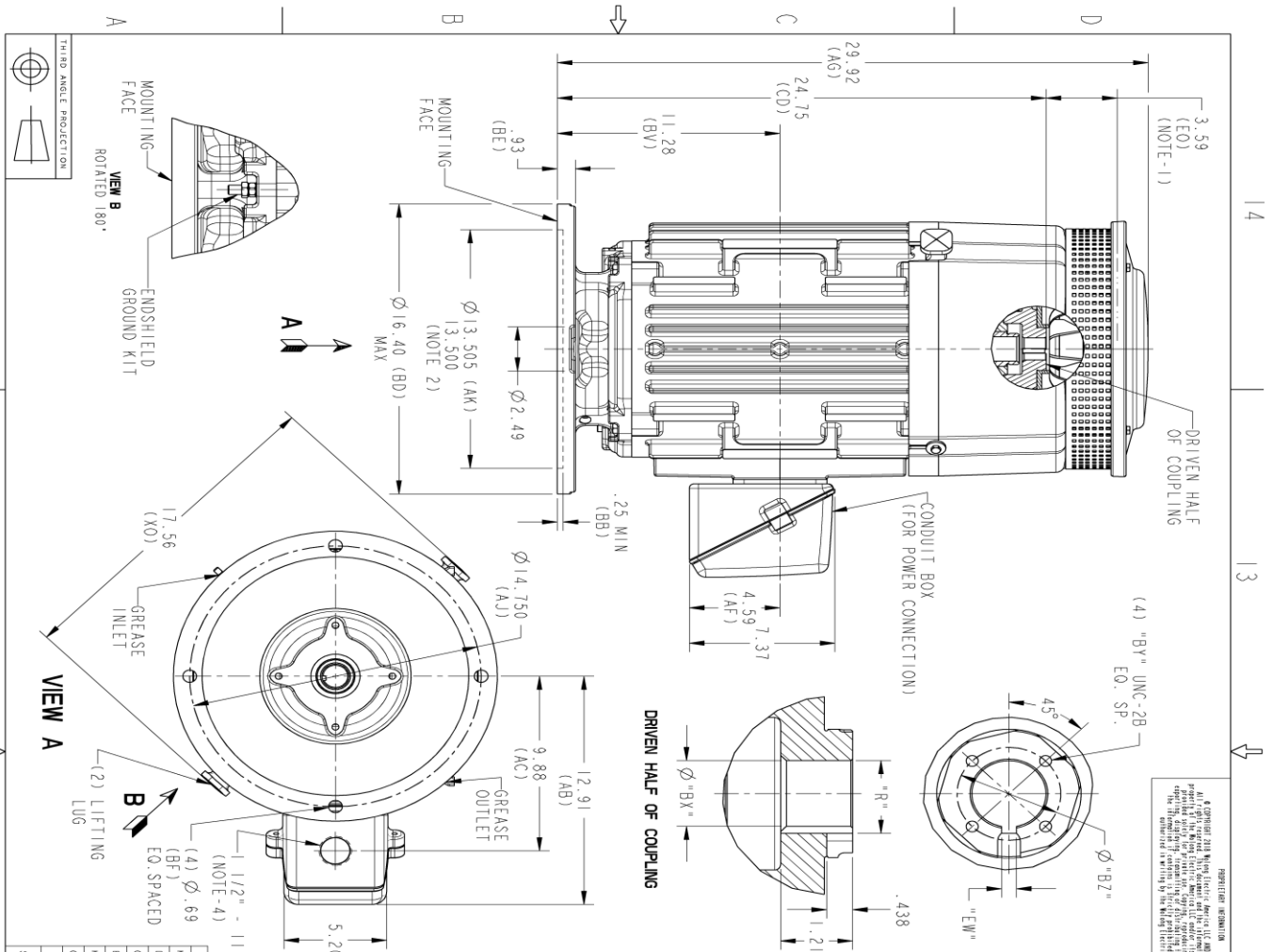
This motor is capable of two cold or one hot start with a maximum connected load inertia of 969 Lb-Ft Sq (40.79 Kg-meter Sq)at 100% voltage, where the load torque varies with the square of the speed. Acceleration time with maximum inertia and the above load type is 51 seconds. Safe stall time at 100% voltage is 90 seconds cold, 61 seconds hot. Rotor inertia is 5.39 Lb-Ft Sq (0.23 Kg-meter Sq).

Open Circuit A-C:	0.634	Short Circuit D-C:	0.016
Short Circuit A-C:	0.027	X/R Ratio:	5.921
Stator Slots:	48	Rotor Slots:	40

Speed Torque Current Curve (First Connection, First Speed)



Marks:



REGISTERED INFORMATION
© GEIPATENT 2018 World Intellectual Property Organization. All rights reserved. This document is the property of General Electric Company. It is to be used for the purpose and in the manner intended by General Electric Company. The design and/or appearance of this drawing is a registered trademark of General Electric Company. No part of this drawing may be reproduced without the prior written permission of General Electric Company.

REV.	DESCRIPTION	DATE	APPROVED

REV.	DATE	SIGNATURES

MODEL	DATE	TITLE
4002B5828PS5335	11/20/2020	OUTLINE, TEFC

BORE DIA.	"BX"	"BY"	"BZ"	DIM "EW"	DIM "R"
1.252					1.377
1.251					1.367
1.189					1.314
1.188		1/4-20	1.750		1.304
1.066					1.191
1.065					1.181
1.127				252	1.252
1.126				.250	1.242
1.002					1.124
1.001					1.114
.939					1.061
.938					1.051
.877		#10-32	1.375		.997
.876					.987
.752					.847
.751					.837
1.032				.250	1.139
1.031					1.129

DIMENSIONS IN INCHES
NEMA TYPE P-BASE

GE INDUSTRIAL MOTORS
a WOLONG company

1650 BD, 137 CU IN BOX, EXT

4002B5828PS5335

SCALE: 0.250

SIZE C DRAWING

REF. NO.: 4002B5828PS53211

SHEET 1 OF 1

Marks:

Connection Diagram
GEM2034E-FIG9



Heater Connection
3027JE-1C



End shield Assembly		
Part Description	DE Side Part#	ODE Side Part#
End Shield	128D6234AA1	128D6232PB1
Bearing	235A2508ET01	235A2508AK01
Slinger/Inproseal	235A2300FL2	

Fan & Fan Cover Assembly	
Part Description	Part#
Fan	
Fan Cover	4003C5528AE-G01

Conduit & Accessories Box Assembly	
Part Description	Part#
Conduit Box	4002B5728PA-G01

Mechanical Accessories	
Part Description	Part#
Brake	
Tachometer	

