



GE INDUSTRIAL MOTORS
a **WOLONG** company

Product Technical Information

February 17, 2023

Data shown is for the current revision model #. Ensure your nameplate model # matches.

Model Number:	5KS254DAE6055
Catalog Number:	V4035
Instruction Manual:	GEK-95353
Connection Diagram:	GEM2034E-FIG9
Outline Drawing:	4002B5825NSP5210

Accessory Connection Diagrams

Bearing Thermocouple:	None	Heater:	3027JE-1C
RTD:	None	Thermistor:	None
Thermostat:	None	Winding Thermocouple:	None
Bearing RTD:	None		

Table of Contents

Specification	01
Performance Characteristics	02
Outline Drawing	03
Connection Drawing(s)	04
Spare parts	05

Marks:

MODEL NUMBER:	5KS254DAE6055	Estimated Weight:	280 Lbs
Outline Drawing:	4002B5825NSP5210	Time Rating:	CONT
Connection Diagram:	GEM2034E-FIG9	Enclosure:	WPI
Instruction Book:	GEK-95353	Encl Construction:	OPEN
Design Code:	25BD1120A	Ambient Max(°C):	40
Type:	KS	Alt Ambient Max(°C):	--
Frame:	L254TP10	Insulation Class:	H
Phases:	3	NEMA Design:	B
Poles:	4	Nominal Efficiency:	93.0 %
Output Power:	15HP 11.1KW	Guaranteed Efficiency:	91.7 %
RPM:	1775	3/4 Load Efficiency:	--
Voltage:	230/460	KVA Code:	G
Hertz:	60	Max KVAR:	4.9
Amps - FL:	36.0/18.0	Power Factor:	84.0
Service Factor:	1.15	Bearing - DE:	7309
Alt Service Factor:	--	Bearing - ODE:	6209-2ZC3

Enclosure is Weather Protected One

Stamped Nameplate Notes:

PREMIUM EFFICIENT MOTOR
 NEMA ENCL WPI AND CSA ENCL DP
 ROT CCW FACING ODE LEAD/PH SEQUENCE 1-2-3/1-2-3
 HTR LDS HE1-HE2 115V 60W
 INVERTER DUTY PER NEMA MG1 PART 31
 ALTERNATE RATING FOR PWM CONTROL:
 1.0 SF VAR TORQUE RANGE 5-60 HZ
 SUITABLE FOR 10HP, 190/380V,
 50 HZ WITH 29.8/14.9AMPS AND 1480 RPM AT 1.0 SF



Additional Information:

4P - TP EXTN
C/BOX 137 CU IN-1.25 NPT
AUX LEADS EXIT WITH MOTOR LEADS
RCF 5000 CPM, STATIC DEFLECTION .0014 INCHES &
CENTER OF GRAVITY 10.75 INCHES
HOLLOW SHAFT HIGH THRUST
NON REV CPLG W/BX=1.25" KW=0.25"
OIL RESISTANT SLEEVING ON LEADS
BEARING LIFE 8760 HOURS AT 2574 LB THRUST



Performance Characteristics

1st Winding 1st Connection

Design: 25BD1120A

Marks:

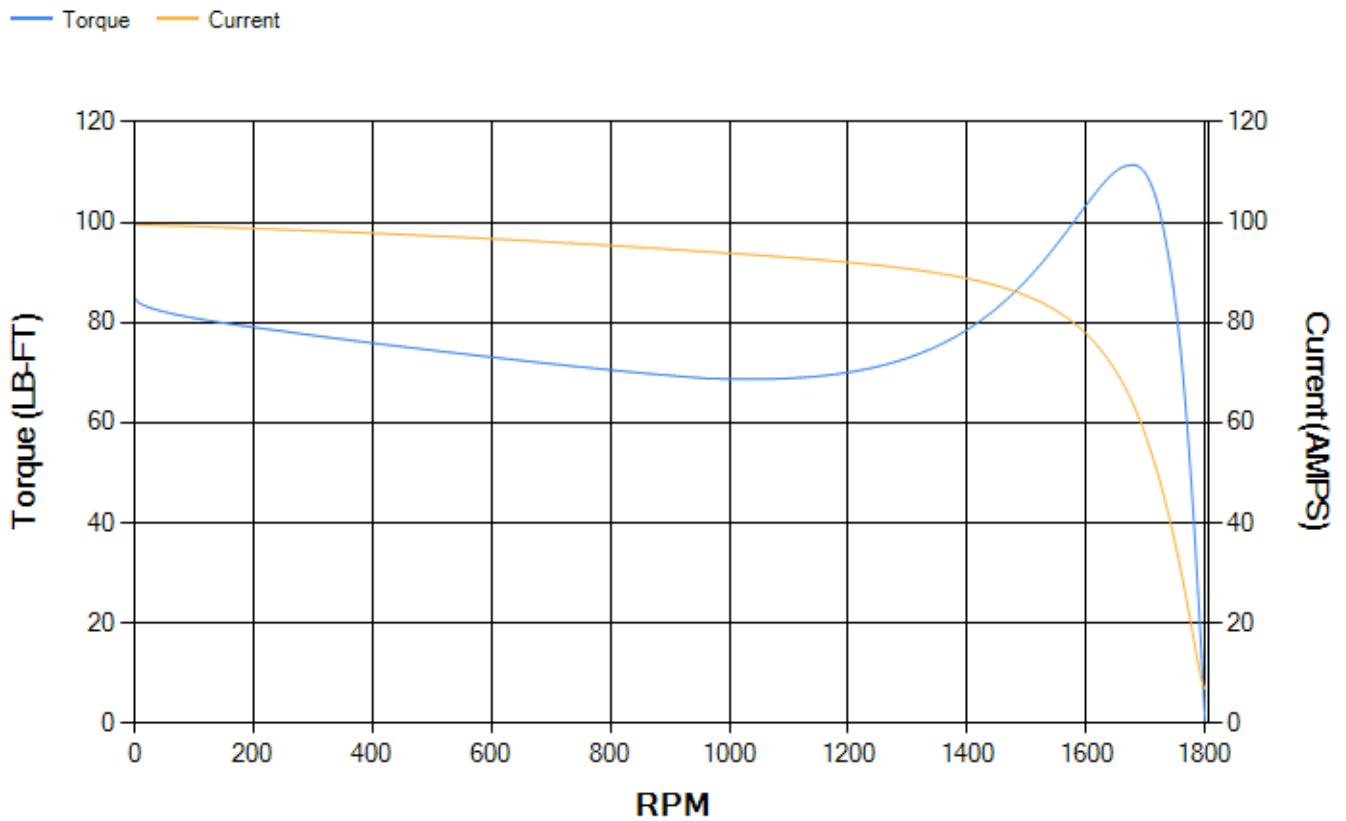
LOAD %	125.0	115.0	100.0	75.0	50.0	25.0	0.0
% EFF	92.04	92.45	93.16	93.46	93.19	90.22	0.00
% PF	85.57	85.17	84.04	80.02	70.62	48.52	4.76
AMPS	22.28	20.51	17.93	14.08	10.67	8.02	6.77

TORQ(FL)#FT	44.35	TORQ(LR)%FL	191.62	TORQ(BD)%FL	250.39
AMPS(LR)	99.56	PF AT START	0.45		

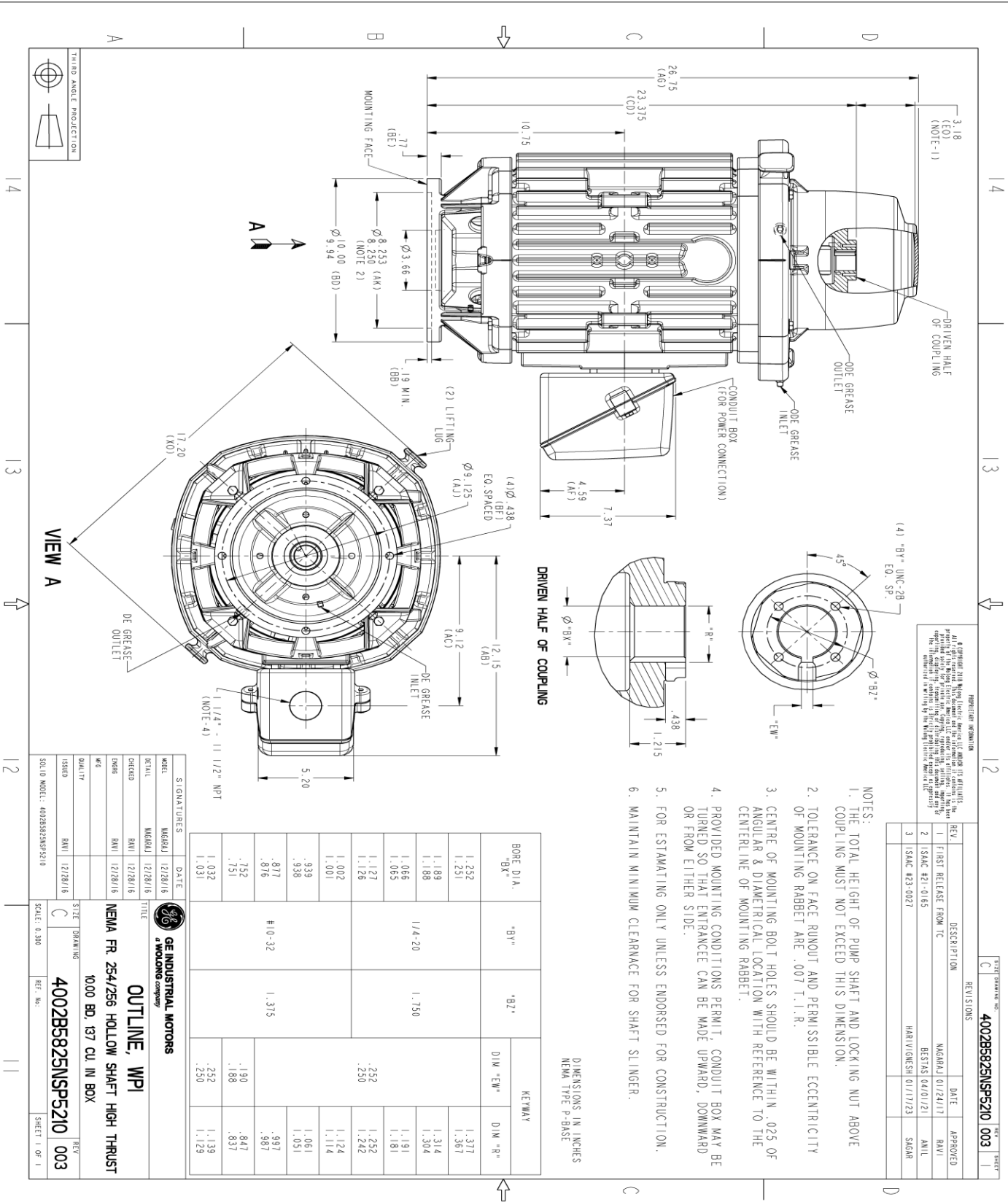
This motor is capable of two cold or one hot start with a maximum connected load inertia of 529 Lb-Ft Sq (22.27 Kg-meter Sq)at 100% voltage, where the load torque varies with the square of the speed. Acceleration time with maximum inertia and the above load type is 49 seconds. Safe stall time at 100% voltage is 108 seconds cold, 87 seconds hot. Rotor inertia is 2.29 Lb-Ft Sq (0.1 Kg-meter Sq).

Open Circuit A-C:	0.509	Short Circuit D-C:	0.014
Short Circuit A-C:	0.027	X/R Ratio:	5.15
Stator Slots:	48	Rotor Slots:	40

Speed Torque Current Curve (First Connection, First Speed)



Marks:



REVISION INFORMATION

REV.	DESCRIPTION	DATE	APPROVED
1	FIRST RELEASE FROM TC	MGRARJ 01/24/17	RAVI
2	ISAC #21-0155	BESTAS 04/01/21	ANIL
3	ISAC #23-0021	MAHVIQNSH 01/17/23	SAGR

BORE DIA. "BX"	"B7"	KEYWAY	
		D1W "E"	D1W "R"
1.252			1.377
1.251			1.367
1.189			1.314
1.188	1/4-20		1.304
1.066			1.191
1.065			1.181
1.127		.252	1.252
1.126		.250	1.242
1.002			1.124
1.001			1.114
.939			1.061
.877			.997
.876	#10-32		.987
.752		.190	.847
.751		.188	.837
1.032		.252	1.139
1.031		.250	1.129

SIGNATURES		DATE
MODEL	MGRARJ	12/28/16
REVISED	MGRARJ	12/28/16
CHECKED	RAVI	12/28/16
DRAWN	RAVI	12/28/16
DATE		
SCALE		
<p>GE INDUSTRIAL MOTORS a WOLONG company</p> <p>OUTLINE, WPI</p> <p>NEMA FR 254/256 HOLLOW SHAFT HIGH THRUST</p> <p>1000 BD. 137 CU. IN BOX</p>		
SIZE	DRAWING	REV
ISSUED	RAVI	12/28/16
SCALE	0.300	REF. NO.
4002B5825NSP5210		4002B5825NSP5210
SHEET 1 OF 1		

Marks:

Connection Diagram
GEM2034E-FIG9



Heater Connection
3027JE-1C



End shield Assembly		
Part Description	DE Side Part#	ODE Side Part#
End Shield	128D6124PA1	128D6128PA1
Bearing	235A2507AC01	235A2507EE01
Slinger/Inproseal	235A2300FL3	

Fan & Fan Cover Assembly	
Part Description	Part#
Fan	
Fan Cover	

Conduit & Accessories Box Assembly	
Part Description	Part#
Conduit Box	4002B5728PA-G04

Mechanical Accessories	
Part Description	Part#
Brake	
Tachometer	

