



GE INDUSTRIAL MOTORS
a **WOLONG** company

Product Technical Information

December 6, 2022

Data shown is for the current revision model #. Ensure your nameplate model # matches.

| | |
|----------------------------|----------------------|
| Model Number: | 5KS364DAJ6067 |
| Catalog Number: | V4045 |
| Instruction Manual: | GEI-M1045 |
| Connection Diagram: | GEM2034E-FIG19 |
| Outline Drawing: | 148CB36VMHKBCLA0001 |

Accessory Connection Diagrams

| | | | |
|------------------------------|-----------|------------------------------|-----------|
| Bearing Thermocouple: | None | Heater: | 3027JE-1C |
| RTD: | None | Thermistor: | None |
| Thermostat: | 3027JE-2A | Winding Thermocouple: | None |
| Bearing RTD: | None | | |

Table of Contents

| | |
|-----------------------------|----|
| Specification | 01 |
| Performance Characteristics | 02 |
| Outline Drawing | 03 |
| Connection Drawing(s) | 04 |
| Spare parts | 05 |

Marks:

| | | | |
|----------------------------|----------------------|-------------------------------|--------------|
| MODEL NUMBER: | 5KS364DAJ6067 | Estimated Weight: | 800 Lbs |
| Outline Drawing: | 148CB36VMHKBCLA0001 | Time Rating: | CONT |
| Connection Diagram: | GEM2034E-FIG19 | Enclosure: | WPI |
| Instruction Book: | GEI-M1045 | Encl Construction: | OPEN |
| Design Code: | 36BD1236AA | Ambient Max(°C): | 40 |
| Type: | KS | Alt Ambient Max(°C): | -- |
| Frame: | L364TP16 | Insulation Class: | H |
| Phases: | 3 | NEMA Design: | B |
| Poles: | 4 | Nominal Efficiency: | 95.0 % |
| Output Power: | 60HP 44.4KW | Guaranteed Efficiency: | 94.1 % |
| RPM: | 1785 | 3/4 Load Efficiency: | -- |
| Voltage: | 460 | KVA Code: | G |
| Hertz: | 60 | Max KVAR: | 22.3 |
| Amps - FL: | 73.4 | Power Factor: | 81.0 |
| Service Factor: | 1.15 | Bearing - DE: | 6212C3 |
| Alt Service Factor: | -- | Bearing - ODE: | 235A2523AD01 |

Enclosure is Weather Protected One

Stamped Nameplate Notes:

NEMA ENCLOSURE WP-I, CSA ENCL DP
HTR LDS HE1-HE2 115V 100W
ROT CCW FACING ODE LEAD/PH SEQ 1-2-3/1-2-3
THERMOSTAT LEADS TB1-TB2 TRIP
INVERTER DUTY PER NEMA MG1 PART 31
ALTERNATE RATING FOR PWM CONTROL:1.0SF 40C AMBIENT
VAR TORQUE RANGE 5 -60 HZ
UPPER BRG LUBE OIL: 3.7 QTS
AMB 0 TO 40 DEG C : ISO 32(MINERAL OR SYNTHETIC)
AMB -15 TO 0 DEG C : ISO 32 SYNTHETIC
SUITABLE FOR 50 HP, 380V, 50 HZ WITH
73.2 AMPS AND 1485 RPM AT 1.00 SF



Additional Information:

4P, VERT HOLLOW SHAFT HIGH THRUST (1D)
C/BOX 346 CU IN - 3.00" NPT
OIL RESISTANT SLEEVING ON LEADS
(3)N.C. CLASS F TRIP TSTAT LDS TO MAIN CONDUIT BOX
115V HTR LDS TO MAIN CONDUIT BOX
GROUND PAD
SHAFT GROUNDING RING MOUNTED ON DE BRG CAP
BEARING LIFE 8760 HRS AT 6244 LB THRUST
PART WINDING START
CG:15.23 IN FROM P-BASE FACE, STAT DEF:0.0033 IN
RCF:3300 CPM AT C/BOX SIDE, 3270 CPM AT
90 DEG FROM C/ BOX SIDE
NON-REVERSE BALL CARRIER,
BOLTED COUPLING, BX = 1.501 IN, EW= 0.375 IN
FIRE PUMP MOTOR
SPECIAL BALANCE
SAME AS 5KS364DAJ6020 EXCEPT 1.50" BX, FIRE PUMP MOTOR



Performance Characteristics

1st Winding 1st Connection

Design: 36BD1236AA

Marks:

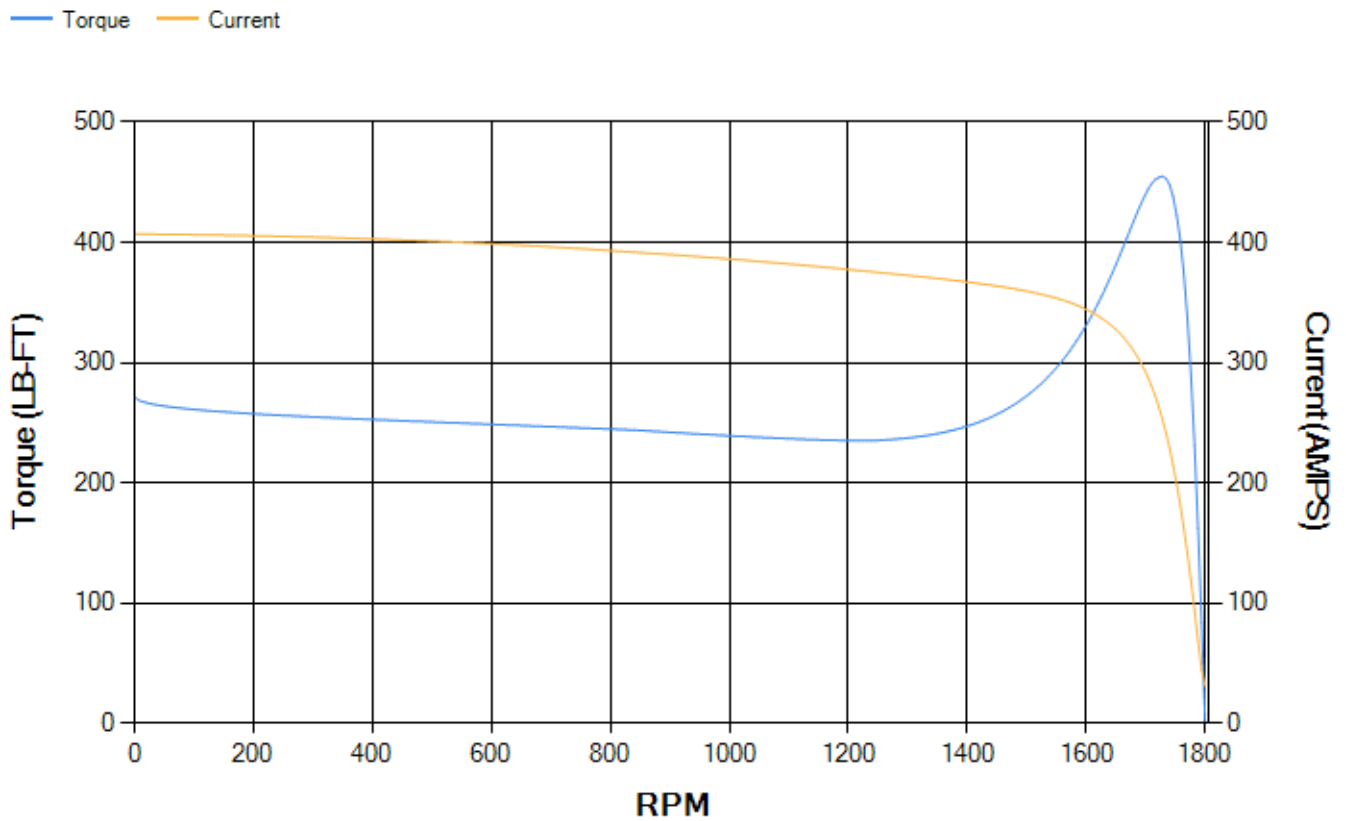
| LOAD % | 125.0 | 115.0 | 100.0 | 75.0 | 50.0 | 25.0 | 0.0 |
|--------|-------|-------|-------|-------|-------|-------|-------|
| % EFF | 94.1 | 94.29 | 94.69 | 94.53 | 93.81 | 90.35 | 0.00 |
| % PF | 83.31 | 82.68 | 81.16 | 76.27 | 65.76 | 43.46 | 4.06 |
| AMPS | 89.54 | 82.84 | 72.88 | 58.41 | 45.52 | 35.75 | 31.07 |

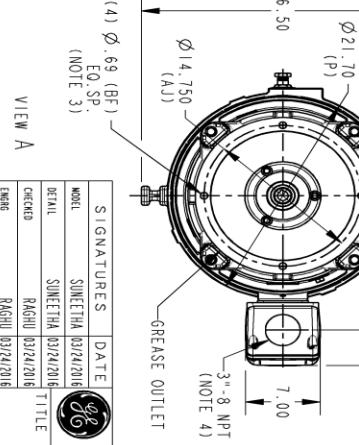
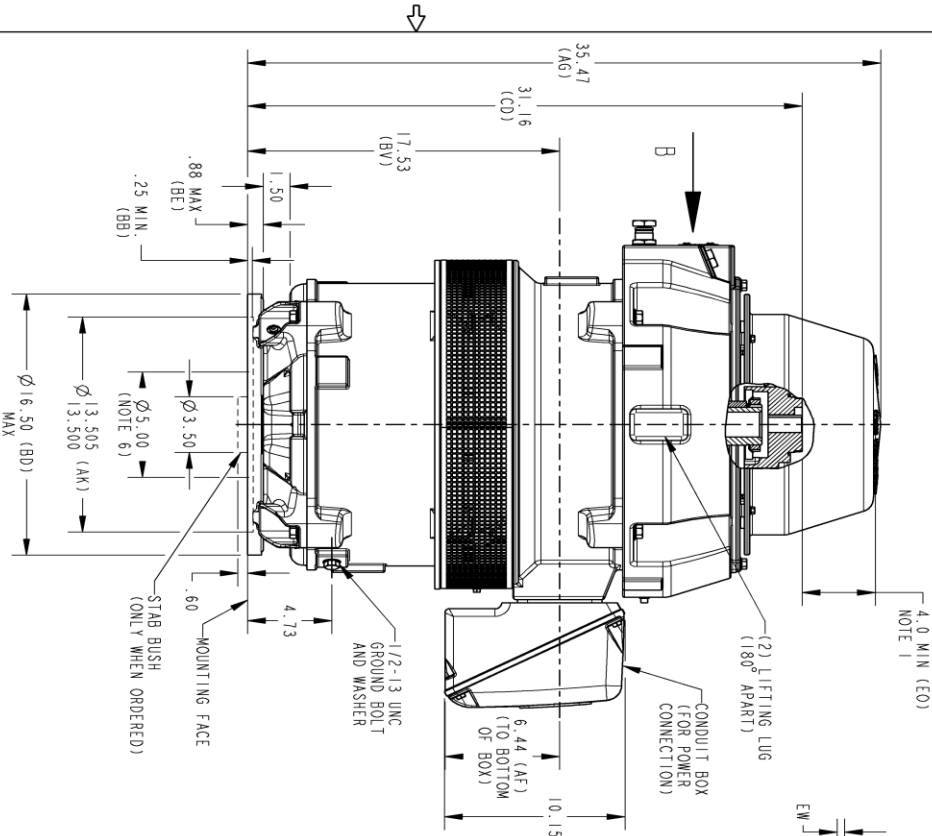
| | | | | | |
|--------------------|--------|--------------------|--------|--------------------|--------|
| TORQ(FL)#FT | 176.61 | TORQ(LR)%FL | 153.89 | TORQ(BD)%FL | 256.82 |
| AMPS(LR) | 406.96 | PF AT START | 0.3 | | |

This motor is capable of two cold or one hot start with a maximum connected load inertia of 1534 Lb-Ft Sq (64.58 Kg-meter Sq)at 100% voltage, where the load torque varies with the square of the speed. Acceleration time with maximum inertia and the above load type is 44 seconds. Safe stall time at 100% voltage is 74 seconds cold, 54 seconds hot. Rotor inertia is 11.09 Lb-Ft Sq (0.47 Kg-meter Sq).

| | | | |
|---------------------------|-------|---------------------------|-------|
| Open Circuit A-C: | 0.641 | Short Circuit D-C: | 0.026 |
| Short Circuit A-C: | 0.041 | X/R Ratio: | 9.689 |
| Stator Slots: | 60 | Rotor Slots: | 50 |

Speed Torque Current Curve (First Connection, First Speed)



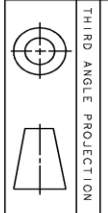


VIEW B

OIL SIGHT GAUGE
OIL FILLER
OIL DRAIN

DIMENSIONS IN INCHES
NEMA TYPE P BASE

| COUPLING DIMENSIONS | | | |
|---------------------|-------------------------|---------|------|
| BX | BY | KEY WAY | |
| | | EW | RM |
| 1.502-1.501 | 2.125 0.315 1.619/1.689 | .562 | .562 |
| 1.439-1.438 | 2.125 0.315 1.615/1.605 | .562 | .562 |
| 1.252-1.251 | 1.750 0.315 1.425/1.415 | .438 | .438 |
| 1.252-1.251 | 1.750 0.250 1.377/1.367 | .438 | .438 |
| 1.189-1.188 | 1.750 0.250 1.314/1.304 | .438 | .438 |
| 1.002-1.001 | 1.032 0.250 1.124/1.114 | .438 | .438 |



SIGNATURES

| NO. | SIGNATURE | DATE |
|-----|-----------|------------|
| 1 | SUNEETHA | 03/24/2016 |
| 2 | RAGHU | 03/24/2016 |
| 3 | RAGHU | 03/24/2016 |
| 4 | RADHA | 03/24/2016 |

GE INDUSTRIAL MOTORS
a WOLONG company

OUTLINE, WPI
NEMA 364/365 HOLLOW SHAFT, HIGH THRUST
650 BD, 346 CL IN C/BOX GROUND PAD

SCALE: 0.120 REF. NO. 148CB36VMHKVCLA0001 002

REVISIONS

| REV. | DESCRIPTION | DATE | APPROVED |
|------|---------------|------------|-----------|
| 1 | ISAC #17-0691 | 09/11/2017 | RAGHU |
| 2 | ISAC #18-0869 | 02/14/19 | PRASHANTH |

Marks:

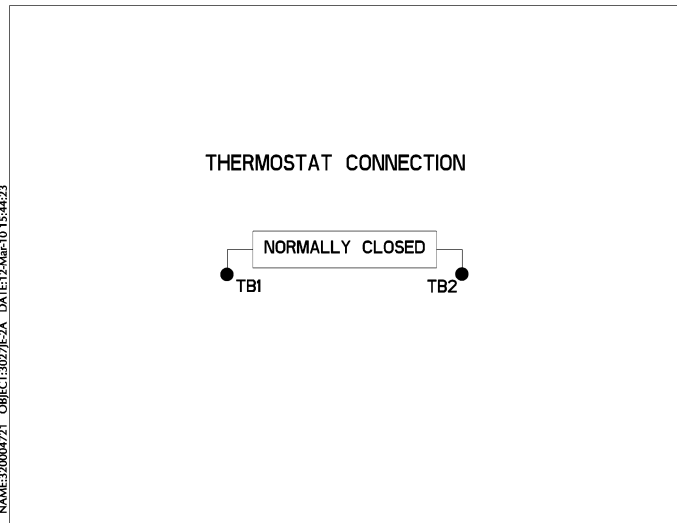
Connection Diagram
GEM2034E-FIG19



Heater Connection
3027JE-1C



Thermostat Connection
3027JE-2A



| End shield Assembly | | |
|---------------------|---------------|----------------|
| Part Description | DE Side Part# | ODE Side Part# |
| End Shield | 115E7255AA1 | 115E7259LK-G01 |
| Bearing | 235A2509BE01 | 235A2523AD01 |
| Slinger/Inproseal | 235A2300FM1 | |

| Fan & Fan Cover Assembly | |
|--------------------------|-------------|
| Part Description | Part# |
| Fan | |
| Fan Cover | 161C1053AA1 |

| Conduit & Accessories Box Assembly | |
|------------------------------------|-------------|
| Part Description | Part# |
| Conduit Box | 149C4429AA2 |

| Mechanical Accessories | |
|------------------------|-------|
| Part Description | Part# |
| Brake | |
| Tachometer | |

