



GE INDUSTRIAL MOTORS
a **WOLONG** company

Product Technical Information

February 17, 2023

Data shown is for the current revision model #. Ensure your nameplate model # matches.

Model Number:	5KS326DAJ6070
Catalog Number:	V4046
Instruction Manual:	GEI-M1045
Connection Diagram:	GEM2034E-FIG9
Outline Drawing:	148CB32VMHKBCLA0001

Accessory Connection Diagrams

Bearing Thermocouple:	None	Heater:	3027JE-1C
RTD:	None	Thermistor:	None
Thermostat:	3027JE-2A	Winding Thermocouple:	None
Bearing RTD:	None		

Table of Contents

Specification	01
Performance Characteristics	02
Outline Drawing	03
Connection Drawing(s)	04
Spare parts	05

Marks:

MODEL NUMBER:	5KS326DAJ6070	Estimated Weight:	740 Lbs
Outline Drawing:	148CB32VMHKBCLA0001	Time Rating:	CONT
Connection Diagram:	GEM2034E-FIG9	Enclosure:	WPI
Instruction Book:	GEI-M1045	Encl Construction:	OPEN
Design Code:	32BD1183AB	Ambient Max(°C):	40
Type:	KS	Alt Ambient Max(°C):	--
Frame:	L326TP16	Insulation Class:	H
Phases:	3	NEMA Design:	B
Poles:	4	Nominal Efficiency:	94.5 %
Output Power:	50HP 37KW	Guaranteed Efficiency:	93.6 %
RPM:	1780	3/4 Load Efficiency:	--
Voltage:	230/460	KVA Code:	G
Hertz:	60	Max KVAR:	17.7
Amps - FL:	122.0/61.0	Power Factor:	81.5
Service Factor:	1.15	Bearing - DE:	6212C3
Alt Service Factor:	--	Bearing - ODE:	235A2523AD01

Enclosure is Weather Protected One

Stamped Nameplate Notes:

NEMA ENCLOSURE WP-I, CSA ENCL DP
 HTR LDS HE1-HE2 115V 100W
 ROT CCW FACING ODE LEAD/PH SEQ 1-2-3/1-2-3
 THERMOSTAT LEADS TB1-TB2 TRIP
 INVERTER DUTY PER NEMA MG1 PART 31
 ALTERNATE RATING FOR PWM CONTROL:1.0SF 40C AMBIENT
 VAR TORQUE RANGE 5 -60 HZ
 UPPER BRG LUBE OIL: 2.1 QTS
 AMB 0 TO 40 DEG C : ISO 32(MINERAL OR SYNTHETIC)
 AMB -15 TO 0 DEG C : ISO 32 SYNTHETIC
 SUITABLE FOR 40 HP, 190/380V, 50 HZ WITH
 118.4/59.2 AMPS AND 1480 RPM AT 1.00 SF



Additional Information:

4P, VERT HOLLOW SHAFT HIGH THRUST (1D)
C/BOX 346 CU IN - 3.00" NPT
OIL RESISTANT SLEEVING ON LEADS
(3)N.C. CLASS F TRIP TSTAT LDS TO MAIN CONDUIT BOX
115V HTR LDS TO MAIN CONDUIT BOX
GROUND PAD
SHAFT GROUNDING RING MOUNTED ON DE BRG CAP
BEARING LIFE 8760 HRS AT 6324 LB THRUST
CG:13.86 IN FROM P-BASE FACE, STAT DEF:0.0025 IN
RCF:3600 CPM AT C/BOX SIDE, 3870 CPM AT
90 DEG FROM C/ BOX SIDE
NON-REVERSE BALL CARRIER,
BOLTED COUPLING, BX = 1.501 IN, EW= 0.375 IN
SPECIAL BALANCE
SAME AS 5KS326DAJ6020D EXCEPT 1.50" BX



Performance Characteristics

1st Winding 1st Connection

Design: 32BD1183AB

Marks:

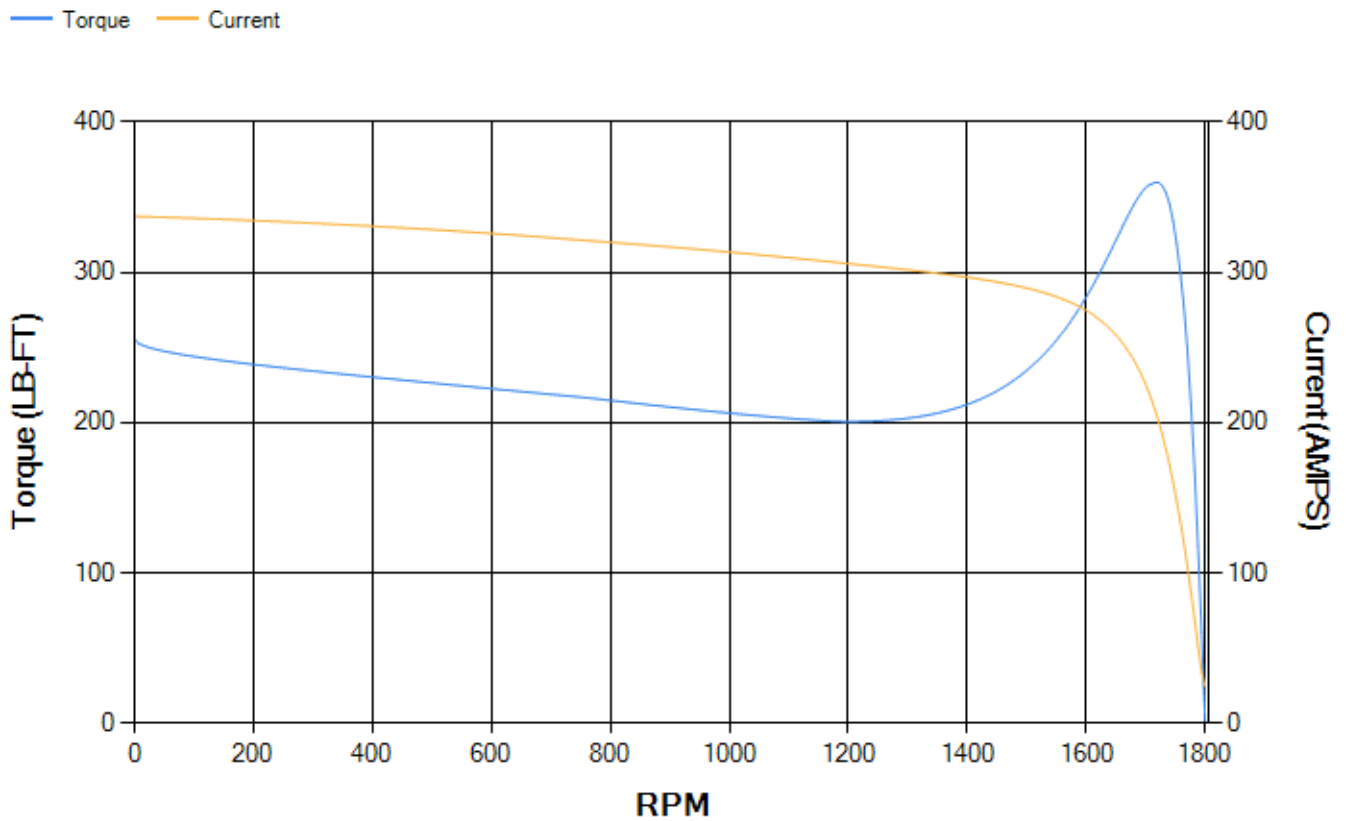
LOAD %	125.0	115.0	100.0	75.0	50.0	25.0	0.0
% EFF	93.76	94.01	94.48	94.43	93.82	90.55	0.00
% PF	82.99	82.53	81.26	76.84	66.88	44.85	4.15
AMPS	75.17	69.37	60.83	48.37	37.29	28.81	24.72

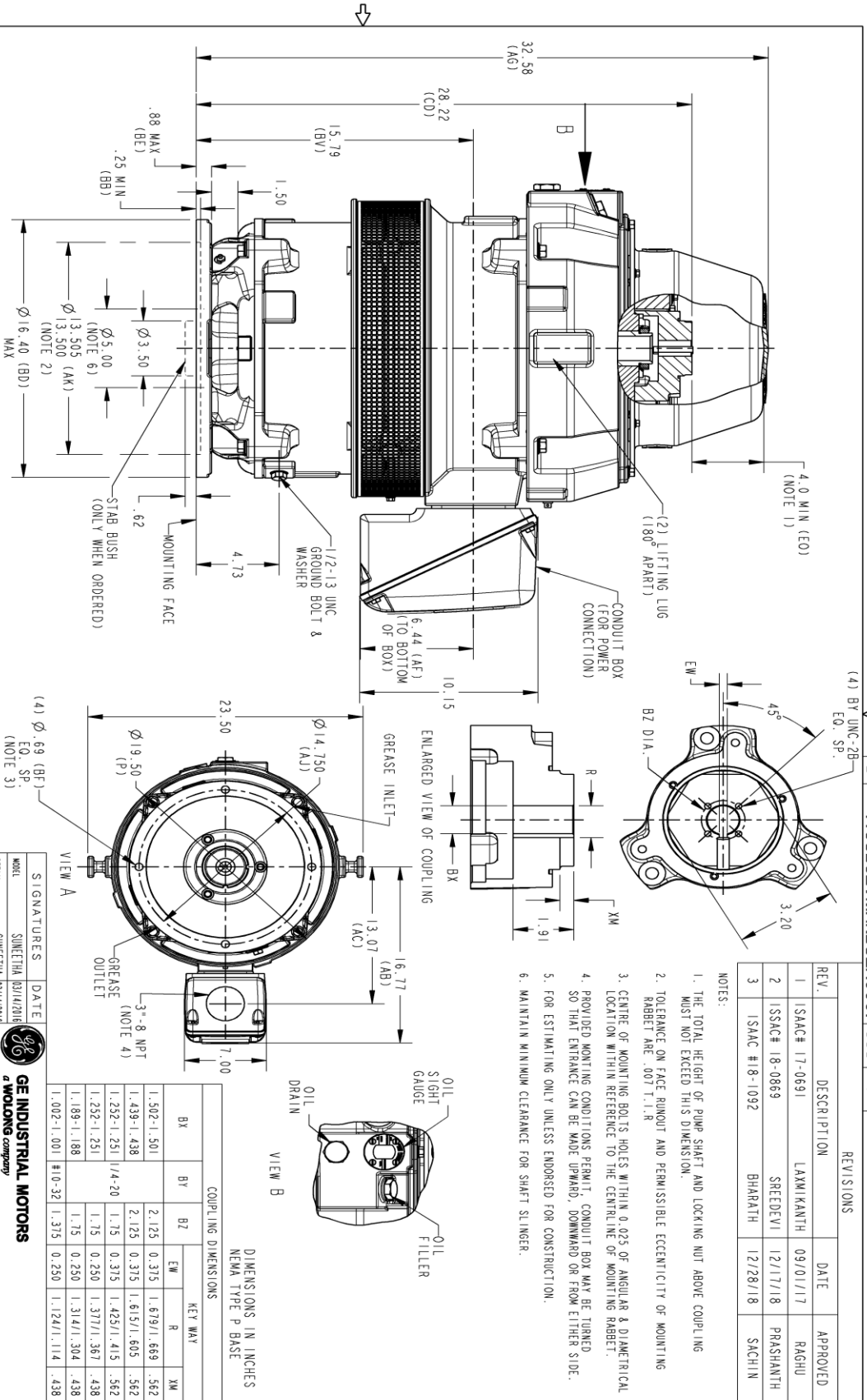
TORQ(FL)#FT	147.45	TORQ(LR)%FL	173.33	TORQ(BD)%FL	243.15
AMPS(LR)	337.38	PF AT START	0.34		

This motor is capable of two cold or one hot start with a maximum connected load inertia of 1384 Lb-Ft Sq (58.27 Kg-meter Sq) at 100% voltage, where the load torque varies with the square of the speed. Acceleration time with maximum inertia and the above load type is 44 seconds. Safe stall time at 100% voltage is 78 seconds cold, 53 seconds hot. Rotor inertia is 8.52 Lb-Ft Sq (0.36 Kg-meter Sq).

Open Circuit A-C:	0.57	Short Circuit D-C:	0.025
Short Circuit A-C:	0.035	X/R Ratio:	9.307
Stator Slots:	48	Rotor Slots:	38

Speed Torque Current Curve (First Connection, First Speed)





THIRD ANGLE PROJECTION

GE INDUSTRIAL MOTORS
a WOLONG company

OUTLINE, WPI

NEMA 324/326 HOLLOW SHAFT/HIGH THRUST
1650 BD, 346 CU IN C/BOX GROUND PAD

REV	DESCRIPTION	DATE	APPROVED
1	ISSAC# 17-0691	09/01/17	RAJHU
2	ISSAC# 18-0869	12/17/18	PRASHANTH
3	ISSAC# 18-1092	12/28/18	SACHIN

NOTES:

1. THE TOTAL HEIGHT OF PUMP SHAFT AND LOCKING NUT ABOVE COUPLING MUST NOT EXCEED THIS DIMENSION.
2. TOLERANCE ON FACE ROUNDT AND PERMISSIBLE ECCENTRICITY OF MOUNTING RABBIT ARE .001 T.I.R
3. CENTRE OF MOUNTING BOLTS HOLES WITHIN 0.025 OF ANGULAR & DIAMETRICAL LOCATION WITHIN REFERENCE TO THE CENTRELNE OF MOUNTING RABBIT.
4. PROVIDED MONTING CONDITIONS PERMIT, CONDUIT BOX MAY BE TIERED SO THAT ENTRANCE CAN BE MADE UPWARD, DOWNWARD OR FROM EITHER SIDE.
5. FOR ESTIMATING ONLY UNLESS ENDORSED FOR CONSTRUCTION.
6. MAINTAIN MINIMUM CLEARANCE FOR SHAFT SLINGER.

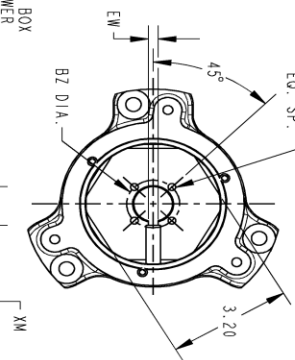
DIMENSIONS IN INCHES
NEMA TYPE P BASE

COUPLING DIMENSIONS				KEY WAY			
BX	BY	BZ	EW	R	XM	BX	BY
1.502-1.501	2.125	0.315	1.679/1.669	.562	.562	1.439-1.438	2.125
1.292-1.291	1.75	0.315	1.425/1.415	.562	.562	1.292-1.291	1.75
1.189-1.188	1.75	0.250	1.377/1.367	.438	.438	1.002-1.001	#10-32 1.315
			1.124/1.114	.438			

VIEW A

VIEW B

SIZE DRAWING NO. **148CB32VMHKBCLA0001** REV. **003**



Marks:

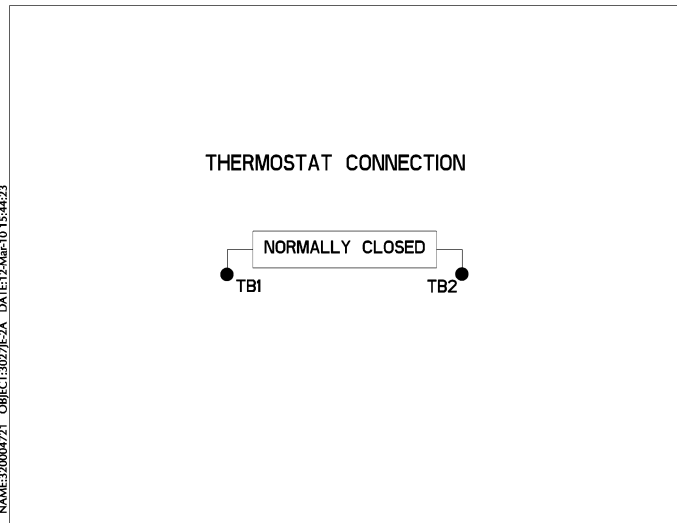
Connection Diagram
GEM2034E-FIG9



Heater Connection
3027JE-1C



Thermostat Connection
3027JE-2A



NAME:320004721 - OBJECT:3027JE-2A DATE:12-Mar-10 15:44:23



End shield Assembly		
Part Description	DE Side Part#	ODE Side Part#
End Shield	115E7205AA1	115E7208LK-G01
Bearing	235A2509BE01	235A2523AD01
Slinger/Inproseal	235A2300FM1	

Fan & Fan Cover Assembly	
Part Description	Part#
Fan	
Fan Cover	161C1052AA1

Conduit & Accessories Box Assembly	
Part Description	Part#
Conduit Box	149C4429AA2

Mechanical Accessories	
Part Description	Part#
Brake	
Tachometer	

