



GE INDUSTRIAL MOTORS
a **WOLONG** company

Product Technical Information

April 9, 2023

Data shown is for the current revision model #. Ensure your nameplate model # matches.

Model Number:	5KS404DAJ6075
Catalog Number:	V4053
Instruction Manual:	GEI-M1045
Connection Diagram:	GEM2034E-FIG273
Outline Drawing:	148CB40VMHKCCAA0001

Accessory Connection Diagrams

Bearing Thermocouple:	None	Heater:	3027JE-1C
RTD:	None	Thermistor:	None
Thermostat:	None	Winding Thermocouple:	None
Bearing RTD:	None		

Table of Contents

Specification	01
Performance Characteristics	02
Outline Drawing	03
Connection Drawing(s)	04
Spare parts	05

Marks:

MODEL NUMBER:	5KS404DAJ6075	Estimated Weight:	1140 Lbs
Outline Drawing:	148CB40VMHKCCAA0001	Time Rating:	CONT
Connection Diagram:	GEM2034E-FIG273	Enclosure:	WPI
Instruction Book:	GEI-M1045	Encl Construction:	OPEN
Design Code:	40BD1266B	Ambient Max(°C):	40
Type:	KS	Alt Ambient Max(°C):	--
Frame:	L404TP16	Insulation Class:	H
Phases:	3	NEMA Design:	B
Poles:	4	Nominal Efficiency:	95.4 %
Output Power:	100HP 74KW	Guaranteed Efficiency:	94.5 %
RPM:	1785	3/4 Load Efficiency:	--
Voltage:	460/575	KVA Code:	G
Hertz:	60	Max KVAR:	36.0
Amps - FL:	117.0/95.5	Power Factor:	82.5
Service Factor:	1.15	Bearing - DE:	6215C3
Alt Service Factor:	--	Bearing - ODE:	235A2532AA01

Enclosure is Weather Protected One

Stamped Nameplate Notes:

NEMA ENCLOSURE WP-I, CSA ENCL DP
 HTR LDS HE1-HE2 115V 100W
 ROT CCW FACING ODE LEAD/PH SEQ 1-2-3/1-2-3
 INVERTER DUTY PER NEMA MG1 PART 31
 ALTERNATE RATING FOR PWM CONTROL:1.0SF 40C AMBIENT
 VAR TORQUE RANGE 5 -60 HZ
 UPPER BRG LUBE OIL: 6 QTS
 AMB 0 TO 40 DEG C : ISO 32(MINERAL OR SYNTHETIC)
 AMB -15 TO 0 DEG C : ISO 32 SYNTHETIC



Additional Information:

4P, VERT HOLLOW SHAFT HIGH THRUST (1D)
C/BOX 700 CU IN - 3.00" NPT
OIL RESISTANT SLEEVING ON LEADS
115V HTR LDS TO MAIN CONDUIT BOX
BEARING LIFE 8760 HRS AT 7539 LB THRUST
BEARING LIFE 130K HRS AT 3794 LB THRUST
CG:18.50 IN FROM P-BASE FACE, STAT DEF:0.0032 IN
RCF:3240 CPM AT C/BOX SIDE, 3360 CPM AT
90 DEG FROM C/ BOX SIDE
NON-REVERSE BALL CARRIER,
BOLTED COUPLING, BX = 1.501 IN, EW= 0.375 IN
FIRE PUMP MOTOR
ESTIMATED SOUND PRESSURE < 85 DBA@ 1 METER



Performance Characteristics

1st Winding 1st Connection

Design: 40BD1266B

Marks:

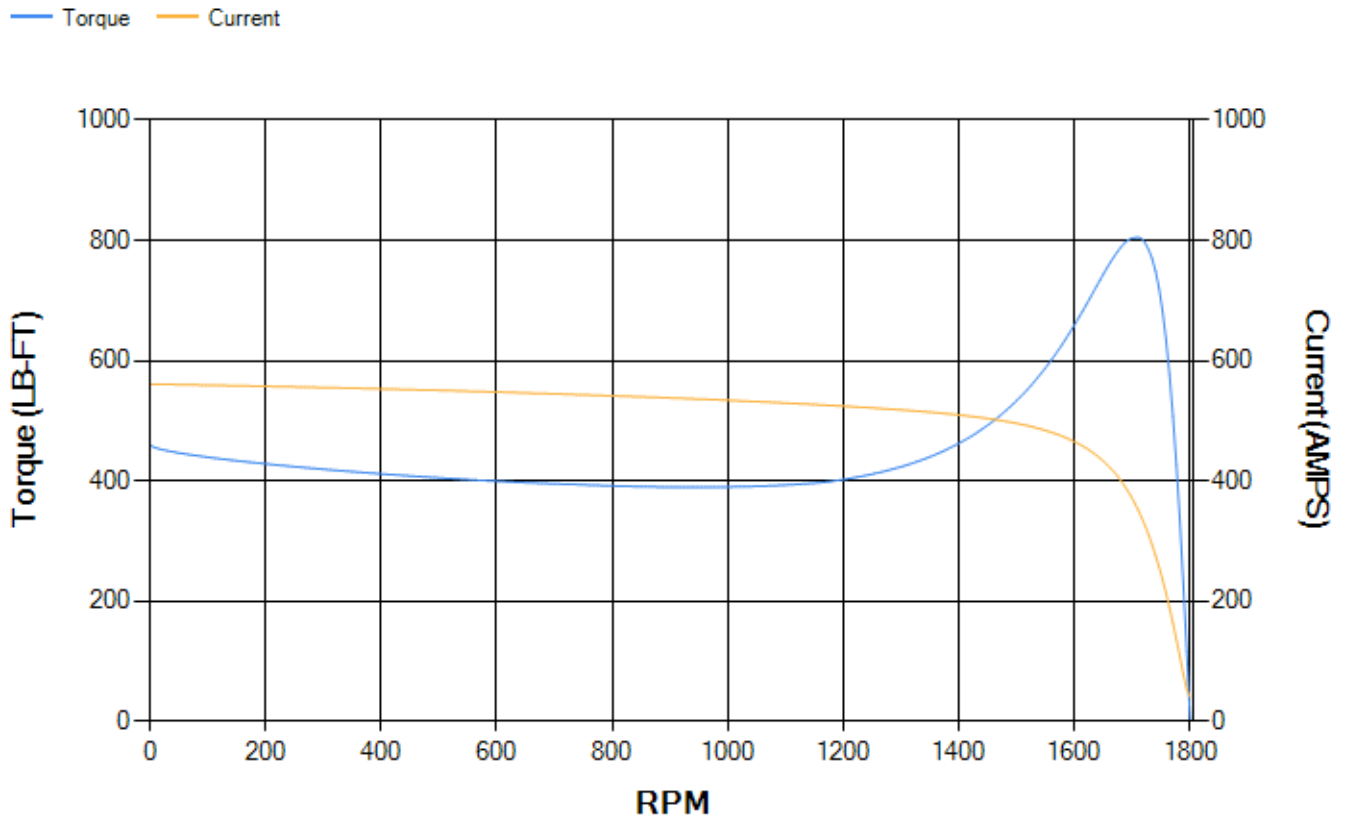
LOAD %	125.0	115.0	100.0	75.0	50.0	25.0	0.0
% EFF	94.51	94.68	95.06	94.88	94.2	90.94	0.00
% PF	84.81	84.14	82.58	77.69	67.18	44.62	4.08
AMPS	116.76	108.09	95.38	76.18	59.16	46.13	40.15

TORQ(FL)#FT	294.26	TORQ(LR)%FL	156.58	TORQ(BD)%FL	272.93
AMPS(LR)	560.83	PF AT START	0.31		

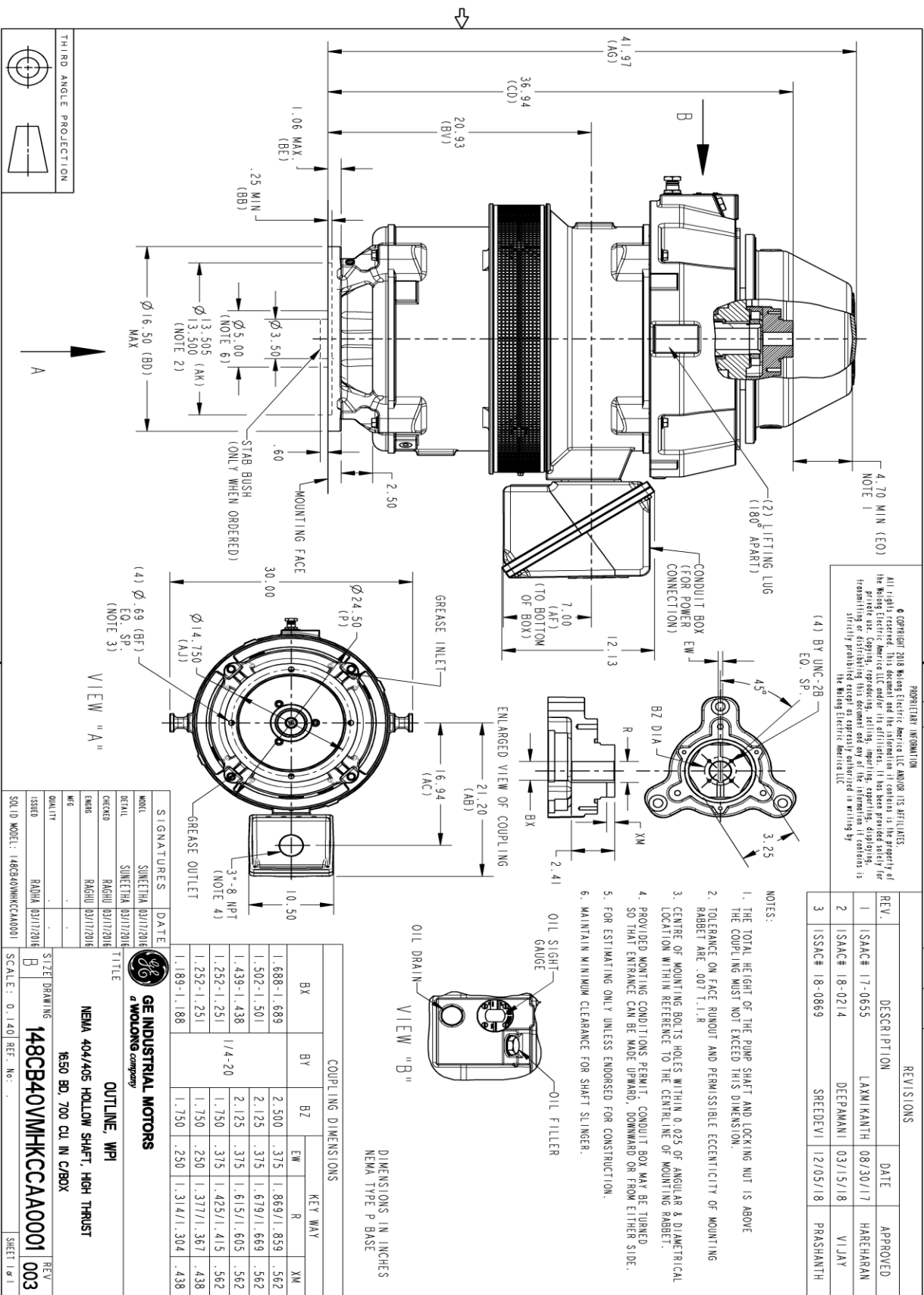
This motor is capable of two cold or one hot start with a maximum connected load inertia of 2327 Lb-Ft Sq (97.97 Kg-meter Sq)at 100% voltage, where the load torque varies with the square of the speed. Acceleration time with maximum inertia and the above load type is 38 seconds. Safe stall time at 100% voltage is 72 seconds cold, 46 seconds hot. Rotor inertia is 20.74 Lb-Ft Sq (0.87 Kg-meter Sq).

Open Circuit A-C:	0.671	Short Circuit D-C:	0.026
Short Circuit A-C:	0.044	X/R Ratio:	9.73
Stator Slots:	72	Rotor Slots:	58

Speed Torque Current Curve (First Connection, First Speed)



Marks:



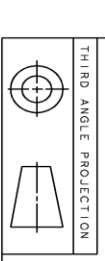
PROPRIETARY INFORMATION
 © COPYRIGHT 2018 Wolong Electric America LLC AND/OR ITS AFFILIATES
 All rights reserved. This document and the information it contains is the property of
 the Wolong Electric America LLC and/or its affiliates. It has been provided solely for
 transmission and delivery of the goods and services. No part of this document or its
 contents may be reproduced, stored in a retrieval system, or transmitted in any form
 or by any means, electronic, mechanical, photocopying, recording, or by any information
 system, without the prior written permission of Wolong Electric America LLC.

REV.	DESCRIPTION	DATE	APPROVED
1	ISAC# 17-0655	08/30/17	HAREHARAN
2	ISAC# 18-0214	03/15/18	VILAY
3	ISSAC# 18-0869	12/05/18	PRAASHANTH

- NOTES:
1. THE TOTAL HEIGHT OF THE PUMP SHAFT AND LOCKING NUT IS ABOVE THE COUPLING MUST NOT EXCEED THIS DIMENSION.
 2. TOLERANCE ON FACE RINOUT AND PERMISSIBLE ECCENTRICITY OF MOUNTING RABBIT ARE .007 ± 1.1 R
 3. CENTRE OF MOUNTING BOLTS HOLES WITHIN 0.025 OF ANGULAR & DIAMETRICAL LOCATION WITHIN REFERENCE TO THE CENTRAL LINE OF MOUNTING RABBIT.
 4. PROVIDED MONTING CONDITIONS PERMIT, CONDUIT BOX MAY BE TURNED SO THAT ENTRANCE CAN BE MADE UPWARD, DOWNWARD OR FROM EITHER SIDE.
 5. FOR ESTIMATING ONLY UNLESS ENDORSED FOR CONSTRUCTION.
 6. MAINTAIN MINIMUM CLEARANCE FOR SHAFT SLINGER.

COUPLING DIMENSIONS

KEY WAY	BX		BY		BZ	
	EW	R	EW	R	EW	R
	1.688-1.689	2.500	.375	1.869/1.859	.562	1.502-1.501
	1.439-1.438	2.125	.375	1.615/1.605	.562	1/4-20
	1.252-1.251	1.750	.250	1.377/1.367	.438	1.750
	1.189-1.188	1.750	.250	1.314/1.304	.438	1.750



SIGNATURES

NO.	SIGNATURE	DATE
1	SINETHA	03/17/2018
2	SINETHA	03/17/2018
3	RAGHU	03/17/2018
4	RAGHU	03/17/2018

GE INDUSTRIAL MOTORS
 a Wolong company

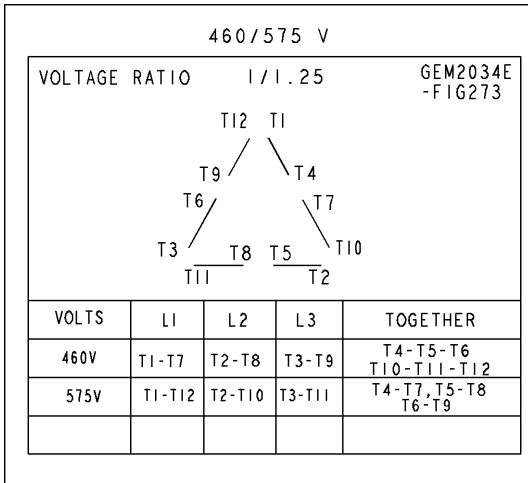
OUTLINE, WPI
 NEMA 404/405 HOLLOW SHAFT, HIGH THRUST
 650 BD, 700 CU IN C/BOX

SCALE: 0.140 REF. NO. 148CB40VMHKCCAA0001

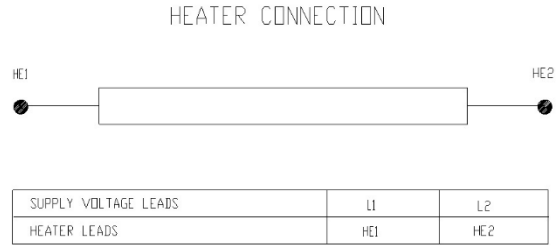
SIZE DRAWING NO. 148CB40VMHKCCAA0001 003
 REV SHEET 1

Marks:

Connection Diagram
GEM2034E-FIG273



Heater Connection
3027JE-1C



End shield Assembly		
Part Description	DE Side Part#	ODE Side Part#
End Shield	115E7306AC1	115E7310LK-G01
Bearing	235A2513AL01	235A2532AA01
Slinger/Inproseal	235A2300HW1	

Fan & Fan Cover Assembly	
Part Description	Part#
Fan	
Fan Cover	161C1054AA1

Conduit & Accessories Box Assembly	
Part Description	Part#
Conduit Box	118D4408AD2

Mechanical Accessories	
Part Description	Part#
Brake	
Tachometer	

