



**GE INDUSTRIAL MOTORS**  
a **WOLONG** company

# Product Technical Information

July 15, 2020

Data shown is for the current revision model #. Ensure your nameplate model # matches.

<b>Model Number:</b>	<b>5KS364DAJ6008D</b>
<b>Catalog Number:</b>	<b>V4418</b>
<b>Instruction Manual:</b>	GEI-M1045
<b>Connection Diagram:</b>	GEM2034E-FIG19
<b>Outline Drawing:</b>	148CB36VMHKBCAA0001

## Accessory Connection Diagrams

<b>Bearing Thermocouple:</b>	None	<b>Heater:</b>	3027JE-1C
<b>RTD:</b>	None	<b>Thermistor:</b>	None
<b>Thermostat:</b>	None	<b>Winding Thermocouple:</b>	None
<b>Bearing RTD:</b>	None		

## Table of Contents

Specification	01
Performance Characteristics	02
Outline Drawing	03
Connection Drawing(s)	04
Spare parts	05

Marks:

<b>MODEL NUMBER:</b>	<b>5KS364DAJ6008D</b>	<b>Estimated Weight:</b>	800 Lbs
<b>Outline Drawing:</b>	148CB36VMHKBCAA0001	<b>Time Rating:</b>	CONT
<b>Connection Diagram:</b>	GEM2034E-FIG19	<b>Enclosure:</b>	WPI
<b>Instruction Book:</b>	GEI-M1045	<b>Encl Construction:</b>	OPEN
<b>Design Code:</b>	36BD1236AA	<b>Ambient Max(°C):</b>	40
<b>Type:</b>	KS	<b>Alt Ambient Max(°C):</b>	--
<b>Frame:</b>	L364TP16	<b>Insulation Class:</b>	H
<b>Phases:</b>	3	<b>NEMA Design:</b>	B
<b>Poles:</b>	4	<b>Nominal Efficiency:</b>	95.0 %
<b>Output Power:</b>	60HP 44.4KW	<b>Guaranteed Efficiency:</b>	94.100 %
<b>RPM:</b>	1785	<b>3/4 Load Efficiency:</b>	--
<b>Voltage:</b>	460	<b>KVA Code:</b>	G
<b>Hertz:</b>	60	<b>Max KVAR:</b>	22.3
<b>Amps - FL:</b>	73.4	<b>Power Factor:</b>	81.0
<b>Service Factor:</b>	1.15	<b>Bearing - DE:</b>	6212C3
<b>Alt Service Factor:</b>	--	<b>Bearing - ODE:</b>	235A2523AD01

Enclosure is Weather Protected One

---

**Stamped Nameplate Notes:**

HTR LDS HE1-HE2 115V 100W  
 NEMA ENCLOSURE WP-I, CSA ENCL DP  
 ROT CCW FACING ODE LEAD/PH SEQ 1-2-3/1-2-3  
 INVERTER DUTY PER NEMA MG1 PART 31  
 ALTERNATE RATING FOR PWM CONTROL:1.0SF 40C AMBIENT  
 VAR TORQUE RANGE 5 -60 HZ  
 UPPER BRG LUBE OIL: 3.7 QTS  
 0 DEG C TO 40 DEG C : ISO 32(MINERAL OR SYNTHETIC)  
 -15 DEG C TO 0 DEG C : ISO 32 SYNTHETIC  
 SUITABLE FOR 50 HP, 380V, 50 HZ WITH  
 73.2 AMPS AND 1485 RPM AT 1.00 SF;



**Additional Information:**

4P, VERT HOLLOW SHAFT HIGH THRUST (1D)  
C/BOX 346 CU IN - 3.00" NPT  
OIL RESISTANT SLEEVING ON LEADS  
115V HTR LDS TO MAIN CONDUIT BOX  
BEARING LIFE 8760 HRS AT 6344 LB THRUST  
PART WINDING START  
CG:15.23 IN FROM P-BASE FACE, STAT DEF:0.0033 IN  
RCF:3300 CPM AT C/BOX SIDE, 3270 CPM AT  
90 DEG FROM C/ BOX SIDE  
NON-REVERSE BALL CARRIER,  
BOLTED COUPLING, BX = 1.251, EW = 0.25  
SPECIAL BALANCE;  
USABLE FOR FIRE PUMP APPLICATION AS WELL



**Performance Characteristics**

1st Winding 1st Connection

**Design: 36BD1236AA**

**Marks:**

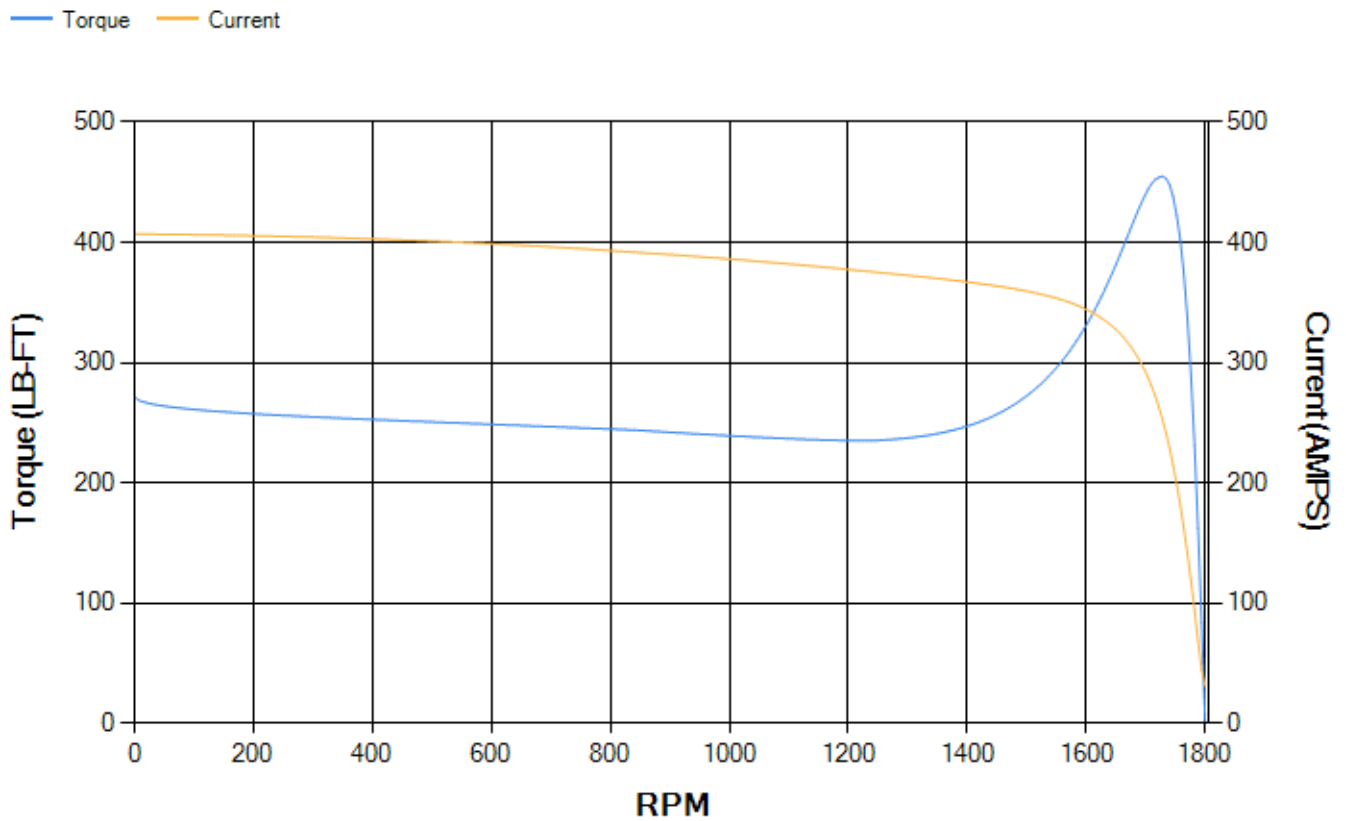
LOAD %	125.0	115.0	100.0	75.0	50.0	25.0	0.0
% EFF	94.1	94.29	94.69	94.53	93.81	90.35	0.00
% PF	83.31	82.68	81.16	76.27	65.76	43.46	4.06
AMPS	89.54	82.84	72.88	58.41	45.52	35.75	31.07

<b>TORQ(FL)#FT</b>	176.61	<b>TORQ(LR)%FL</b>	153.89	<b>TORQ(BD)%FL</b>	256.82
<b>AMPS(LR)</b>	406.96	<b>PF AT START</b>	0.3		

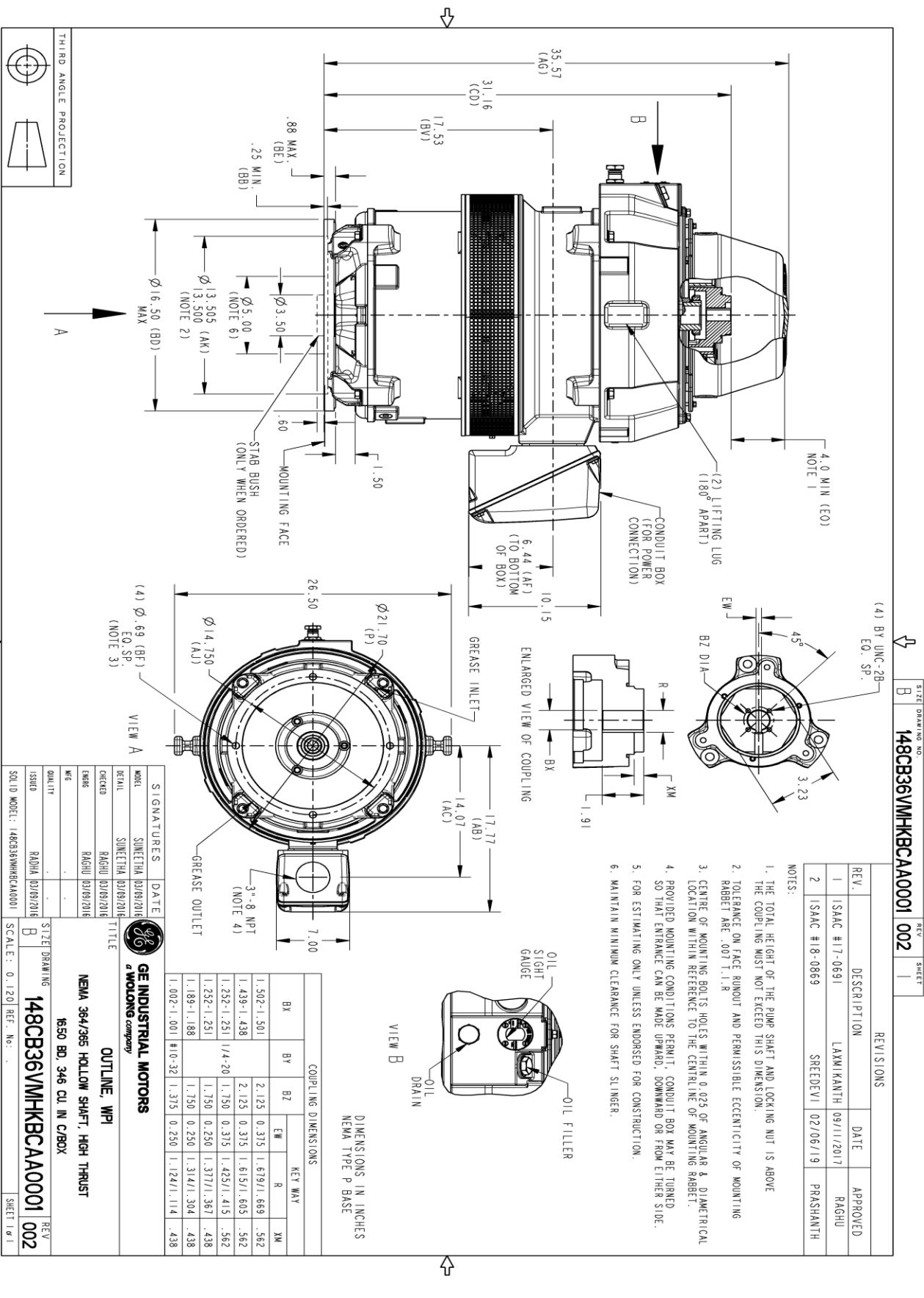
This motor is capable of two cold or one hot start with a maximum connected load inertia of 1534 Lb-Ft Sq (64.58 Kg-meter Sq)at 100% voltage, where the load torque varies with the square of the speed. Acceleration time with maximum inertia and the above load type is 44 seconds. Safe stall time at 100% voltage is 74 seconds cold, 54 seconds hot. Rotor inertia is 11.09 Lb-Ft Sq (0.47 Kg-meter Sq).

<b>Open Circuit A-C:</b>	0.641	<b>Short Circuit D-C:</b>	0.026
<b>Short Circuit A-C:</b>	0.041	<b>X/R Ratio:</b>	9.689
<b>Stator Slots:</b>	60	<b>Rotor Slots:</b>	50

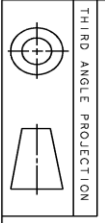
**Speed Torque Current Curve (First Connection, First Speed)**



Marks:



SIZE DRAWING NO. B 148CB36VMHKBCA0001 002 REV. SHEET 1



Marks:

**Connection Diagram**  
**GEM2034E-FIG19**



**Heater Connection**  
**3027JE-1C**



End shield Assembly		
Part Description	DE Side Part#	ODE Side Part#
End Shield	115E7255AA1	115E7259LJ1
Bearing	235A2509BE01	235A2523AD01
Slinger/Inproseal	235A2300FM1	

Fan & Fan Cover Assembly	
Part Description	Part#
Fan	
Fan Cover	161C1053AA1

Conduit & Accessories Box Assembly	
Part Description	Part#
Conduit Box	149C4429AA2

Mechanical Accessories	
Part Description	Part#
Brake	
Tachometer	

