



**GE INDUSTRIAL MOTORS**  
*a WOLONG company*

# Product Technical Information

July 15, 2020

**Data shown is for the current revision model #. Ensure your nameplate model # matches.**

<b>Model Number:</b>	<b>5KS404DAJ6008D2</b>
<b>Catalog Number:</b>	<b>V4421</b>
<b>Instruction Manual:</b>	GEI-M1045
<b>Connection Diagram:</b>	GEM2034E-FIG19
<b>Outline Drawing:</b>	148CB40VMHKCCAA0001

## Accessory Connection Diagrams

<b>Bearing Thermocouple:</b>	None	<b>Heater:</b>	3027JE-1C
<b>RTD:</b>	None	<b>Thermistor:</b>	None
<b>Thermostat:</b>	None	<b>Winding Thermocouple:</b>	None
<b>Bearing RTD:</b>	None		

## Table of Contents

Specification	01
Performance Characteristics	02
Outline Drawing	03
Connection Drawing(s)	04
Spare parts	05

Marks:

<b>MODEL NUMBER:</b>	<b>5KS404DAJ6008D2</b>	<b>Estimated Weight:</b>	1120 Lbs
<b>Outline Drawing:</b>	148CB40VMHKCCAA0001	<b>Time Rating:</b>	CONT
<b>Connection Diagram:</b>	GEM2034E-FIG19	<b>Enclosure:</b>	WPI
<b>Instruction Book:</b>	GEI-M1045	<b>Encl Construction:</b>	OPEN
<b>Design Code:</b>	40BD1201AA	<b>Ambient Max(°C):</b>	40
<b>Type:</b>	KS	<b>Alt Ambient Max(°C):</b>	--
<b>Frame:</b>	L404TP16	<b>Insulation Class:</b>	H
<b>Phases:</b>	3	<b>NEMA Design:</b>	B
<b>Poles:</b>	4	<b>Nominal Efficiency:</b>	95.4 %
<b>Output Power:</b>	100HP 74KW	<b>Guaranteed Efficiency:</b>	94.5 %
<b>RPM:</b>	1785	<b>3/4 Load Efficiency:</b>	94.7 %
<b>Voltage:</b>	460	<b>KVA Code:</b>	G
<b>Hertz:</b>	60	<b>Max KVAR:</b>	38.4
<b>Amps - FL:</b>	122.0	<b>Power Factor:</b>	81.5
<b>Service Factor:</b>	1.15	<b>Bearing - DE:</b>	6215C3
<b>Alt Service Factor:</b>	--	<b>Bearing - ODE:</b>	235A2532AA01

Enclosure is Weather Protected One

---

Stamped Nameplate Notes:

NEMA ENCLOSURE WP-I, CSA ENCL DP  
HTR LDS HE1-HE2 115V 100W  
ROT CCW FACING ODE LEAD/PH SEQ 1-2-3/1-2-3  
INVERTER DUTY PER NEMA MG1 PART 31  
ALTERNATE RATING FOR PWM CONTROL:1.0SF 40C AMBIENT  
VAR TORQUE RANGE 5 -60 HZ  
UPPER BRG LUBE OIL: 6 QTS  
0 DEG C TO 40 DEG C : ISO 32(MINERAL OR SYNTHETIC)  
-15 DEG C TO 0 DEG C : ISO 32 SYNTHETIC  
SUITABLE FOR 75 HP, 380V, 50 HZ WITH  
109 AMPS AND 1485 RPM AT 1.0 SF



**Additional Information:**

4P, VERT HOLLOW SHAFT HIGH THRUST (1D)  
C/BOX 700 CU IN - 3.00" NPT  
OIL RESISTANT SLEEVING ON LEADS  
115V HTR LDS TO MAIN CONDUIT BOX  
BEARING LIFE 8760 HRS AT 7539 LB THRUST  
PART WINDING START  
CG:18.50 IN FROM P-BASE FACE, STAT DEF:0.0032 IN  
RCF:3240 CPM AT C/BOX SIDE, 3360 CPM AT  
90 DEG FROM C/ BOX SIDE  
NON-REVERSE BALL CARRIER,  
BOLTED COUPLING, BX = 1.501  
SPECIAL BALANCE  
COMMON FOR STD STOCK AS WELL AS FIRE PUMP



**Performance Characteristics**

1st Winding 1st Connection

**Design: 40BD1201AA**

**Marks:**

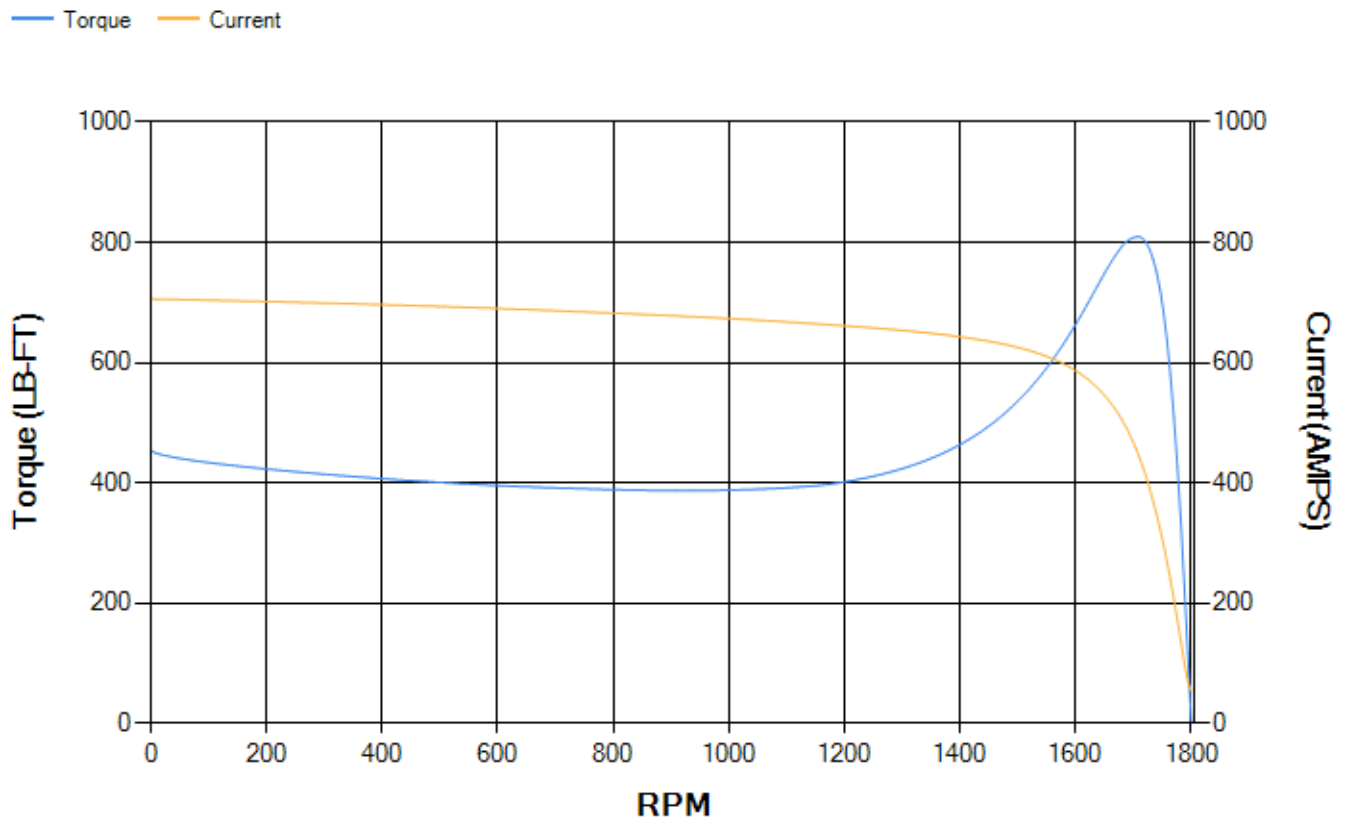
LOAD %	125.0	115.0	100.0	75.0	50.0	25.0	0.0
% EFF	94.36	94.53	94.91	94.72	93.99	90.59	0.00
% PF	83.93	83.16	81.42	76.13	65.13	42.57	3.97
AMPS	147.72	136.92	121.11	97.35	76.45	60.68	53.55

<b>TORQ(FL)#FT</b>	294.3	<b>TORQ(LR)%FL</b>	154.55	<b>TORQ(BD)%FL</b>	274.37
<b>AMPS(LR)</b>	705.8	<b>PF AT START</b>	0.31		

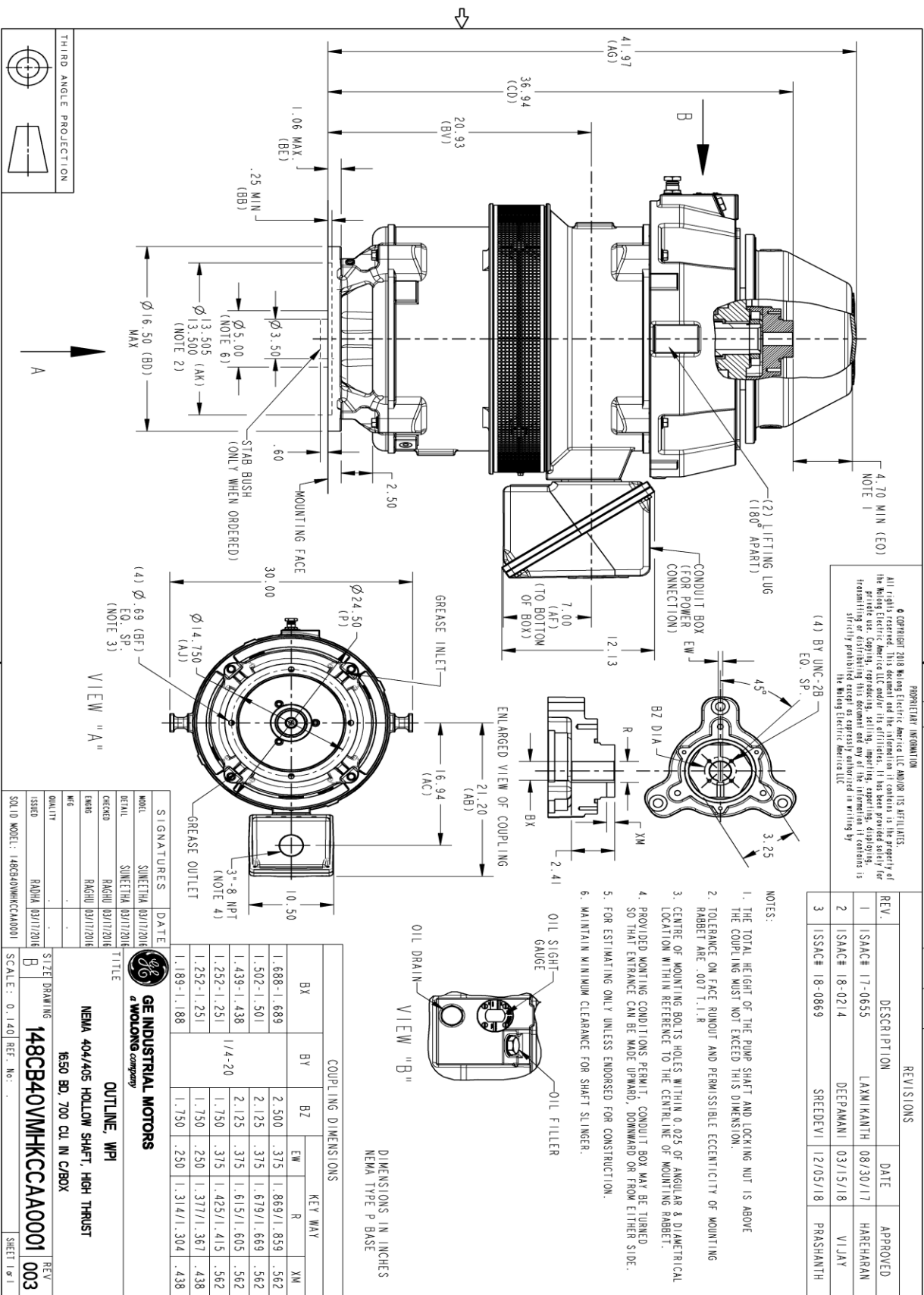
This motor is capable of two cold or one hot start with a maximum connected load inertia of 2149 Lb-Ft Sq (90.47 Kg-meter Sq)at 100% voltage, where the load torque varies with the square of the speed. Acceleration time with maximum inertia and the above load type is 36 seconds. Safe stall time at 100% voltage is 69 seconds cold, 43 seconds hot. Rotor inertia is 19.14 Lb-Ft Sq (0.81 Kg-meter Sq).

<b>Open Circuit A-C:</b>	0.624	<b>Short Circuit D-C:</b>	0.025
<b>Short Circuit A-C:</b>	0.043	<b>X/R Ratio:</b>	9.453
<b>Stator Slots:</b>	72	<b>Rotor Slots:</b>	58

**Speed Torque Current Curve (First Connection, First Speed)**



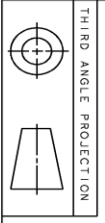
Marks:



PROPRIETARY INFORMATION  
 All rights reserved. This document and the information it contains is the property of the Moting Electric America LLC and/or its affiliates. It has been provided solely for the use of the customer and is not to be distributed, copied, or otherwise used without the written consent of Moting Electric America LLC. Moting Electric America LLC is strictly prohibited from retransmitting this information in any form without the written consent of Moting Electric America LLC.

REV. 003

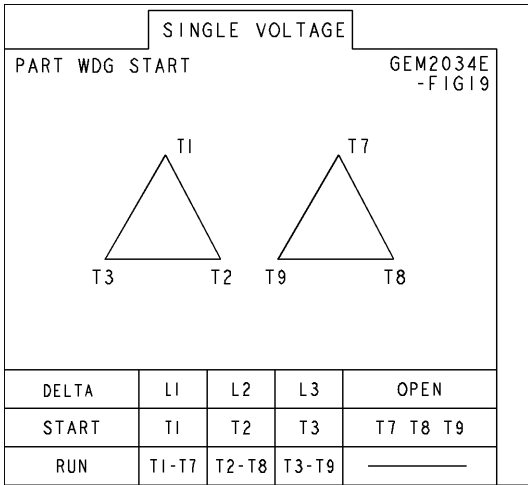
REV.	DESCRIPTION	DATE	APPROVED
1	ISAC# 17-0655	08/30/17	HAREHARAN
2	ISAC# 18-0214	03/15/18	VIJAY
3	ISSAC# 18-0869	12/05/18	PRAASHANTH



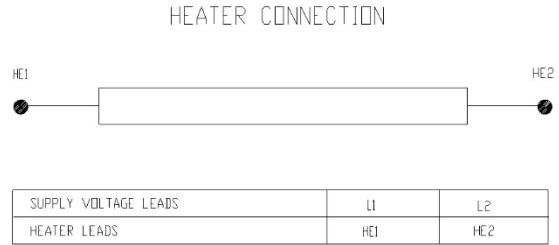
SIGNATURES	DATE	<p><b>GE INDUSTRIAL MOTORS</b> a WOLONG company</p> <p><b>OUTLINE, WPI</b> NEMA 404/405 HOLLOW SHAFT, HIGH THRUST 650 BD, 700 CU IN C/BOX</p>
MODEL	03/11/2016	
DETAIL	03/11/2016	
ORDER	03/11/2016	
ENGR	03/11/2016	
QC		
QUALITY		
ISSUED	03/11/2016	
SOLID MODEL:	148CB40VMHKCCA0001	
SCALE:	0.140	REF. NO.:
SIZE/DRAWING	B	148CB40VMHKCCA0001
REV		003

Marks:

**Connection Diagram**  
**GEM2034E-FIG19**



**Heater Connection**  
**3027JE-1C**



End shield Assembly		
Part Description	DE Side Part#	ODE Side Part#
End Shield	115E7306AC1	115E7310LJ1
Bearing	235A2513AL01	235A2532AA01
Slinger/Inproseal	235A2300HW1	

Fan & Fan Cover Assembly	
Part Description	Part#
Fan	
Fan Cover	161C1054AA1

Conduit & Accessories Box Assembly	
Part Description	Part#
Conduit Box	118D4408AD2

Mechanical Accessories	
Part Description	Part#
Brake	
Tachometer	

