



GE INDUSTRIAL MOTORS
a **WOLONG** company

Product Technical Information

July 15, 2020

Data shown is for the current revision model #. Ensure your nameplate model # matches.

Model Number:	5KS404DAJ6005D1
Catalog Number:	V4422
Instruction Manual:	GEI-M1045
Connection Diagram:	GEM2034E-FIG9
Outline Drawing:	148CB40VMHKCCAA0001

Accessory Connection Diagrams

Bearing Thermocouple:	None	Heater:	3027JE-1C
RTD:	None	Thermistor:	None
Thermostat:	None	Winding Thermocouple:	None
Bearing RTD:	None		

Table of Contents

Specification	01
Performance Characteristics	02
Outline Drawing	03
Connection Drawing(s)	04
Spare parts	05

Marks:

MODEL NUMBER:	5KS404DAJ6005D1	Estimated Weight:	1120 Lbs
Outline Drawing:	148CB40VMHKCCAA0001	Time Rating:	CONT
Connection Diagram:	GEM2034E-FIG9	Enclosure:	WPI
Instruction Book:	GEI-M1045	Encl Construction:	OPEN
Design Code:	40BD1201AB	Ambient Max(°C):	40
Type:	KS	Alt Ambient Max(°C):	--
Frame:	L404TP16	Insulation Class:	H
Phases:	3	NEMA Design:	B
Poles:	4	Nominal Efficiency:	95.4 %
Output Power:	100HP 74KW	Guaranteed Efficiency:	94.5 %
RPM:	1785	3/4 Load Efficiency:	94.0 %
Voltage:	230/460	KVA Code:	G
Hertz:	60	Max KVAR:	38.4
Amps - FL:	244.0/122.0	Power Factor:	81.5
Service Factor:	1.15	Bearing - DE:	6215C3
Alt Service Factor:	--	Bearing - ODE:	235A2532AA01

Enclosure is Weather Protected One

Stamped Nameplate Notes:

NEMA ENCLOSURE WP-I, CSA ENCL DP
HTR LDS HE1-HE2 115V 100W
ROT CCW FACING ODE LEAD/PH SEQ 1-2-3/1-2-3
INVERTER DUTY PER NEMA MG1 PART 31
ALTERNATE RATING FOR PWM CONTROL:1.0SF 40C AMBIENT
VAR TORQUE RANGE 5 -60 HZ
UPPER BRG LUBE OIL: 6 QTS
0 DEG C TO 40 DEG C : ISO 32(MINERAL OR SYNTHETIC)
-15 DEG C TO 0 DEG C : ISO 32 SYNTHETIC
SUITABLE FOR 75 HP, 190/380V, 50 HZ WITH
224.0/112.0 AMPS AND 1485 RPM AT 1.0 SF



Additional Information:

4P, VERT HOLLOW SHAFT HIGH THRUST (2D)
C/BOX 700 CU IN - 3.00" NPT
OIL RESISTANT SLEEVING ON LEADS
115V HTR LDS TO MAIN CONDUIT BOX
BEARING LIFE 8760 HRS AT 14609 LB THRUST
CG:18.50 IN FROM P-BASE FACE, STAT DEF:0.0032 IN
RCF:3240 CPM AT C/BOX SIDE, 3360 CPM AT
90 DEG FROM C/ BOX SIDE
NON-REVERSE BALL CARRIER,
BOLTED COUPLING, BX = 1.501
SPECIAL BALANCE



Performance Characteristics

1st Winding 1st Connection

Design: 40BD1201AB

Marks:

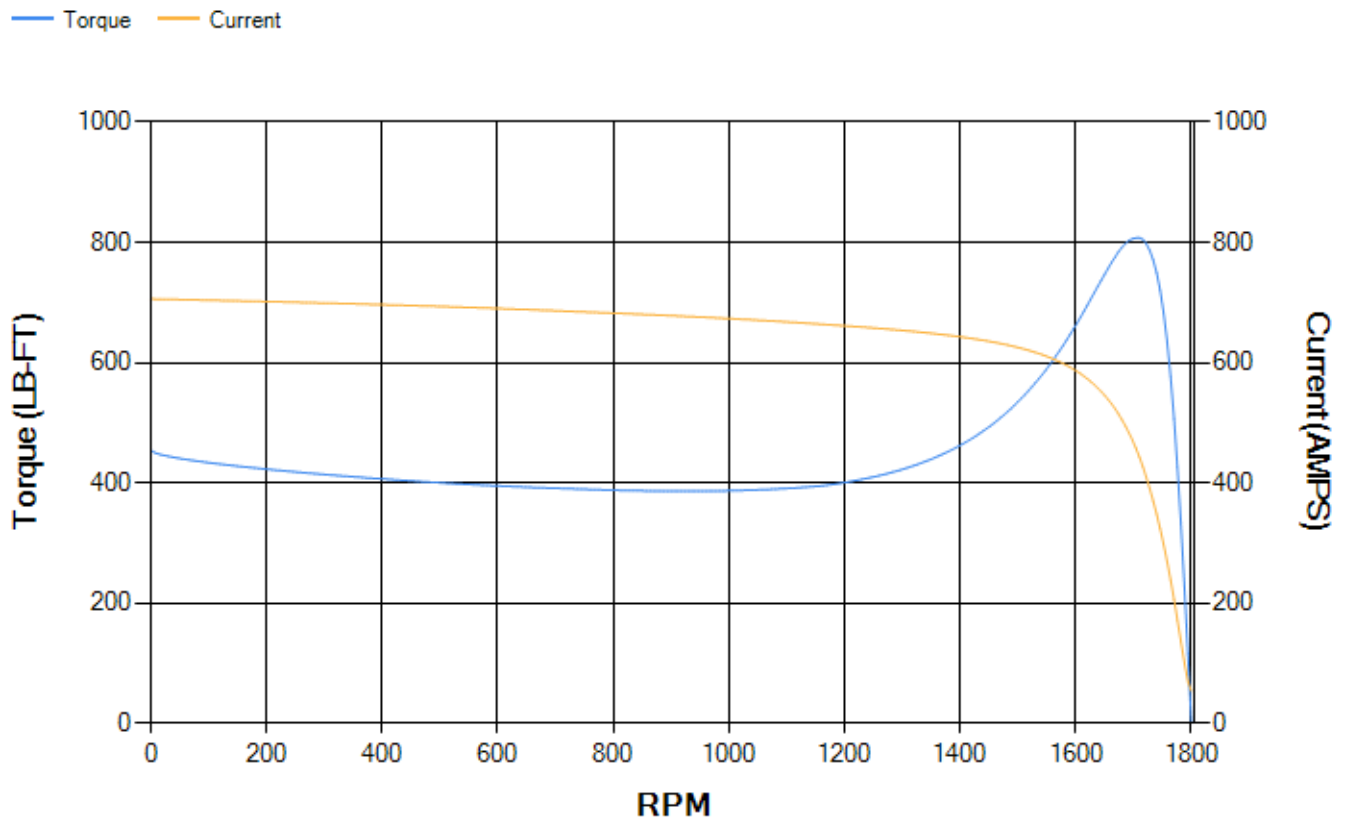
LOAD %	125.0	115.0	100.0	75.0	50.0	25.0	0.0
% EFF	93.91	94.04	94.35	93.99	92.94	88.7	0.00
% PF	83.97	83.21	81.51	76.3	65.49	43.27	4.98
AMPS	148.36	137.54	121.7	97.87	76.88	60.96	53.55

TORQ(FL)#FT	294.32	TORQ(LR)%FL	154.53	TORQ(BD)%FL	273.83
AMPS(LR)	705.8	PF AT START	0.31		

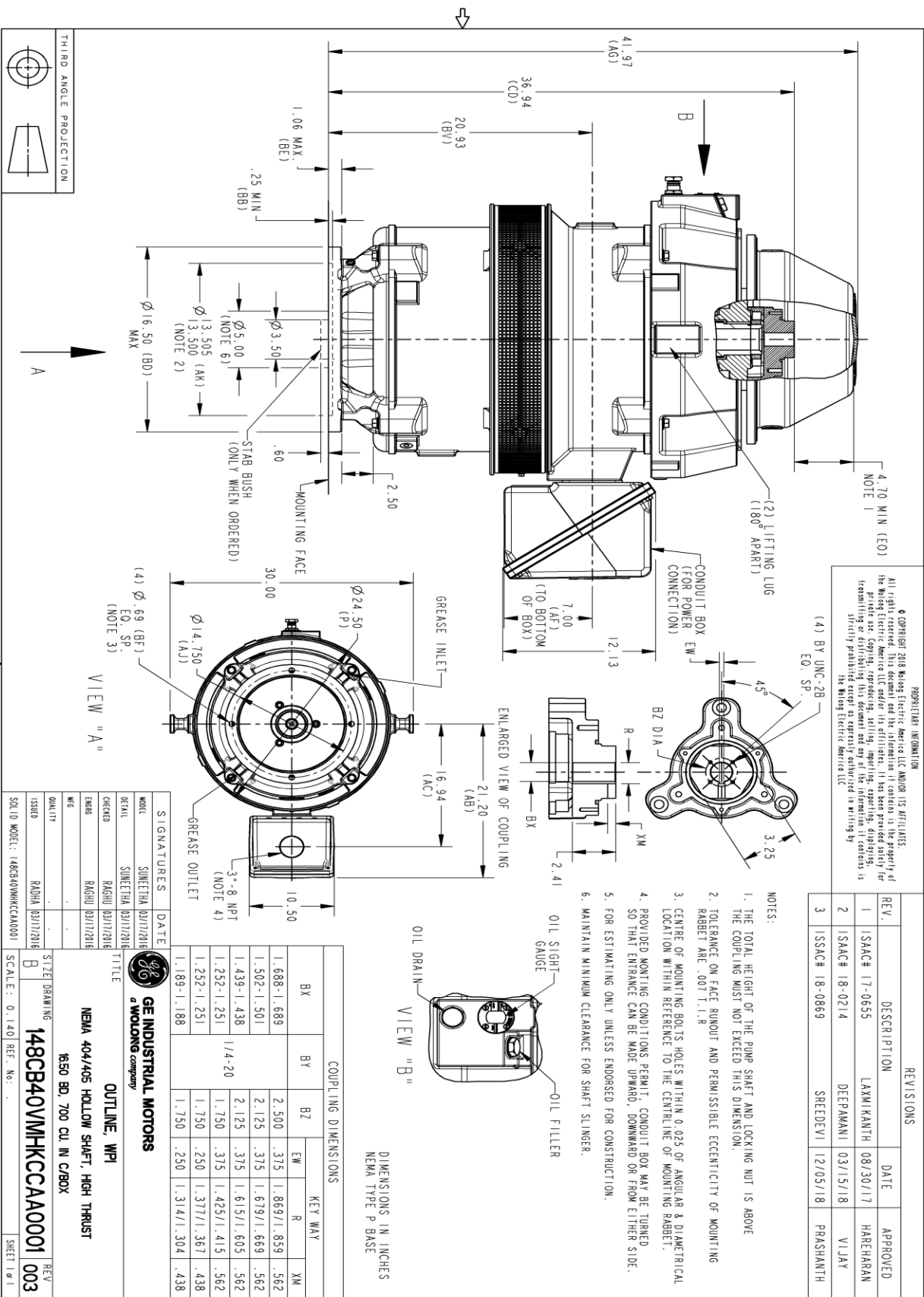
This motor is capable of two cold or one hot start with a maximum connected load inertia of 2128 Lb-Ft Sq (89.59 Kg-meter Sq)at 100% voltage, where the load torque varies with the square of the speed. Acceleration time with maximum inertia and the above load type is 35 seconds. Safe stall time at 100% voltage is 69 seconds cold, 42 seconds hot. Rotor inertia is 19.14 Lb-Ft Sq (0.81 Kg-meter Sq).

Open Circuit A-C:	0.622	Short Circuit D-C:	0.025
Short Circuit A-C:	0.043	X/R Ratio:	9.438
Stator Slots:	72	Rotor Slots:	58

Speed Torque Current Curve (First Connection, First Speed)



Marks:



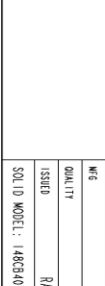
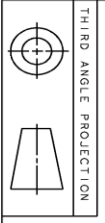
PROPRIETARY INFORMATION

All rights reserved. This document and the information it contains is the property of the Wolong Electric America LLC and/or its affiliates. It has been provided solely for the use of the customer and is not to be distributed, copied, or otherwise used without the written consent of the Wolong Electric America LLC. Any unauthorized use, reproduction, or distribution is strictly prohibited except as expressly authorized in writing by the Wolong Electric America LLC.

REV.	DESCRIPTION	DATE	APPROVED
1	ISAC# 17-0655	08/30/17	HAREHARAN
2	ISAC# 18-0214	03/15/18	VIJAY
3	ISSAC# 18-0869	12/05/18	PRAASHANTH

NOTES:

1. THE TOTAL HEIGHT OF THE PUMP SHAFT AND LOCKING NUT IS ABOVE THE COUPLING MUST NOT EXCEED THIS DIMENSION.
2. TOLERANCE ON FACE RINDOUT AND PERMISSIBLE ECCENTRICITY OF MOUNTING RABBIT ARE .007/1.1R
3. CENTRE OF MOUNTING BOLTS HOLES WITHIN 0.025 OF ANGULAR & DIAMETRICAL LOCATION WITHIN REFERENCE TO THE CENTRAL LINE OF MOUNTING RABBIT.
4. PROVIDED MOUNTING CONDITIONS PERMIT, CONDUIT BOX MAY BE TURNED SO THAT ENTRANCE CAN BE MADE UPWARD, DOWNWARD OR FROM EITHER SIDE.
5. FOR ESTIMATING ONLY UNLESS ENDORSED FOR CONSTRUCTION.
6. MAINTAIN MINIMUM CLEARANCE FOR SHAFT SLINGER.



SIZE DRAWING NO. **B** 148CB40VMHKCCAA0001 003

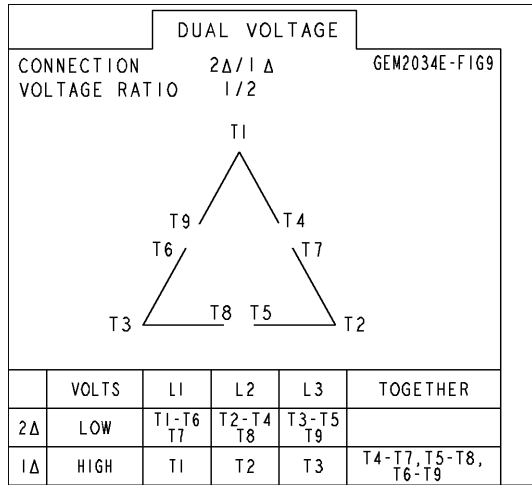
REV SHEET

REVISIONS

SCALE: 0.140 REF. NO. SHEET 1 OF 1

Marks:

Connection Diagram
GEM2034E-FIG9



Heater Connection
3027JE-1C



End shield Assembly		
Part Description	DE Side Part#	ODE Side Part#
End Shield	115E7306AC1	115E7310LJ1
Bearing	235A2513AL01	235A2532AA01
Slinger/Inproseal	235A2300HW1	

Fan & Fan Cover Assembly	
Part Description	Part#
Fan	
Fan Cover	161C1054AA1

Conduit & Accessories Box Assembly	
Part Description	Part#
Conduit Box	118D4408AD2

Mechanical Accessories	
Part Description	Part#
Brake	
Tachometer	

