



GE INDUSTRIAL MOTORS
a **WOLONG** company

Product Technical Information

July 15, 2020

Data shown is for the current revision model #. Ensure your nameplate model # matches.

Model Number:	5KS445DAJ6008D
Catalog Number:	V4429
Instruction Manual:	GEI-M1045
Connection Diagram:	GEM2034E-FIG19
Outline Drawing:	148CB44VMJKLGAA0001

Accessory Connection Diagrams

Bearing Thermocouple:	None	Heater:	3027JE-1C
RTD:	None	Thermistor:	None
Thermostat:	None	Winding Thermocouple:	None
Bearing RTD:	None		

Table of Contents

Specification	01
Performance Characteristics	02
Outline Drawing	03
Connection Drawing(s)	04
Spare parts	05

Marks:

MODEL NUMBER:	5KS445DAJ6008D	Estimated Weight:	2490 Lbs
Outline Drawing:	148CB44VMJKLGAA0001	Time Rating:	CONT
Connection Diagram:	GEM2034E-FIG19	Enclosure:	WPI
Instruction Book:	GEI-M1045	Encl Construction:	OPEN
Design Code:	44BD1229A	Ambient Max(°C):	40
Type:	KS	Alt Ambient Max(°C):	--
Frame:	L445TP20	Insulation Class:	H
Phases:	3	NEMA Design:	B
Poles:	4	Nominal Efficiency:	95.8 %
Output Power:	250HP 185KW	Guaranteed Efficiency:	95.0 %
RPM:	1780	3/4 Load Efficiency:	--
Voltage:	460	KVA Code:	G
Hertz:	60	Max KVAR:	73.7
Amps - FL:	287.0	Power Factor:	85.5
Service Factor:	1.15	Bearing - DE:	6217C3
Alt Service Factor:	--	Bearing - ODE:	235A2536AB01

Enclosure is Weather Protected One

Stamped Nameplate Notes:

NEMA ENCLOSURE WP-I, CSA ENCL DP
 HTR LDS HE1-HE2 115V 145W
 ROT CCW FACING ODE LEAD/PH SEQ 1-2-3/1-2-3
 INVERTER DUTY PER NEMA MG1 PART 31
 ALTERNATE RATING FOR PWM CONTROL:1.0SF 40C AMBIENT
 VAR TORQUE RANGE 5 -60 HZ
 UPPER BRG LUBE OIL: 10.2 QTS
 0 DEG C TO 40 DEG C : ISO 32(MINERAL OR SYNTHETIC)
 -15 DEG C TO 0 DEG C : ISO 32 SYNTHETIC
 SUITABLE FOR 200 HP, 380V, 50 HZ WITH
 279.0 AMPS AND 1480 RPM AT 1.0 SF



Additional Information:

4P, VERT HOLLOW SHAFT HIGH THRUST (2D)
C/BOX 1260 CU IN - 2(4.00" NPT)
C/B GRD PLATE
OIL RESISTANT SLEEVING ON LEADS
115V HTR LDS TO MAIN CONDUIT BOX
BEARING LIFE 8760 HRS AT 22551 LB THRUST
PART WINDING START
CG:22.60 IN FROM P-BASE FACE, STAT DEF:= 0.004 IN
RCF: 2950 CPM
NON-REVERSE BALL CARRIER,
BOLTED COUPLING, BX = 1.688", KEY = .375"
COMMON FOR STD STOCK AS WELL AS FIRE PUMP



Performance Characteristics

1st Winding 1st Connection

Design: 44BD1229A

Marks:

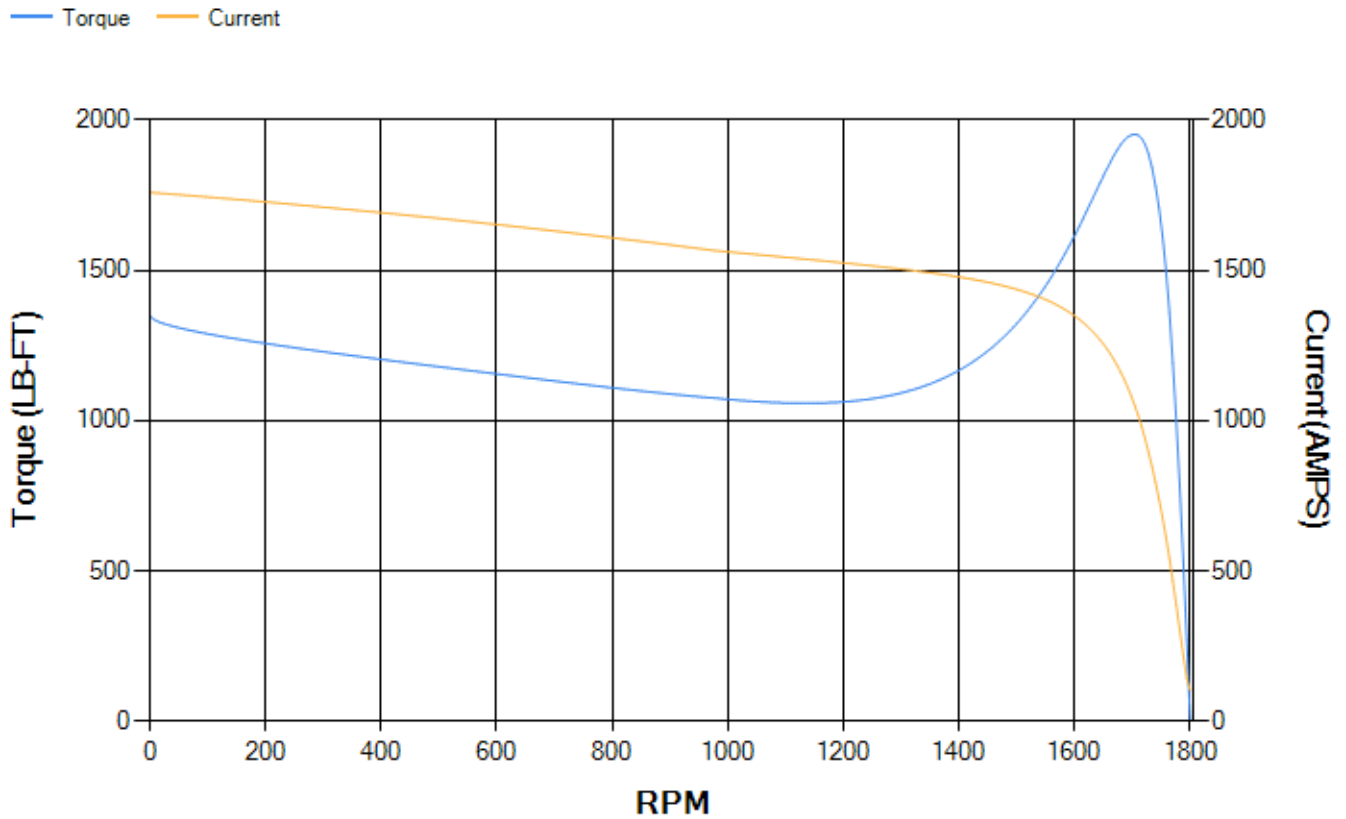
LOAD %	125.0	115.0	100.0	75.0	50.0	25.0	0.0
% EFF	94.89	95.1	95.55	95.53	95.15	92.7	0.00
% PF	86.71	86.37	85.39	81.79	73.01	50.97	3.84
AMPS	355.49	327.62	286.79	224.58	168.41	123.81	102.89

TORQ(FL)#FT	736.87	TORQ(LR)%FL	183.39	TORQ(BD)%FL	264.54
AMPS(LR)	1759.58	PF AT START	0.32		

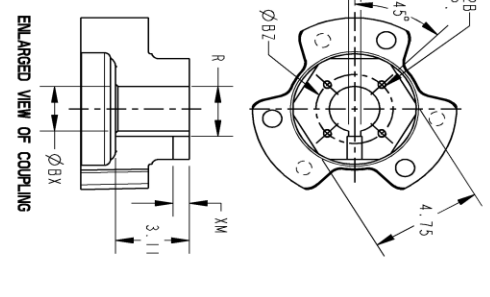
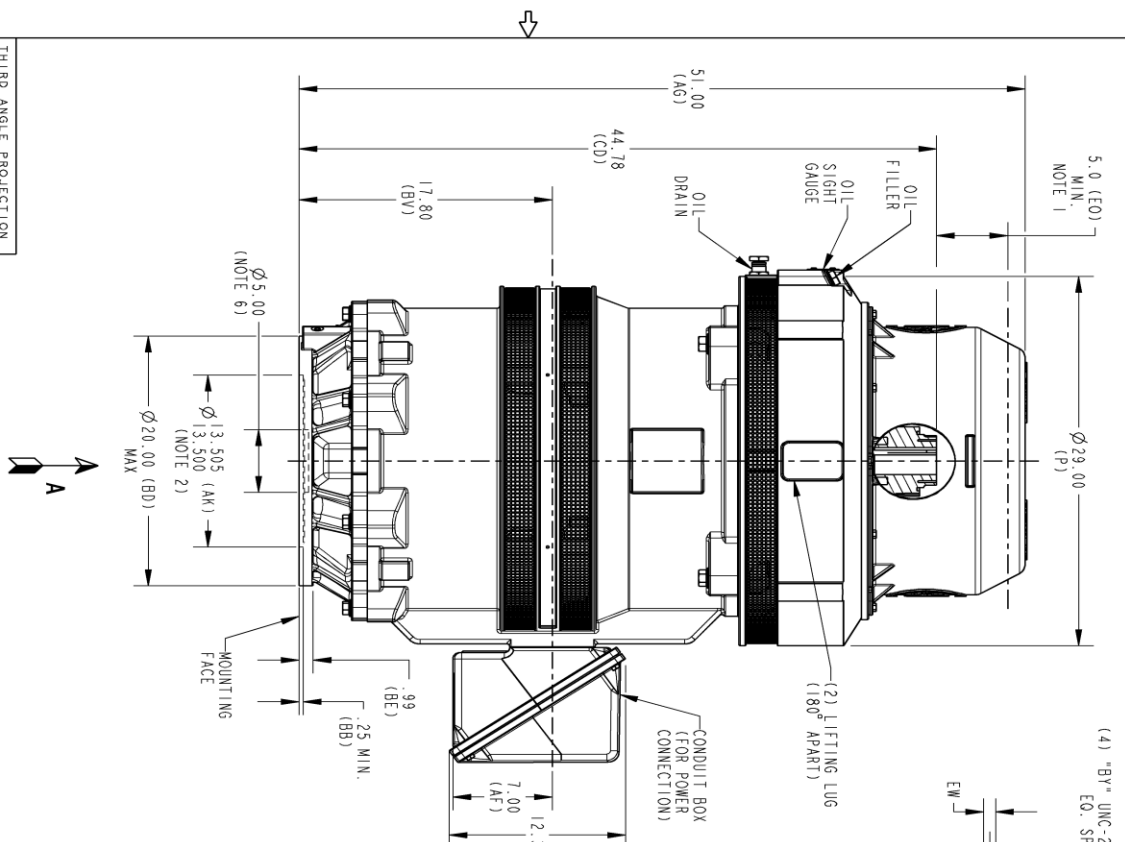
This motor is capable of two cold or one hot start with a maximum connected load inertia of 2583 Lb-Ft Sq (108.74 Kg-meter Sq)at 100% voltage, where the load torque varies with the square of the speed. Acceleration time with maximum inertia and the above load type is 16 seconds. Safe stall time at 100% voltage is 36 seconds cold, 19 seconds hot. Rotor inertia is 64.39 Lb-Ft Sq (2.71 Kg-meter Sq).

Open Circuit A-C:	0.683	Short Circuit D-C:	0.03
Short Circuit A-C:	0.036	X/R Ratio:	11.186
Stator Slots:	72	Rotor Slots:	58

Speed Torque Current Curve (First Connection, First Speed)



Marks:



REV. DESCRIPTION DATE APPROVED

1 ISSAC# 18-0869 SREEDevi 12/28/18 PRASHANTH

2 ISSAC# 19-0280 LAXMI KANTH 03/20/19 ANIL

- NOTES:
1. THE TOTAL HEIGHT OF PUMP SHAFT AND LOCKING NUT ABOVE COUPLING MUST NOT EXCEED THIS DIMENSION.
 2. TOLERANCE ON FACE ROUNDOFF AND PERMISSIBLE ECCENTRICITY OF MOUNTING RABBET ARE .007 T.1.R
 3. CENTRE OF MOUNTING BOLTS HOLES WITHIN 0.025 OF ANGULAR & DIAMETRICAL LOCATION WITHIN REFERENCE TO THE CENTRELINE OF MOUNTING RABBET.
 4. PROVIDED MOUNTING CONDITIONS PERMIT, CONDUIT BOX MAY BE TURNED SO THAT ENTRANCE CAN BE MADE UPWARD, DOWNWARD OR FROM EITHER SIDE.
 5. FOR ESTIMATING ONLY UNLESS ENDORSED FOR CONSTRUCTION.
 6. MAINTAIN MINIMUM CLEARANCE FOR SHAFT SLINGER.

DIMENSIONS IN INCHES

NEMA TYPE P BASE

COUPLING DIMENSIONS

KEY WAY	BY	BZ	EW	R	XW
1.501	1/4-20	2.125	.315	1.559	.562
1.500	1/4-20	2.500	.315	1.559	.562
1.751	1/4-20	2.500	.315	1.922	.562
1.813	1/4-20	2.500	.500	2.033	.688
1.938	1/4-20	2.500	.500	2.160	.688
2.001	3/8-16	3.250	.500	2.223	.688
2.063	3/8-16	3.250	.500	2.287	.688
2.126	3/8-16	3.250	.500	2.350	.688
2.188	3/8-16	3.250	.500	2.414	.688
2.251	3/8-16	3.250	.500	2.477	.688
2.316	3/8-16	3.250	.500	2.541	.688
2.438	3/8-16	3.250	.625	2.715	.812
2.501	3/8-16	3.250	.625	2.778	.812

SIGNATURES DATE

MODEL RAN 07/05/2016

DETAIL RAN 07/05/2016

DESIGN SASI 07/05/2016

ENGR SASI 07/05/2016

WIG

QUALITY

ISSUED

SOLID MODEL: 148CB44VMJKLGA0001

GE INDUSTRIAL MOTORS

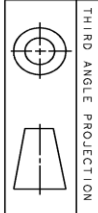
WOLONG company

OUTLINE, NEMA WPI 444/445

VERTICAL HOLLOW SHAFT, HIGH THRUST GR5 LOWER

200 BD, 1260 CL IN C/BOX

SCALE: 0.120 REF. NO.



SIZE DRAWING NO. 148CB44VMJKLGA0001 002

REV. SHEET 1

REVISIONS

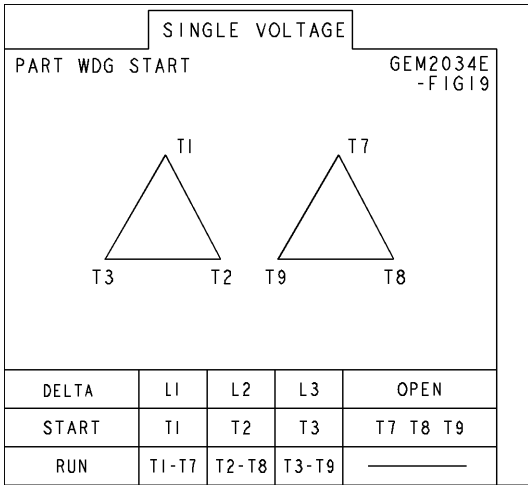
SIZE DRAWING B

REV. SHEET 1

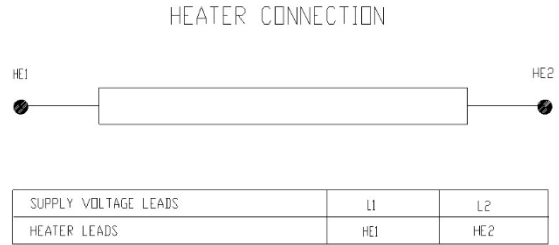
148CB44VMJKLGA0001 002

Marks:

Connection Diagram
GEM2034E-FIG19



Heater Connection
3027JE-1C



End shield Assembly		
Part Description	DE Side Part#	ODE Side Part#
End Shield	115E7661AA1	115E7670LM1
Bearing	235A2522AJ01	235A2536AB01
Slinger/Inproseal	149C4399G06	

Fan & Fan Cover Assembly	
Part Description	Part#
Fan	
Fan Cover	161C1050AA1

Conduit & Accessories Box Assembly	
Part Description	Part#
Conduit Box	179B9058G03

Mechanical Accessories	
Part Description	Part#
Brake	
Tachometer	

