



**GE INDUSTRIAL MOTORS**  
*a WOLONG company*

# Product Technical Information

October 31, 2020

**Data shown is for the current revision model #. Ensure your nameplate model # matches.**

<b>Model Number:</b>	<b>5KS444DAJ6074A</b>
<b>Catalog Number:</b>	<b>V4444</b>
<b>Instruction Manual:</b>	GEI-M1045
<b>Connection Diagram:</b>	GEM2034E-FIG24
<b>Outline Drawing:</b>	148CB44VMHKCCA0001

Accessory Connection Diagrams			
<b>Bearing Thermocouple:</b>	None	<b>Heater:</b>	3027JE-1C
<b>RTD:</b>	None	<b>Thermistor:</b>	None
<b>Thermostat:</b>	None	<b>Winding Thermocouple:</b>	None
<b>Bearing RTD:</b>	None		

## Table of Contents

Specification	01
Performance Characteristics	02
Outline Drawing	03
Connection Drawing(s)	04
Spare parts	05

Marks:

<b>MODEL NUMBER:</b>	<b>5KS444DAJ6074A</b>	<b>Estimated Weight:</b>	2300 Lbs
<b>Outline Drawing:</b>	148CB44VMHKCCAA0001	<b>Time Rating:</b>	CONT
<b>Connection Diagram:</b>	GEM2034E-FIG24	<b>Enclosure:</b>	WPI
<b>Instruction Book:</b>	GEI-M1045	<b>Encl Construction:</b>	OPEN
<b>Design Code:</b>	44BD1228A	<b>Ambient Max(°C):</b>	40
<b>Type:</b>	KS	<b>Alt Ambient Max(°C):</b>	--
<b>Frame:</b>	L444TP16	<b>Insulation Class:</b>	H
<b>Phases:</b>	3	<b>NEMA Design:</b>	B
<b>Poles:</b>	4	<b>Nominal Efficiency:</b>	95.8 %
<b>Output Power:</b>	150HP 111KW	<b>Guaranteed Efficiency:</b>	95.0 %
<b>RPM:</b>	1785	<b>3/4 Load Efficiency:</b>	--
<b>Voltage:</b>	460	<b>KVA Code:</b>	G
<b>Hertz:</b>	60	<b>Max KVAR:</b>	50.0
<b>Amps - FL:</b>	177.0	<b>Power Factor:</b>	83.5
<b>Service Factor:</b>	1.15	<b>Bearing - DE:</b>	6217C3
<b>Alt Service Factor:</b>	--	<b>Bearing - ODE:</b>	235A2536AB01

Enclosure is Weather Protected One

---

Stamped Nameplate Notes:

NEMA ENCLOSURE WP-I, CSA ENCL DP  
HTR LDS HE1-HE2 115V 145W  
ROT CCW FACING ODE LEAD/PH SEQ 1-2-3/1-2-3  
INVERTER DUTY PER NEMA MG1 PART 31  
ALTERNATE RATING FOR PWM CONTROL:1.0SF 40C AMBIENT  
VAR TORQUE RANGE 5 -60 HZ  
UPPER BRG LUBE OIL: 10.2 QTS  
0 DEG C TO 40 DEG C : ISO 32(MINERAL OR SYNTHETIC)  
-15 DEG C TO 0 DEG C : ISO 32 SYNTHETIC  
SUITABLE FOR 125 HP, 380V, 50 HZ WITH  
178.0 AMPS AND 1485 RPM AT 1.0 SF



**Additional Information:**

4P, VERT HOLLOW SHAFT HIGH THRUST (2D)  
C/BOX 700 CU IN - 3.00" NPT  
OIL RESISTANT SLEEVING ON LEADS  
115V HTR LDS TO MAIN CONDUIT BOX  
BEARING LIFE 8760 HRS AT 22551 LB THRUST  
PART WINDING START  
CG:22.60 IN FROM P-BASE FACE, STAT DEF:= 0.005 IN  
RCF: 2750 CPM (+/-10%)  
NON-REVERSE BALL CARRIER,  
BOLTED COUPLING, BX = 1.688 IN, EW= 0.375 IN  
COMMON FOR STD STOCK AS WELL AS FIRE PUMP



**Performance Characteristics**

1st Winding 1st Connection

**Design: 44BD1228A**

**Marks:**

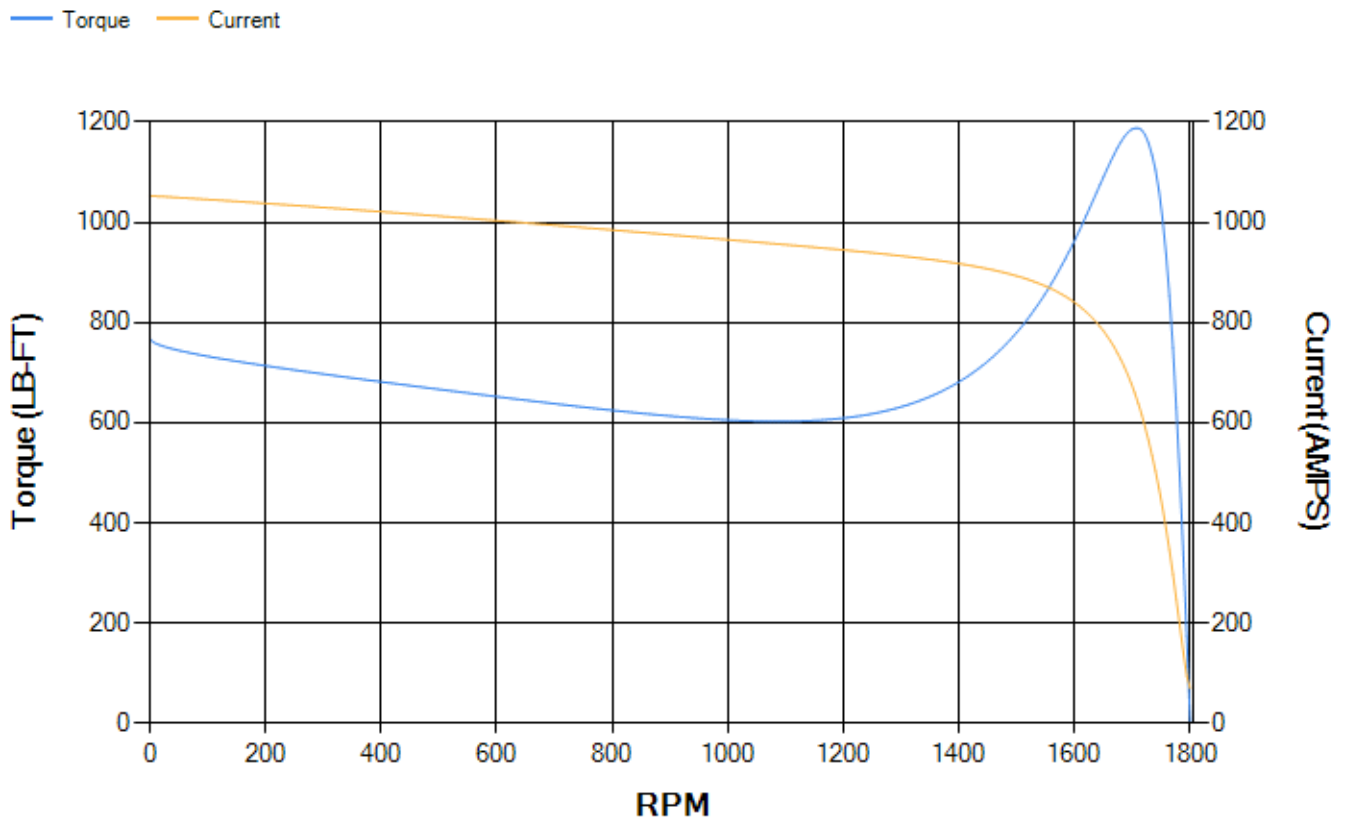
LOAD %	125.0	115.0	100.0	75.0	50.0	25.0	0.0
% EFF	94.71	94.9	95.3	95.2	94.64	91.75	0.00
% PF	85.58	85.05	83.75	79.39	69.54	47.05	3.96
AMPS	216.5	200.03	175.9	139.32	106.65	81.31	69.67

<b>TORQ(FL)#FT</b>	441.48	<b>TORQ(LR)%FL</b>	174.05	<b>TORQ(BD)%FL</b>	268.74
<b>AMPS(LR)</b>	1053.13	<b>PF AT START</b>	0.32		

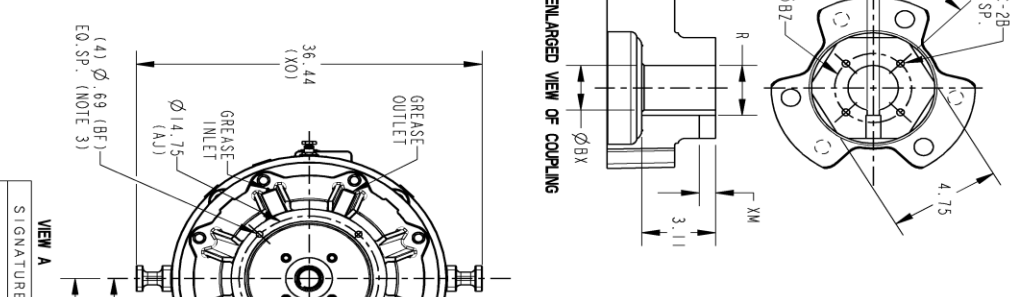
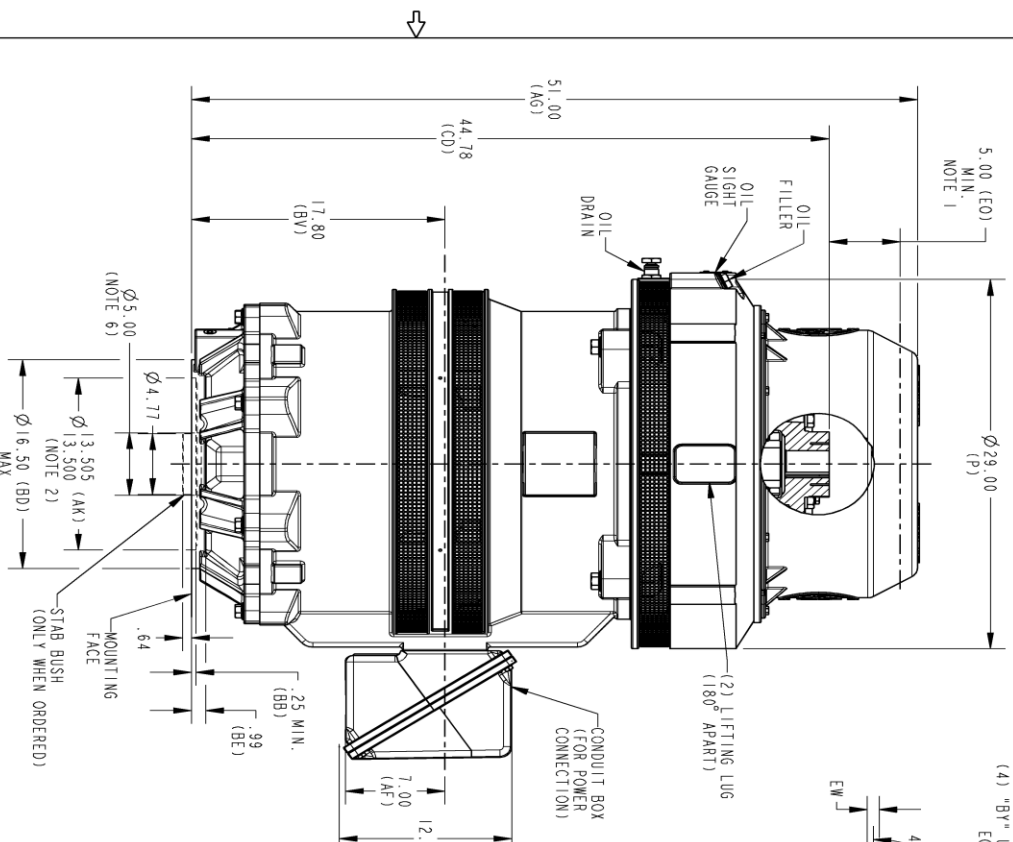
This motor is capable of two cold or one hot start with a maximum connected load inertia of 2405 Lb-Ft Sq (101.25 Kg-meter Sq)at 100% voltage, where the load torque varies with the square of the speed. Acceleration time with maximum inertia and the above load type is 25 seconds. Safe stall time at 100% voltage is 47 seconds cold, 30 seconds hot. Rotor inertia is 45.75 Lb-Ft Sq (1.93 Kg-meter Sq).

<b>Open Circuit A-C:</b>	0.707	<b>Short Circuit D-C:</b>	0.027
<b>Short Circuit A-C:</b>	0.043	<b>X/R Ratio:</b>	10.262
<b>Stator Slots:</b>	72	<b>Rotor Slots:</b>	58

**Speed Torque Current Curve (First Connection, First Speed)**



Marks:



REVISIONS

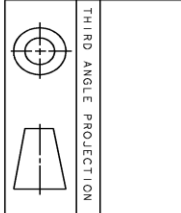
REV.	DESCRIPTION	DATE	APPROVED
1	ISAC#19-0070	01/30/19	DHEERAJ

NOTES:

- THE TOTAL HEIGHT OF PUMP SHAFT AND LOCKING NUT ABOVE COUPLING MUST NOT EXCEED THIS DIMENSION.
- TOLERANCE ON FACE ROUNDOFF AND PERMISSIBLE ECCENTRICITY OF MOUNTING RABBIT ARE .007 T.1.R
- CENTRE OF MOUNTING BOLTS HOLES WITHIN 0.025 OF ANGULAR & DIAMETRICAL LOCATION WITHIN REFERENCE TO THE CENTRILY OF MOUNTING RABBIT.
- PROVIDED MOUNTING CONDITIONS PERMIT, CONDUIT BOX MAY BE TURNED SO THAT ENTRANCE CAN BE MADE UPWARD, DOWNWARD OR FROM EITHER SIDE.
- FOR ESTIMATING ONLY UNLESS ENDORSED FOR CONSTRUCTION.
- MAINTAIN MINIMUM CLEARANCE FOR SHAFT SLINGER.

DIMENSIONS IN INCHES  
NEMA TYPE P BASE

COUPLING DIMENSIONS		KEY WAY	
BX	BY	BZ	EW
1.501	1/4-20	2.125	.375
1.588	1/4-20	2.500	.375
1.751	1/4-20	2.500	.375
1.813	1/4-20	2.500	.500
1.938	1/4-20	2.500	.500
2.001	3/8-16	3.250	.500
2.063	3/8-16	3.250	.500
2.126	3/8-16	3.250	.500
2.188	3/8-16	3.250	.500
2.251	3/8-16	3.250	.500
2.316	3/8-16	3.250	.500
2.438	3/8-16	3.250	.625
2.501	3/8-16	3.250	.625



PROHIBITARY INFORMATION

All rights reserved. This document and the information it contains is the property of the Wabtec Electric America LLC and its affiliates. It has been provided solely for the private use. Copying, reproducing, selling, importing, exporting, distributing, transmitting or distributing this document and any of the information it contains is strictly prohibited. The Wabtec Electric America LLC.

SIGNATURES

MODEL	DATE
RAVI 07/01/16	
RAVI 07/01/16	
SASI 07/01/16	
SASI 07/01/16	

TITLE

**GE INDUSTRIAL MOTORS**  
a wabtec company

OUTLINE, NEMA WPI 444/445  
VERTICAL HOLLOW SHAFT, HIGH THRUST GRS LOWER  
16.5 BD, 700 CU IN C/BXD

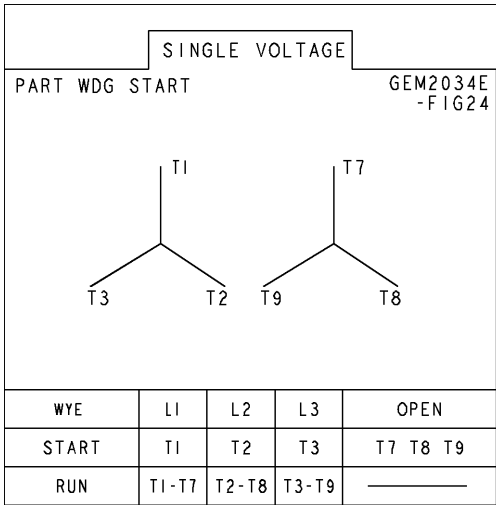
SCALE: 0.120 REF. NO.:

148CB44VMHKCCAA0001 001

SIZE DRAWING NO. B 148CB44VMHKCCAA0001 REV SHEET 1

**Marks:**

**Connection Diagram**  
**GEM2034E-FIG24**



**Heater Connection**  
**3027JE-1C**



End shield Assembly		
Part Description	DE Side Part#	ODE Side Part#
End Shield	115E7660AA1	115E7670LM1
Bearing	235A2522AJ01	235A2536AB01
Slinger/Inproseal	149C4399G06	

Fan & Fan Cover Assembly	
Part Description	Part#
Fan	
Fan Cover	161C1050AA1

Conduit & Accessories Box Assembly	
Part Description	Part#
Conduit Box	118D4408AD2

Mechanical Accessories	
Part Description	Part#
Brake	
Tachometer	

