



GE INDUSTRIAL MOTORS
a **WOLONG** company

Product Technical Information

March 10, 2023

Data shown is for the current revision model #. Ensure your nameplate model # matches.

Model Number:	5KS364DAJ6054
Catalog Number:	V4465
Instruction Manual:	GEI-M1045
Connection Diagram:	GEM2034E-FIG9
Outline Drawing:	148CB36VMHKBCAA0001

Accessory Connection Diagrams

Bearing Thermocouple:	None	Heater:	3027JE-1C
RTD:	None	Thermistor:	None
Thermostat:	None	Winding Thermocouple:	None
Bearing RTD:	None		

Table of Contents

Specification	01
Performance Characteristics	02
Outline Drawing	03
Connection Drawing(s)	04
Spare parts	05

Marks:

MODEL NUMBER:	5KS364DAJ6054	Estimated Weight:	800 Lbs
Outline Drawing:	148CB36VMHKBCAA0001	Time Rating:	CONT
Connection Diagram:	GEM2034E-FIG9	Enclosure:	WPI
Instruction Book:	GEI-M1045	Encl Construction:	OPEN
Design Code:	36BD1236AA	Ambient Max(°C):	40
Type:	KS	Alt Ambient Max(°C):	--
Frame:	L364TP16	Insulation Class:	H
Phases:	3	NEMA Design:	B
Poles:	4	Nominal Efficiency:	95.0 %
Output Power:	60HP 44.4KW	Guaranteed Efficiency:	94.1 %
RPM:	1785	3/4 Load Efficiency:	--
Voltage:	200-230/460	KVA Code:	G
Hertz:	60	Max KVAR:	22.3
Amps - FL:	162.0-146.8/73.4	Power Factor:	81.0
Service Factor:	1.15	Bearing - DE:	6212C3
Alt Service Factor:	--	Bearing - ODE:	235A2523AD01

Enclosure is Weather Protected One

Stamped Nameplate Notes:

NEMA ENCLOSURE WP-I, CSA ENCL DP
HTR LDS HE1-HE2 115V 100W
ROT CCW FACING ODE LEAD/PH SEQ 1-2-3/1-2-3
INVERTER DUTY PER NEMA MG1 PART 31
ALTERNATE RATING FOR PWM CONTROL:1.0SF 40C AMBIENT
VAR TORQUE RANGE 5-60 HZ
UPPER BRG LUBE OIL: 3.7 QTS
AMB 0 TO 40 DEG C : ISO 32(MINERAL OR SYNTHETIC)
AMB -15 TO 0 DEG C : ISO 32 SYNTHETIC
SUITABLE FOR 50 HP, 190/380V, 50 HZ,
148.0/73.9 AMPS AND 1485 RPM AT 1.0 SF



Additional Information:

4P, VERT HOLLOW SHAFT HIGH THRUST (1D)
C/BOX 346 CU IN - 3.00" NPT
OIL RESISTANT SLEEVING ON LEADS
115V HTR LDS TO MAIN CONDUIT BOX
BEARING LIFE 8760 HRS AT 6244 LB THRUST
CG:15.23 IN FROM P-BASE FACE, STAT DEF:0.0033 IN
RCF:3300 CPM AT C/BOX SIDE, 3270 CPM AT
90 DEG FROM C/ BOX SIDE
NON-REVERSE BALL CARRIER,
BOLTED COUPLING, BX = 1.188 IN, EW= 0.250 IN
FIRE PUMP MOTOR
ESTIMATED SOUND PRESSURE < 80 DBA@ 1 METER



Performance Characteristics

1st Winding 1st Connection

Design: 36BD1236AA

Marks:

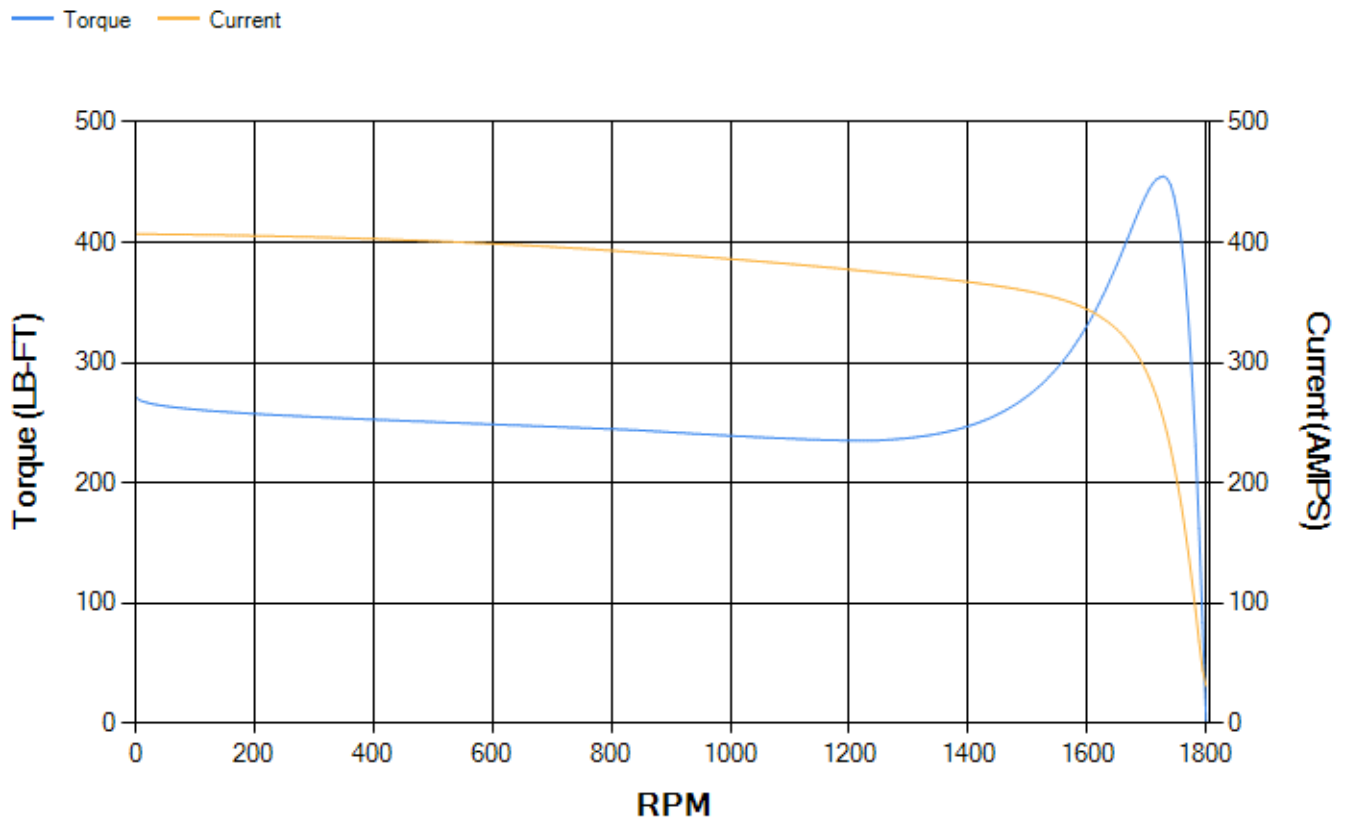
LOAD %	125.0	115.0	100.0	75.0	50.0	25.0	0.0
% EFF	94.1	94.29	94.69	94.53	93.81	90.35	0.00
% PF	83.31	82.68	81.16	76.27	65.76	43.46	4.06
AMPS	89.54	82.84	72.88	58.41	45.52	35.75	31.07

TORQ(FL)#FT	176.61	TORQ(LR)%FL	153.89	TORQ(BD)%FL	256.82
AMPS(LR)	406.96	PF AT START	0.3		

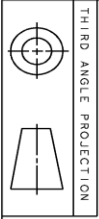
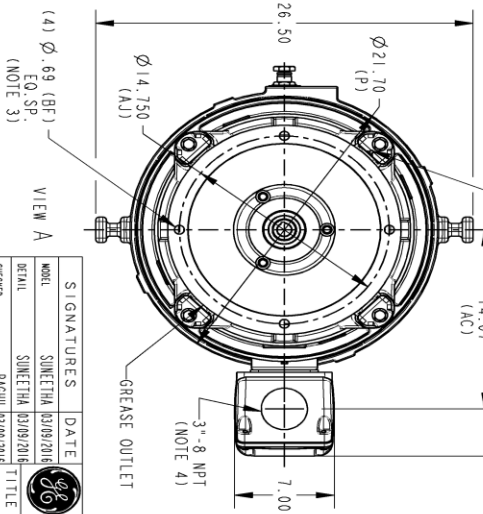
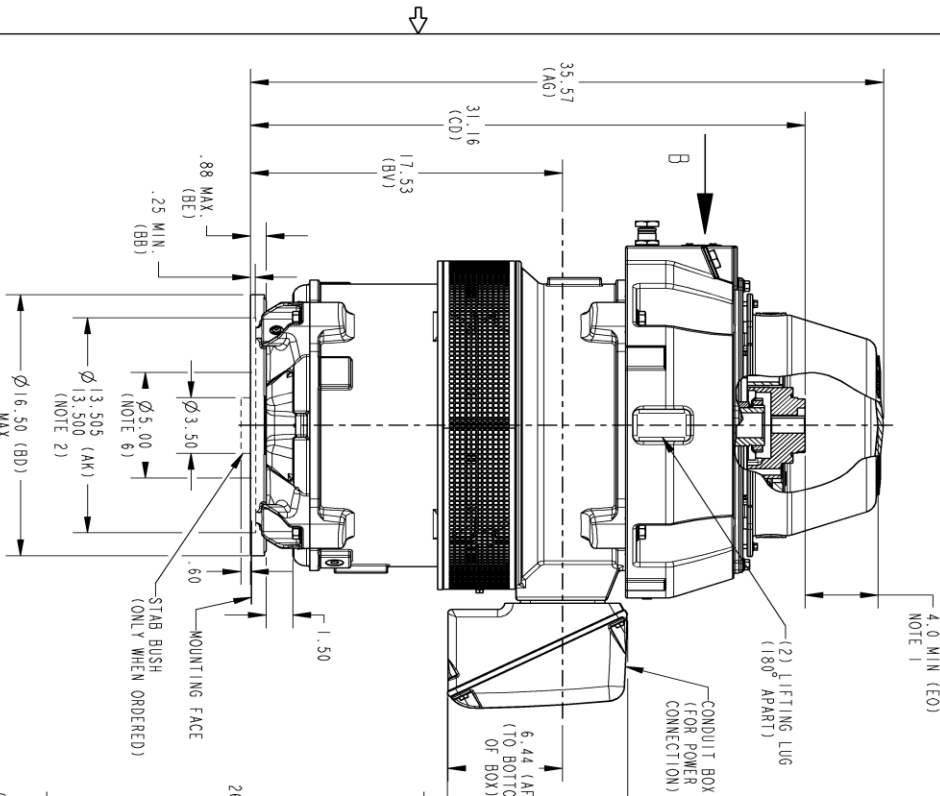
This motor is capable of two cold or one hot start with a maximum connected load inertia of 1534 Lb-Ft Sq (64.58 Kg-meter Sq)at 100% voltage, where the load torque varies with the square of the speed. Acceleration time with maximum inertia and the above load type is 44 seconds. Safe stall time at 100% voltage is 74 seconds cold, 54 seconds hot. Rotor inertia is 11.09 Lb-Ft Sq (0.47 Kg-meter Sq).

Open Circuit A-C:	0.641	Short Circuit D-C:	0.026
Short Circuit A-C:	0.041	X/R Ratio:	9.689
Stator Slots:	60	Rotor Slots:	50

Speed Torque Current Curve (First Connection, First Speed)



Marks:

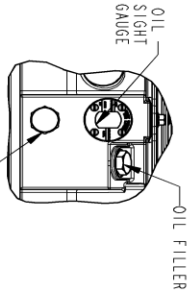


SIZE DRAWING NO. B
 148CB36VMHKBCAA0001 002

REVISIONS				
REV.	DESCRIPTION	DATE	APPROVED	BY
1	ISAC #17-0691	09/11/2017	RAJU	
2	ISAC #18-0869	02/06/19	PRASHANTH	

NOTES:

1. THE TOTAL HEIGHT OF THE PUMP SHAFT AND LOCKING NUT IS ABOVE THE COUPLING MUST NOT EXCEED THIS DIMENSION.
2. TOLERANCE ON FACE RUNOUT AND PERMISSIBLE ECCENTRICITY OF MOUNTING RABBIT ARE .001 1.1R
3. CENTRE OF MOUNTING BOLTS HOLES WITHIN 0.025 OF ANGULAR 4 DIAMETRICAL
4. PROVIDED MOUNTING CONDITIONS PERMIT, CONDUIT BOX MAY BE TURNED SO THAT ENTRANCE CAN BE MADE UPWARD, DOWNWARD OR FROM EITHER SIDE.
5. FOR ESTIMATING ONLY UNLESS ENDORSED FOR CONSTRUCTION.
6. MAINTAIN MINIMUM CLEARANCE FOR SHAFT SLINGER.



DIMENSIONS IN INCHES
NEMA TYPE P BASE

COUPLING DIMENSIONS					
KEY WAY			KEY WAY		
BY	BZ	EW	R	NM	
1.502-1.501	2.125 0.315	1.619/1.669	.562		
1.439-1.438	2.125 0.315	1.615/1.605	.562		
1.292-1.291	1/4-20	1.425/1.415	.562		
1.252-1.251					
1.189-1.188	1.750 0.250	1.314/1.304	.438		
1.002-1.001	#10-32	1.124/1.114	.438		

SIGNATURES	DATE	GE INDUSTRIAL MOTORS a wolong company	
MODEL: SIMELTA	03/09/2016	OUTLINE, WPI NEMA 364/365 HOLLOW SHAFT, HIGH THRUST 6550 BD, 346 CU IN C/BOX	
DETAIL: SIMELTA	03/09/2016		
DESIGN: RAGHU	03/09/2016		
ENG: RAGHU	03/09/2016		
QUALITY: RAGHU	03/09/2016		
SOLID MODEL: 148CB36VMHKBCAA0001 SCALE: 0.120 REF. No.: 148CB36VMHKBCAA0001		STRATEGY: B 002	REV 1 002

Marks:

Connection Diagram
GEM2034E-FIG9



Heater Connection
3027JE-1C



End shield Assembly		
Part Description	DE Side Part#	ODE Side Part#
End Shield	115E7255AA1	115E7259LK-G01
Bearing	235A2509BE01	235A2523AD01
Slinger/Inproseal	235A2300FM1	

Fan & Fan Cover Assembly	
Part Description	Part#
Fan	
Fan Cover	161C1053AA1

Conduit & Accessories Box Assembly	
Part Description	Part#
Conduit Box	149C4429AA2

Mechanical Accessories	
Part Description	Part#
Brake	
Tachometer	

