



GE INDUSTRIAL MOTORS
a **WOLONG** company

Product Technical Information

February 17, 2023

Data shown is for the current revision model #. Ensure your nameplate model # matches.

| | |
|----------------------------|-----------------------|
| Model Number: | 5KS365DAJ6077A |
| Catalog Number: | V4468 |
| Instruction Manual: | GEI-M1045 |
| Connection Diagram: | GEM2034E-FIG9 |
| Outline Drawing: | 148CB36VMGKCCAA0001 |

Accessory Connection Diagrams

| | | | |
|------------------------------|------|------------------------------|-----------|
| Bearing Thermocouple: | None | Heater: | 3027JE-1C |
| RTD: | None | Thermistor: | None |
| Thermostat: | None | Winding Thermocouple: | None |
| Bearing RTD: | None | | |

Table of Contents

| | |
|-----------------------------|----|
| Specification | 01 |
| Performance Characteristics | 02 |
| Outline Drawing | 03 |
| Connection Drawing(s) | 04 |
| Spare parts | 05 |

Marks:

| | | | |
|----------------------------|-----------------------|-------------------------------|--------------|
| MODEL NUMBER: | 5KS365DAJ6077A | Estimated Weight: | 830 Lbs |
| Outline Drawing: | 148CB36VMGKCCAA0001 | Time Rating: | CONT |
| Connection Diagram: | GEM2034E-FIG9 | Enclosure: | WPI |
| Instruction Book: | GEI-M1045 | Encl Construction: | OPEN |
| Design Code: | 36BD1237AA | Ambient Max(°C): | 40 |
| Type: | KS | Alt Ambient Max(°C): | -- |
| Frame: | L365TP12 | Insulation Class: | H |
| Phases: | 3 | NEMA Design: | B |
| Poles: | 4 | Nominal Efficiency: | 95.0 % |
| Output Power: | 75HP 55.5KW | Guaranteed Efficiency: | 94.1 % |
| RPM: | 1785 | 3/4 Load Efficiency: | -- |
| Voltage: | 200-230/460 | KVA Code: | G |
| Hertz: | 60 | Max KVAR: | 27.8 |
| Amps - FL: | 202.0-183.4/91.7 | Power Factor: | 81.0 |
| Service Factor: | 1.15 | Bearing - DE: | 6212C3 |
| Alt Service Factor: | -- | Bearing - ODE: | 235A2523AD01 |

Enclosure is Weather Protected One

Stamped Nameplate Notes:

NEMA ENCLOSURE WP-I, CSA ENCL DP
 HTR LDS HE1-HE2 115V 100W
 ROT CCW FACING ODE LEAD/PH SEQ 1-2-3/1-2-3
 INVERTER DUTY PER NEMA MG1 PART 31
 ALTERNATE RATING FOR PWM CONTROL:1.0SF 40C AMBIENT
 VAR TORQUE RANGE 5-60 HZ
 UPPER BRG LUBE OIL: 3.7 QTS
 AMB 0 TO 40 DEG C : ISO 32(MINERAL OR SYNTHETIC)
 AMB -15 TO 0 DEG C : ISO 32 SYNTHETIC
 SUITABLE FOR 60 HP, 190/380V, 50 HZ,
 178.0/88.8 AMPS AND 1485 RPM AT 1.0 SF



Additional Information:

4P, VERT HOLLOW SHAFT HIGH THRUST (1D)
C/BOX 700 CU IN - 3.00" NPT
OIL RESISTANT SLEEVING ON LEADS
115V HTR LDS TO MAIN CONDUIT BOX
BEARING LIFE 8760 HRS AT 6244 LB THRUST
CG:15.23 IN FROM P-BASE FACE, STAT DEF:0.0033 IN
RCF:3300 CPM AT C/BOX SIDE, 3270 CPM AT
90 DEG FROM C/ BOX SIDE
NON-REVERSE BALL CARRIER,
BOLTED COUPLING, BX = 1.501 IN, EW= 0.375 IN
FIRE PUMP MOTOR
ESTIMATED SOUND PRESSURE < 80 DBA@ 1 METER



Performance Characteristics

1st Winding 1st Connection

Design: 36BD1237AA

Marks:

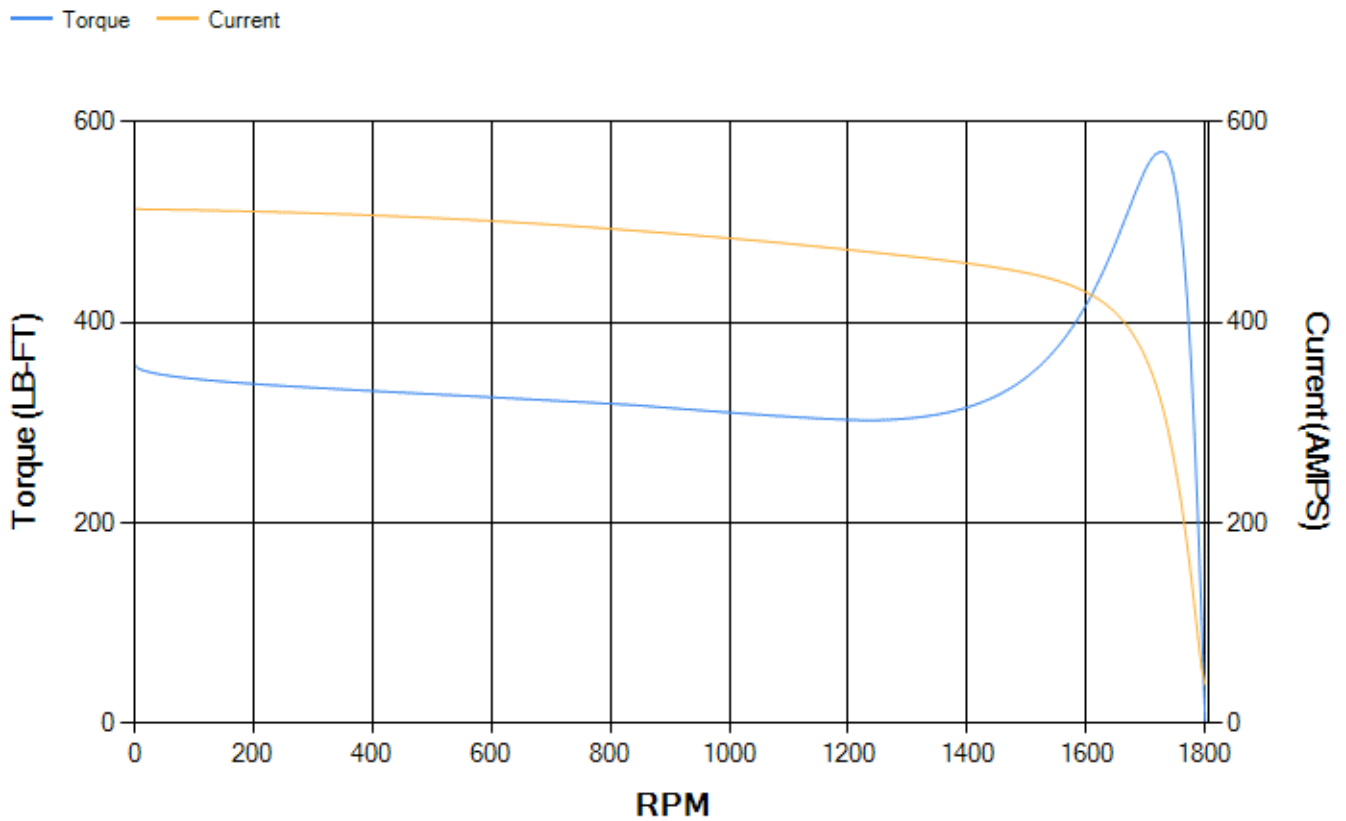
| LOAD % | 125.0 | 115.0 | 100.0 | 75.0 | 50.0 | 25.0 | 0.0 |
|--------|--------|--------|-------|-------|-------|-------|-------|
| % EFF | 94.18 | 94.39 | 94.83 | 94.74 | 94.15 | 91.01 | 0.00 |
| % PF | 83.3 | 82.68 | 81.16 | 76.27 | 65.72 | 43.3 | 3.71 |
| AMPS | 111.84 | 103.44 | 90.98 | 72.85 | 56.73 | 44.53 | 38.77 |

| | | | | | |
|--------------------|--------|--------------------|--------|--------------------|--------|
| TORQ(FL)#FT | 220.86 | TORQ(LR)%FL | 162.11 | TORQ(BD)%FL | 257.68 |
| AMPS(LR) | 513.21 | PF AT START | 0.31 | | |

This motor is capable of two cold or one hot start with a maximum connected load inertia of 1597 Lb-Ft Sq (67.23 Kg-meter Sq) at 100% voltage, where the load torque varies with the square of the speed. Acceleration time with maximum inertia and the above load type is 35 seconds. Safe stall time at 100% voltage is 64 seconds cold, 42 seconds hot. Rotor inertia is 12.61 Lb-Ft Sq (0.53 Kg-meter Sq).

| | | | |
|---------------------------|-------|---------------------------|-------|
| Open Circuit A-C: | 0.614 | Short Circuit D-C: | 0.025 |
| Short Circuit A-C: | 0.038 | X/R Ratio: | 9.522 |
| Stator Slots: | 60 | Rotor Slots: | 50 |

Speed Torque Current Curve (First Connection, First Speed)



Marks:

"DO NOT USE, ONLY FOR RENEWABLE PARTS".

© COPYRIGHT 2018 Wuling Electric America LLC AND/OR ITS AFFILIATES. All rights reserved. This document and the information it contains is the property of Wuling Electric America LLC and its affiliates. It has been provided solely for the information of the customer. No warranty is made by Wuling Electric America LLC. Wuling Electric America LLC and its affiliates are not responsible for any errors or omissions. This information is strictly prohibited except as expressly authorized in writing by Wuling Electric America LLC.

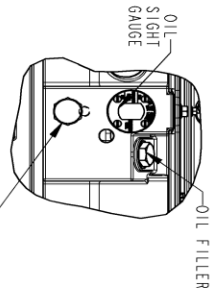
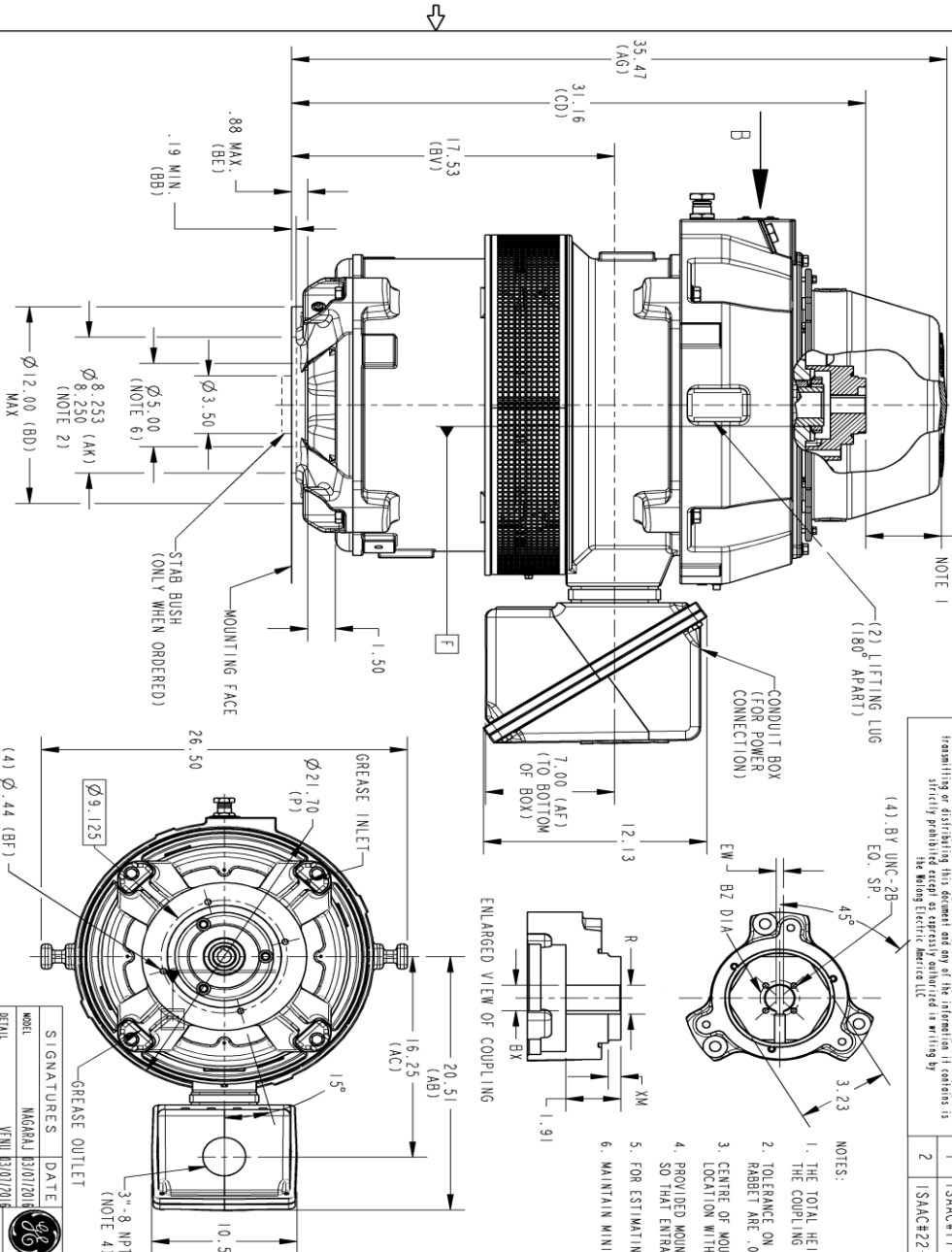
PROPRIETARY INFORMATION
148CB36VMGKCCA0001 002

REVISIONS

| REV. | DESCRIPTION | DATE | APPROVED |
|------|---------------|-------------------|----------|
| 1 | ISAAC#17-0691 | 09/11/2017 | RAGHU |
| 2 | ISAAC#22-0691 | JANDEV 11/28/2022 | RAGHU |

NOTES:

- THE TOTAL HEIGHT OF THE PUMP SHAFT AND LOCKING NUT IS ABOVE THE COUPLING MUST NOT EXCEED THIS DIMENSION.
- TOLERANCE ON FACE RUNOUT AND PERMISSIBLE ECCENTRICITY OF MOUNTING RABBIT ARE .004 T.1.R
- CENTRE OF MOUNTING BOLTS HOLES WITHIN 0.025 OF ANGULAR & DIAMETRICAL LOCATION WITHIN REFERENCE TO THE CENTRELINE OF MOUNTING RABBIT.
- PROVIDED MOUNTING CONDITIONS PERMIT, CONDUIT BOX MAY BE TURNED SO THAT ENTRANCE CAN BE MADE UPWARD, DOWNWARD OR FROM EITHER SIDE.
- FOR ESTIMATING ONLY UNLESS ENDORSED FOR CONSTRUCTION.
- MAINTAIN MINIMUM CLEARANCE FOR SHAFT SLINGER.



VIEW B

OIL FILLER
OIL SLIGHT GAUGE

OIL DRAIN

DIMENSIONS IN INCHES
NEMA TYPE P BASE

| COUPLING DIMENSIONS | | KEY WAY | |
|---------------------|--------------------|-------------|------|
| BY | BZ | EW | R |
| 1.502-1.501 | 2.125 0.315 | 1.619/1.689 | .562 |
| 1.439-1.438 | 2.125 0.315 | 1.615/1.605 | .562 |
| 1.252-1.251 | 1/4-20 1.750 0.315 | 1.425/1.415 | .562 |
| 1.252-1.251 | 1.750 0.250 | 1.377/1.367 | .438 |
| 1.189-1.188 | 1.750 0.250 | 1.314/1.304 | .438 |
| 1.002-1.001 | #10-32 1.315 0.250 | 1.124/1.114 | .438 |

VIEW A

| SIGNATURES | DATE |
|------------------|------|
| MAGRAJ B31012018 | |
| VENU B31012018 | |
| SACHIN B31012018 | |
| RAGHU B31012018 | |
| WJ | |
| QUALITY | |
| ISSUED | |
| SHEET DRAWING | |

GE INDUSTRIAL MOTORS
a WULING company

OUTLINE, WPI
NEMA 364/365 HOLLOW SHAFT, HIGH THRUST
12 BD, 700 CU IN C/BOX

148CB36VMGKCCA0001 002

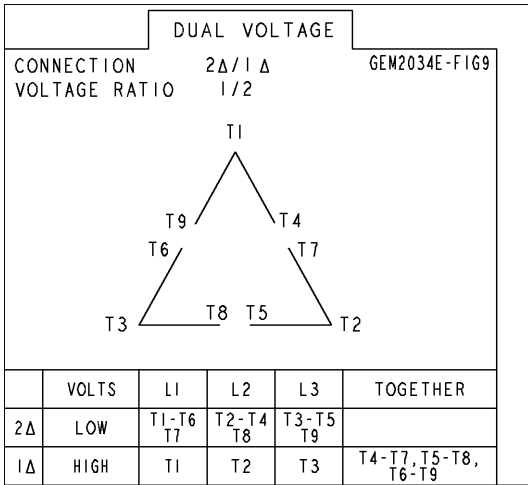
SCALE: 0.120 REF. NO. SHEET 1 OF 1



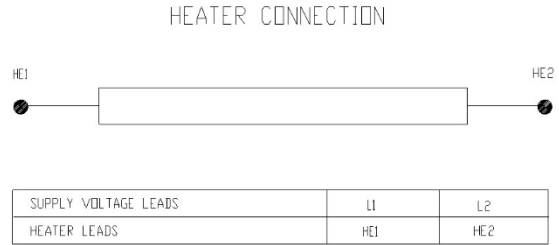
SHEET 1 OF 1

Marks:

Connection Diagram
GEM2034E-FIG9



Heater Connection
3027JE-1C



End shield Assembly

| Part Description | DE Side Part# | ODE Side Part# |
|-------------------|---------------|----------------|
| End Shield | 115E7254AC1 | 115E7259LK-G01 |
| Bearing | 235A2509BE01 | 235A2523AD01 |
| Slinger/Inproseal | 235A2300FM1 | |

Fan & Fan Cover Assembly

| Part Description | Part# |
|------------------|-------------|
| Fan | |
| Fan Cover | 161C1053AA1 |

Conduit & Accessories Box Assembly

| Part Description | Part# |
|------------------|-------------|
| Conduit Box | 118D4408AD2 |

Mechanical Accessories

| Part Description | Part# |
|------------------|-------|
| Brake | |
| Tachometer | |

