



**GE INDUSTRIAL MOTORS**  
a **WOLONG** company

# Product Technical Information

February 17, 2023

Data shown is for the current revision model #. Ensure your nameplate model # matches.

<b>Model Number:</b>	<b>5KS404DAJ6062</b>
<b>Catalog Number:</b>	<b>V4471</b>
<b>Instruction Manual:</b>	GEI-M1045
<b>Connection Diagram:</b>	GEM2034E-FIG9
<b>Outline Drawing:</b>	148CB40VMHKCCAA0001

## Accessory Connection Diagrams

<b>Bearing Thermocouple:</b>	None	<b>Heater:</b>	3027JE-1C
<b>RTD:</b>	None	<b>Thermistor:</b>	None
<b>Thermostat:</b>	None	<b>Winding Thermocouple:</b>	None
<b>Bearing RTD:</b>	None		

## Table of Contents

Specification	01
Performance Characteristics	02
Outline Drawing	03
Connection Drawing(s)	04
Spare parts	05

Marks:

<b>MODEL NUMBER:</b>	<b>5KS404DAJ6062</b>	<b>Estimated Weight:</b>	1160 Lbs
<b>Outline Drawing:</b>	148CB40VMHKCCAA0001	<b>Time Rating:</b>	CONT
<b>Connection Diagram:</b>	GEM2034E-FIG9	<b>Enclosure:</b>	WPI
<b>Instruction Book:</b>	GEI-M1045	<b>Encl Construction:</b>	OPEN
<b>Design Code:</b>	40BD1195A	<b>Ambient Max(°C):</b>	40
<b>Type:</b>	KS	<b>Alt Ambient Max(°C):</b>	--
<b>Frame:</b>	L404TP16	<b>Insulation Class:</b>	H
<b>Phases:</b>	3	<b>NEMA Design:</b>	B
<b>Poles:</b>	4	<b>Nominal Efficiency:</b>	94.1 %
<b>Output Power:</b>	100HP 74KW	<b>Guaranteed Efficiency:</b>	93.0 %
<b>RPM:</b>	1780	<b>3/4 Load Efficiency:</b>	--
<b>Voltage:</b>	200-230/460	<b>KVA Code:</b>	G
<b>Hertz:</b>	60	<b>Max KVAR:</b>	30.6
<b>Amps - FL:</b>	269.0-234.0/117.0	<b>Power Factor:</b>	84.5
<b>Service Factor:</b>	1.15	<b>Bearing - DE:</b>	6215C3
<b>Alt Service Factor:</b>	--	<b>Bearing - ODE:</b>	235A2532AA01

Enclosure is Weather Protected One

---

Stamped Nameplate Notes:

NEMA ENCLOSURE WP-I, CSA ENCL DP  
HTR LDS HE1-HE2 115V 100W  
ROT CCW FACING ODE LEAD/PH SEQ 1-2-3/1-2-3  
INVERTER DUTY PER NEMA MG1 PART 31  
ALTERNATE RATING FOR PWM CONTROL:1.0SF 40C AMBIENT  
VAR TORQUE RANGE 5 -60 HZ  
UPPER BRG LUBE OIL: 6 QTS  
AMB 0 TO 40 DEG C : ISO 32(MINERAL OR SYNTHETIC)  
AMB -15 TO 0 DEG C : ISO 32 SYNTHETIC  
SUITABLE FOR 75 HP, 190/380V, 50 HZ,  
215.0/108.0 AMPS AND 1480 RPM AT 1.0 SF



**Additional Information:**

4P, VERT HOLLOW SHAFT HIGH THRUST (2D)  
C/BOX 700 CU IN - 3.00" NPT  
OIL RESISTANT SLEEVING ON LEADS  
115V HTR LDS TO MAIN CONDUIT BOX  
BEARING LIFE 8760 HRS AT 14600 LB THRUST  
BEARING LIFE 10339 HRS AT 14000 LB THRUST  
CG:18.50 IN FROM P-BASE FACE, STAT DEF:0.0032 IN  
RCF:3240 CPM AT C/BOX SIDE, 3360 CPM AT  
90 DEG FROM C/ BOX SIDE  
NON-REVERSE BALL CARRIER,  
BOLTED COUPLING, BX = 1.188 IN, EW= 0.250 IN  
FIRE PUMP MOTOR  
ESTIMATED SOUND PRESSURE < 85 DBA@ 1 METER



**Performance Characteristics**

1st Winding 1st Connection

**Design: 40BD1195A**

**Marks:**

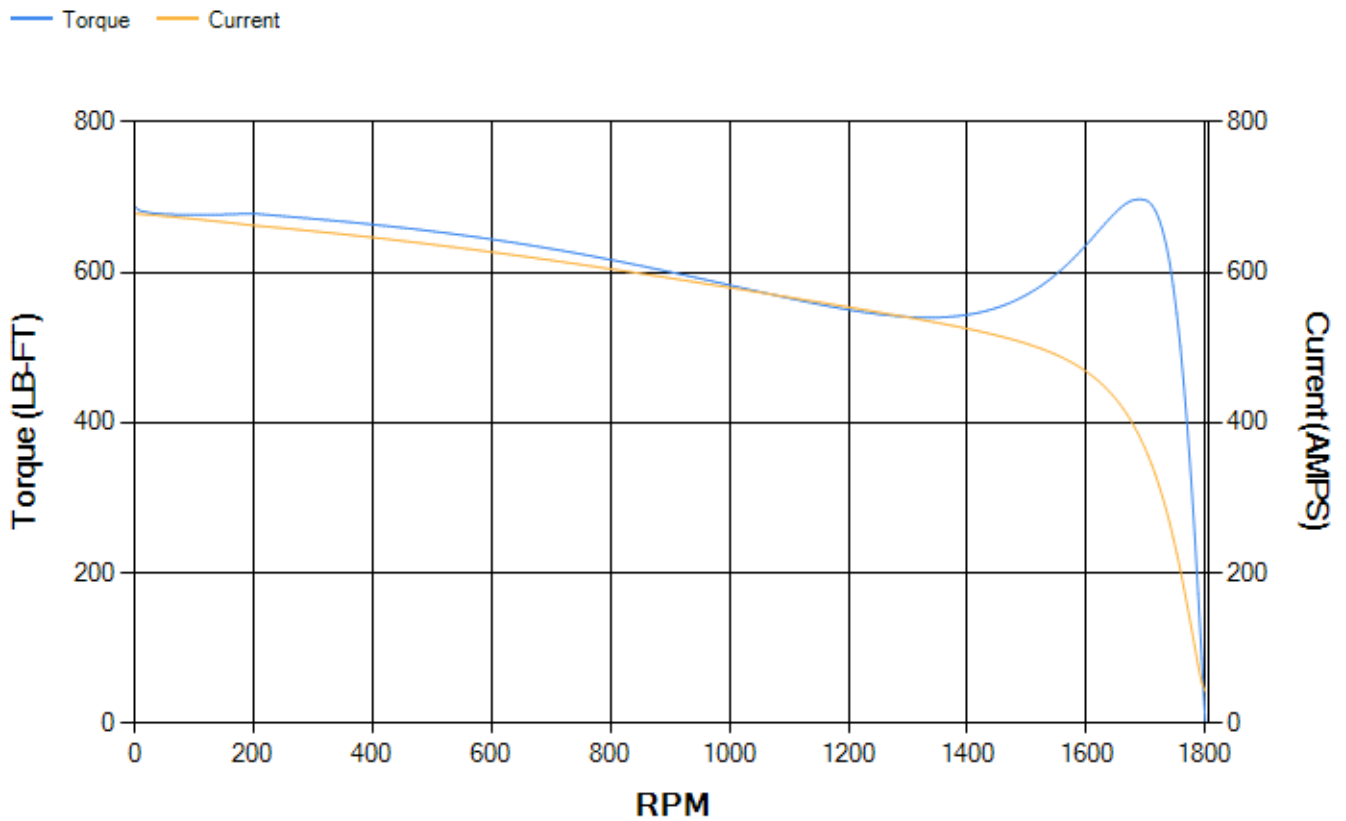
LOAD %	125.0	115.0	100.0	75.0	50.0	25.0	0.0
% EFF	93.84	94.11	94.64	94.68	94.25	91.39	0.00
% PF	85.45	85.17	84.25	80.67	71.86	50.07	4.44
AMPS	145.89	134.28	117.39	91.9	69.1	51.13	42.61

<b>TORQ(FL)#FT</b>	295.31	<b>TORQ(LR)%FL</b>	233.12	<b>TORQ(BD)%FL</b>	235.69
<b>AMPS(LR)</b>	678.32	<b>PF AT START</b>	0.43		

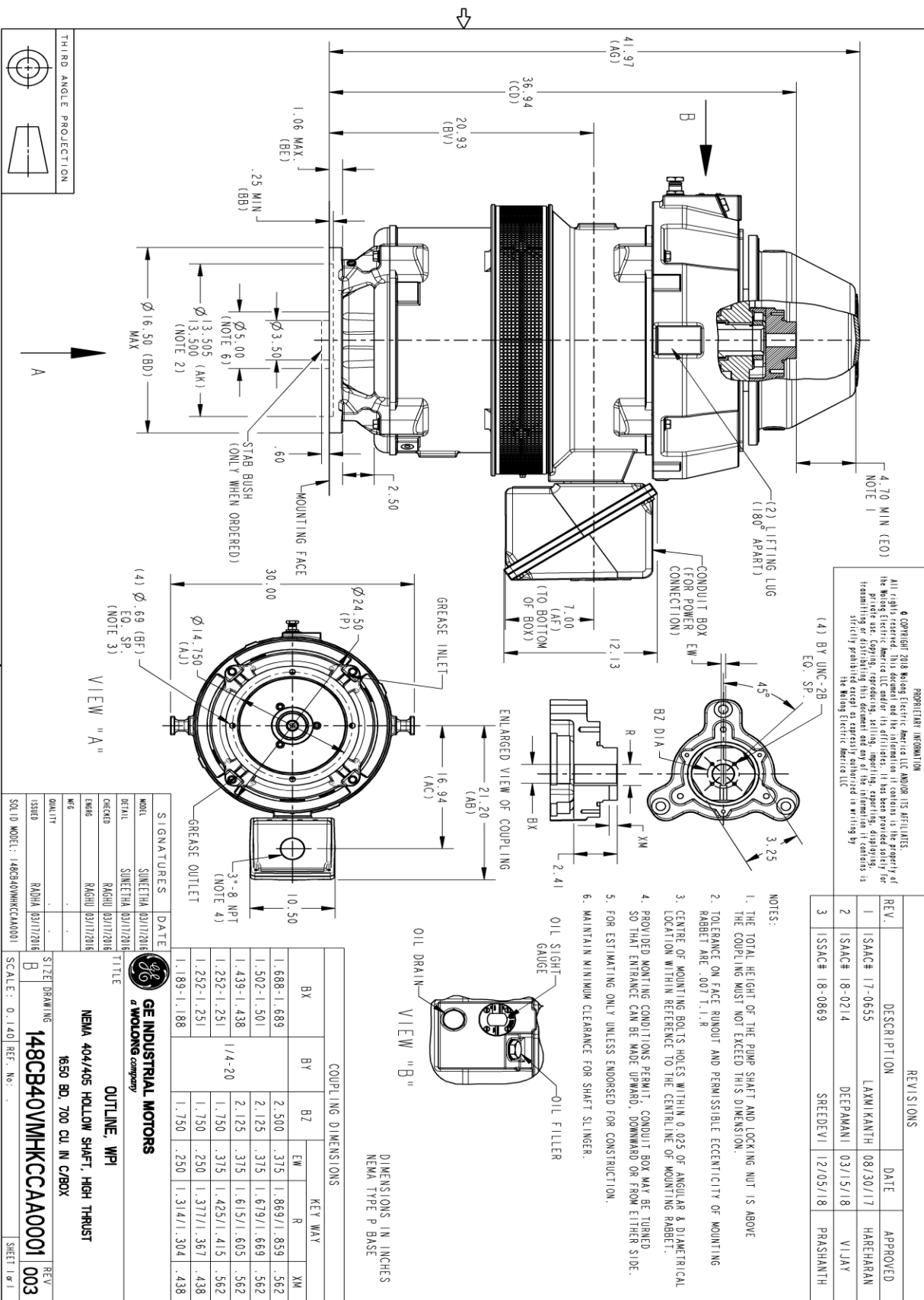
This motor is capable of two cold or one hot start with a maximum connected load inertia of 1778 Lb-Ft Sq (74.85 Kg-meter Sq) at 100% voltage, where the load torque varies with the square of the speed. Acceleration time with maximum inertia and the above load type is 20 seconds. Safe stall time at 100% voltage is 40 seconds cold, 24 seconds hot. Rotor inertia is 22.33 Lb-Ft Sq (0.94 Kg-meter Sq).

<b>Open Circuit A-C:</b>	0.577	<b>Short Circuit D-C:</b>	0.021
<b>Short Circuit A-C:</b>	0.029	<b>X/R Ratio:</b>	7.911
<b>Stator Slots:</b>	72	<b>Rotor Slots:</b>	58

**Speed Torque Current Curve (First Connection, First Speed)**



Marks:



**PROPRIETARY INFORMATION**  
 © COPYRIGHT 2018 Wolong Electric America LLC AND/OR ITS AFFILIATES.  
 All rights reserved. This document and the information it contains is the property of  
 the Wolong Electric America LLC and/or its affiliates. It has been provided solely for  
 transmission and delivery of the goods and services specified herein. It is not to be  
 reproduced, stored in a retrieval system, or transmitted in any form or by any means,  
 electronic, mechanical, photocopying, recording, or by any information storage and  
 retrieval system, without the prior written permission of Wolong Electric America LLC.  
 The Wolong Electric America LLC

REV.	DESCRIPTION	DATE	APPROVED
1	ISAC# 17-0655	08/30/17	HAREHARAN
2	ISAC# 18-0214	03/15/18	VIJAY
3	ISSAC# 18-0869	12/05/18	PRAASHANTH

- NOTES:
1. THE TOTAL HEIGHT OF THE PUMP SHAFT AND LOCKING NUT IS ABOVE THE COUPLING MUST NOT EXCEED THIS DIMENSION.
  2. TOLERANCE ON FACE RINOUT AND PERMISSIBLE ECCENTRICITY OF MOUNTING RABBIT ARE .007 ± 1.1R
  3. CENTRE OF MOUNTING BOLTS HOLES WITHIN 0.025 OF ANGULAR & DIAMETRICAL LOCATION WITHIN REFERENCE TO THE CENTRAL LINE OF MOUNTING RABBIT.
  4. PROVIDED MOUNTING CONDITIONS PERMIT, CONDUIT BOX MAY BE TURNED SO THAT ENTRANCE CAN BE MADE UPWARD, DOWNWARD OR FROM EITHER SIDE.
  5. FOR ESTIMATING ONLY UNLESS ENDORSED FOR CONSTRUCTION.
  6. MAINTAIN MINIMUM CLEARANCE FOR SHAFT SLINGER.

**COUPLING DIMENSIONS**

BX	BY	BZ	KEY WAY		
			EW	R	XM
1.688-1.689	2.500	.375	1.869/1.859	.562	.562
1.502-1.501	2.125	.375	1.679/1.669	.562	.562
1.439-1.438	1/4-20	2.125	1.615/1.605	.562	.562
1.252-1.251	1.750	.375	1.425/1.415	.438	.438
1.252-1.251	1.750	.250	1.377/1.367	.438	.438
1.189-1.188	1.750	.250	1.314/1.304	.438	.438

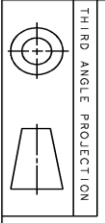
**DIMENSIONS IN INCHES**  
 NEMA TYPE P BASE

SIGNATURES	DATE
MODEL SUNEETHA 03/17/2018	
DETAIL SUNEETHA 03/17/2018	
CHECKED RAGHU 03/17/2018	
ENGNG RAGHU 03/17/2018	
DRAWN	
ISSUED	
SOLID MODEL: 148CB40VMHKCCAA0001	

**GE INDUSTRIAL MOTORS**  
 a Wolong company

**OUTLINE, WPI**  
 NEMA 404/405 HOLLOW SHAFT, HIGH THRUST  
 650 BD, 700 CU IN C/BOX

SCALE: 0.140 REF. NO. ...



SIZE: DRAWING NO. 148CB40VMHKCCAA0001 003  
 REV SHEET 1

**Marks:**

**Connection Diagram**  
**GEM2034E-FIG9**



**Heater Connection**  
**3027JE-1C**



End shield Assembly		
Part Description	DE Side Part#	ODE Side Part#
End Shield	115E7306AC1	115E7310LK-G01
Bearing	235A2513AL01	235A2532AA01
Slinger/Inproseal	235A2300HW1	

Fan & Fan Cover Assembly	
Part Description	Part#
Fan	
Fan Cover	161C1054AA1

Conduit & Accessories Box Assembly	
Part Description	Part#
Conduit Box	118D4408AD2

Mechanical Accessories	
Part Description	Part#
Brake	
Tachometer	

