



GE INDUSTRIAL MOTORS
a **WOLONG** company

Product Technical Information

May 1, 2023

Data shown is for the current revision model #. Ensure your nameplate model # matches.

Model Number:	5KS405DAJ6057
Catalog Number:	V4474
Instruction Manual:	GEI-M1045
Connection Diagram:	GEM2034E-FIG273
Outline Drawing:	148CB40VMHKCCAA0001

Accessory Connection Diagrams			
Bearing Thermocouple:	None	Heater:	3027JE-1C
RTD:	None	Thermistor:	None
Thermostat:	None	Winding Thermocouple:	None
Bearing RTD:	None		

Table of Contents

Specification	01
Performance Characteristics	02
Outline Drawing	03
Connection Drawing(s)	04
Spare parts	05

Marks:

MODEL NUMBER:	5KS405DAJ6057	Estimated Weight:	1190 Lbs
Outline Drawing:	148CB40VMHKCCAA0001	Time Rating:	CONT
Connection Diagram:	GEM2034E-FIG273	Enclosure:	WPI
Instruction Book:	GEI-M1045	Encl Construction:	OPEN
Design Code:	40BD1258B	Ambient Max(°C):	40
Type:	KS	Alt Ambient Max(°C):	--
Frame:	L405TP16	Insulation Class:	H
Phases:	3	NEMA Design:	B
Poles:	4	Nominal Efficiency:	94.5 %
Output Power:	125HP 92.5KW	Guaranteed Efficiency:	93.6 %
RPM:	1785	3/4 Load Efficiency:	--
Voltage:	460/575	KVA Code:	G
Hertz:	60	Max KVAR:	43.0
Amps - FL:	145.0/118.0	Power Factor:	83.5
Service Factor:	1.15	Bearing - DE:	6215C3
Alt Service Factor:	--	Bearing - ODE:	235A2532AA01

Enclosure is Weather Protected One

Stamped Nameplate Notes:

NEMA ENCLOSURE WP-I, CSA ENCL DP
HTR LDS HE1-HE2 115V 100W
ROT CCW FACING ODE LEAD/PH SEQ 1-2-3/1-2-3
INVERTER DUTY PER NEMA MG1 PART 31
ALTERNATE RATING FOR PWM CONTROL:1.0SF 40C AMBIENT
VAR TORQUE RANGE 5 -60 HZ
UPPER BRG LUBE OIL: 6 QTS
AMB 0 TO 40 DEG C : ISO 32(MINERAL OR SYNTHETIC)
AMB -15 TO 0 DEG C : ISO 32 SYNTHETIC



Additional Information:

4P, VERT HOLLOW SHAFT HIGH THRUST (2D)
C/BOX 700 CU IN - 3.00" NPT
OIL RESISTANT SLEEVING ON LEADS
115V HTR LDS TO MAIN CONDUIT BOX
BEARING LIFE 8760 HRS AT 14600 LB THRUST
BEARING LIFE 10339 HRS AT 14000 LB THRUST
CG:18.50 IN FROM P-BASE FACE, STAT DEF:0.0032 IN
RCF:3240 CPM AT C/BOX SIDE, 3360 CPM AT
90 DEG FROM C/ BOX SIDE
NON-REVERSE BALL CARRIER,
BOLTED COUPLING, BX = 1.188 IN, EW= 0.250 IN
FIRE PUMP MOTOR
ESTIMATED SOUND PRESSURE < 85 DBA@ 1 METER



Performance Characteristics

1st Winding 1st Connection

Design: 40BD1258B

Marks:

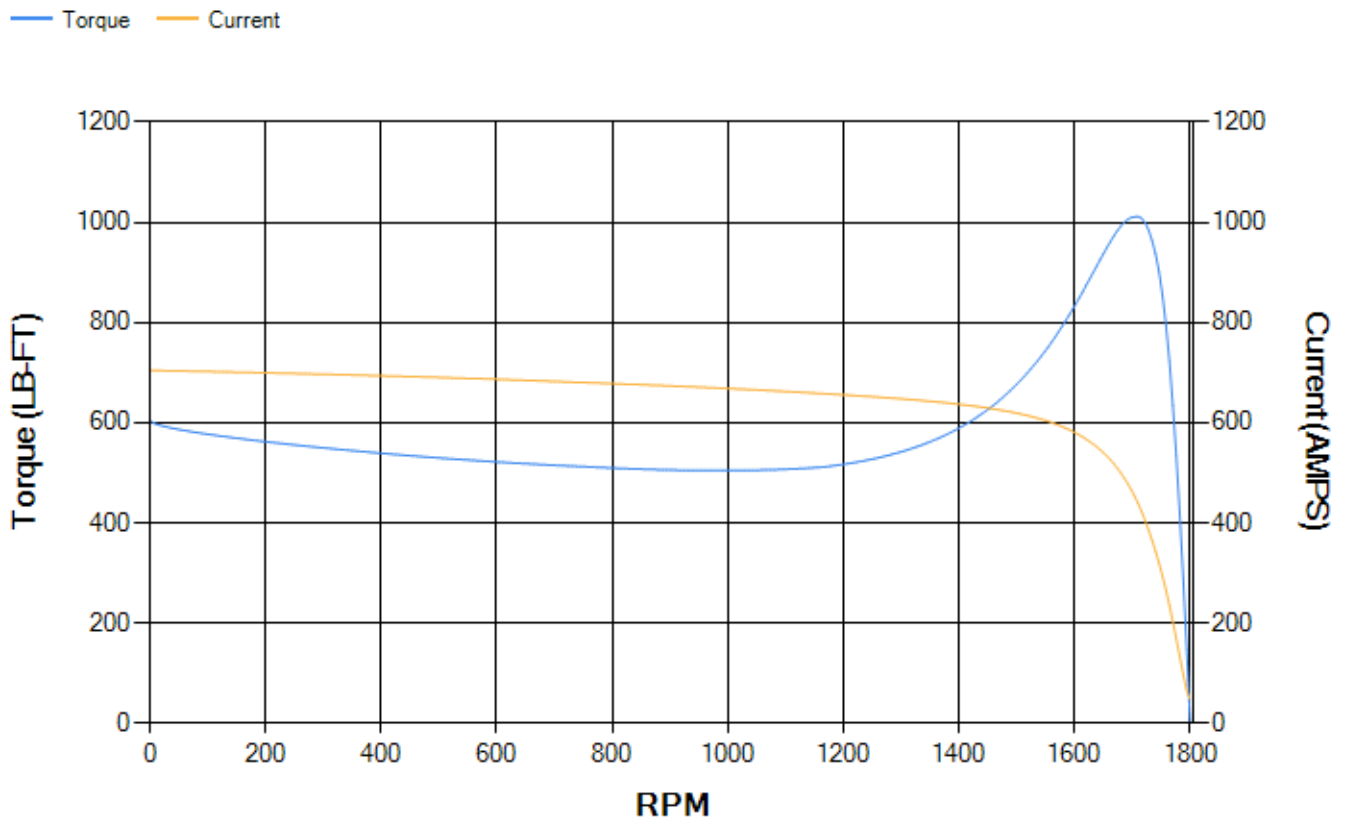
LOAD %	125.0	115.0	100.0	75.0	50.0	25.0	0.0
% EFF	94.68	94.87	95.3	95.22	94.7	91.9	0.00
% PF	85.44	84.82	83.37	78.71	68.48	45.8	3.7
AMPS	144.62	133.75	117.81	93.66	72.16	55.59	48.02

TORQ(FL)#FT	367.95	TORQ(LR)%FL	164.48	TORQ(BD)%FL	274.34
AMPS(LR)	704.48	PF AT START	0.32		

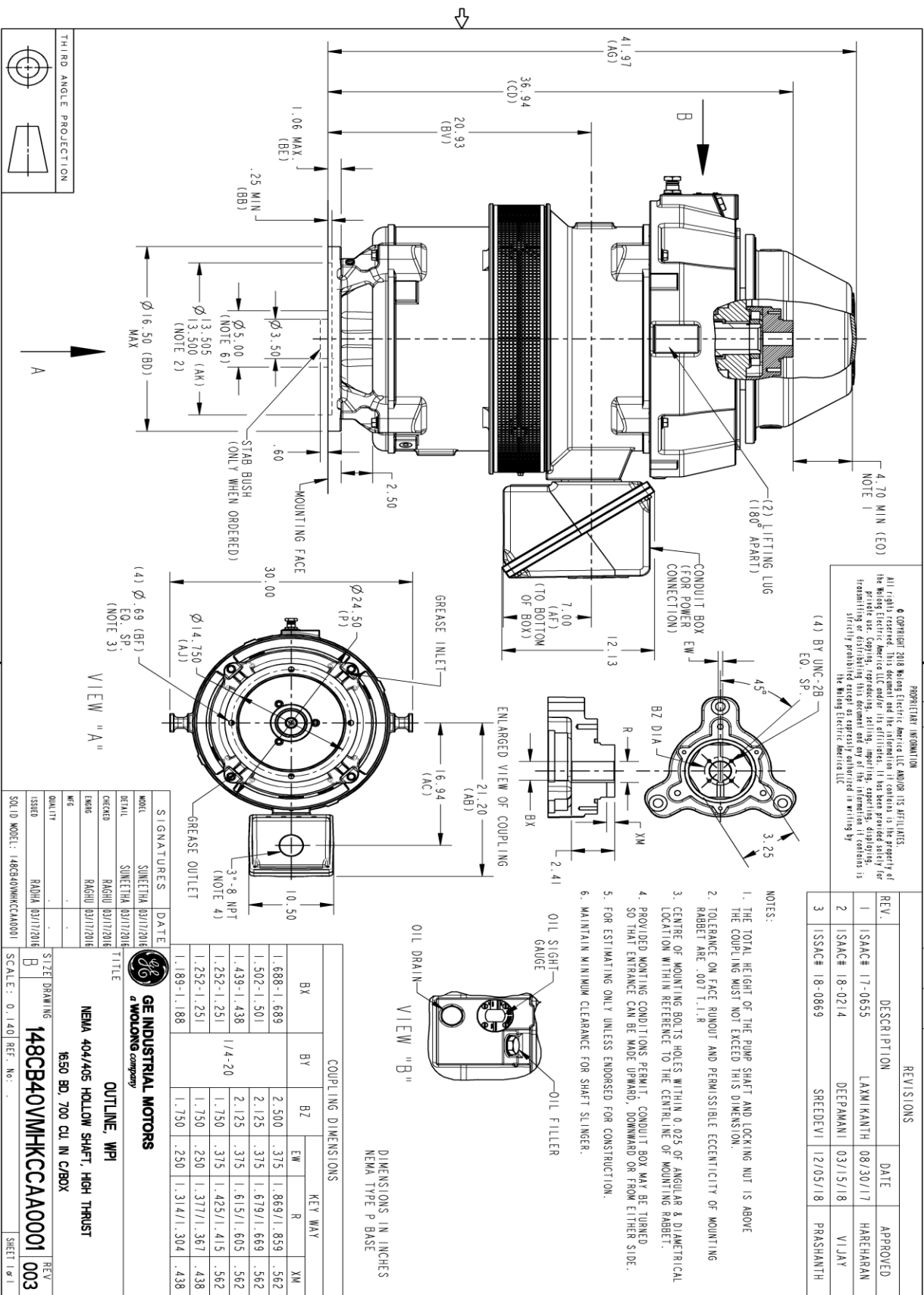
This motor is capable of two cold or one hot start with a maximum connected load inertia of 2453 Lb-Ft Sq (103.27 Kg-meter Sq)at 100% voltage, where the load torque varies with the square of the speed. Acceleration time with maximum inertia and the above load type is 31 seconds. Safe stall time at 100% voltage is 64 seconds cold, 37 seconds hot. Rotor inertia is 24.72 Lb-Ft Sq (1.04 Kg-meter Sq).

Open Circuit A-C:	0.673	Short Circuit D-C:	0.025
Short Circuit A-C:	0.042	X/R Ratio:	9.547
Stator Slots:	72	Rotor Slots:	58

Speed Torque Current Curve (First Connection, First Speed)



Marks:



PROPRIETARY INFORMATION
 All rights reserved. This document and the information it contains is the property of the Motong Electric America LLC and/or its affiliates. It has been provided solely for the use of the customer and is not to be distributed, copied, or otherwise used without the express written consent of the Motong Electric America LLC. Any other use is strictly prohibited except as expressly authorized in writing by the Motong Electric America LLC.

REV.	DESCRIPTION	DATE	APPROVED
1	ISAC# 17-0655	08/30/17	HAREHARAN
2	ISAC# 18-0214	03/15/18	VJLAY
3	ISSAC# 18-0869	12/05/18	PRAASHANTH

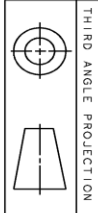
COUPLING DIMENSIONS			
BX	BY	BZ	KEY WAY
1.688-1.689	2.500	.375	1.869/1.859 .562
1.502-1.501	2.125	.375	1.679/1.669 .562
1.439-1.438	2.125	.375	1.615/1.605 .562
1.252-1.251	1.750	.375	1.425/1.415 .562
1.252-1.251	1.750	.250	1.377/1.367 .438
1.189-1.188	1.750	.250	1.314/1.304 .438

SIGNATURES	DATE
MOEL SUNEETHA	03/17/2016
DETAIL SUNEETHA	03/17/2016
DESIGN RAGHU	03/17/2016
ENG RAGHU	03/17/2016
QC	
QUALITY	
ISSUED	
SOLID MODEL:	148CB40VMHKCCA0001

GE INDUSTRIAL MOTORS
 a WOLONG company

OUTLINE, WPI
 NEMA 404/405 HOLLOW SHAFT, HIGH THRUST
 650 BD, 700 CU IN C/BOX

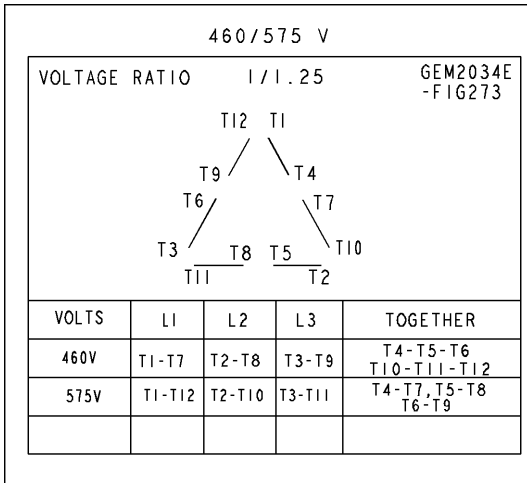
SCALE: 0.140 REF. NO. 148CB40VMHKCCA0001



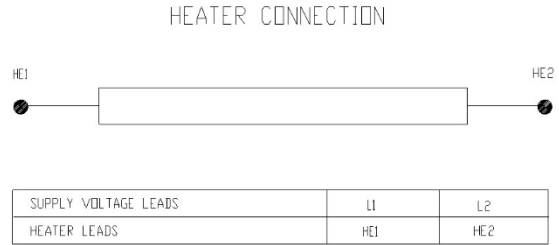
REV	DESCRIPTION	DATE	APPROVED
1	ISAC# 17-0655	08/30/17	HAREHARAN
2	ISAC# 18-0214	03/15/18	VJLAY
3	ISSAC# 18-0869	12/05/18	PRAASHANTH

Marks:

Connection Diagram
GEM2034E-FIG273



Heater Connection
3027JE-1C



End shield Assembly		
Part Description	DE Side Part#	ODE Side Part#
End Shield	115E7306AC1	115E7310LK-G01
Bearing	235A2513AL01	235A2532AA01
Slinger/Inproseal	235A2300HW1	

Fan & Fan Cover Assembly	
Part Description	Part#
Fan	
Fan Cover	161C1054AA1

Conduit & Accessories Box Assembly	
Part Description	Part#
Conduit Box	118D4408AD2

Mechanical Accessories	
Part Description	Part#
Brake	
Tachometer	

