



GE INDUSTRIAL MOTORS
a **WOLONG** company

Product Technical Information

February 17, 2023

Data shown is for the current revision model #. Ensure your nameplate model # matches.

Model Number:	5KS405DAJ7031
Catalog Number:	V4516
Instruction Manual:	GEI-M1045
Connection Diagram:	GEM2034E-FIG19
Outline Drawing:	148CB40VMHKCCAA0001

Accessory Connection Diagrams

Bearing Thermocouple:	None	Heater:	None
RTD:	None	Thermistor:	None
Thermostat:	None	Winding Thermocouple:	None
Bearing RTD:	None		

Table of Contents

Specification	01
Performance Characteristics	02
Outline Drawing	03
Connection Drawing(s)	04
Spare parts	05

Marks:

MODEL NUMBER:	5KS405DAJ7031	Estimated Weight:	1130 Lbs
Outline Drawing:	148CB40VMHKCCAA0001	Time Rating:	CONT
Connection Diagram:	GEM2034E-FIG19	Enclosure:	WPI
Instruction Book:	GEI-M1045	Encl Construction:	OPEN
Design Code:	40BD3118A	Ambient Max(°C):	40
Type:	KS	Alt Ambient Max(°C):	--
Frame:	L405TP16	Insulation Class:	H
Phases:	3	NEMA Design:	B
Poles:	6	Nominal Efficiency:	94.5 %
Output Power:	75HP 55.5KW	Guaranteed Efficiency:	93.6 %
RPM:	1190	3/4 Load Efficiency:	--
Voltage:	460	KVA Code:	G
Hertz:	60	Max KVAR:	28.7
Amps - FL:	93.2	Power Factor:	80.5
Service Factor:	1.15	Bearing - DE:	6215C3
Alt Service Factor:	--	Bearing - ODE:	235A2532AA01

Enclosure is Weather Protected One

Stamped Nameplate Notes:

NEMA ENCLOSURE WP-I, CSA ENCL DP
 ROT CCW FACING ODE LEAD/PH SEQ 1-2-3/1-2-3
 INVERTER DUTY PER NEMA MG1 PART 31
 ALTERNATE RATING FOR PWM CONTROL:1.0SF 40C AMBIENT
 VAR TORQUE RANGE 7.5-60 HZ
 UPPER BRG LUBE OIL: 6 QTS
 AMB 0 TO 40 DEG C : ISO 32(MINERAL OR SYNTHETIC)
 AMB -15 TO 0 DEG C : ISO 32 SYNTHETIC
 USABLE FOR 60 HP AT 380V 50HZ AT 1.0SF



Additional Information:

6P, VERT HOLLOW SHAFT HIGH THRUST (2D)
C/BOX 700 CU IN - 3.00" NPT
OIL RESISTANT SLEEVING ON LEADS
SHAFT GROUNDING RING MOUNTED ON DE BRG CAP
BEARING LIFE 8760 HRS AT 16516 LB THRUST
PART WINDING START
CG:18.50 IN FROM P-BASE FACE, STAT DEF:0.0029 IN
RCF:3240 CPM AT C/BOX SIDE, 3780 CPM AT
90 DEG FROM C/ BOX SIDE
NON-REVERSE BALL CARRIER,
BOLTED COUPLING, BX = 1.251 IN, EW= 0.25 IN



Performance Characteristics

1st Winding 1st Connection

Design: 40BD3118A

Marks:

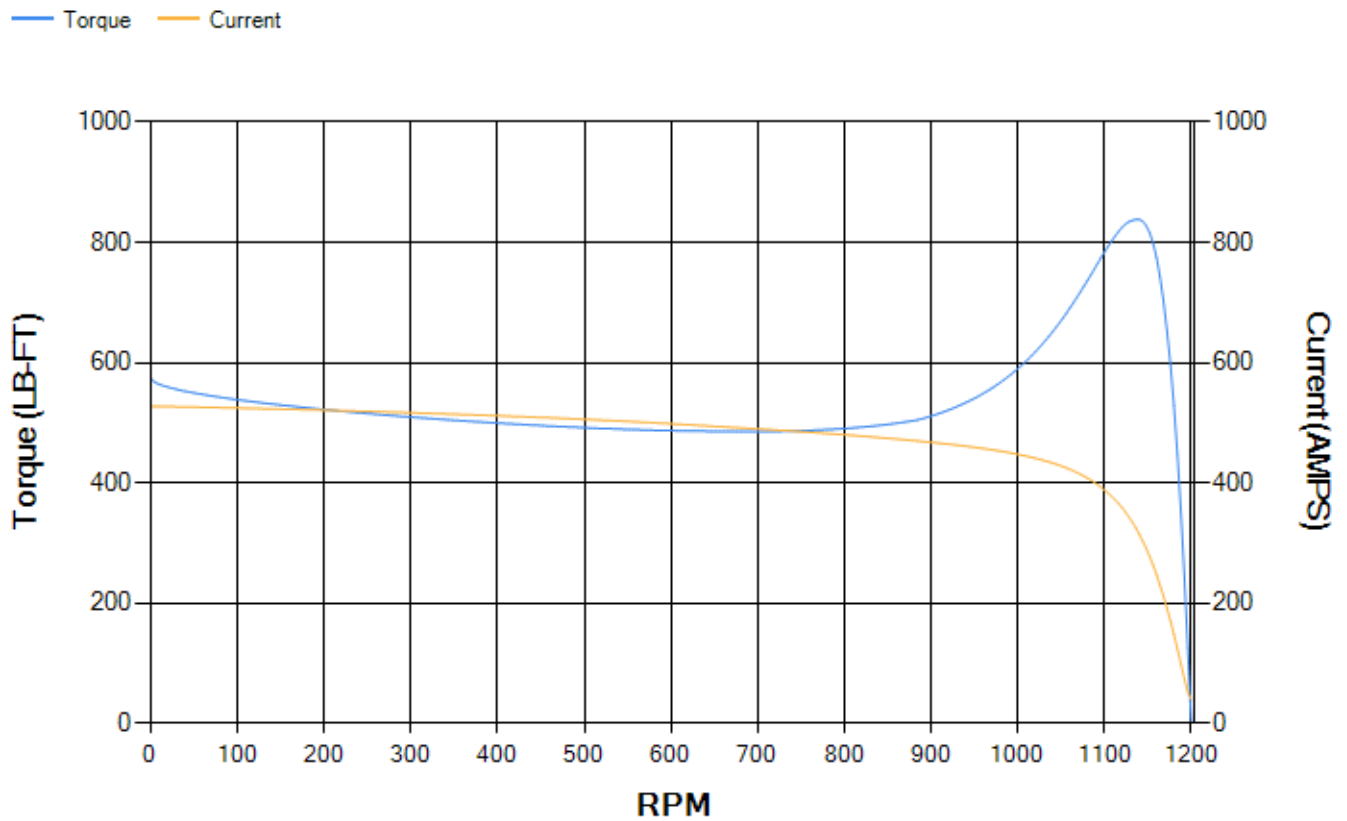
LOAD %	125.0	115.0	100.0	75.0	50.0	25.0	0.0
% EFF	93.39	93.61	94.06	93.92	93.14	89.37	0.00
% PF	82.6	81.97	80.44	75.48	64.89	42.8	4.4
AMPS	113.75	105.2	92.57	74.26	58.08	45.88	40.02

TORQ(FL)#FT	331.17	TORQ(LR)%FL	173.59	TORQ(BD)%FL	252.26
AMPS(LR)	527.35	PF AT START	0.35		

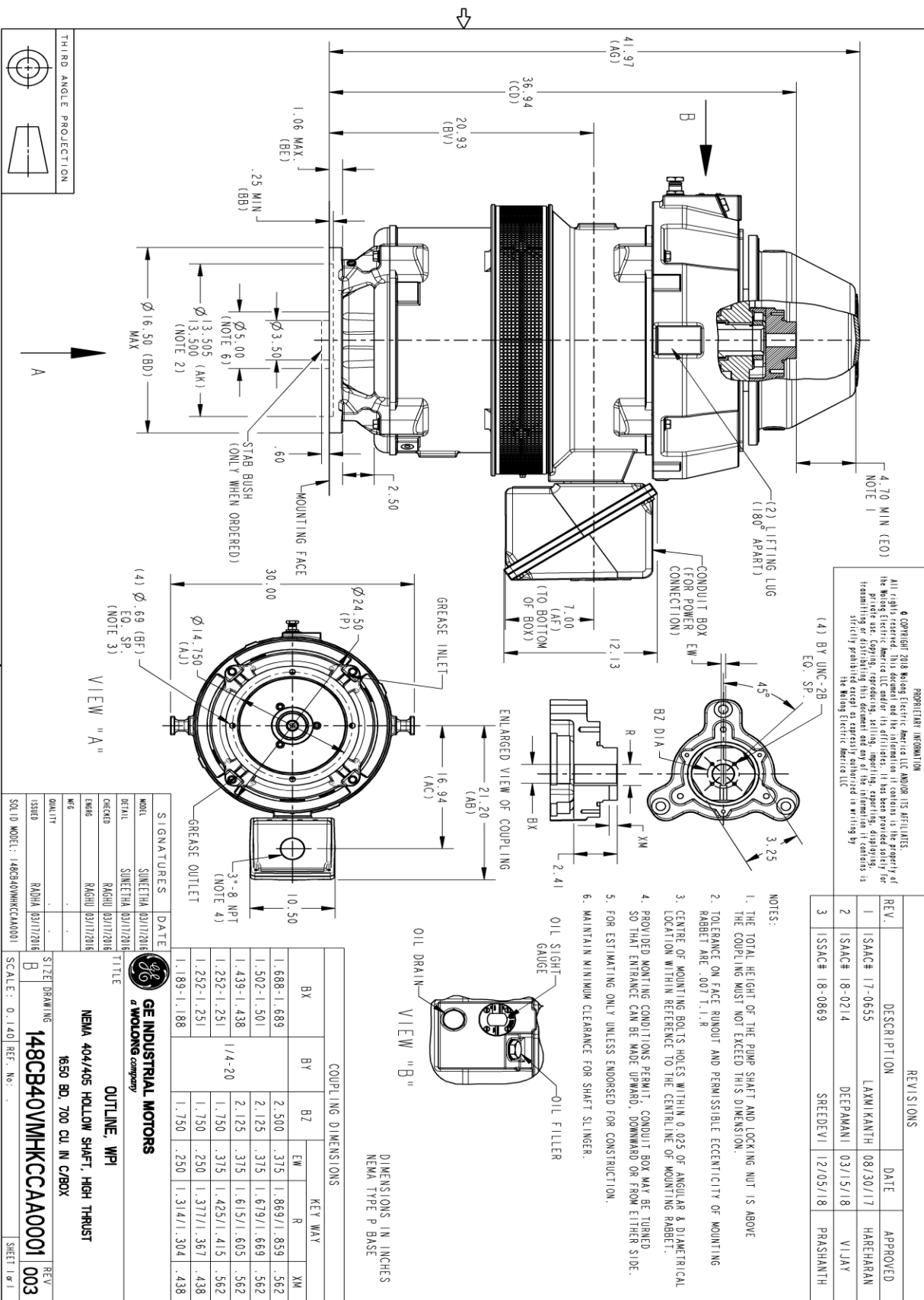
This motor is capable of two cold or one hot start with a maximum connected load inertia of 5677 Lb-Ft Sq (239 Kg-meter Sq) at 100% voltage, where the load torque varies with the square of the speed. Acceleration time with maximum inertia and the above load type is 52 seconds. Safe stall time at 100% voltage is 103 seconds cold, 70 seconds hot. Rotor inertia is 29.46 Lb-Ft Sq (1.24 Kg-meter Sq).

Open Circuit A-C:	0.63	Short Circuit D-C:	0.021
Short Circuit A-C:	0.041	X/R Ratio:	8.073
Stator Slots:	72	Rotor Slots:	58

Speed Torque Current Curve (First Connection, First Speed)



Marks:

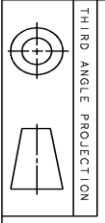


PROPRIETARY INFORMATION

All rights reserved. This document and the information it contains is the property of the Moting Electric America LLC and/or its affiliates. It has been provided solely for the use of the customer and is not to be distributed, copied, or otherwise used without the written consent of Moting Electric America LLC. Any use of this information is strictly prohibited except as expressly authorized in writing by Moting Electric America LLC.

REV: 003

REV.	DESCRIPTION	DATE	APPROVED
1	ISAC# 17-0655	08/30/17	HAREHARAN
2	ISAC# 18-0214	03/15/18	VIJAY
3	ISSAC# 18-0869	12/05/18	PRAASHANTH



SIGNATURES	DATE	<p>GE INDUSTRIAL MOTORS a WOLONG company</p>
MODEL	03/17/2016	
DETAIL	03/17/2016	
ORDER	03/17/2016	
ENGR	03/17/2016	<p>OUTLINE, WPI</p> <p>NEMA 404/405 HOLLOW SHAFT, HIGH THRUST</p> <p>650 BD, 700 CU IN C/BOX</p>
QC		
QUALITY		
ISSUED		
SOLID MODEL:	148CB40VMHKCCA0001	SCALE: 0.140
<p>148CB40VMHKCCA0001</p>		REF. No.:
<p>003</p>		SHEET 1 of 1

Marks:

Connection Diagram
GEM2034E-FIG19



End shield Assembly		
Part Description	DE Side Part#	ODE Side Part#
End Shield	115E7306AC1	115E7310LK-G01
Bearing	235A2513AL01	235A2532AA01
Slinger/Inproseal	235A2300HW1	

Fan & Fan Cover Assembly	
Part Description	Part#
Fan	
Fan Cover	161C1054AA1

Conduit & Accessories Box Assembly	
Part Description	Part#
Conduit Box	118D4408AD2

Mechanical Accessories	
Part Description	Part#
Brake	
Tachometer	

