



**GE INDUSTRIAL MOTORS**  
a **WOLONG** company

# Product Technical Information

July 15, 2020

Data shown is for the current revision model #. Ensure your nameplate model # matches.

<b>Model Number:</b>	<b>5KS365DAJ6020D</b>
<b>Catalog Number:</b>	<b>V4520</b>
<b>Instruction Manual:</b>	GEI-M1045
<b>Connection Diagram:</b>	GEM2034E-FIG19
<b>Outline Drawing:</b>	148CB36VMHKBCLA0001

## Accessory Connection Diagrams

<b>Bearing Thermocouple:</b>	None	<b>Heater:</b>	3027JE-1C
<b>RTD:</b>	None	<b>Thermistor:</b>	None
<b>Thermostat:</b>	3027JE-2A	<b>Winding Thermocouple:</b>	None
<b>Bearing RTD:</b>	None		

## Table of Contents

Specification	01
Performance Characteristics	02
Outline Drawing	03
Connection Drawing(s)	04
Spare parts	05

Marks:

<b>MODEL NUMBER:</b>	<b>5KS365DAJ6020D</b>	<b>Estimated Weight:</b>	830 Lbs
<b>Outline Drawing:</b>	148CB36VMHKBCLA0001	<b>Time Rating:</b>	CONT
<b>Connection Diagram:</b>	GEM2034E-FIG19	<b>Enclosure:</b>	WPI
<b>Instruction Book:</b>	GEI-M1045	<b>Encl Construction:</b>	OPEN
<b>Design Code:</b>	36BD1237AA	<b>Ambient Max(°C):</b>	40
<b>Type:</b>	KS	<b>Alt Ambient Max(°C):</b>	--
<b>Frame:</b>	L365TP16	<b>Insulation Class:</b>	H
<b>Phases:</b>	3	<b>NEMA Design:</b>	B
<b>Poles:</b>	4	<b>Nominal Efficiency:</b>	95.0 %
<b>Output Power:</b>	75HP 55.5KW	<b>Guaranteed Efficiency:</b>	94.1 %
<b>RPM:</b>	1785	<b>3/4 Load Efficiency:</b>	94.7 %
<b>Voltage:</b>	460	<b>KVA Code:</b>	G
<b>Hertz:</b>	60	<b>Max KVAR:</b>	27.8
<b>Amps - FL:</b>	91.7	<b>Power Factor:</b>	81.0
<b>Service Factor:</b>	1.15	<b>Bearing - DE:</b>	6212C3
<b>Alt Service Factor:</b>	--	<b>Bearing - ODE:</b>	235A2523AD01

Enclosure is Weather Protected One

---

Stamped Nameplate Notes:

NEMA ENCLOSURE WP-I, CSA ENCL DP  
HTR LDS HE1-HE2 115V 100W  
ROT CCW FACING ODE LEAD/PH SEQ 1-2-3/1-2-3  
THERMOSTAT LEADS TB1-TB2 TRIP  
INVERTER DUTY PER NEMA MG1 PART 31  
ALTERNATE RATING FOR PWM CONTROL:1.0SF 40C AMBIENT  
VAR TORQUE RANGE 5-60 HZ  
UPPER BRG LUBE OIL: 3.7 QTS  
0 DEG C TO 40 DEG C : ISO 32(MINERAL OR SYNTHETIC)  
-15 DEG C TO 0 DEG C : ISO 32 SYNTHETIC  
SUITABLE FOR 60 HP, 380V, 50 HZ WITH  
88.3 AMPS AND 1485 RPM AT 1.00 SF;



**Additional Information:**

4P, VERT HOLLOW SHAFT HIGH THRUST (1D)  
C/BOX 346 CU IN - 3.00" NPT  
OIL RESISTANT SLEEVING ON LEADS  
(3)N.C, CL F, TRIP TSTAT LDS TO MAIN CONDUIT BOX  
115V HTR LDS TO MAIN CONDUIT BOX  
GROUND PAD  
SHAFT GROUNDING RING MOUNTED ON LOWER END BRG CAP  
BEARING LIFE 8760 HRS AT 6244 LB THRUST  
PART WINDING START  
CG:15.23 IN FROM P-BASE FACE, STAT DEF:0.0033 IN  
RCF:3300 CPM AT C/BOX SIDE, 3270 CPM AT  
90 DEG FROM C/ BOX SIDE  
NON-REVERSE BALL CARRIER,  
BOLTED COUPLING, BX=1.251. EW=.25  
SPECIAL BALANCE



**Performance Characteristics**

1st Winding 1st Connection

**Design: 36BD1237AA**

**Marks:**

LOAD %	125.0	115.0	100.0	75.0	50.0	25.0	0.0
% EFF	94.18	94.39	94.83	94.74	94.15	91.01	0.00
% PF	83.3	82.68	81.16	76.27	65.72	43.3	3.71
AMPS	111.84	103.44	90.98	72.85	56.73	44.53	38.77

**TORQ(FL)#FT** 220.86  
**AMPS(LR)** 513.21

**TORQ(LR)%FL** 162.11  
**PF AT START** 0.31

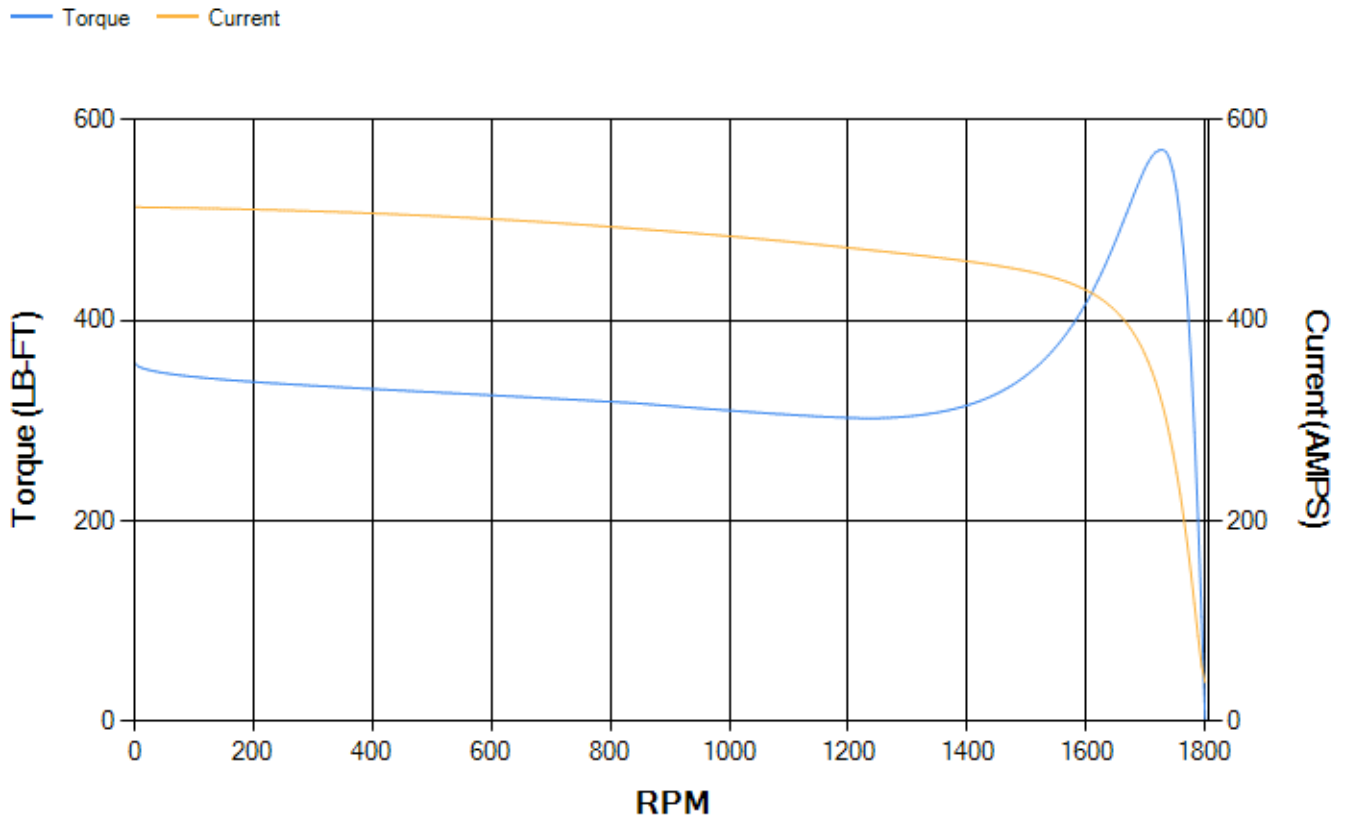
**TORQ(BD)%FL** 257.68

This motor is capable of two cold or one hot start with a maximum connected load inertia of 1597 Lb-Ft Sq (67.23 Kg-meter Sq)at 100% voltage, where the load torque varies with the square of the speed. Acceleration time with maximum inertia and the above load type is 35 seconds. Safe stall time at 100% voltage is 64 seconds cold, 42 seconds hot. Rotor inertia is 12.61 Lb-Ft Sq (0.53 Kg-meter Sq).

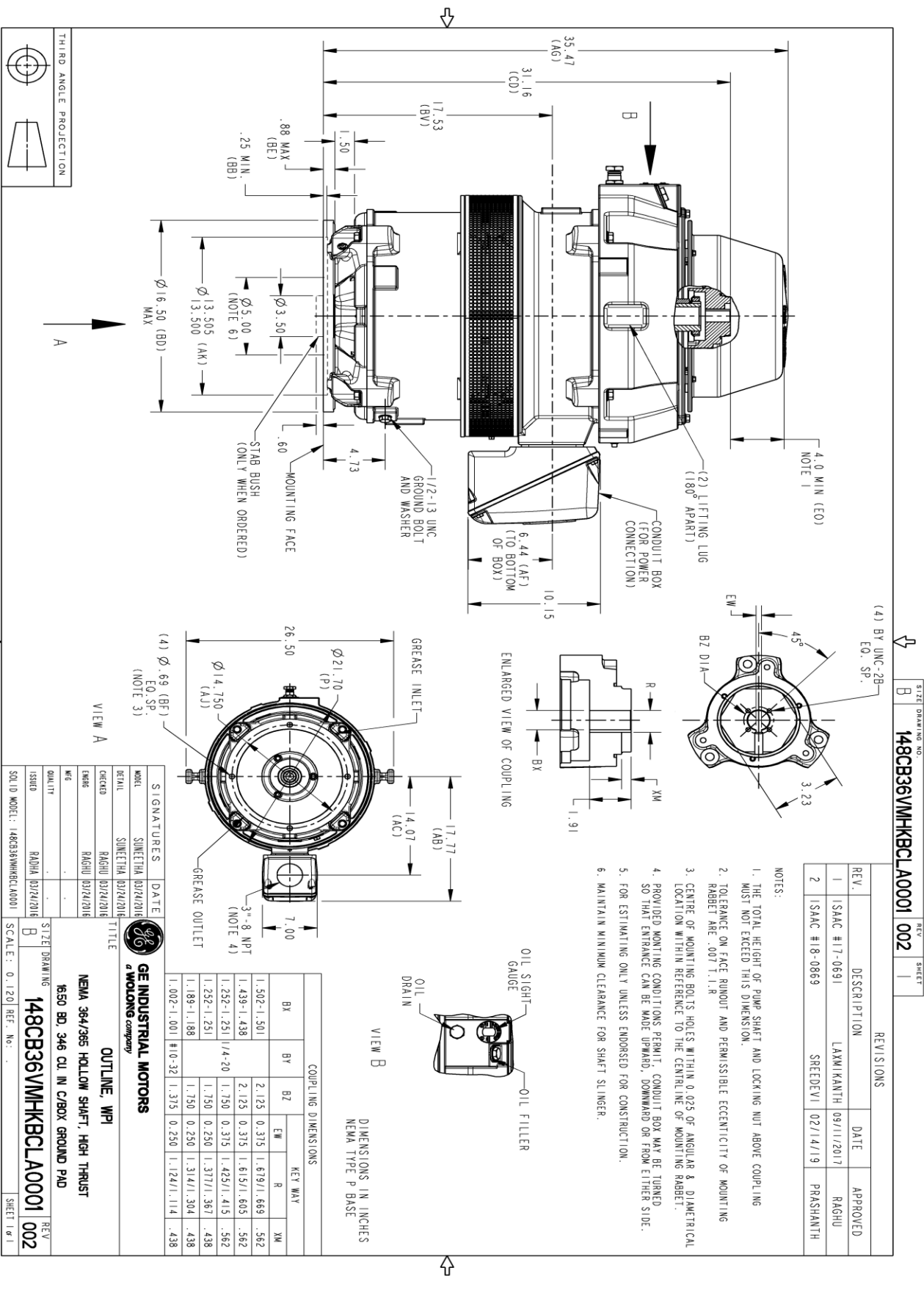
**Open Circuit A-C:** 0.614  
**Short Circuit A-C:** 0.038  
**Stator Slots:** 60

**Short Circuit D-C:** 0.025  
**X/R Ratio:** 9.522  
**Rotor Slots:** 50

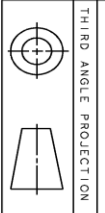
**Speed Torque Current Curve (First Connection, First Speed)**



Marks:



SIZE DRAWING NO. **B** REV. **002** SHEET **1**



SOLID MODEL: 148CB36VMHKBCLA0001

SCALE: 0.120 REF. No.:

SHEET 1 OF 1

Marks:

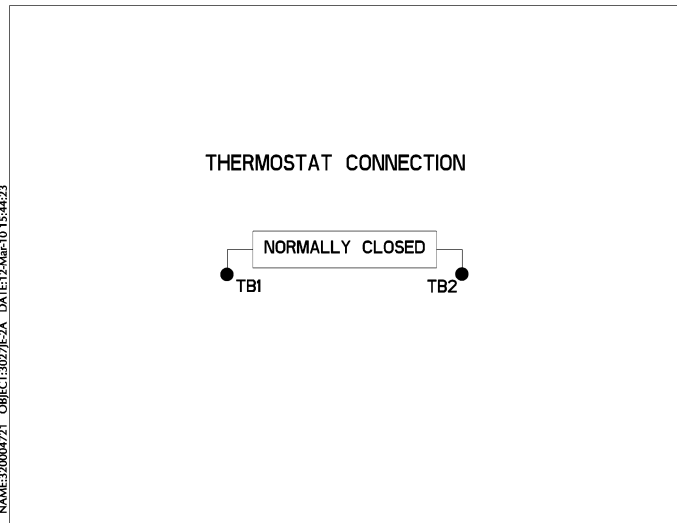
**Connection Diagram**  
**GEM2034E-FIG19**



**Heater Connection**  
**3027JE-1C**



**Thermostat Connection**  
**3027JE-2A**



NAME:320004721 - OBJECT:3027JE-2A DATE:12-Mar-10 15:44:23



End shield Assembly		
Part Description	DE Side Part#	ODE Side Part#
End Shield	115E7255AA1	115E7259LJ1
Bearing	235A2509BE01	235A2523AD01
Slinger/Inproseal	235A2300FM1	

Fan & Fan Cover Assembly	
Part Description	Part#
Fan	
Fan Cover	161C1053AA1

Conduit & Accessories Box Assembly	
Part Description	Part#
Conduit Box	149C4429AA2

Mechanical Accessories	
Part Description	Part#
Brake	
Tachometer	

