



GE INDUSTRIAL MOTORS
a **WOLONG** company

Product Technical Information

July 15, 2020

Data shown is for the current revision model #. Ensure your nameplate model # matches.

Model Number:	5KS444DAJ6021D
Catalog Number:	V4526
Instruction Manual:	GEI-M1045
Connection Diagram:	GEM2034E-FIG24
Outline Drawing:	148CB44VMHKCCLA0001

Accessory Connection Diagrams

Bearing Thermocouple:	None	Heater:	3027JE-1C
RTD:	None	Thermistor:	None
Thermostat:	3027JE-2A	Winding Thermocouple:	None
Bearing RTD:	None		

Table of Contents

Specification	01
Performance Characteristics	02
Outline Drawing	03
Connection Drawing(s)	04
Spare parts	05

Marks:

MODEL NUMBER:	5KS444DAJ6021D	Estimated Weight:	2300 Lbs
Outline Drawing:	148CB44VMHKCLA0001	Time Rating:	CONT
Connection Diagram:	GEM2034E-FIG24	Enclosure:	WPI
Instruction Book:	GEI-M1045	Encl Construction:	OPEN
Design Code:	44BD1228A	Ambient Max(°C):	40
Type:	KS	Alt Ambient Max(°C):	--
Frame:	L444TP16	Insulation Class:	H
Phases:	3	NEMA Design:	B
Poles:	4	Nominal Efficiency:	95.8 %
Output Power:	150HP 111KW	Guaranteed Efficiency:	95.0 %
RPM:	1785	3/4 Load Efficiency:	95.2 %
Voltage:	460	KVA Code:	G
Hertz:	60	Max KVAR:	49.9
Amps - FL:	176.0	Power Factor:	84.0
Service Factor:	1.15	Bearing - DE:	6217C3
Alt Service Factor:	--	Bearing - ODE:	235A2536AB01

Enclosure is Weather Protected One

Stamped Nameplate Notes:

NEMA ENCLOSURE WP-I, CSA ENCL DP
HTR LDS HE1-HE2 115V 145W
ROT CCW FACING ODE LEAD/PH SEQ 1-2-3/1-2-3
THERMOSTAT LEADS TB1-TB2 TRIP
INVERTER DUTY PER NEMA MG1 PART 31
ALTERNATE RATING FOR PWM CONTROL:1.0SF 40C AMBIENT
VAR TORQUE RANGE 5 -60 HZ
UPPER BRG LUBE OIL: 10.2 QTS
0 DEG C TO 40 DEG C : ISO 32(MINERAL OR SYNTHETIC)
-15 DEG C TO 0 DEG C : ISO 32 SYNTHETIC
SUITABLE FOR 125 HP, 380V, 50 HZ WITH
181.0 AMPS AND 1485 RPM AT 1.00 SF



Additional Information:

4P, VERT HOLLOW SHAFT HIGH THRUST (1D)
C/BOX 700 CU IN - 3.00" NPT
SLINGER DE ONLY
OIL RESISTANT SLEEVING ON LEADS
(3) N.C. CL.F TRIP TSTAT LDS TO MAIN CONDUIT BOX
115V HTR LDS TO MAIN CONDUIT BOX
GROUND PAD
INSULATED UPPER BEARING CARRIER
SHAFT GROUNDING RING MOUNTED ON DE BRG CAP
BEARING LIFE 8760 HRS AT 14462LB THRUST
PART WINDING START
CG:22.60 IN FROM P-BASE FACE, STAT DEF:= 0.005 IN
RCF: 2750 CPM (+/-10%)
NON-REVERSE BALL CARRIER,
BOLTED COUPLING, BX = 1.688, KEY=0.375



Performance Characteristics

1st Winding 1st Connection

Design: 44BD1228A

Marks:

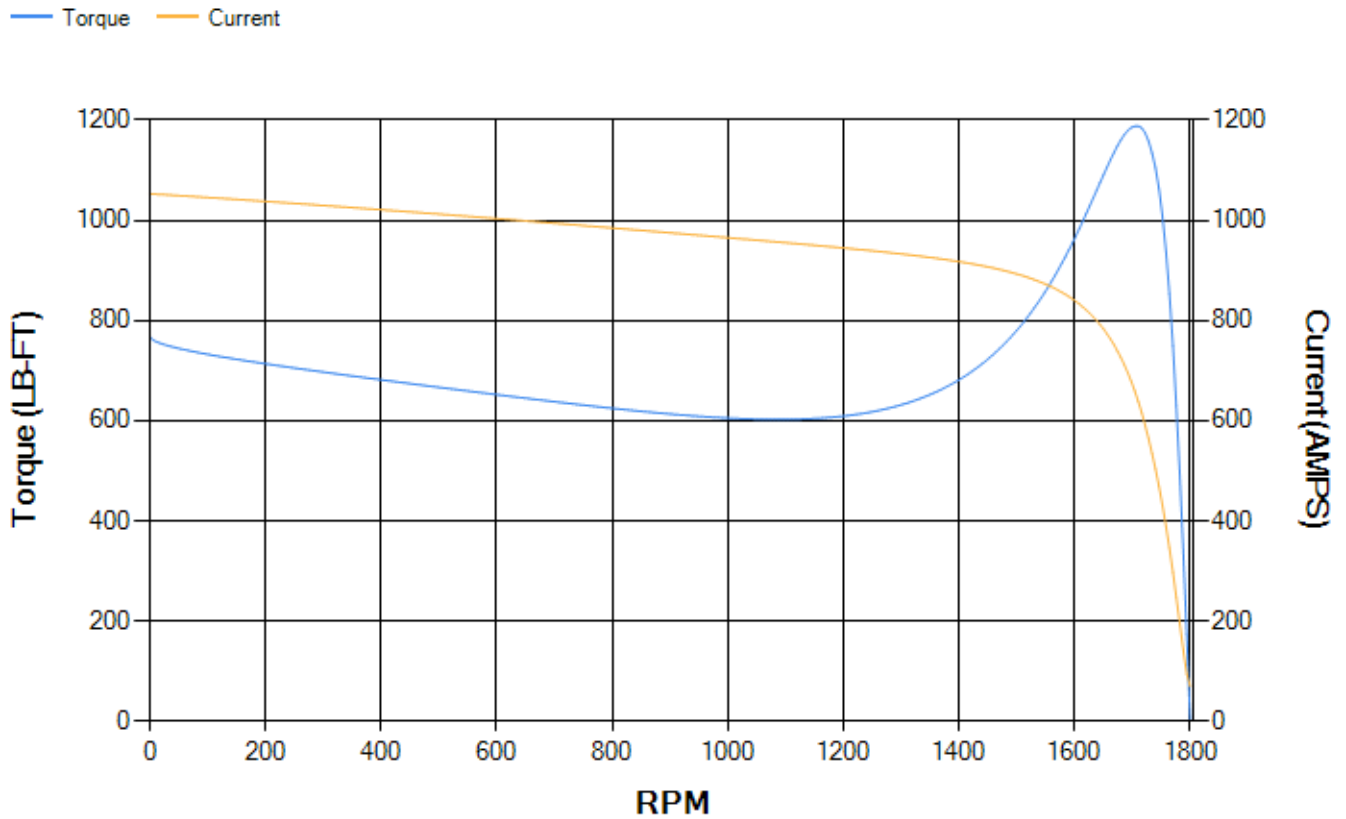
LOAD %	125.0	115.0	100.0	75.0	50.0	25.0	0.0
% EFF	94.71	94.9	95.3	95.2	94.64	91.75	0.00
% PF	85.58	85.05	83.75	79.39	69.54	47.05	3.96
AMPS	216.5	200.03	175.9	139.32	106.65	81.31	69.67

TORQ(FL)#FT	441.48	TORQ(LR)%FL	174.05	TORQ(BD)%FL	268.74
AMPS(LR)	1053.13	PF AT START	0.32		

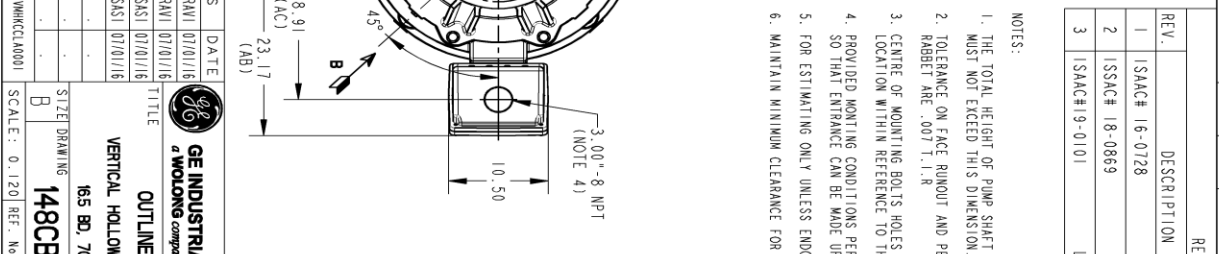
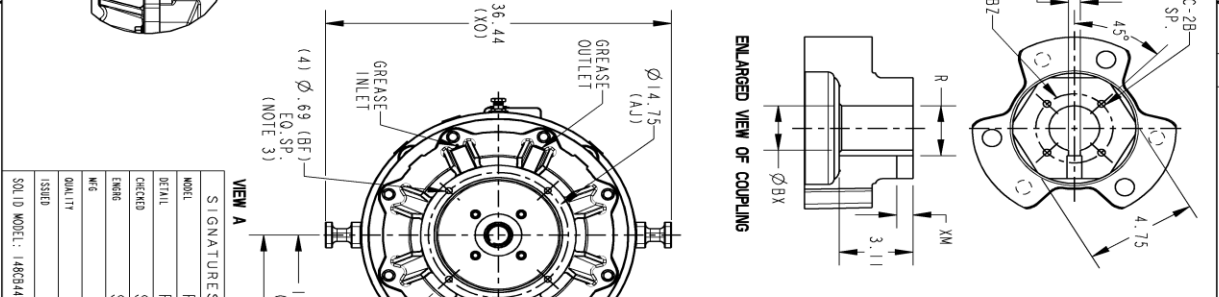
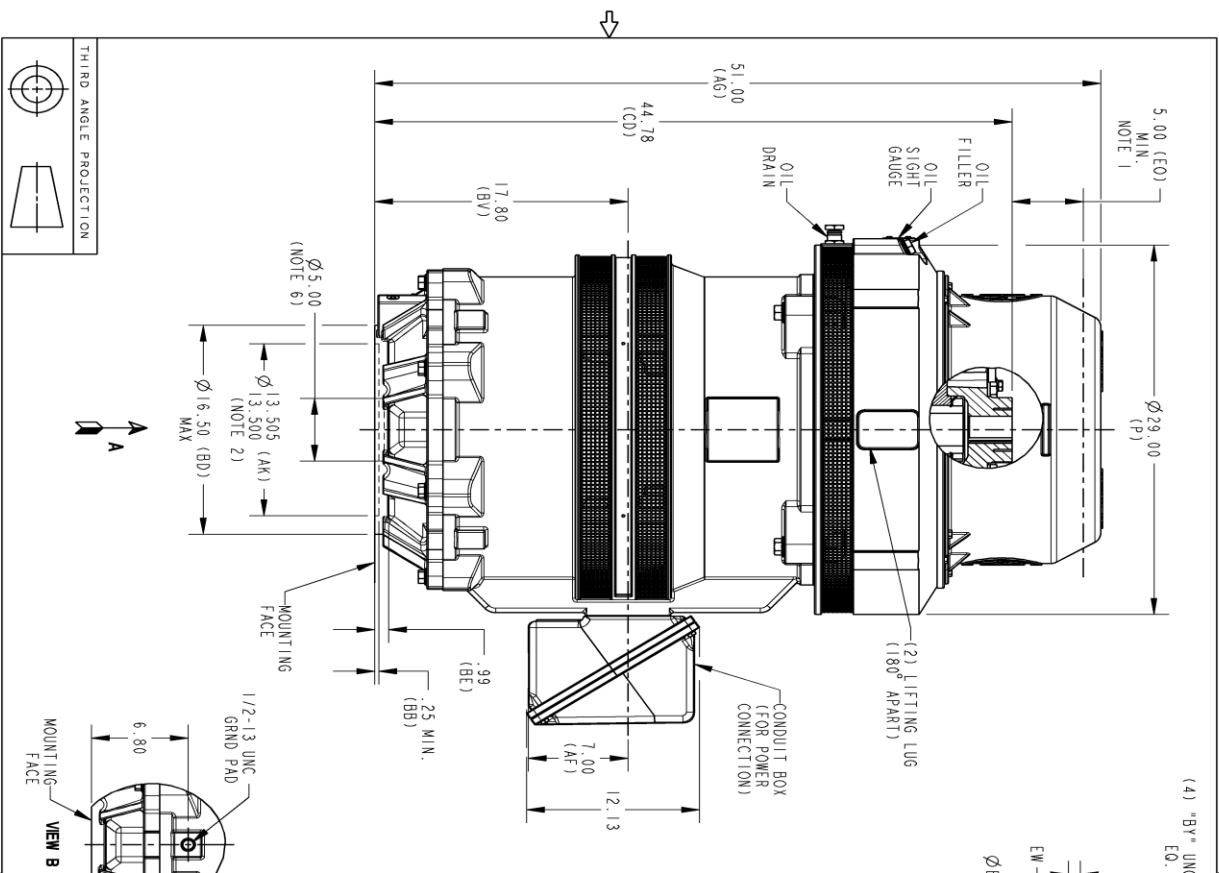
This motor is capable of two cold or one hot start with a maximum connected load inertia of 2405 Lb-Ft Sq (101.25 Kg-meter Sq)at 100% voltage, where the load torque varies with the square of the speed. Acceleration time with maximum inertia and the above load type is 25 seconds. Safe stall time at 100% voltage is 47 seconds cold, 30 seconds hot. Rotor inertia is 45.75 Lb-Ft Sq (1.93 Kg-meter Sq).

Open Circuit A-C:	0.707	Short Circuit D-C:	0.027
Short Circuit A-C:	0.043	X/R Ratio:	10.262
Stator Slots:	72	Rotor Slots:	58

Speed Torque Current Curve (First Connection, First Speed)



Marks:



NOTES:

1. THE TOTAL HEIGHT OF PUMP SHAFT AND LOCKING NUT ABOVE COUPLING MUST NOT EXCEED THIS DIMENSION.
2. TOLERANCE ON FACE RUNOUT AND PERMISSIBLE ECCENTRICITY OF MOUNTING RABBET ARE .007 T. I. R.
3. CENTRE OF MOUNTING BOLTS HOLES WITHIN 0.025 OF ANGULAR & DIAMETRICAL LOCATION WITHIN REFERENCE TO THE CENTRALLINE OF MOUNTING RABBET.
4. PROVIDED MOUNTING CONDITIONS PERMIT, CONDUIT BOX MAY BE TURNED SO THAT ENTRANCE CAN BE MADE UPWARD, DOWNWARD OR FROM EITHER SIDE.
5. FOR ESTIMATING ONLY UNLESS ENDORSED FOR CONSTRUCTION.
6. MAINTAIN MINIMUM CLEARANCE FOR SHAFT SLINGER.

REVISIONS

REV.	DESCRIPTION	DATE	APPROVED
1	ISAC# 16-0728	07/21/16	SASI
2	ISSAC# 18-0869	12/06/18	PRASHANTH
3	ISAC# 19-0101	02/20/2019	DEEPA MANI

DIMENSIONS IN INCHES
NEMA TYPE P BASE

COUPLING DIMENSIONS		KEY WAY	
BX	BY	BZ	EW
1.501	1/4-20	2.125	.315
1.688	1/4-20	2.500	.375
1.751	1/4-20	2.500	.375
1.813	1/4-20	2.500	.500
1.938	1/4-20	2.500	.500
2.001	3/8-16	3.250	.500
2.063	3/8-16	3.250	.500
2.126	3/8-16	3.250	.500
2.251	3/8-16	3.250	.500
2.316	3/8-16	3.250	.500
2.438	3/8-16	3.250	.625
2.501	3/8-16	3.250	.625

THIRD ANGLE PROJECTION

VIEW B

VIEW A

GE INDUSTRIAL MOTORS
a WOLONG company

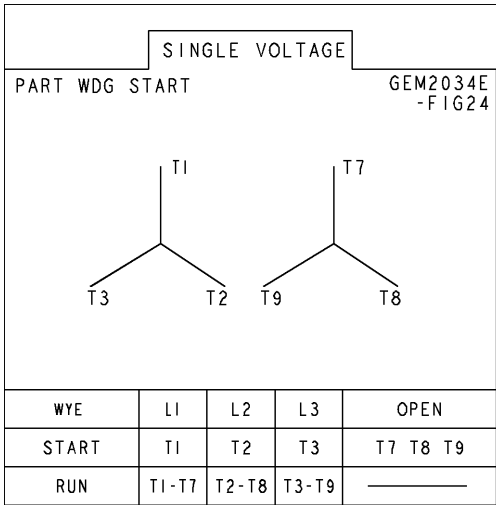
OUTLINE, NEMA WPI 444/445
VERTICAL HOLLOW SHAFT, HIGH THRUST GR5 LOWER
165 BD, 700 CL IN C/BOX GRND PAD

SCALE: 0.120 REF. NO. 148CB44VMHKCCLA0001 003

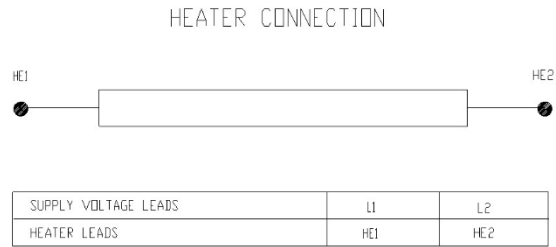
SHEET 1 OF 1

Marks:

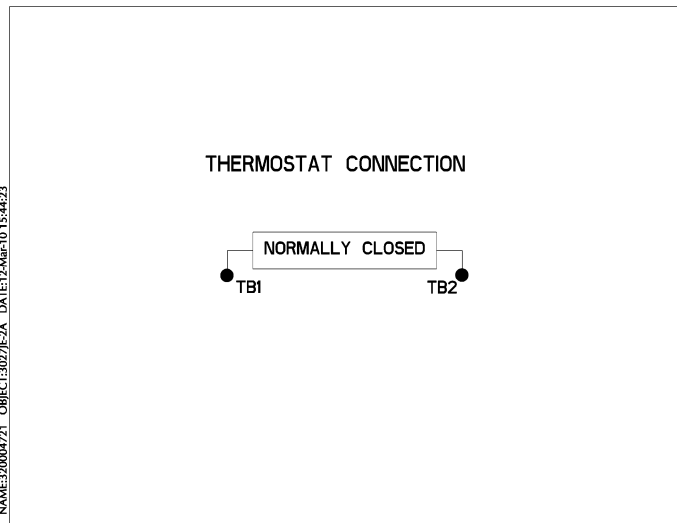
Connection Diagram
GEM2034E-FIG24



Heater Connection
3027JE-1C



Thermostat Connection
3027JE-2A



NAME:30004721 OBJECT:3027JE-2A DATE:12-Mar-10 15:44:23



End shield Assembly		
Part Description	DE Side Part#	ODE Side Part#
End Shield	115E7660AA1	115E7670LM1
Bearing	235A2522AJ01	235A2536AB01
Slinger/Inproseal	149C4399G06	

Fan & Fan Cover Assembly	
Part Description	Part#
Fan	
Fan Cover	161C1050AA1

Conduit & Accessories Box Assembly	
Part Description	Part#
Conduit Box	118D4408AD2

Mechanical Accessories	
Part Description	Part#
Brake	
Tachometer	

