



GE INDUSTRIAL MOTORS
a **WOLONG** company

Product Technical Information

July 15, 2020

Data shown is for the current revision model #. Ensure your nameplate model # matches.

Model Number:	5KS444DAJ6022C
Catalog Number:	V4528
Instruction Manual:	GEI-M1045
Connection Diagram:	GEM2034E-FIG24
Outline Drawing:	148CB44VMJKCLA0001

Accessory Connection Diagrams

Bearing Thermocouple:	None	Heater:	3027JE-1C
RTD:	None	Thermistor:	None
Thermostat:	3027JE-2A	Winding Thermocouple:	None
Bearing RTD:	None		

Table of Contents

Specification	01
Performance Characteristics	02
Outline Drawing	03
Connection Drawing(s)	04
Spare parts	05

Marks:

MODEL NUMBER:	5KS444DAJ6022C	Estimated Weight:	2460 Lbs
Outline Drawing:	148CB44VMJKCCLA0001	Time Rating:	CONT
Connection Diagram:	GEM2034E-FIG24	Enclosure:	WPI
Instruction Book:	GEI-M1045	Encl Construction:	OPEN
Design Code:	44BD1220A	Ambient Max(°C):	40
Type:	KS	Alt Ambient Max(°C):	--
Frame:	L444TP20	Insulation Class:	H
Phases:	3	NEMA Design:	B
Poles:	4	Nominal Efficiency:	95.8 %
Output Power:	200HP 148KW	Guaranteed Efficiency:	95.0 %
RPM:	1785	3/4 Load Efficiency:	95.4 %
Voltage:	460	KVA Code:	G
Hertz:	60	Max KVAR:	58.0
Amps - FL:	228.0	Power Factor:	86.0
Service Factor:	1.15	Bearing - DE:	6217C3
Alt Service Factor:	--	Bearing - ODE:	235A2536AB01

Enclosure is Weather Protected One

Stamped Nameplate Notes:

NEMA ENCLOSURE WP-I, CSA ENCL DP
 HTR LDS HE1-HE2 115V 145W
 ROT CCW FACING ODE LEAD/PH SEQ 1-2-3/1-2-3
 THERMOSTAT LEADS TB1-TB2 TRIP
 INVERTER DUTY PER NEMA MG1 PART 31
 ALTERNATE RATING FOR PWM CONTROL:1.0SF 40C AMBIENT
 VAR TORQUE RANGE 5 -60 HZ
 UPPER BRG LUBE OIL: 10.2 QTS
 0 DEG C TO 40 DEG C : ISO 32(MINERAL OR SYNTHETIC)
 -15 DEG C TO 0 DEG C : ISO 32 SYNTHETIC
 SUITABLE FOR 150 HP, 380 V, 50 HZ WITH
 210.0 AMPS AND 1485 RPM AT 1.0 SF



Additional Information:

4P, VERT HOLLOW SHAFT HIGH THRUST (2D)
C/BOX 700 CU IN - 3.00" NPT
OIL RESISTANT SLEEVING ON LEADS
(3) N.C. CL.F TRIP TSTAT LDS TO MAIN CONDUIT BOX
115V HTR LDS TO MAIN CONDUIT BOX
GROUND PAD
INSULATED UPPER BEARING CARRIER
SHAFT GROUNDING RING MOUNTED ON DE BRG CAP
BEARING LIFE 8760 HRS AT 22551 LB THRUST
PART WINDING START
CG:22.60 IN FROM P-BASE FACE,STAT DEF:= 0.004 IN
RCF: 2971 CPM
NON-REVERSE BALL CARRIER,
BOLTED COUPLING, BX = 1.688, KEY = 0.375



Performance Characteristics

1st Winding 1st Connection

Design: 44BD1220A

Marks:

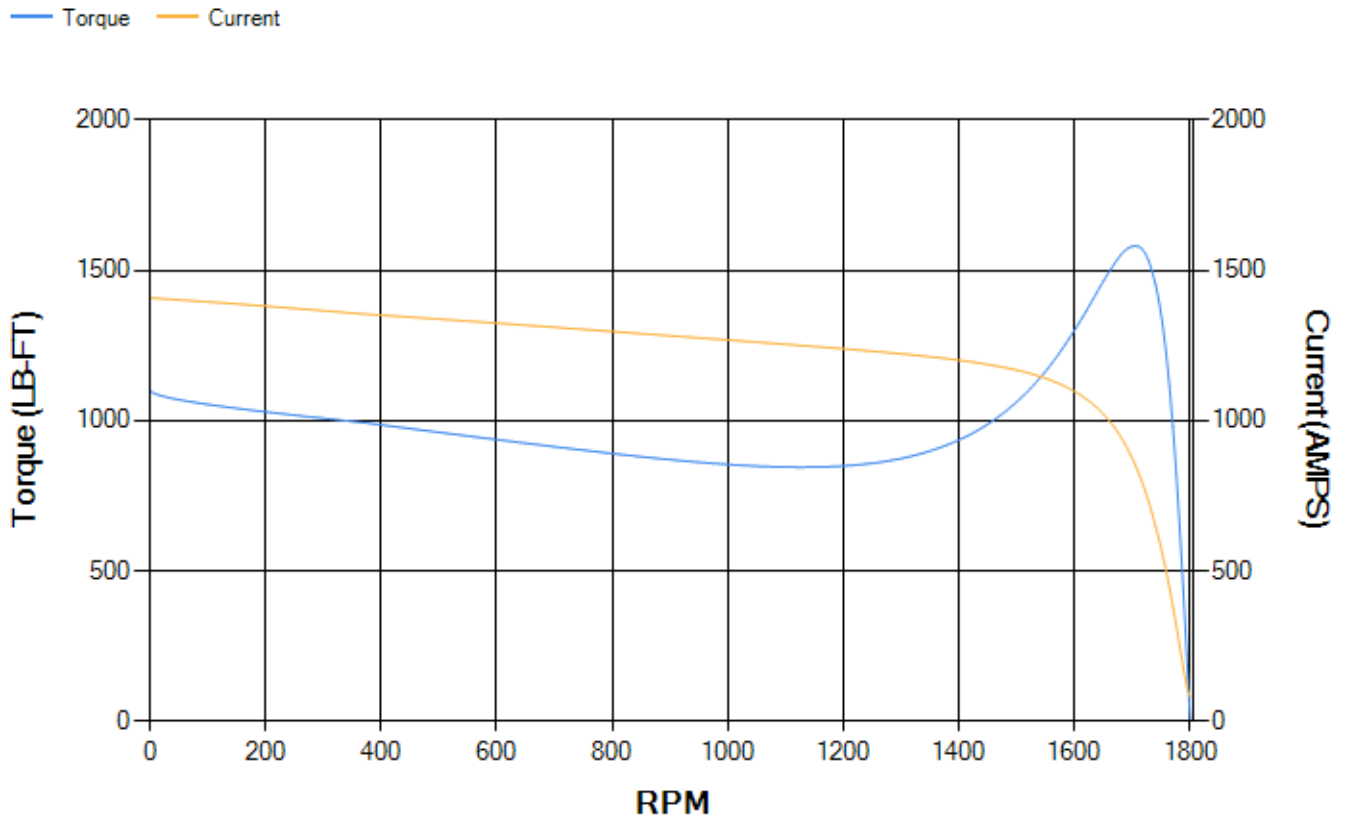
LOAD %	125.0	115.0	100.0	75.0	50.0	25.0	0.0
% EFF	94.95	95.13	95.53	95.42	94.9	92.15	0.00
% PF	87.07	86.72	85.76	82.22	73.59	51.77	4.31
AMPS	283.03	260.93	228.5	178.94	134.01	98.1	80.96

TORQ(FL)#FT	588.93	TORQ(LR)%FL	187.25	TORQ(BD)%FL	268.11
AMPS(LR)	1408.51	PF AT START	0.33		

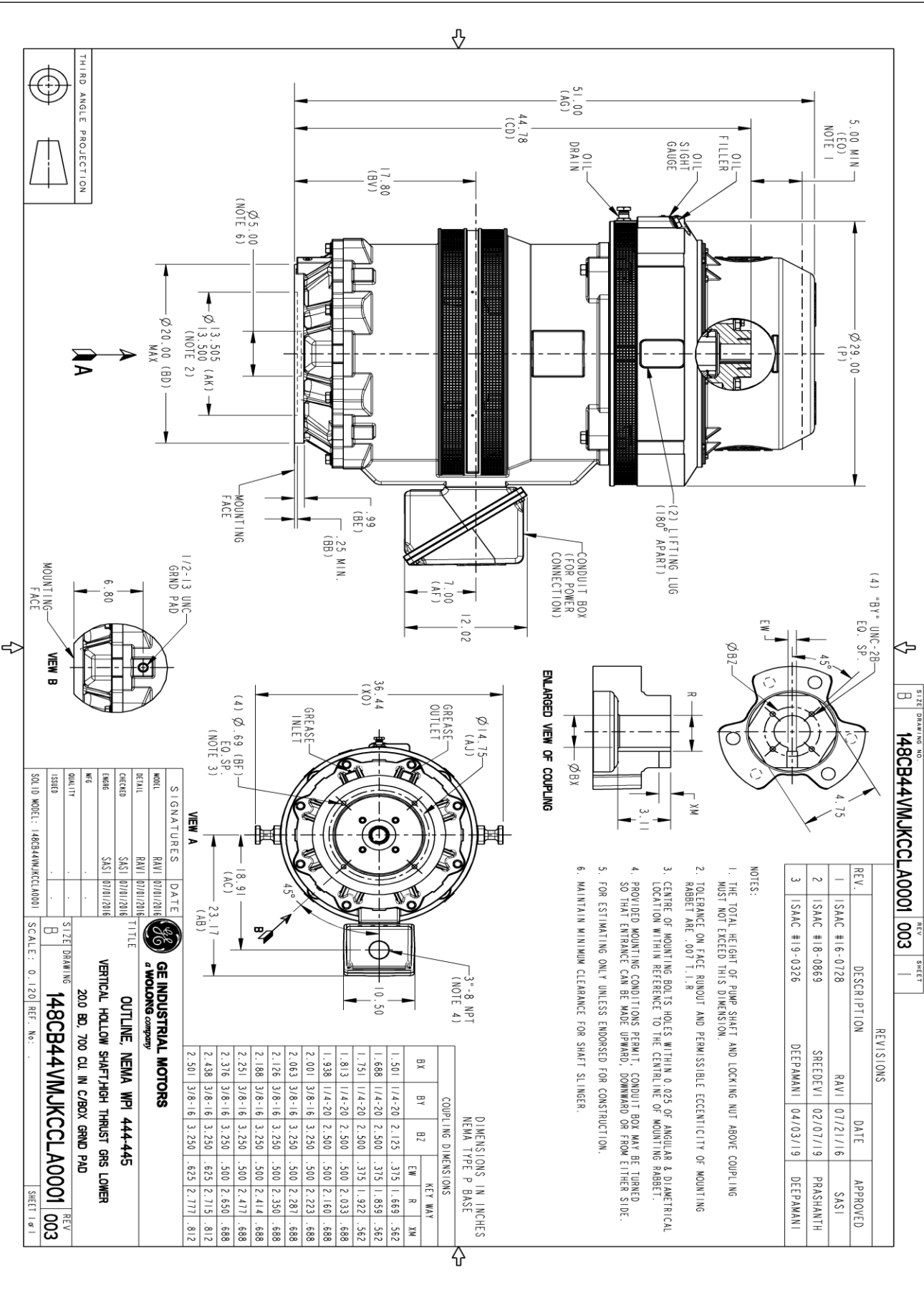
This motor is capable of two cold or one hot start with a maximum connected load inertia of 2850 Lb-Ft Sq (119.98 Kg-meter Sq)at 100% voltage, where the load torque varies with the square of the speed. Acceleration time with maximum inertia and the above load type is 21 seconds. Safe stall time at 100% voltage is 41 seconds cold, 25 seconds hot. Rotor inertia is 61 Lb-Ft Sq (2.57 Kg-meter Sq).

Open Circuit A-C:	0.762	Short Circuit D-C:	0.03
Short Circuit A-C:	0.04	X/R Ratio:	11.418
Stator Slots:	72	Rotor Slots:	58

Speed Torque Current Curve (First Connection, First Speed)

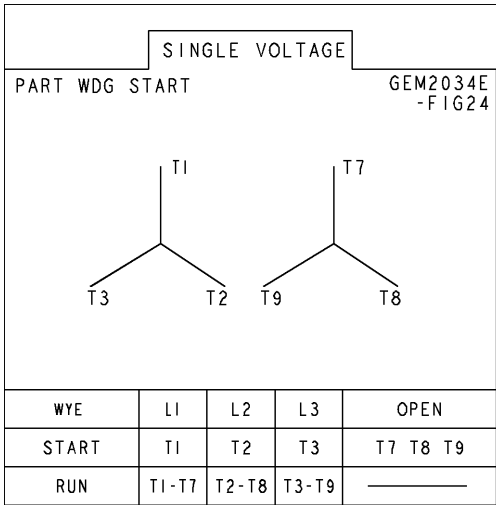


Marks:

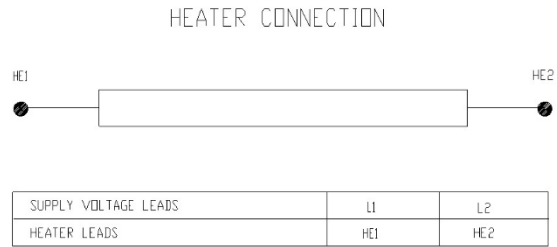


Marks:

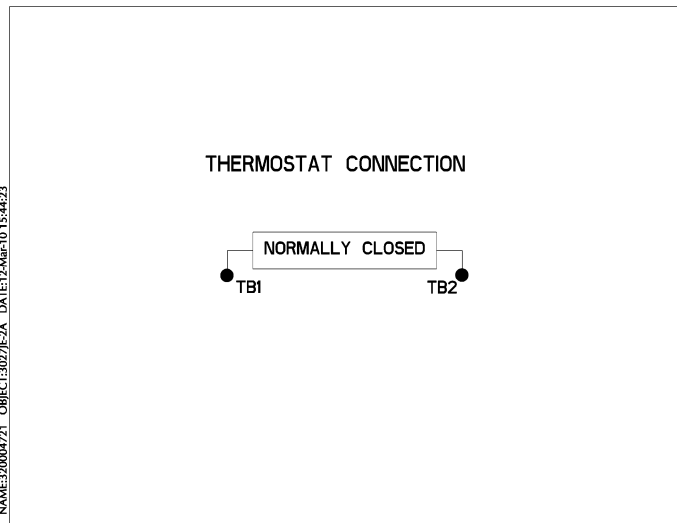
Connection Diagram
GEM2034E-FIG24



Heater Connection
3027JE-1C



Thermostat Connection
3027JE-2A



NAME:30004721 OBJECT:3027JE-2A DATE:12-Mar-10 15:44:23



End shield Assembly		
Part Description	DE Side Part#	ODE Side Part#
End Shield	115E7661AA1	115E7670LM1
Bearing	235A2522AJ01	235A2536AB01
Slinger/Inproseal	149C4399G06	

Fan & Fan Cover Assembly	
Part Description	Part#
Fan	
Fan Cover	161C1050AA1

Conduit & Accessories Box Assembly	
Part Description	Part#
Conduit Box	118D4408AD2

Mechanical Accessories	
Part Description	Part#
Brake	
Tachometer	

