



**GE INDUSTRIAL MOTORS**  
a **WOLONG** company

# Product Technical Information

February 15, 2021

Data shown is for the current revision model #. Ensure your nameplate model # matches.

<b>Model Number:</b>	<b>5KS445DAJ6020C</b>
<b>Catalog Number:</b>	<b>V4529</b>
<b>Instruction Manual:</b>	GEI-M1045
<b>Connection Diagram:</b>	GEM2034E-FIG19
<b>Outline Drawing:</b>	148CB44VMJKLGLA0001

## Accessory Connection Diagrams

<b>Bearing Thermocouple:</b>	None	<b>Heater:</b>	3027JE-1C
<b>RTD:</b>	None	<b>Thermistor:</b>	None
<b>Thermostat:</b>	3027JE-2A	<b>Winding Thermocouple:</b>	None
<b>Bearing RTD:</b>	None		

## Table of Contents

Specification	01
Performance Characteristics	02
Outline Drawing	03
Connection Drawing(s)	04
Spare parts	05

Marks:

<b>MODEL NUMBER:</b>	<b>5KS445DAJ6020C</b>	<b>Estimated Weight:</b>	2460 Lbs
<b>Outline Drawing:</b>	148CB44VMJKLGLA0001	<b>Time Rating:</b>	CONT
<b>Connection Diagram:</b>	GEM2034E-FIG19	<b>Enclosure:</b>	WPI
<b>Instruction Book:</b>	GEI-M1045	<b>Encl Construction:</b>	OPEN
<b>Design Code:</b>	44BD1168AB	<b>Ambient Max(°C):</b>	40
<b>Type:</b>	KS	<b>Alt Ambient Max(°C):</b>	--
<b>Frame:</b>	L445TP20	<b>Insulation Class:</b>	H
<b>Phases:</b>	3	<b>NEMA Design:</b>	B
<b>Poles:</b>	4	<b>Nominal Efficiency:</b>	95.8 %
<b>Output Power:</b>	250HP 185KW	<b>Guaranteed Efficiency:</b>	95.0 %
<b>RPM:</b>	1780	<b>3/4 Load Efficiency:</b>	--
<b>Voltage:</b>	460	<b>KVA Code:</b>	G
<b>Hertz:</b>	60	<b>Max KVAR:</b>	83.0
<b>Amps - FL:</b>	292.0	<b>Power Factor:</b>	84.0
<b>Service Factor:</b>	1.15	<b>Bearing - DE:</b>	6217C3
<b>Alt Service Factor:</b>	--	<b>Bearing - ODE:</b>	235A2536AB01

Enclosure is Weather Protected One

---

Stamped Nameplate Notes:

NEMA ENCLOSURE WP-I, CSA ENCL DP  
HTR LDS HE1-HE2 115V 145W  
ROT CCW FACING ODE LEAD/PH SEQ 1-2-3/1-2-3  
THERMOSTAT LEADS TB1-TB2 TRIP  
INVERTER DUTY PER NEMA MG1 PART 31  
ALTERNATE RATING FOR PWM CONTROL:1.0SF 40C AMBIENT  
VAR TORQUE RANGE 5 -60 HZ  
UPPER BRG LUBE OIL: 10.2 QTS  
0 DEG C TO 40 DEG C : ISO 32(MINERAL OR SYNTHETIC)  
-15 DEG C TO 0 DEG C : ISO 32 SYNTHETIC  
SUITABLE FOR 200 HP, 380V, 50 HZ WITH  
284.0 AMPS AND 1480 RPM AT 1.00 SF



**Additional Information:**

4P, VERT HOLLOW SHAFT HIGH THRUST (2D)  
C/BOX 1260 CU IN - 2(4.00" NPT)  
OIL RESISTANT SLEEVING ON LEADS  
N.C. TRIP TSTAT LDS TO MAIN CONDUIT BOX  
115V HTR LDS TO MAIN CONDUIT BOX  
GROUND PAD  
INSULATED LOWER HALF COUPLING AT UPPER END  
SHAFT GROUNDING RING MOUNTED ON LOWER END BRG CAP  
BEARING LIFE 8760 HRS AT 22551 LB THRUST  
PART WINDING START  
CG:22.60 IN FROM P-BASE FACE, STAT DEF:= 0.004 IN  
RCF: 2971 CPM  
NON-REVERSE BALL CARRIER,  
BOLTED COUPLING, BX = 1.688, KEY = 0.375



**Performance Characteristics**

1st Winding 1st Connection

**Design: 44BD1168AB**

**Marks:**

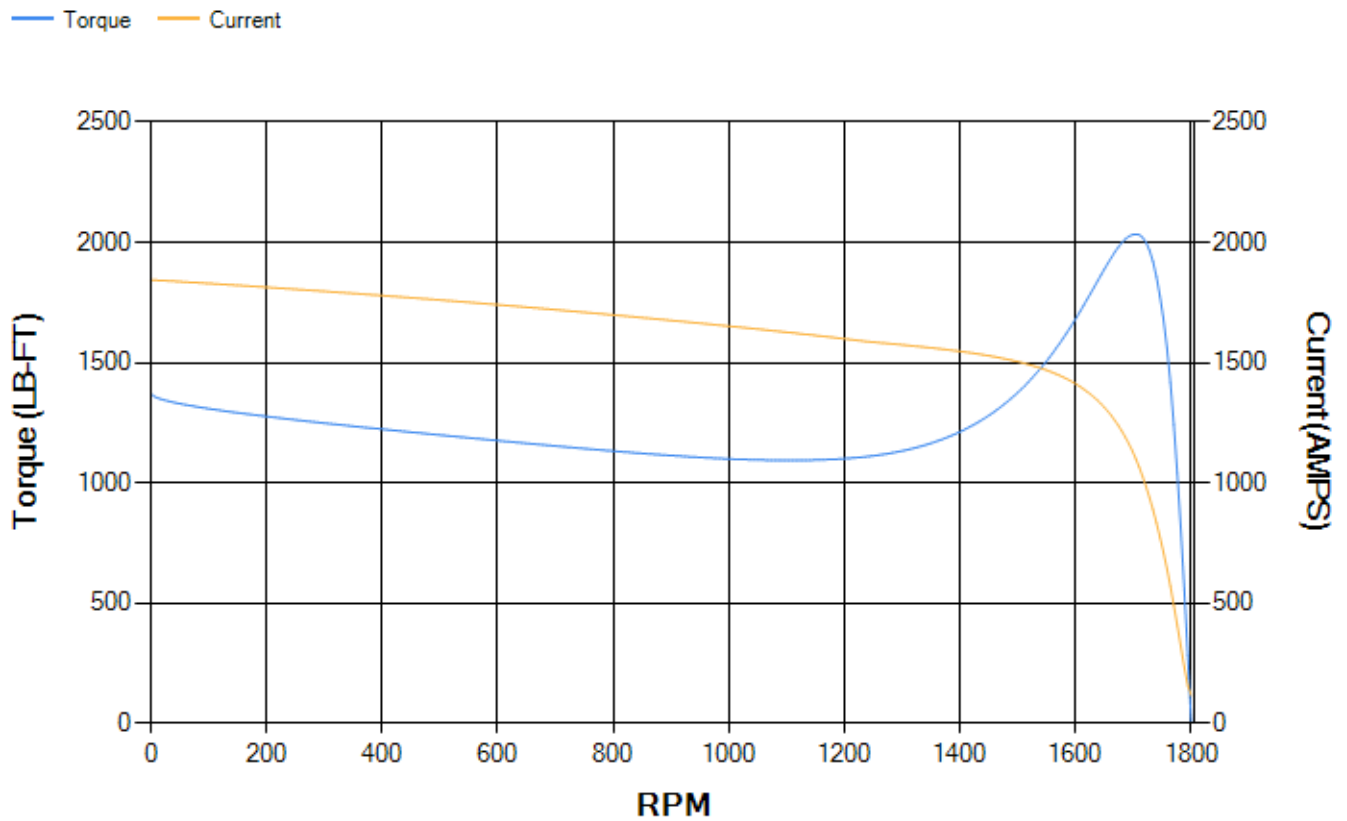
LOAD %	125.0	115.0	100.0	75.0	50.0	25.0	0.0
% EFF	94.83	95.02	95.43	95.34	94.83	92.07	0.00
% PF	85.57	85.05	83.74	79.39	69.54	46.99	3.76
AMPS	360.41	332.98	292.8	231.84	177.41	135.21	115.92

<b>TORQ(FL)#FT</b>	736.65	<b>TORQ(LR)%FL</b>	186.37	<b>TORQ(BD)%FL</b>	275.63
<b>AMPS(LR)</b>	1844.1	<b>PF AT START</b>	0.32		

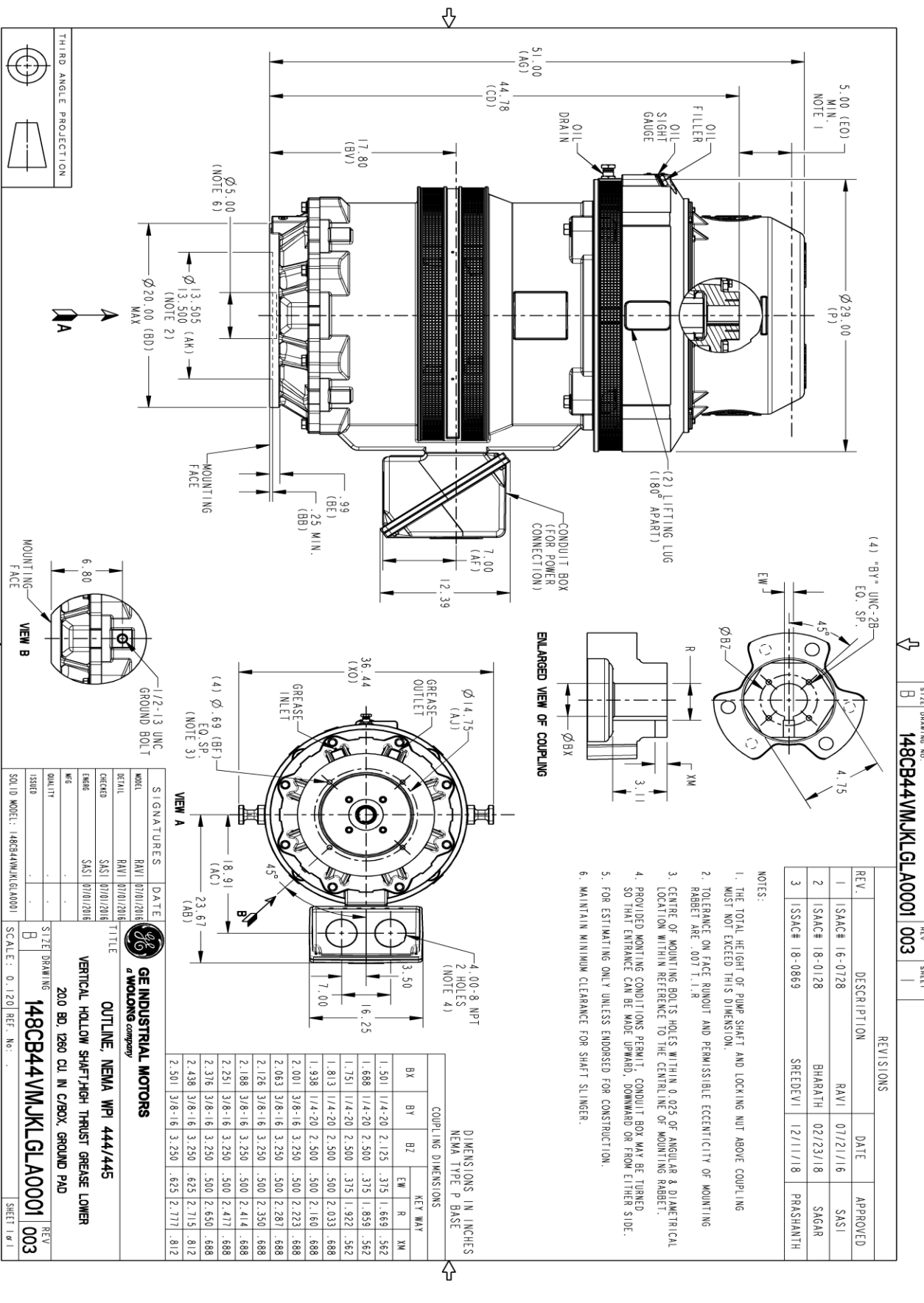
This motor is capable of two cold or one hot start with a maximum connected load inertia of 2498 Lb-Ft Sq (105.17 Kg-meter Sq)at 100% voltage, where the load torque varies with the square of the speed. Acceleration time with maximum inertia and the above load type is 15 seconds. Safe stall time at 100% voltage is 35 seconds cold, 18 seconds hot. Rotor inertia is 61 Lb-Ft Sq (2.57 Kg-meter Sq).

<b>Open Circuit A-C:</b>	0.626	<b>Short Circuit D-C:</b>	0.029
<b>Short Circuit A-C:</b>	0.036	<b>X/R Ratio:</b>	10.914
<b>Stator Slots:</b>	72	<b>Rotor Slots:</b>	58

**Speed Torque Current Curve (First Connection, First Speed)**



Marks:



SIZE DRAWING NO. B 148CB44VMJKLGLA0001 003

REVISIONS

Marks:

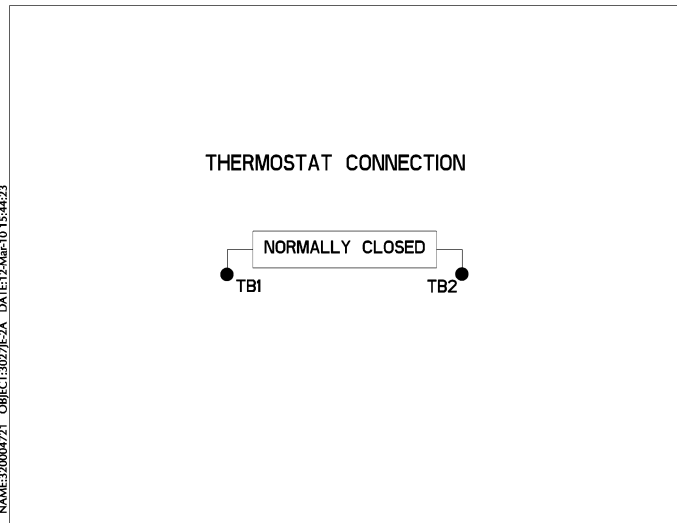
**Connection Diagram**  
**GEM2034E-FIG19**



**Heater Connection**  
**3027JE-1C**



**Thermostat Connection**  
**3027JE-2A**



End shield Assembly		
Part Description	DE Side Part#	ODE Side Part#
End Shield	115E7661AA1	115E7670LM1
Bearing	235A2522AJ01	235A2536AB01
Slinger/Inproseal	149C4399G06	

Fan & Fan Cover Assembly	
Part Description	Part#
Fan	
Fan Cover	161C1050AA1

Conduit & Accessories Box Assembly	
Part Description	Part#
Conduit Box	179B9058G03

Mechanical Accessories	
Part Description	Part#
Brake	
Tachometer	

