



GE INDUSTRIAL MOTORS
a **WOLONG** company

Product Technical Information

July 15, 2020

Data shown is for the current revision model #. Ensure your nameplate model # matches.

Model Number:	5KS324DAJ6022D1
Catalog Number:	V4550
Instruction Manual:	GEI-M1045
Connection Diagram:	GEM2034E-FIG7
Outline Drawing:	148CB32VMHKBCLA0001

Accessory Connection Diagrams

Bearing Thermocouple:	None	Heater:	3027JE-1C
RTD:	None	Thermistor:	None
Thermostat:	3027JE-2A	Winding Thermocouple:	None
Bearing RTD:	None		

Table of Contents

Specification	01
Performance Characteristics	02
Outline Drawing	03
Connection Drawing(s)	04
Spare parts	05

Marks:

MODEL NUMBER:	5KS324DAJ6022D1	Estimated Weight:	690 Lbs
Outline Drawing:	148CB32VMHKBCLA0001	Time Rating:	CONT
Connection Diagram:	GEM2034E-FIG7	Enclosure:	WPI
Instruction Book:	GEI-M1045	Encl Construction:	OPEN
Design Code:	32BD1310BA	Ambient Max(°C):	40
Type:	KS	Alt Ambient Max(°C):	--
Frame:	L324TP16	Insulation Class:	H
Phases:	3	NEMA Design:	B
Poles:	4	Nominal Efficiency:	94.1 %
Output Power:	40HP 29.6KW	Guaranteed Efficiency:	93.0 %
RPM:	1780	3/4 Load Efficiency:	--
Voltage:	575	KVA Code:	G
Hertz:	60	Max KVAR:	15.9
Amps - FL:	40.2	Power Factor:	79.5
Service Factor:	1.15	Bearing - DE:	6212C3
Alt Service Factor:	--	Bearing - ODE:	235A2523AD01

Enclosure is Weather Protected One

Stamped Nameplate Notes:

NEMA ENCLOSURE WP-I, CSA ENCL DP
HTR LDS HE1-HE2 115V 100W
ROT CCW FACING ODE LEAD/PH SEQ 1-2-3/1-2-3
THERMOSTAT LEADS TB1-TB2 TRIP
INVERTER DUTY PER NEMA MG1 PART 31
ALTERNATE RATING FOR PWM CONTROL:1.0SF 40C AMBIENT
VAR TORQUE RANGE 5 -60 HZ
UPPER BRG LUBE OIL: 2.1 QTS
0 DEG C TO 40 DEG C : ISO 32(MINERAL OR SYNTHETIC)
-15 DEG C TO 0 DEG C : ISO 32 SYNTHETIC



Additional Information:

4P, VERT HOLLOW SHAFT HIGH THRUST (1D)
SPECIAL BALANCE
C/BOX 346 CU IN - 3.00" NPT
OIL RESISTANT SLEEVING ON LEADS
(3)N.C. CLASS-F TRIP TSTAT LDS TO MAIN CONDUIT BOX
115V HTR LDS TO MAIN CONDUIT BOX
GROUND PAD
SHAFT GROUNDING RING MOUNTED ON DE BRG CAP
BEARING LIFE 8760 HRS AT 6324 LB THRUST
CG:13.86 IN FROM P-BASE FACE, STAT DEF:0.0025 IN
RCF:3600 CPM AT C/BOX SIDE, 3870 CPM AT
90 DEG FROM C/ BOX SIDE
NON-REVERSE BALL CARRIER,
BOLTED COUPLING, BX = 1.188 & KEY = 0.25"



Performance Characteristics

1st Winding 1st Connection

Design: 32BD1310BA

Marks:

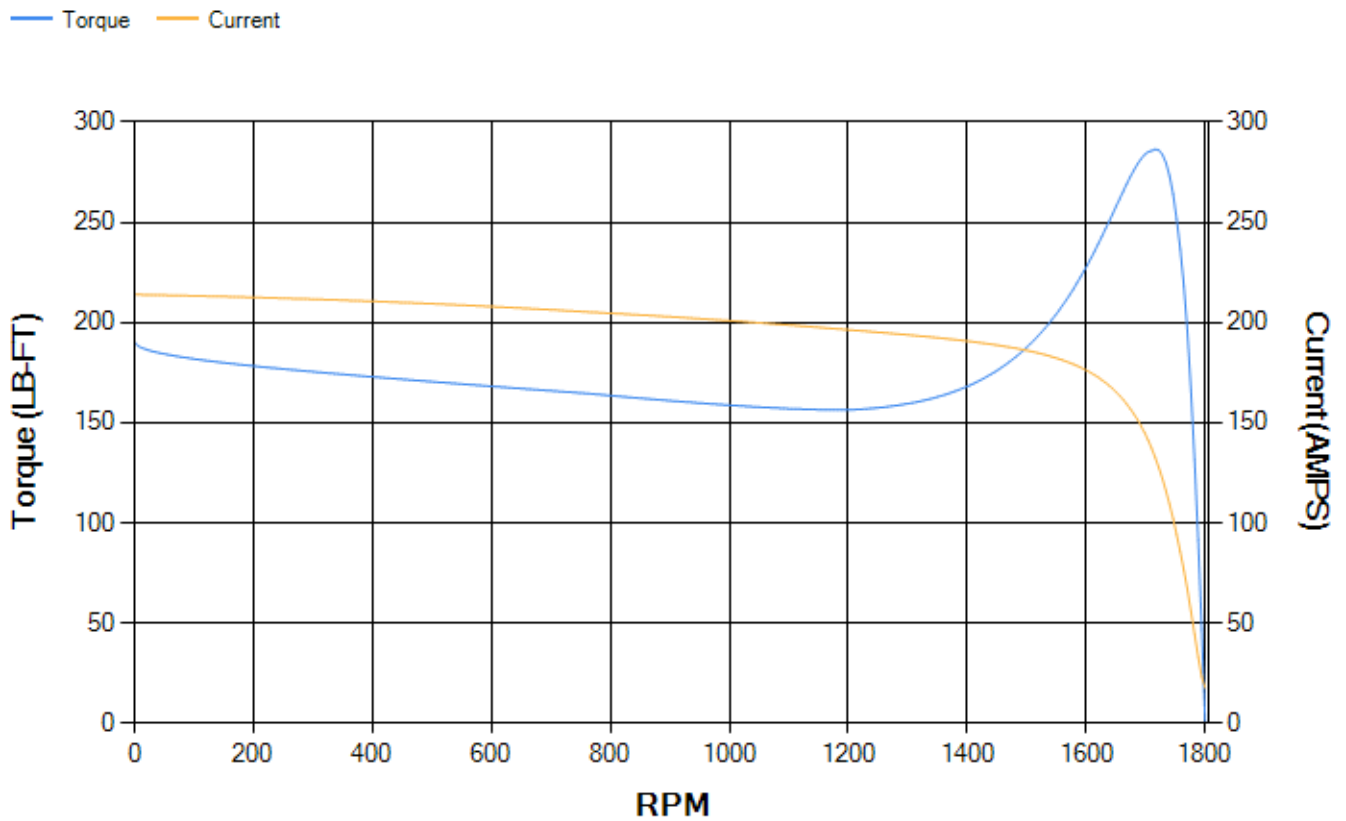
LOAD %	125.0	115.0	100.0	75.0	50.0	25.0	0.0
% EFF	93.18	93.42	93.86	93.72	92.89	88.95	0.00
% PF	81.47	80.84	79.29	74.23	63.53	41.66	4.46
AMPS	49.31	45.61	40.15	32.29	25.38	20.21	17.72

TORQ(FL)#FT	117.98	TORQ(LR)%FL	161.25	TORQ(BD)%FL	241.83
AMPS(LR)	213.93	PF AT START	0.33		

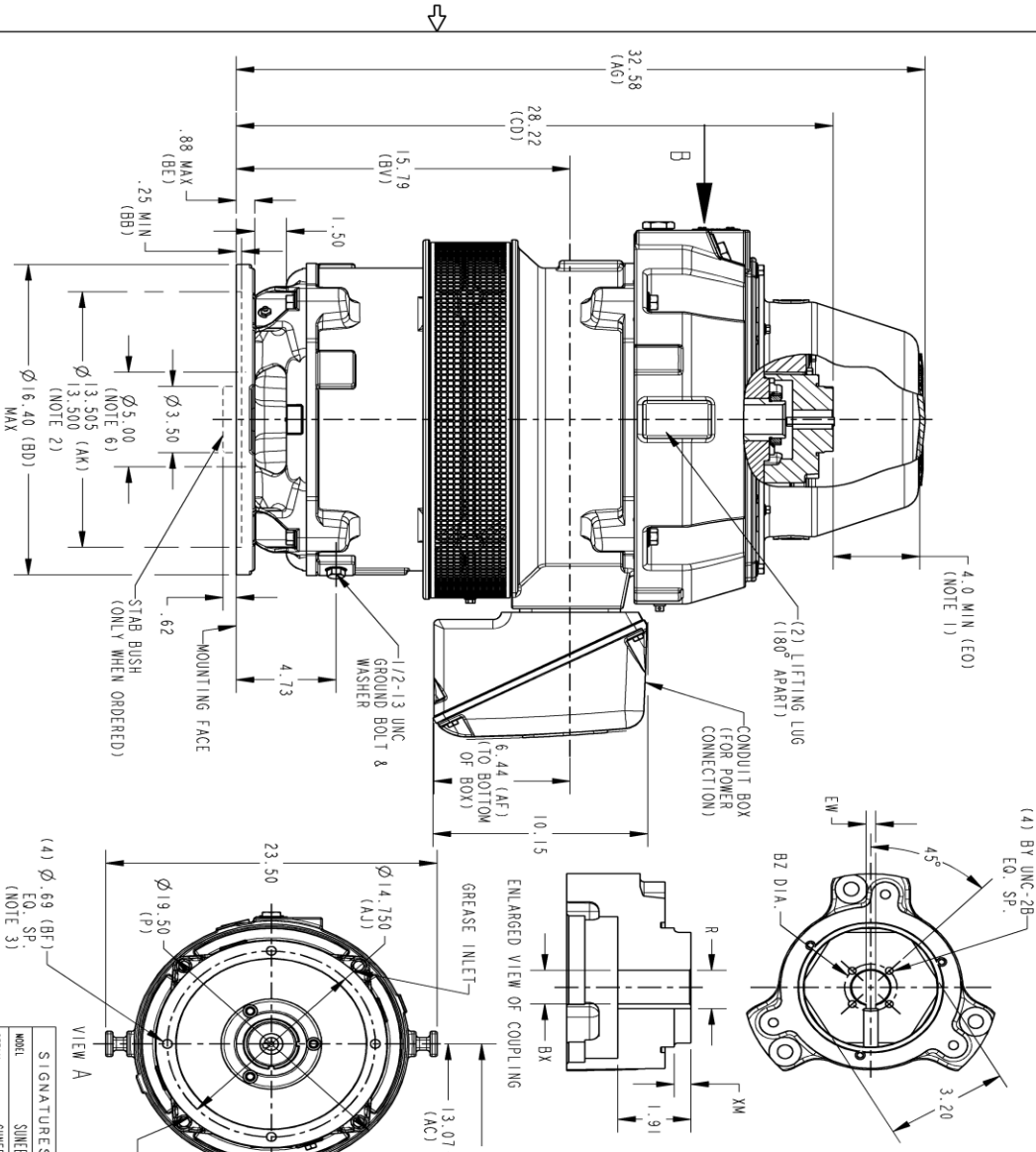
This motor is capable of two cold or one hot start with a maximum connected load inertia of 1199 Lb-Ft Sq (50.48 Kg-meter Sq)at 100% voltage, where the load torque varies with the square of the speed. Acceleration time with maximum inertia and the above load type is 50 seconds. Safe stall time at 100% voltage is 86 seconds cold, 60 seconds hot. Rotor inertia is 6.63 Lb-Ft Sq (0.28 Kg-meter Sq).

Open Circuit A-C:	0.507	Short Circuit D-C:	0.023
Short Circuit A-C:	0.035	X/R Ratio:	8.798
Stator Slots:	48	Rotor Slots:	38

Speed Torque Current Curve (First Connection, First Speed)



Marks:



REV. 1 188CB32VMHKBCLA0001 003

REV.	DESCRIPTION	DATE	APPROVED
1	ISAC# 17-0691	09/01/17	RAGHU
2	ISSAC# 18-0869	12/17/18	PRASHANTH
3	ISAC #18-1092	12/28/18	SACHIN

NOTES:

1. THE TOTAL HEIGHT OF PUMP SHAFT AND LOCKING NUT ABOVE COUPLING MUST NOT EXCEED THIS DIMENSION.
2. TOLERANCE ON FACE ROUNDT AND PERMISSIBLE ECCENTRICITY OF MOUNTING RABBIT ARE .001 T.I.R.
3. CENTRE OF MOUNTING BOLTS HOLES WITHIN 0.025 OF ANGULAR & DIAMETRICAL LOCATION WITHIN REFERENCE TO THE CENTRELINE OF MOUNTING RABBIT.
4. PROVIDED MONTING CONDITIONS PERMIT, CONDUIT BOX MAY BE TIERED SO THAT ENTRANCE CAN BE MADE UPWARD, DOWNWARD OR FROM EITHER SIDE.
5. FOR ESTIMATING ONLY UNLESS ENDORSED FOR CONSTRUCTION.
6. MAINTAIN MINIMUM CLEARANCE FOR SHAFT SLINGER.

VIEW A

VIEW B

DIMENSIONS IN INCHES
NEMA TYPE P BASE

COUPLING DIMENSIONS			KEY WAY		
BX	BY	BZ	EW	R	XM
1.502-1.501	2.125	0.315	1.879/1.669	.562	.562
1.439-1.438	2.125	0.315	1.615/1.605	.562	.562
1.292-1.291	1/4-20	1.75	1.425/1.415	.562	.562
1.292-1.291		1.75	0.250	1.377/1.367	.438
1.189-1.188		1.75	0.250	1.314/1.304	.438
1.002-1.001	#10-32	1.315	0.250	1.124/1.114	.438

GE INDUSTRIAL MOTORS
a WOLONG company

OUTLINE, WPI

NEMA 324/326 HOLLOW SHAFT/HIGH THRUST
#650 BD, 346 CL IN C/BOX GROUND PAD

SIGNATURES DATE

MODEL SINETHA 03/14/2016

DETAIL SINETHA 03/14/2016

DESIGN RAGHU 03/14/2016

ENGR RAGHU 03/14/2016

WEG

QUALITY

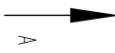
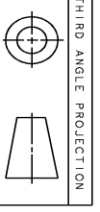
ISSUED RADHA 03/14/2016

SOLID MODEL: 188CB32VMHKBCLA0001

SCALE: 0.180 REF. No.

188CB32VMHKBCLA0001 003

SHEET 1 OF 1



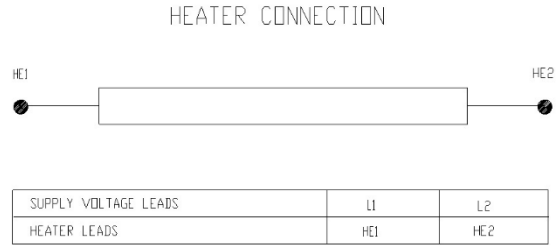
SIZE DRAWING NO. 188CB32VMHKBCLA0001 003

Marks:

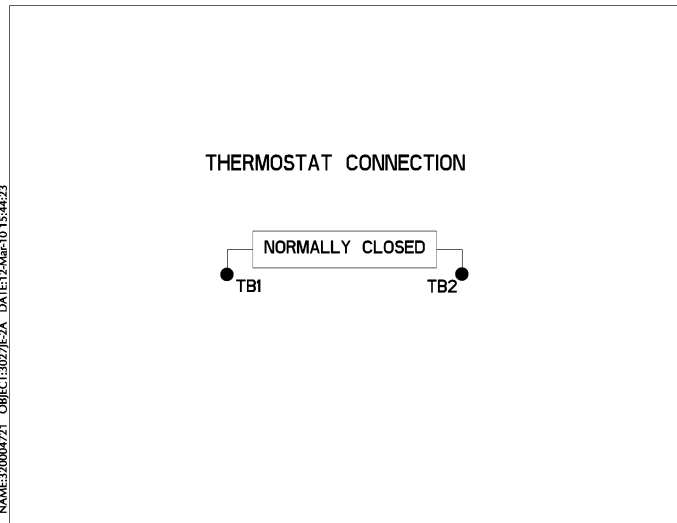
Connection Diagram
GEM2034E-FIG7



Heater Connection
3027JE-1C



Thermostat Connection
3027JE-2A



NAME:320004721 OBJECT:3027JE-2A DATE:12-Mar-10 15:44:23



End shield Assembly		
Part Description	DE Side Part#	ODE Side Part#
End Shield	115E7205AA1	115E7208LJ1
Bearing	235A2509BE01	235A2523AD01
Slinger/Inproseal	235A2300FM1	

Fan & Fan Cover Assembly	
Part Description	Part#
Fan	
Fan Cover	161C1052AA1

Conduit & Accessories Box Assembly	
Part Description	Part#
Conduit Box	149C4429AA2

Mechanical Accessories	
Part Description	Part#
Brake	
Tachometer	

