



**GE INDUSTRIAL MOTORS**  
a **WOLONG** company

# Product Technical Information

July 15, 2020

Data shown is for the current revision model #. Ensure your nameplate model # matches.

<b>Model Number:</b>	<b>5KS326DAJ6021D</b>
<b>Catalog Number:</b>	<b>V4551</b>
<b>Instruction Manual:</b>	GEI-M1045
<b>Connection Diagram:</b>	GEM2034E-FIG7
<b>Outline Drawing:</b>	148CB32VMHKBCLA0001

## Accessory Connection Diagrams

<b>Bearing Thermocouple:</b>	None	<b>Heater:</b>	3027JE-1C
<b>RTD:</b>	None	<b>Thermistor:</b>	None
<b>Thermostat:</b>	3027JE-2A	<b>Winding Thermocouple:</b>	None
<b>Bearing RTD:</b>	None		

## Table of Contents

Specification	01
Performance Characteristics	02
Outline Drawing	03
Connection Drawing(s)	04
Spare parts	05

Marks:

<b>MODEL NUMBER:</b>	<b>5KS326DAJ6021D</b>	<b>Estimated Weight:</b>	740 Lbs
<b>Outline Drawing:</b>	148CB32VMHKBCLA0001	<b>Time Rating:</b>	CONT
<b>Connection Diagram:</b>	GEM2034E-FIG7	<b>Enclosure:</b>	WPI
<b>Instruction Book:</b>	GEI-M1045	<b>Encl Construction:</b>	OPEN
<b>Design Code:</b>	32BD1183BA	<b>Ambient Max(°C):</b>	40
<b>Type:</b>	KS	<b>Alt Ambient Max(°C):</b>	--
<b>Frame:</b>	L326TP16	<b>Insulation Class:</b>	H
<b>Phases:</b>	3	<b>NEMA Design:</b>	B
<b>Poles:</b>	4	<b>Nominal Efficiency:</b>	94.5 %
<b>Output Power:</b>	50HP 37KW	<b>Guaranteed Efficiency:</b>	93.600 %
<b>RPM:</b>	1780	<b>3/4 Load Efficiency:</b>	--
<b>Voltage:</b>	575	<b>KVA Code:</b>	G
<b>Hertz:</b>	60	<b>Max KVAR:</b>	18.1
<b>Amps - FL:</b>	48.9	<b>Power Factor:</b>	81.0
<b>Service Factor:</b>	1.15	<b>Bearing - DE:</b>	6212C3
<b>Alt Service Factor:</b>	--	<b>Bearing - ODE:</b>	235A2523AD01

Enclosure is Weather Protected One

---

Stamped Nameplate Notes:

NEMA ENCLOSURE WP-I, CSA ENCL DP  
HTR LDS HE1-HE2 115V 100W  
ROT CCW FACING ODE LEAD/PH SEQ 1-2-3/1-2-3  
THERMOSTAT LEADS TB1-TB2 TRIP  
INVERTER DUTY PER NEMA MG1 PART 31  
ALTERNATE RATING FOR PWM CONTROL:1.0SF 40C AMBIENT  
VAR TORQUE RANGE 5 -60 HZ  
UPPER BRG LUBE OIL: 2.1 QTS  
0 DEG C TO 40 DEG C : ISO 32(MINERAL OR SYNTHETIC)  
-15 DEG C TO 0 DEG C : ISO 32 SYNTHETIC



**Additional Information:**

4P, VERT HOLLOW SHAFT HIGH THRUST (1D)  
SPECIAL BALANCE  
C/BOX 346 CU IN - 3.00" NPT  
OIL RESISTANT SLEEVING ON LEADS  
(3) N.C. CLASS F TRIP TSTAT LDS TO MAIN CONDUIT BOX  
115V HTR LDS TO MAIN CONDUIT BOX  
GROUND PAD  
SHAFT GROUNDING RING MOUNTED ON DE BRG CAP  
BEARING LIFE 8760 HRS AT 6324 LB THRUST  
CG:13.86 IN FROM P-BASE FACE, STAT DEF:0.0025 IN  
RCF:3600 CPM AT C/BOX SIDE, 3870 CPM AT  
90 DEG FROM C/ BOX SIDE  
NON-REVERSE BALL CARRIER,  
BOLTED COUPLING, BX = 1.188 & KEY=0.25"



**Performance Characteristics**

1st Winding 1st Connection

**Design: 32BD1183BA**

**Marks:**

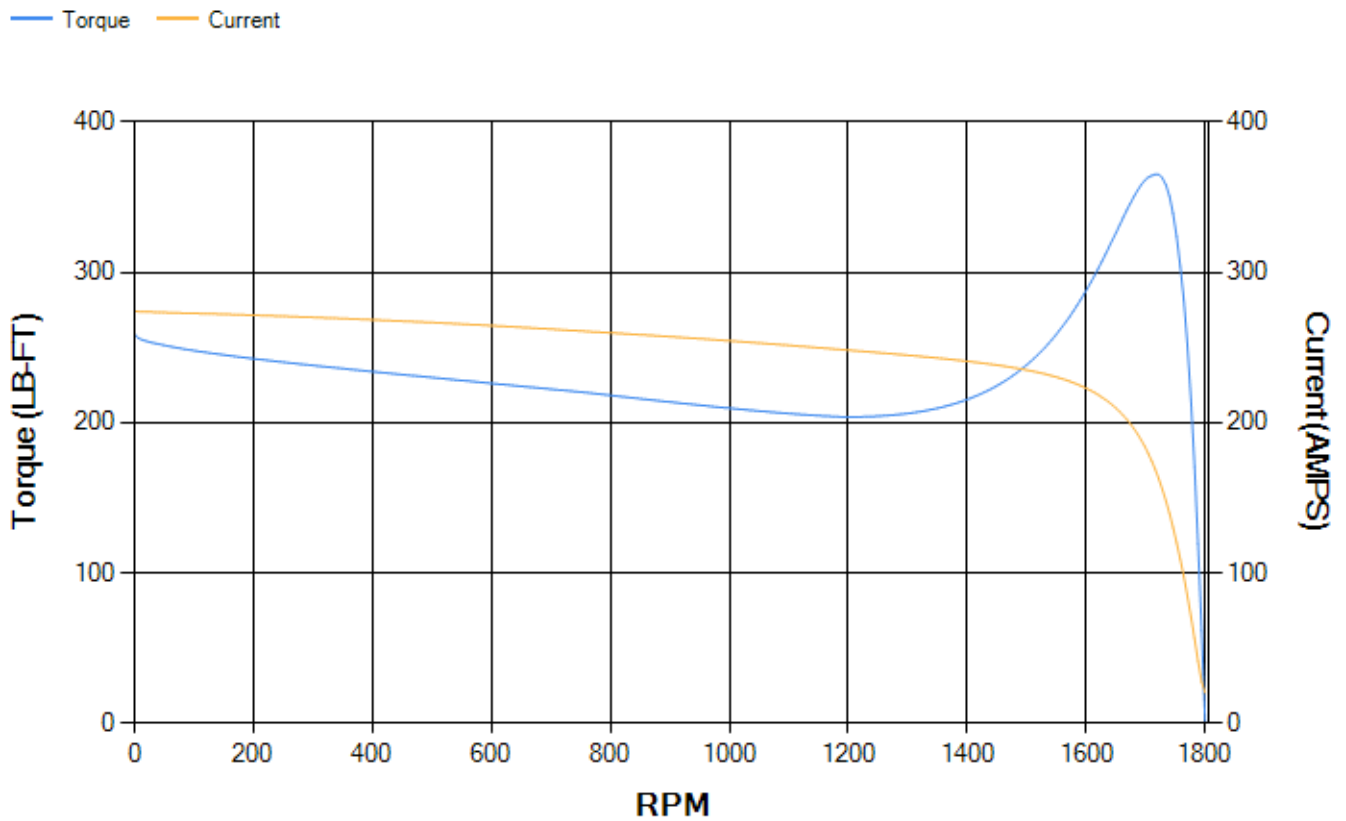
LOAD %	125.0	115.0	100.0	75.0	50.0	25.0	0.0
% EFF	93.84	94.07	94.53	94.45	93.81	90.49	0.00
% PF	82.83	82.32	80.98	76.41	66.26	44.19	4.11
AMPS	60.21	55.6	48.81	38.91	30.11	23.4	20.18

**TORQ(FL)#FT** 147.42      **TORQ(LR)%FL** 175.72      **TORQ(BD)%FL** 246.88  
**AMPS(LR)** 274.09      **PF AT START** 0.33

This motor is capable of two cold or one hot start with a maximum connected load inertia of 1411 Lb-Ft Sq (59.4 Kg-meter Sq)at 100% voltage, where the load torque varies with the square of the speed. Acceleration time with maximum inertia and the above load type is 44 seconds. Safe stall time at 100% voltage is 78 seconds cold, 53 seconds hot. Rotor inertia is 8.52 Lb-Ft Sq (0.36 Kg-meter Sq).

**Open Circuit A-C:** 0.568      **Short Circuit D-C:** 0.025  
**Short Circuit A-C:** 0.035      **X/R Ratio:** 9.426  
**Stator Slots:** 48      **Rotor Slots:** 38

**Speed Torque Current Curve (First Connection, First Speed)**



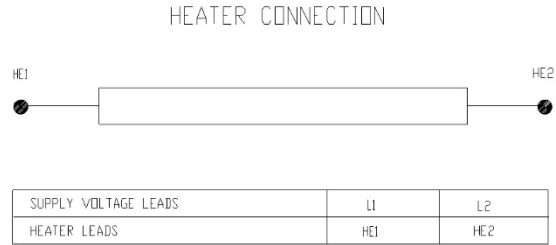


Marks:

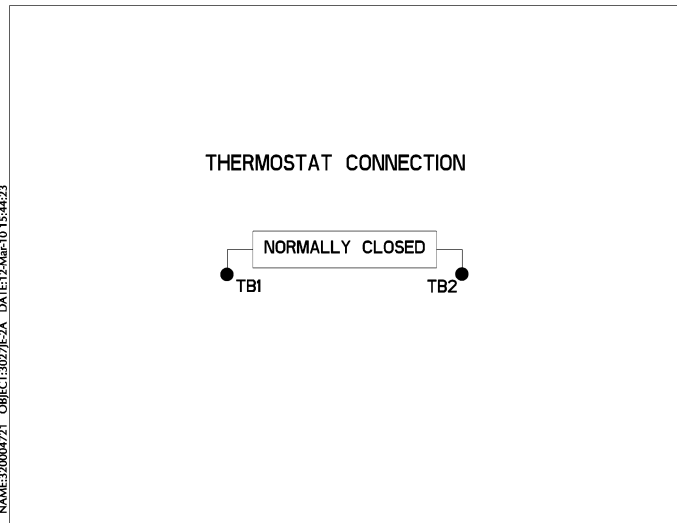
**Connection Diagram**  
**GEM2034E-FIG7**



**Heater Connection**  
**3027JE-1C**



**Thermostat Connection**  
**3027JE-2A**



NAME:320004721 OBJECT:3027JE-2A DATE:12-Mar-10 15:44:23



End shield Assembly		
Part Description	DE Side Part#	ODE Side Part#
End Shield	115E7205AA1	115E7208LJ1
Bearing	235A2509BE01	235A2523AD01
Slinger/Inproseal	235A2300FM1	

Fan & Fan Cover Assembly	
Part Description	Part#
Fan	
Fan Cover	161C1052AA1

Conduit & Accessories Box Assembly	
Part Description	Part#
Conduit Box	149C4429AA2

Mechanical Accessories	
Part Description	Part#
Brake	
Tachometer	

