



GE INDUSTRIAL MOTORS
a **WOLONG** company

Product Technical Information

July 15, 2020

Data shown is for the current revision model #. Ensure your nameplate model # matches.

| | |
|----------------------------|-----------------------|
| Model Number: | 5KS365DAJ6021D |
| Catalog Number: | V4553 |
| Instruction Manual: | GEI-M1045 |
| Connection Diagram: | GEM2034E-FIG7 |
| Outline Drawing: | 148CB36VMHKBCLA0001 |

Accessory Connection Diagrams

| | | | |
|------------------------------|-----------|------------------------------|-----------|
| Bearing Thermocouple: | None | Heater: | 3027JE-1C |
| RTD: | None | Thermistor: | None |
| Thermostat: | 3027JE-2A | Winding Thermocouple: | None |
| Bearing RTD: | None | | |

Table of Contents

| | |
|-----------------------------|----|
| Specification | 01 |
| Performance Characteristics | 02 |
| Outline Drawing | 03 |
| Connection Drawing(s) | 04 |
| Spare parts | 05 |

Marks:

| | | | |
|----------------------------|-----------------------|-------------------------------|--------------|
| MODEL NUMBER: | 5KS365DAJ6021D | Estimated Weight: | 830 Lbs |
| Outline Drawing: | 148CB36VMHKBCLA0001 | Time Rating: | CONT |
| Connection Diagram: | GEM2034E-FIG7 | Enclosure: | WPI |
| Instruction Book: | GEI-M1045 | Encl Construction: | OPEN |
| Design Code: | 36BD1237BA | Ambient Max(°C): | 40 |
| Type: | KS | Alt Ambient Max(°C): | -- |
| Frame: | L365TP16 | Insulation Class: | H |
| Phases: | 3 | NEMA Design: | B |
| Poles: | 4 | Nominal Efficiency: | 95.0 % |
| Output Power: | 75HP 55.5KW | Guaranteed Efficiency: | 94.1 % |
| RPM: | 1785 | 3/4 Load Efficiency: | -- |
| Voltage: | 575 | KVA Code: | G |
| Hertz: | 60 | Max KVAR: | 27.7 |
| Amps - FL: | 73.4 | Power Factor: | 81.0 |
| Service Factor: | 1.15 | Bearing - DE: | 6212C3 |
| Alt Service Factor: | -- | Bearing - ODE: | 235A2523AD01 |

Enclosure is Weather Protected One

Stamped Nameplate Notes:

NEMA ENCLOSURE WP-I, CSA ENCL DP
HTR LDS HE1-HE2 115V 100W
ROT CCW FACING ODE LEAD/PH SEQ 1-2-3/1-2-3
THERMOSTAT LEADS TB1-TB2 TRIP
INVERTER DUTY PER NEMA MG1 PART 31
ALTERNATE RATING FOR PWM CONTROL:1.0SF 40C AMBIENT
VAR TORQUE RANGE 5 -60 HZ
UPPER BRG LUBE OIL: 3.7 QTS
0 DEG C TO 40 DEG C : ISO 32(MINERAL OR SYNTHETIC)
-15 DEG C TO 0 DEG C : ISO 32 SYNTHETIC



Additional Information:

4P, VERT HOLLOW SHAFT HIGH THRUST (1D)
C/BOX 346 CU IN - 3.00" NPT
OIL RESISTANT SLEEVING ON LEADS
(3)N.C, CL F, TRIP TSTAT LDS TO MAIN CONDUIT BOX
115V HTR LDS TO MAIN CONDUIT BOX
GROUND PAD
SHAFT GROUNDING RING MOUNTED ON LOWER END BRG CAP
BEARING LIFE 8760 HRS AT 6244 LB THRUST
CG:15.23 IN FROM P-BASE FACE, STAT DEF:0.0033 IN
RCF:3300 CPM AT C/BOX SIDE, 3270 CPM AT
90 DEG FROM C/ BOX SIDE
NON-REVERSE BALL CARRIER,
BOLTED COUPLING, BX=1.188, EW=.25
SPECIAL BALANCE



Performance Characteristics

1st Winding 1st Connection

Design: 36BD1237BA

Marks:

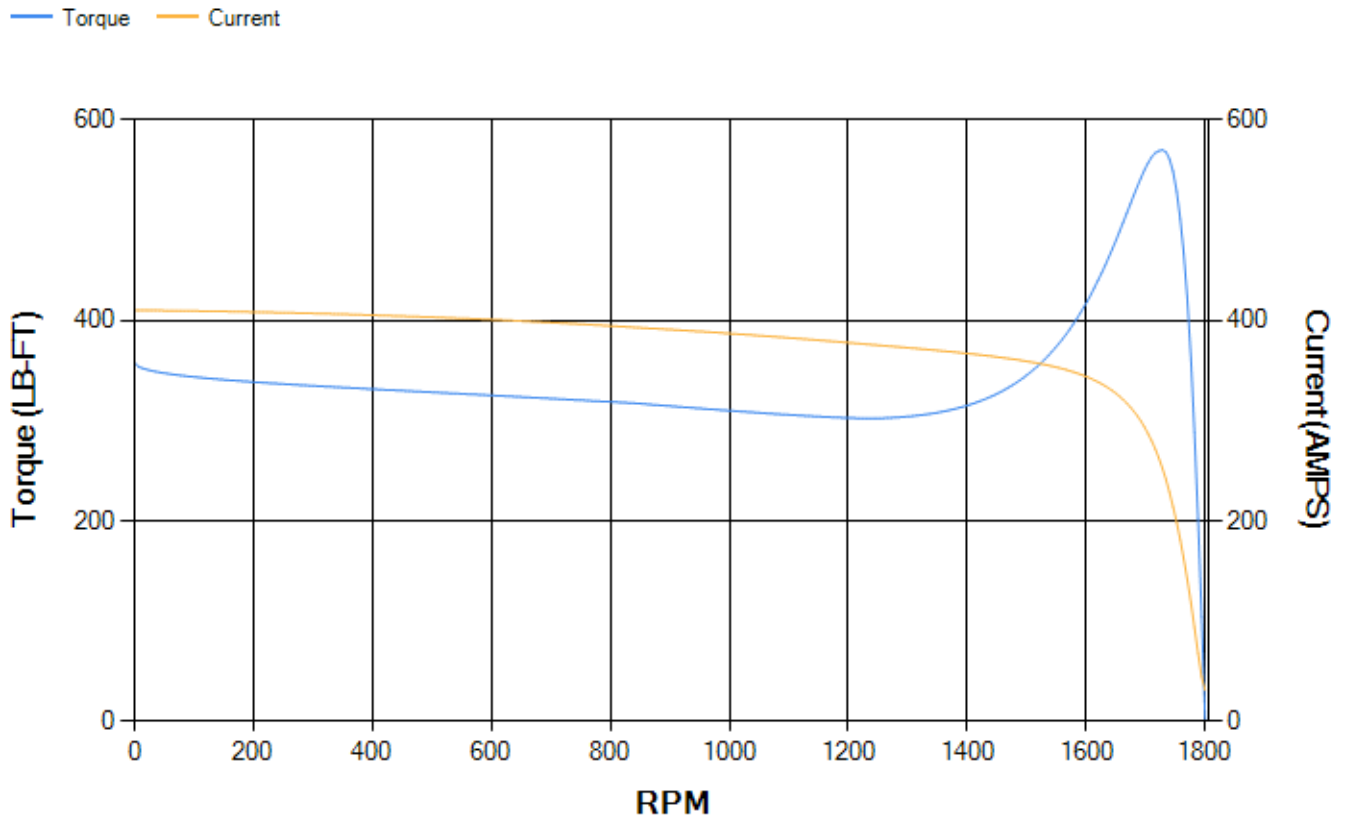
| LOAD % | 125.0 | 115.0 | 100.0 | 75.0 | 50.0 | 25.0 | 0.0 |
|--------|-------|-------|-------|-------|-------|-------|-------|
| % EFF | 94.17 | 94.38 | 94.82 | 94.74 | 94.15 | 91.01 | 0.00 |
| % PF | 83.32 | 82.7 | 81.19 | 76.3 | 65.76 | 43.34 | 3.71 |
| AMPS | 89.46 | 82.74 | 72.77 | 58.26 | 45.35 | 35.59 | 30.98 |

| | | | | | |
|--------------------|--------|--------------------|--------|--------------------|-------|
| TORQ(FL)#FT | 220.86 | TORQ(LR)%FL | 162.05 | TORQ(BD)%FL | 257.5 |
| AMPS(LR) | 410.32 | PF AT START | 0.31 | | |

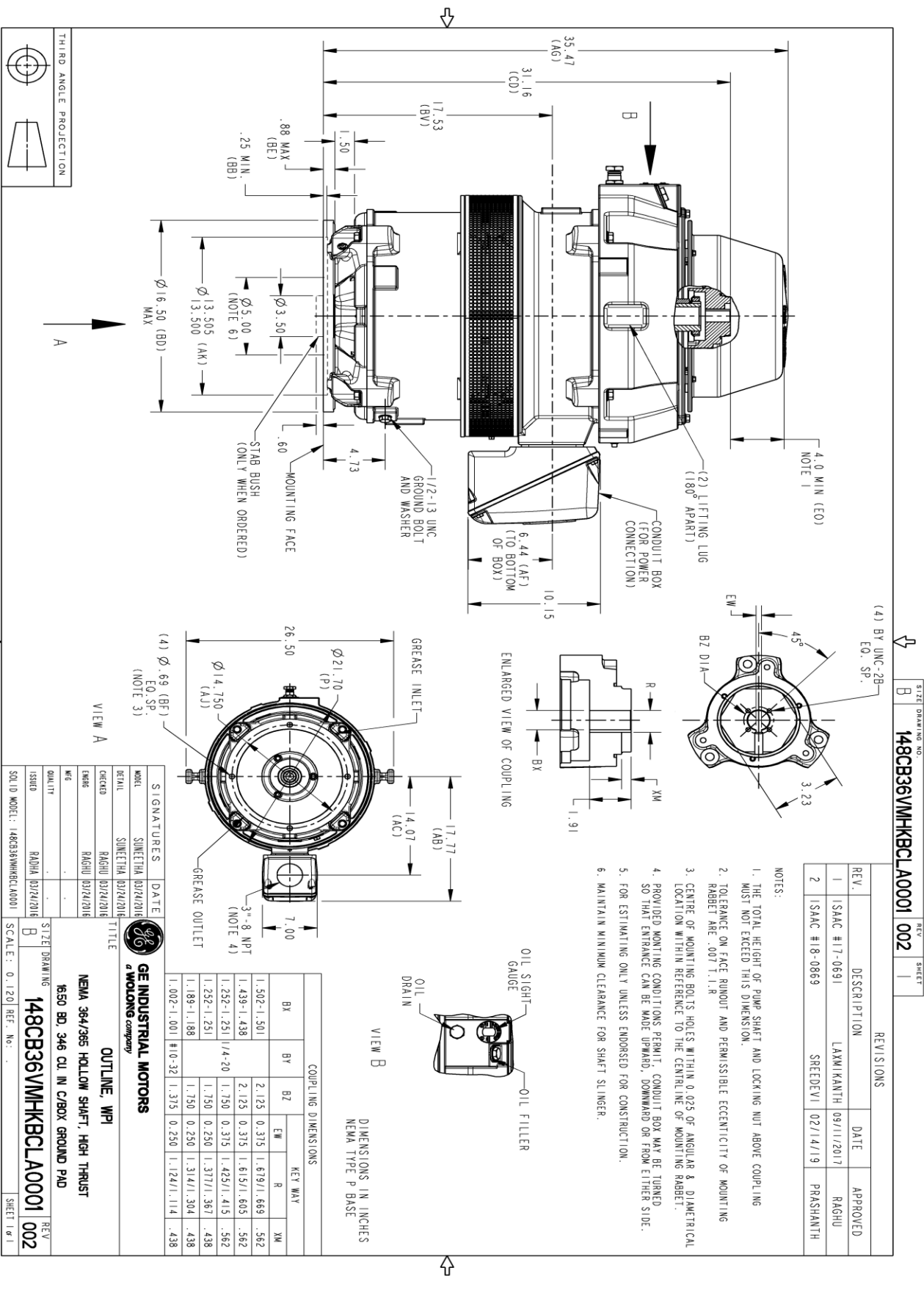
This motor is capable of two cold or one hot start with a maximum connected load inertia of 1595 Lb-Ft Sq (67.15 Kg-meter Sq) at 100% voltage, where the load torque varies with the square of the speed. Acceleration time with maximum inertia and the above load type is 35 seconds. Safe stall time at 100% voltage is 64 seconds cold, 42 seconds hot. Rotor inertia is 12.61 Lb-Ft Sq (0.53 Kg-meter Sq).

| | | | |
|---------------------------|-------|---------------------------|-------|
| Open Circuit A-C: | 0.614 | Short Circuit D-C: | 0.025 |
| Short Circuit A-C: | 0.038 | X/R Ratio: | 9.495 |
| Stator Slots: | 60 | Rotor Slots: | 50 |

Speed Torque Current Curve (First Connection, First Speed)



Marks:



SIZE DRAWING NO. **B** REV. **002**

REVISIONS

| REV. | DESCRIPTION | DATE | APPROVED |
|------|---------------|------------|-----------|
| 1 | ISAC #17-0691 | 09/11/2017 | RAGHU |
| 2 | ISAC #18-0869 | 02/14/19 | PRASHANTH |

SIGNATURES

| MODEL | DATE | TITLE |
|--------|------------|----------|
| DETAIL | 03/24/2016 | SUNEETHA |
| DESIGN | 03/24/2016 | RAGHU |
| CHK | 03/24/2016 | RAGHU |
| ISSUED | 03/24/2016 | RAHNA |

SCALE: 0.120 REF. No. **148CB36VMHKBCLA0001** SHEET 1 OF 1

Marks:

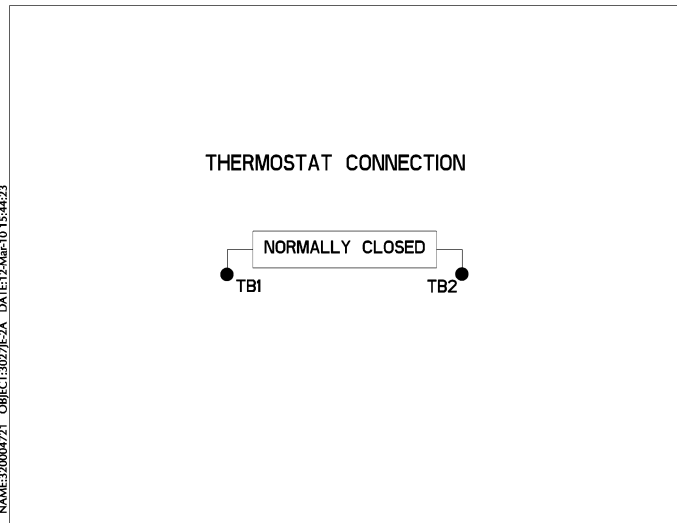
Connection Diagram
GEM2034E-FIG7



Heater Connection
3027JE-1C



Thermostat Connection
3027JE-2A



NAME:320004721 OBJECT:3027JE-2A DATE:12-Mar-10 15:44:23



| End shield Assembly | | |
|---------------------|---------------|----------------|
| Part Description | DE Side Part# | ODE Side Part# |
| End Shield | 115E7255AA1 | 115E7259LJ1 |
| Bearing | 235A2509BE01 | 235A2523AD01 |
| Slinger/Inproseal | 235A2300FM1 | |

| Fan & Fan Cover Assembly | |
|--------------------------|-------------|
| Part Description | Part# |
| Fan | |
| Fan Cover | 161C1053AA1 |

| Conduit & Accessories Box Assembly | |
|------------------------------------|-------------|
| Part Description | Part# |
| Conduit Box | 149C4429AA2 |

| Mechanical Accessories | |
|------------------------|-------|
| Part Description | Part# |
| Brake | |
| Tachometer | |

