



GE INDUSTRIAL MOTORS
a **WOLONG** company

Product Technical Information

July 15, 2020

Data shown is for the current revision model #. Ensure your nameplate model # matches.

Model Number:	5KS444DAJ6023C
Catalog Number:	V4556
Instruction Manual:	GEI-M1045
Connection Diagram:	GEM2034E-FIG7
Outline Drawing:	148CB44VMHKCCLA0001

Accessory Connection Diagrams

Bearing Thermocouple:	None	Heater:	3027JE-1C
RTD:	None	Thermistor:	None
Thermostat:	3027JE-2A	Winding Thermocouple:	None
Bearing RTD:	None		

Table of Contents

Specification	01
Performance Characteristics	02
Outline Drawing	03
Connection Drawing(s)	04
Spare parts	05

Marks:

MODEL NUMBER:	5KS444DAJ6023C	Estimated Weight:	2280 Lbs
Outline Drawing:	148CB44VMHKCCLA0001	Time Rating:	CONT
Connection Diagram:	GEM2034E-FIG7	Enclosure:	WPI
Instruction Book:	GEI-M1045	Encl Construction:	OPEN
Design Code:	44BD1165BA	Ambient Max(°C):	40
Type:	KS	Alt Ambient Max(°C):	--
Frame:	L444TP16	Insulation Class:	H
Phases:	3	NEMA Design:	B
Poles:	4	Nominal Efficiency:	95.8 %
Output Power:	150HP 111KW	Guaranteed Efficiency:	95.0 %
RPM:	1785	3/4 Load Efficiency:	95.2 %
Voltage:	575	KVA Code:	G
Hertz:	60	Max KVAR:	54.4
Amps - FL:	143.0	Power Factor:	82.5
Service Factor:	1.15	Bearing - DE:	6217C3
Alt Service Factor:	--	Bearing - ODE:	235A2536AB01

Enclosure is Weather Protected One

Stamped Nameplate Notes:

NEMA ENCLOSURE WP-I, CSA ENCL DP
HTR LDS HE1-HE2 115V 145W
ROT CCW FACING ODE LEAD/PH SEQ 1-2-3/1-2-3
THERMOSTAT LEADS TB1-TB2 TRIP
INVERTER DUTY PER NEMA MG1 PART 31
ALTERNATE RATING FOR PWM CONTROL:1.0SF 40C AMBIENT
VAR TORQUE RANGE 5 -60 HZ
UPPER BRG LUBE OIL: 10.2 QTS
0 DEG C TO 40 DEG C : ISO 32(MINERAL OR SYNTHETIC)
-15 DEG C TO 0 DEG C : ISO 32 SYNTHETIC



Additional Information:

4P, VERT HOLLOW SHAFT HIGH THRUST (1D)
C/BOX 700 CU IN - 3.00" NPT
SLINGER DE
OIL RESISTANT SLEEVING ON LEADS
(3)N.C.CL.F TRIP TSTAT LDS TO MAIN CONDUIT BOX
115V HTR LDS TO MAIN CONDUIT BOX
GROUND PAD
INSULATED UPPER BEARING CARRIER
SHAFT GROUNDING RING MOUNTED ON DE BRG CAP
BEARING LIFE 8760 HRS AT 14460 LB THRUST
CG:22.60 IN FROM P-BASE FACE,STAT DEF:= 0.005 IN
RCF: 2764 CPM (+/-10%)
NON-REVERSE BALL CARRIER,
BOLTED COUPLING, BX = 1.688, KEY=.375



Performance Characteristics

1st Winding 1st Connection

Design: 44BD1165BA

Marks:

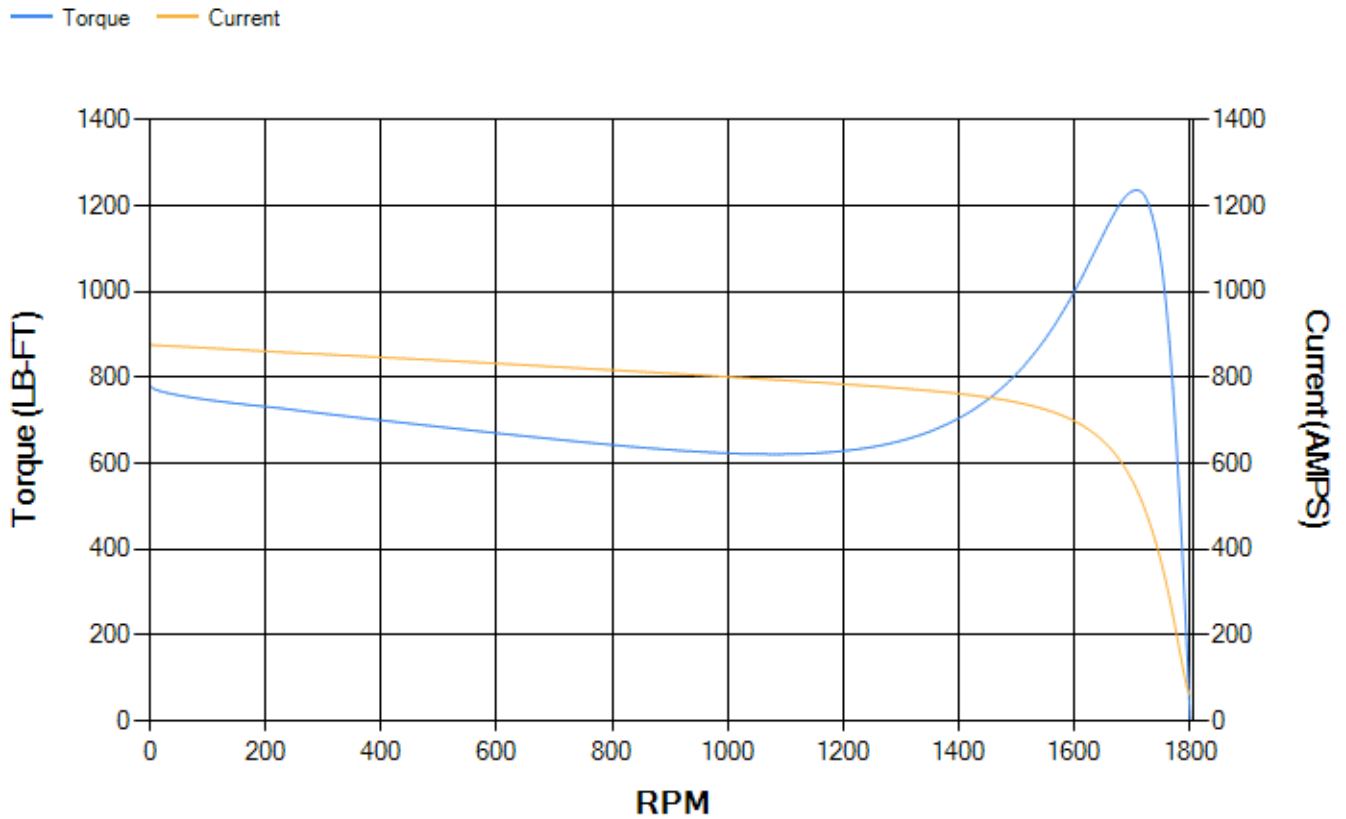
LOAD %	125.0	115.0	100.0	75.0	50.0	25.0	0.0
% EFF	94.89	95.04	95.4	95.2	94.53	91.41	0.00
% PF	84.59	83.91	82.34	77.41	66.83	44.2	3.84
AMPS	174.9	161.95	142.97	114.29	88.88	69.49	60.71

TORQ(FL)#FT	441.32	TORQ(LR)%FL	177.33	TORQ(BD)%FL	279.84
AMPS(LR)	876.34	PF AT START	0.31		

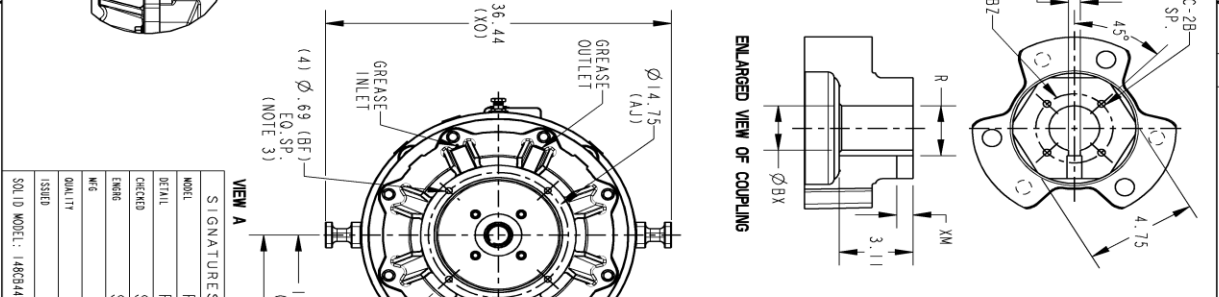
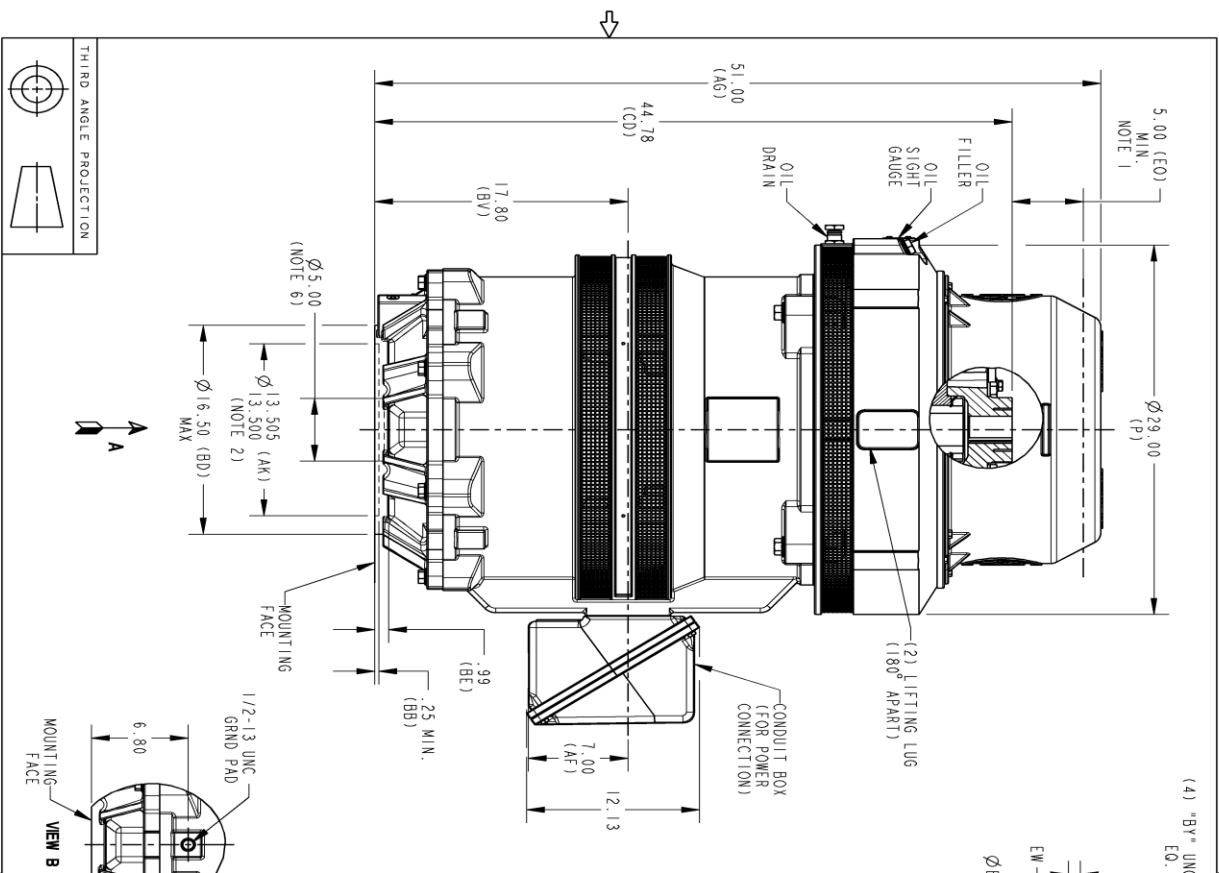
This motor is capable of two cold or one hot start with a maximum connected load inertia of 2467 Lb-Ft Sq (103.86 Kg-meter Sq)at 100% voltage, where the load torque varies with the square of the speed. Acceleration time with maximum inertia and the above load type is 25 seconds. Safe stall time at 100% voltage is 46 seconds cold, 30 seconds hot. Rotor inertia is 44.05 Lb-Ft Sq (1.85 Kg-meter Sq).

Open Circuit A-C:	0.675	Short Circuit D-C:	0.03
Short Circuit A-C:	0.043	X/R Ratio:	11.174
Stator Slots:	72	Rotor Slots:	58

Speed Torque Current Curve (First Connection, First Speed)



Marks:



REV.	DESCRIPTION	DATE	APPROVED
1	ISAC# 16-0728	07/21/16	SASI
2	ISSAC# 18-0869	12/06/18	PRASHANTH
3	ISAC# 19-0101	02/20/20/19	DEEPMANI

COUPLING DIMENSIONS		KEY WAY	
BY	BZ	EW	R
1.501	1/4-20 2.125	.315	1.669 .562
1.688	1/4-20 2.500	.375	1.859 .562
1.751	1/4-20 2.500	.375	1.922 .562
1.813	1/4-20 2.500	.500	2.033 .668
1.938	1/4-20 2.500	.500	2.160 .668
2.001	3/8-16 3.250	.500	2.223 .668
2.063	3/8-16 3.250	.500	2.287 .668
2.126	3/8-16 3.250	.500	2.350 .668
2.188	3/8-16 3.250	.500	2.414 .668
2.251	3/8-16 3.250	.500	2.477 .668
2.316	3/8-16 3.250	.500	2.540 .668
2.438	3/8-16 3.250	.625	2.715 .812
2.501	3/8-16 3.250	.625	2.777 .812

NOTES:
 1. THE TOTAL HEIGHT OF PUMP SHAFT AND LOCKING NUT ABOVE COUPLING MUST NOT EXCEED THIS DIMENSION.
 2. TOLERANCE ON FACE RUNOUT AND PERMISSIBLE ECCENTRICITY OF MOUNTING RABBET ARE .007 T. I. R.
 3. CENTRE OF MOUNTING BOLTS HOLES WITHIN 0.025 OF ANGULAR & DIAMETRICAL LOCATION WITHIN REFERENCE TO THE CENTRALLINE OF MOUNTING RABBET.
 4. PROVIDED MOUNTING CONDITIONS PERMIT, CONDUIT BOX MAY BE TURNED SO THAT ENTRANCE CAN BE MADE UPWARD, DOWNWARD OR FROM EITHER SIDE.
 5. FOR ESTIMATING ONLY UNLESS ENDORSED FOR CONSTRUCTION.
 6. MAINTAIN MINIMUM CLEARANCE FOR SHAFT SLINGER.

GE INDUSTRIAL MOTORS
 a wolong company

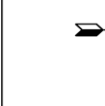
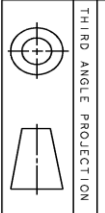
OUTLINE, NEMA WP1 444/445
VERTICAL HOLLOW SHAFT, HIGH THRUST GR5 LOWER
165 BD, 700 CL IN C/BOX GRND PAD

SCALE: 0.120 REF. NO. 148CB44VMHKCCLA0001 003

SHEET 1 OF 1

SIZE DRAWING NO. **148CB44VMHKCCLA0001 003** REV. SHEET

REVISIONS



Marks:

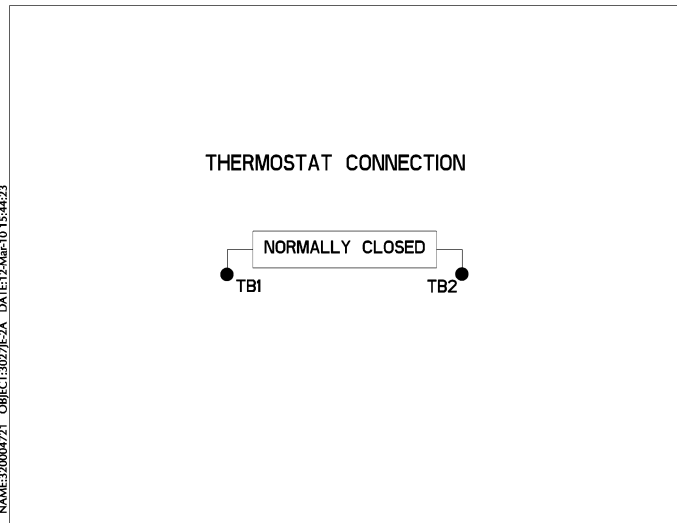
Connection Diagram
GEM2034E-FIG7



Heater Connection
3027JE-1C



Thermostat Connection
3027JE-2A



NAME:320004721 OBJECT:3027JE-2A DATE:12-Mar-10 15:44:23



End shield Assembly		
Part Description	DE Side Part#	ODE Side Part#
End Shield	115E7660AA1	115E7670LM1
Bearing	235A2522AJ01	235A2536AB01
Slinger/Inproseal	149C4399G06	

Fan & Fan Cover Assembly	
Part Description	Part#
Fan	
Fan Cover	161C1050AA1

Conduit & Accessories Box Assembly	
Part Description	Part#
Conduit Box	118D4408AD2

Mechanical Accessories	
Part Description	Part#
Brake	
Tachometer	

