



GE INDUSTRIAL MOTORS
a **WOLONG** company

Product Technical Information

July 17, 2020

Data shown is for the current revision model #. Ensure your nameplate model # matches.

Model Number:	5KS364DAJ7005B
Catalog Number:	V4605
Instruction Manual:	GEI-M1045
Connection Diagram:	GEM2034E-FIG3
Outline Drawing:	148CB36VMHKBCAA0001

Accessory Connection Diagrams

Bearing Thermocouple:	None	Heater:	3027JE-1C
RTD:	None	Thermistor:	None
Thermostat:	None	Winding Thermocouple:	None
Bearing RTD:	None		

Table of Contents

Specification	01
Performance Characteristics	02
Outline Drawing	03
Connection Drawing(s)	04
Spare parts	05

Marks:

MODEL NUMBER:	5KS364DAJ7005B	Estimated Weight:	800 Lbs
Outline Drawing:	148CB36VMHKBCAA0001	Time Rating:	CONT
Connection Diagram:	GEM2034E-FIG3	Enclosure:	WPI
Instruction Book:	GEI-M1045	Encl Construction:	OPEN
Design Code:	36BD3101AA	Ambient Max(°C):	40
Type:	KS	Alt Ambient Max(°C):	--
Frame:	L364TP16	Insulation Class:	H
Phases:	3	NEMA Design:	B
Poles:	6	Nominal Efficiency:	94.1 %
Output Power:	40HP 29.6KW	Guaranteed Efficiency:	93.0 %
RPM:	1185	3/4 Load Efficiency:	--
Voltage:	230/460	KVA Code:	G
Hertz:	60	Max KVAR:	15.7
Amps - FL:	98.8/49.4	Power Factor:	81.0
Service Factor:	1.15	Bearing - DE:	6212C3
Alt Service Factor:	--	Bearing - ODE:	235A2523AD01

Enclosure is Weather Protected One

Stamped Nameplate Notes:

NEMA ENCLOSURE WP-I, CSA ENCL DP
HTR LDS HE1-HE2 115V 100W
ROT CCW FACING ODE LEAD/PH SEQ 1-2-3/1-2-3
INVERTER DUTY PER NEMA MG1 PART 31
ALTERNATE RATING FOR PWM CONTROL:1.0SF 40C AMBIENT
VAR TORQUE RANGE 7.5-60 HZ
UPPER BRG LUBE OIL: 3.7 QTS
0 DEG C TO 40 DEG C : ISO 32(MINERAL OR SYNTHETIC)
-15 DEG C TO 0 DEG C : ISO 32 SYNTHETIC
SUITABLE FOR 30 HP, 190/380V 50HZ WITH
115.4/57.7 AMPS AND 985 RPM AT 1.0 SF



Additional Information:

6P, VERT HOLLOW SHAFT HIGH THRUST (1D)
SPECIAL BALANCE
C/BOX 346 CU IN - 3.00" NPT
OIL RESISTANT SLEEVING ON LEADS
115V HTR LDS TO MAIN CONDUIT BOX
BEARING LIFE 8760 HRS AT 6700 LB THRUST
CG:15.23 IN FROM P-BASE FACE, STAT DEF:0.0035 IN
RCF:3180 CPM AT C/BOX SIDE, 3180 CPM AT
90 DEG FROM C/ BOX SIDE
NON-REVERSE BALL CARRIER,
BOLTED COUPLING, BX = 1.251, KEY EW=0.375"



Performance Characteristics

1st Winding 1st Connection

Design: 36BD3101AA

Marks:

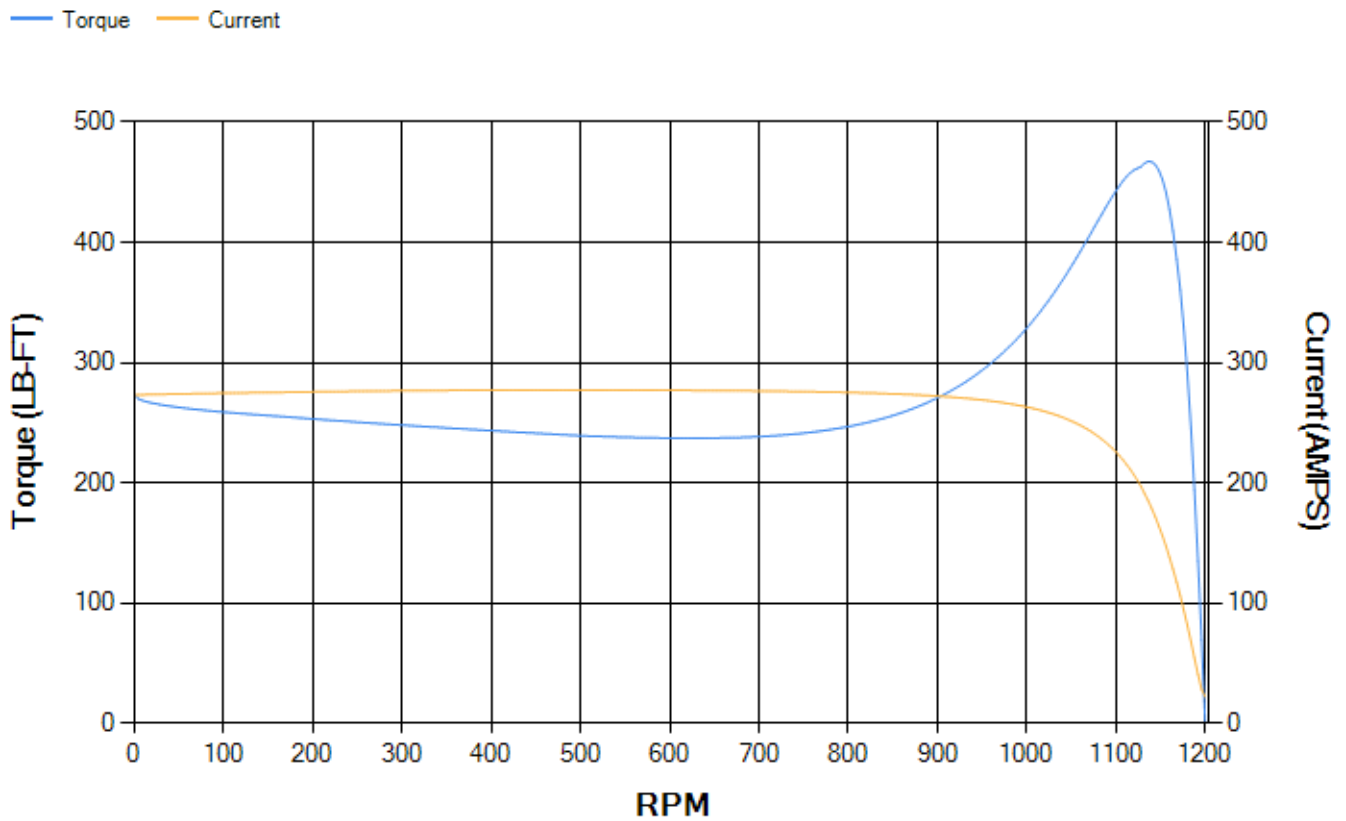
LOAD %	125.0	115.0	100.0	75.0	50.0	25.0	0.0
% EFF	93.04	93.33	93.88	93.95	93.46	90.26	0.00
% PF	83.37	82.56	80.76	75.29	64.11	41.6	3.79
AMPS	60.33	55.87	49.27	39.69	31.24	24.93	21.95

TORQ(FL)#FT	176.88	TORQ(LR)%FL	154.3	TORQ(BD)%FL	260.73
AMPS(LR)	273.12	PF AT START	0.38		

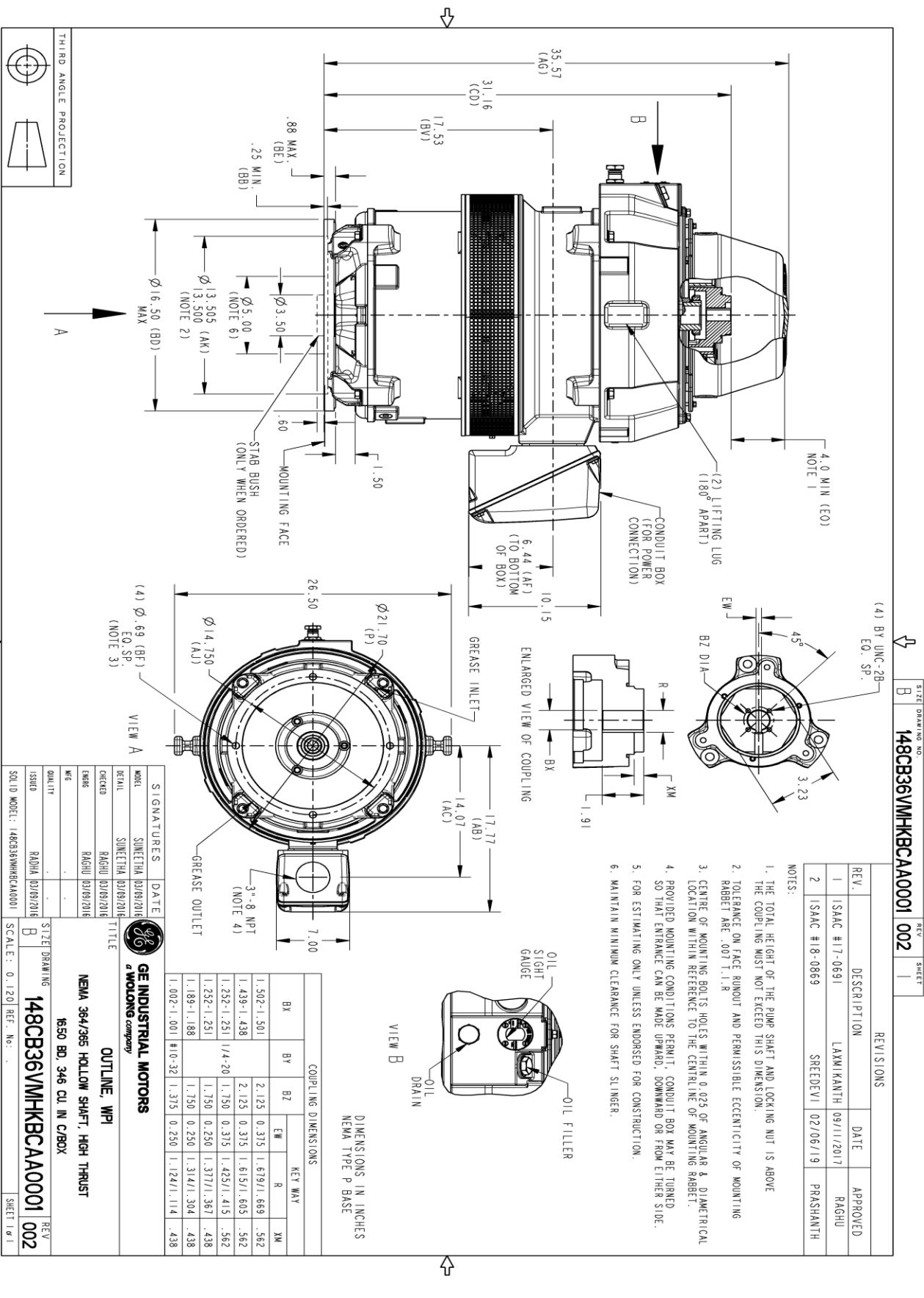
This motor is capable of two cold or one hot start with a maximum connected load inertia of 3058 Lb-Ft Sq (128.74 Kg-meter Sq)at 100% voltage, where the load torque varies with the square of the speed. Acceleration time with maximum inertia and the above load type is 55 seconds. Safe stall time at 100% voltage is 104 seconds cold, 83 seconds hot. Rotor inertia is 16.34 Lb-Ft Sq (0.69 Kg-meter Sq).

Open Circuit A-C:	0.525	Short Circuit D-C:	0.016
Short Circuit A-C:	0.032	X/R Ratio:	5.941
Stator Slots:	72	Rotor Slots:	58

Speed Torque Current Curve (First Connection, First Speed)



Marks:

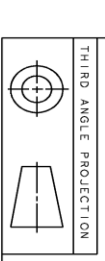


REVISIONS

REV.	DESCRIPTION	DATE	APPROVED
1	ISAC #17-0691	09/11/2017	RAHJU
2	ISAC #18-0869	02/06/19	PRASHANTH

NOTES:

1. THE TOTAL HEIGHT OF THE PUMP SHAFT AND LOCKING NUT IS ABOVE THE COUPLING MUST NOT EXCEED THIS DIMENSION.
2. TOLERANCE ON FACE RUNOUT AND PERMISSIBLE ECCENTRICITY OF MOUNTING RABBIT ARE .001 T.I.R
3. CENTRE OF MOUNTING BOLTS HOLES WITHIN 0.025 OF ANGULAR & DIAMETRICAL RABBIT ARE .001 T.I.R
4. PROVIDED MOUNTING CONDITIONS PERMIT, CONDUIT BOX MAY BE TURNED SO THAT ENTRANCE CAN BE MADE UPWARD, DOWNWARD OR FROM EITHER SIDE.
5. FOR ESTIMATING ONLY UNLESS ENDORSED FOR CONSTRUCTION.
6. MAINTAIN MINIMUM CLEARANCE FOR SHAFT SLINGER.



SIGNATURES

MODEL	DATE	TITLE
DETAIL	03/09/2016	SINETHA
DESIGN	03/09/2016	RAHJU
CHK	03/09/2016	RAHJU
ISSUED	03/09/2016	RAHJU
SOLID MODEL	148CB36VMHKBCAA0001	

GE INDUSTRIAL MOTORS
a WOLONG company

OUTLINE, WPI

NEMA 364/365 HOLLOW SHAFT, HIGH THRUST

650 BD, 346 CL IN C/BOX

SCALE: 0.120 REF. No. 148CB36VMHKBCAA0001

SIZE DRAWING NO. B 148CB36VMHKBCAA0001 002

REV. SHEET 1

Marks:

Connection Diagram
GEM2034E-FIG3



Heater Connection
3027JE-1C



End shield Assembly		
Part Description	DE Side Part#	ODE Side Part#
End Shield	115E7255AA1	115E7259LJ1
Bearing	235A2509BE01	235A2523AD01
Slinger/Inproseal	235A2300FM1	

Fan & Fan Cover Assembly	
Part Description	Part#
Fan	
Fan Cover	161C1053AA1

Conduit & Accessories Box Assembly	
Part Description	Part#
Conduit Box	149C4429AA2

Mechanical Accessories	
Part Description	Part#
Brake	
Tachometer	

