



GE INDUSTRIAL MOTORS
a **WOLONG** company

Product Technical Information

July 17, 2020

Data shown is for the current revision model #. Ensure your nameplate model # matches.

Model Number:	5KS365DAJ7005B
Catalog Number:	V4606
Instruction Manual:	GEI-M1045
Connection Diagram:	GEM2034E-FIG3
Outline Drawing:	148CB36VMHKBCAA0001

Accessory Connection Diagrams

Bearing Thermocouple:	None	Heater:	3027JE-1C
RTD:	None	Thermistor:	None
Thermostat:	None	Winding Thermocouple:	None
Bearing RTD:	None		

Table of Contents

Specification	01
Performance Characteristics	02
Outline Drawing	03
Connection Drawing(s)	04
Spare parts	05

Marks:

MODEL NUMBER:	5KS365DAJ7005B	Estimated Weight:	820 Lbs
Outline Drawing:	148CB36VMHKBCAA0001	Time Rating:	CONT
Connection Diagram:	GEM2034E-FIG3	Enclosure:	WPI
Instruction Book:	GEI-M1045	Encl Construction:	OPEN
Design Code:	36BD3100A	Ambient Max(°C):	40
Type:	KS	Alt Ambient Max(°C):	--
Frame:	L365TP16	Insulation Class:	H
Phases:	3	NEMA Design:	B
Poles:	6	Nominal Efficiency:	94.1 %
Output Power:	50HP 37KW	Guaranteed Efficiency:	93.000 %
RPM:	1185	3/4 Load Efficiency:	--
Voltage:	230/460	KVA Code:	G
Hertz:	60	Max KVAR:	20.1
Amps - FL:	124.2/62.1	Power Factor:	80.5
Service Factor:	1.15	Bearing - DE:	6212C3
Alt Service Factor:	--	Bearing - ODE:	235A2523AD01

Enclosure is Weather Protected One

Stamped Nameplate Notes:

NEMA ENCLOSURE WP-I, CSA ENCL DP
HTR LDS HE1-HE2 115V 100W
ROT CCW FACING ODE LEAD/PH SEQ 1-2-3/1-2-3
INVERTER DUTY PER NEMA MG1 PART 31
ALTERNATE RATING FOR PWM CONTROL:1.0SF 40C AMBIENT
VAR TORQUE RANGE 7.5-60 HZ
UPPER BRG LUBE OIL: 3.7 QTS
0 DEG C TO 40 DEG C : ISO 32(MINERAL OR SYNTHETIC)
-15 DEG C TO 0 DEG C : ISO 32 SYNTHETIC
SUITABLE FOR 40 HP, 190/380V 50HZ WITH
144.2/72.1 AMPS AND 980 RPM AT 1.0 SF



Additional Information:

6P, VERT HOLLOW SHAFT HIGH THRUST (1D)
SPECIAL BALANCE
C/BOX 346 CU IN - 3.00" NPT
OIL RESISTANT SLEEVING ON LEADS
115V HTR LDS TO MAIN CONDUIT BOX
BEARING LIFE 8760 HRS AT 6700 LB THRUST
CG:15.23 IN FROM P-BASE FACE, STAT DEF:0.0035 IN
RCF:3180 CPM AT C/BOX SIDE, 3180 CPM AT
90 DEG FROM C/ BOX SIDE
NON-REVERSE BALL CARRIER,
BOLTED COUPLING, BX = 1.251, KEY EW=0.375"



Performance Characteristics

1st Winding 1st Connection

Design: 36BD3100A

Marks:

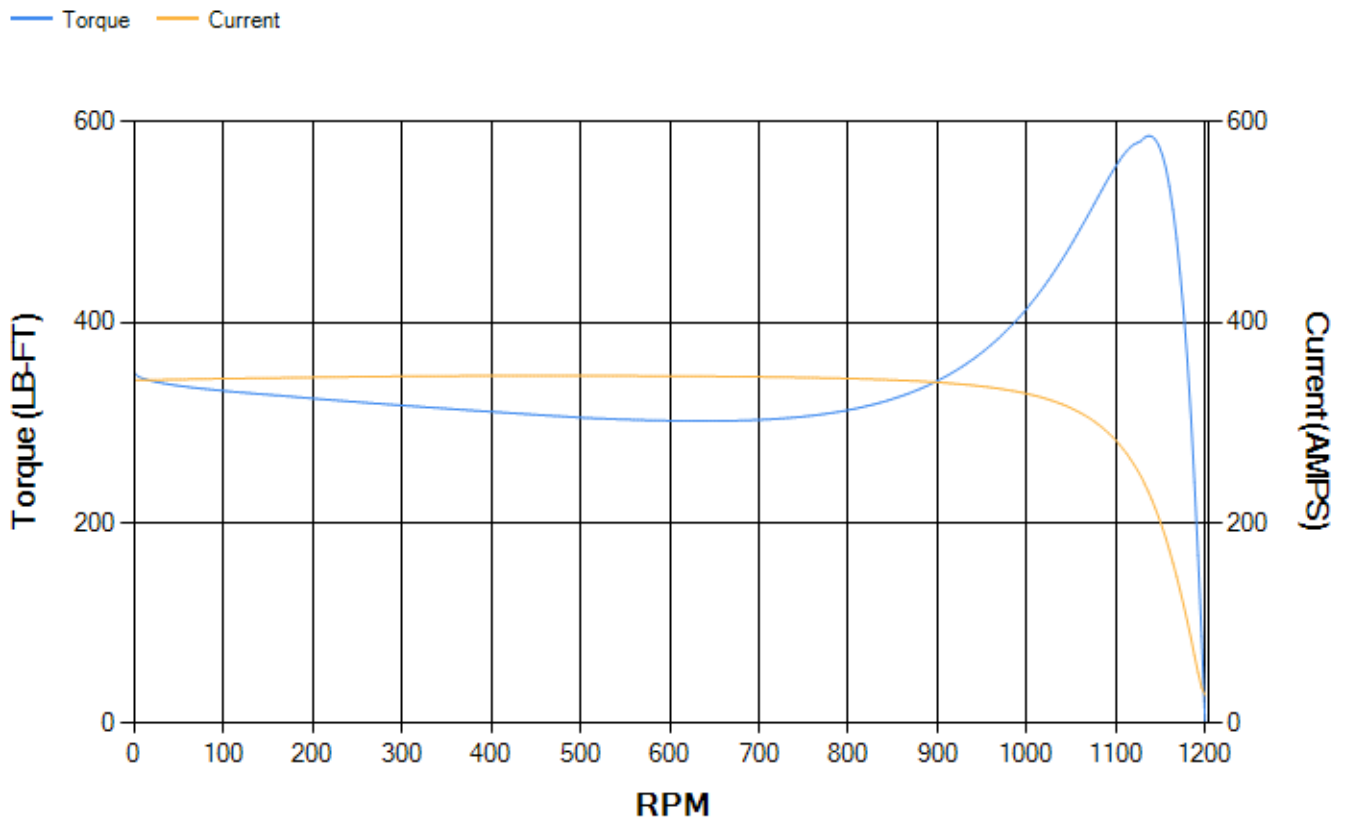
LOAD %	125.0	115.0	100.0	75.0	50.0	25.0	0.0
% EFF	93.04	93.34	93.92	94.05	93.65	90.65	0.00
% PF	83.03	82.2	80.34	74.75	63.4	40.83	3.5
AMPS	75.72	70.14	61.87	49.92	39.41	31.61	27.99

TORQ(FL)#FT	221.2	TORQ(LR)%FL	158.16	TORQ(BD)%FL	261.7
AMPS(LR)	342.32	PF AT START	0.38		

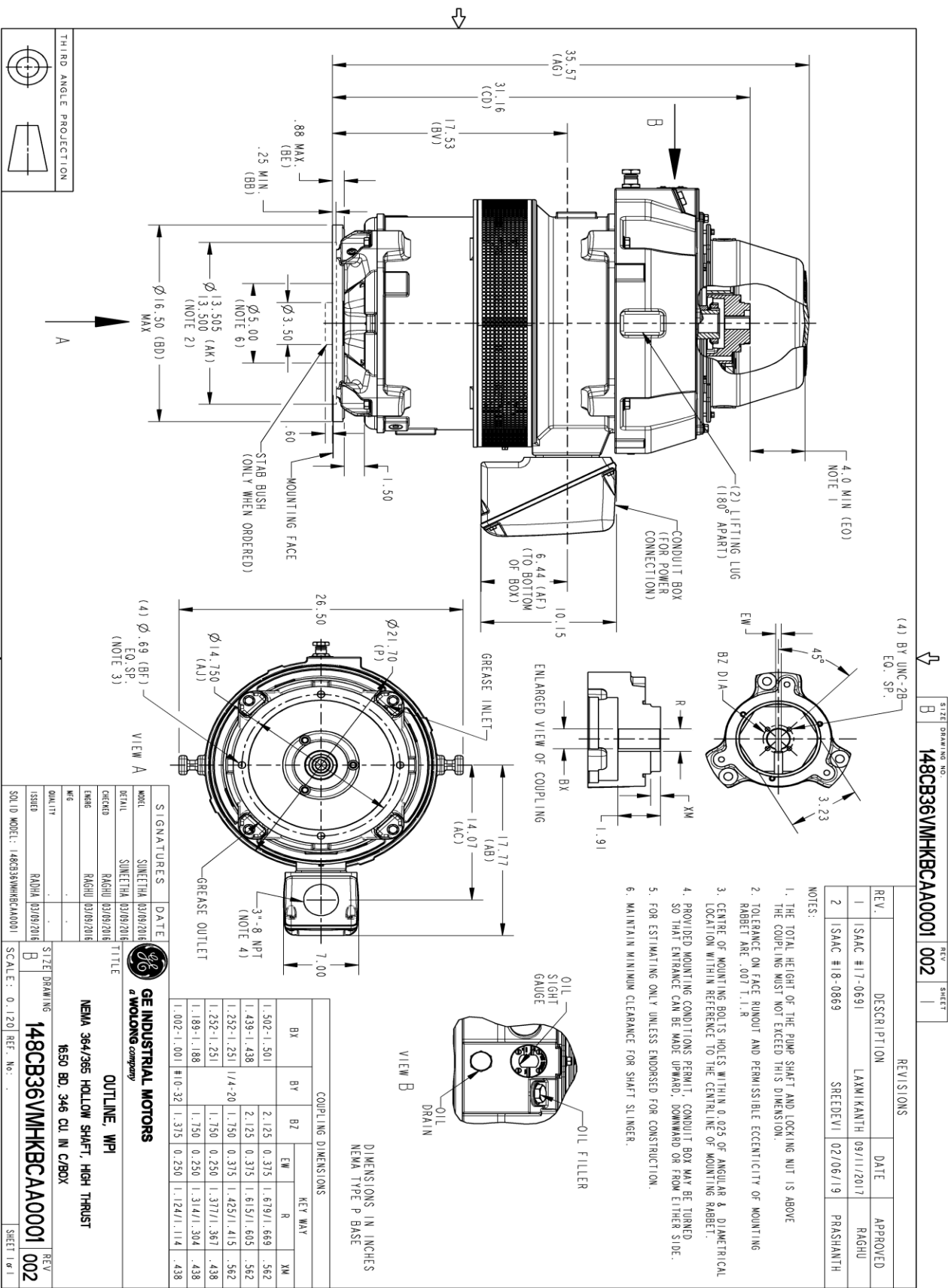
This motor is capable of two cold or one hot start with a maximum connected load inertia of 3241 Lb-Ft Sq (136.45 Kg-meter Sq)at 100% voltage, where the load torque varies with the square of the speed. Acceleration time with maximum inertia and the above load type is 46 seconds. Safe stall time at 100% voltage is 89 seconds cold, 65 seconds hot. Rotor inertia is 17.83 Lb-Ft Sq (0.75 Kg-meter Sq).

Open Circuit A-C:	0.493	Short Circuit D-C:	0.016
Short Circuit A-C:	0.03	X/R Ratio:	5.889
Stator Slots:	72	Rotor Slots:	58

Speed Torque Current Curve (First Connection, First Speed)



Marks:



Marks:

Connection Diagram
GEM2034E-FIG3



Heater Connection
3027JE-1C



End shield Assembly		
Part Description	DE Side Part#	ODE Side Part#
End Shield	115E7255AA1	115E7259LJ1
Bearing	235A2509BE01	235A2523AD01
Slinger/Inproseal	235A2300FM1	

Fan & Fan Cover Assembly	
Part Description	Part#
Fan	
Fan Cover	161C1053AA1

Conduit & Accessories Box Assembly	
Part Description	Part#
Conduit Box	149C4429AA2

Mechanical Accessories	
Part Description	Part#
Brake	
Tachometer	

